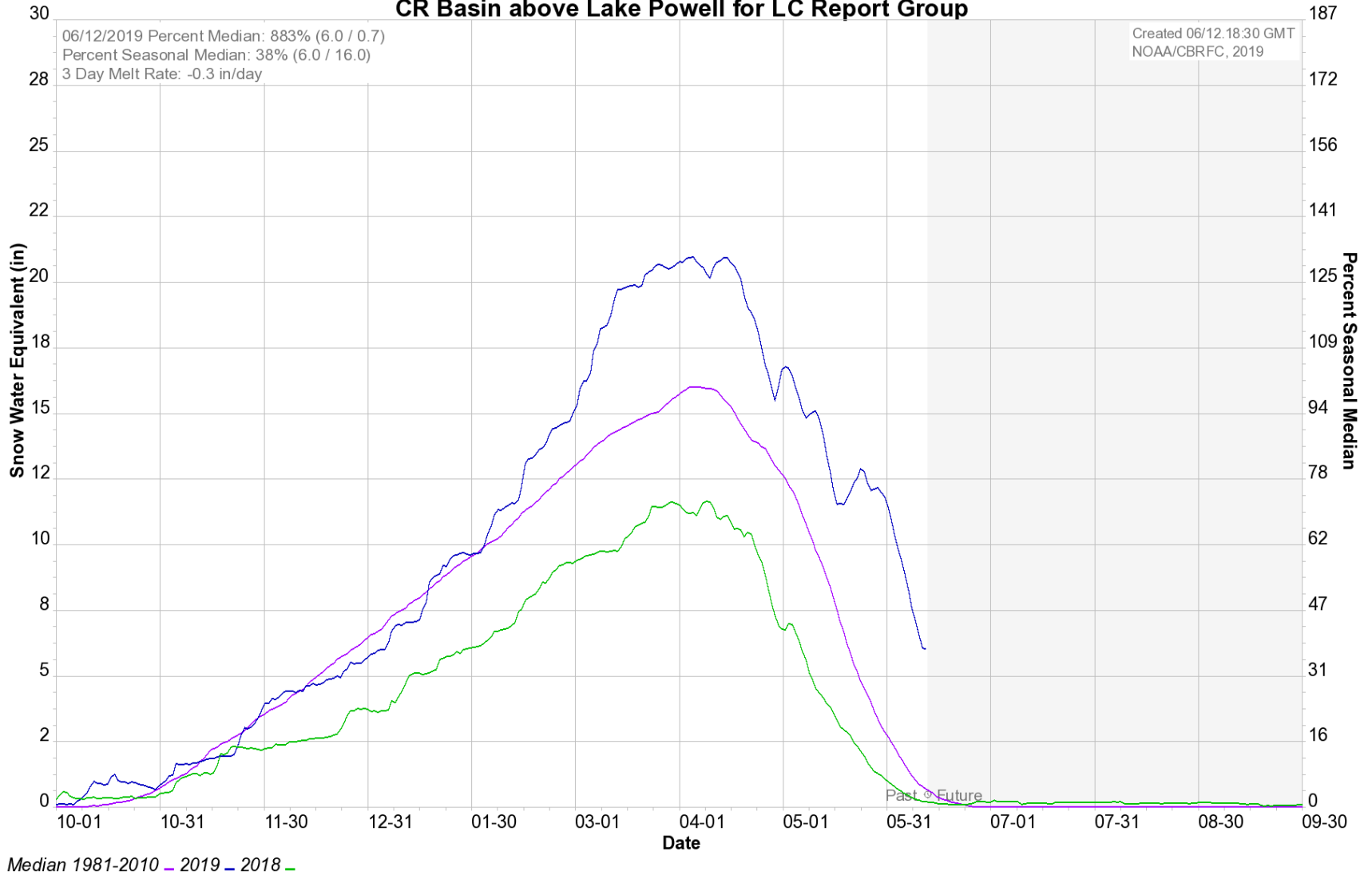


Operations Report

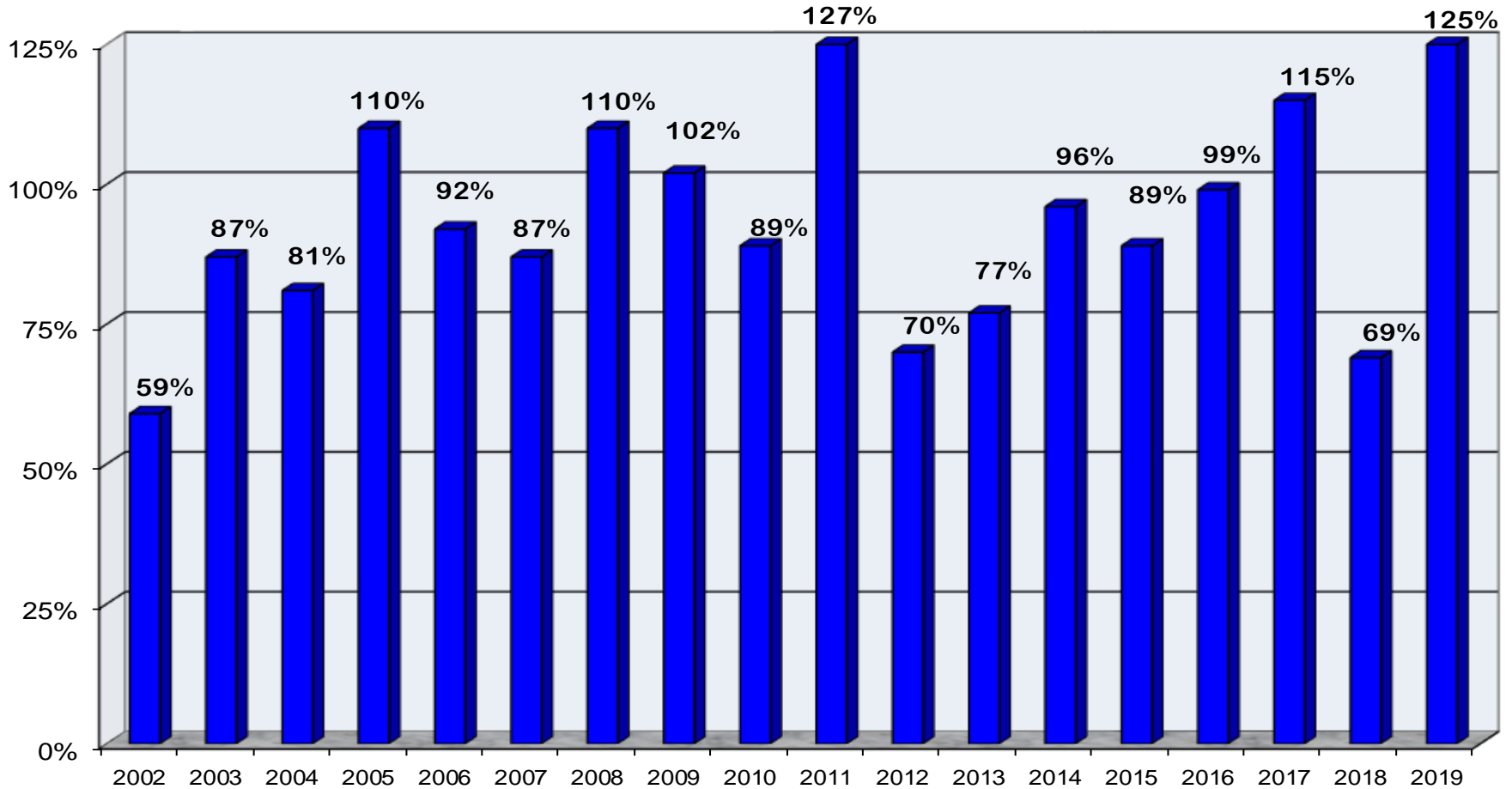
June 18, 2019

Colorado Basin River Forecast Center CR Basin above Lake Powell for LC Report Group

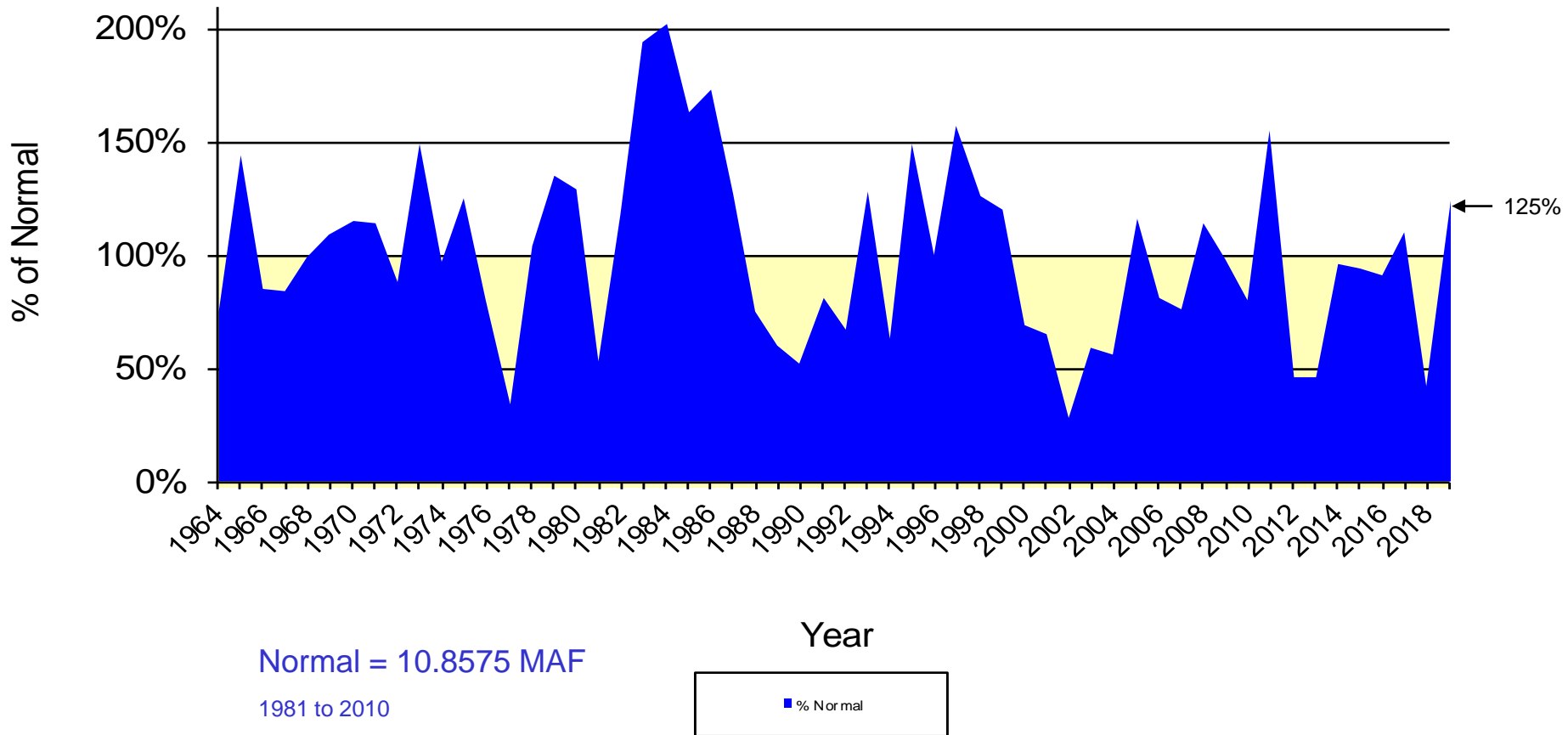


Upper Colorado River System

Water Year Precipitation to Date
(Average based on 1981 - 2010)

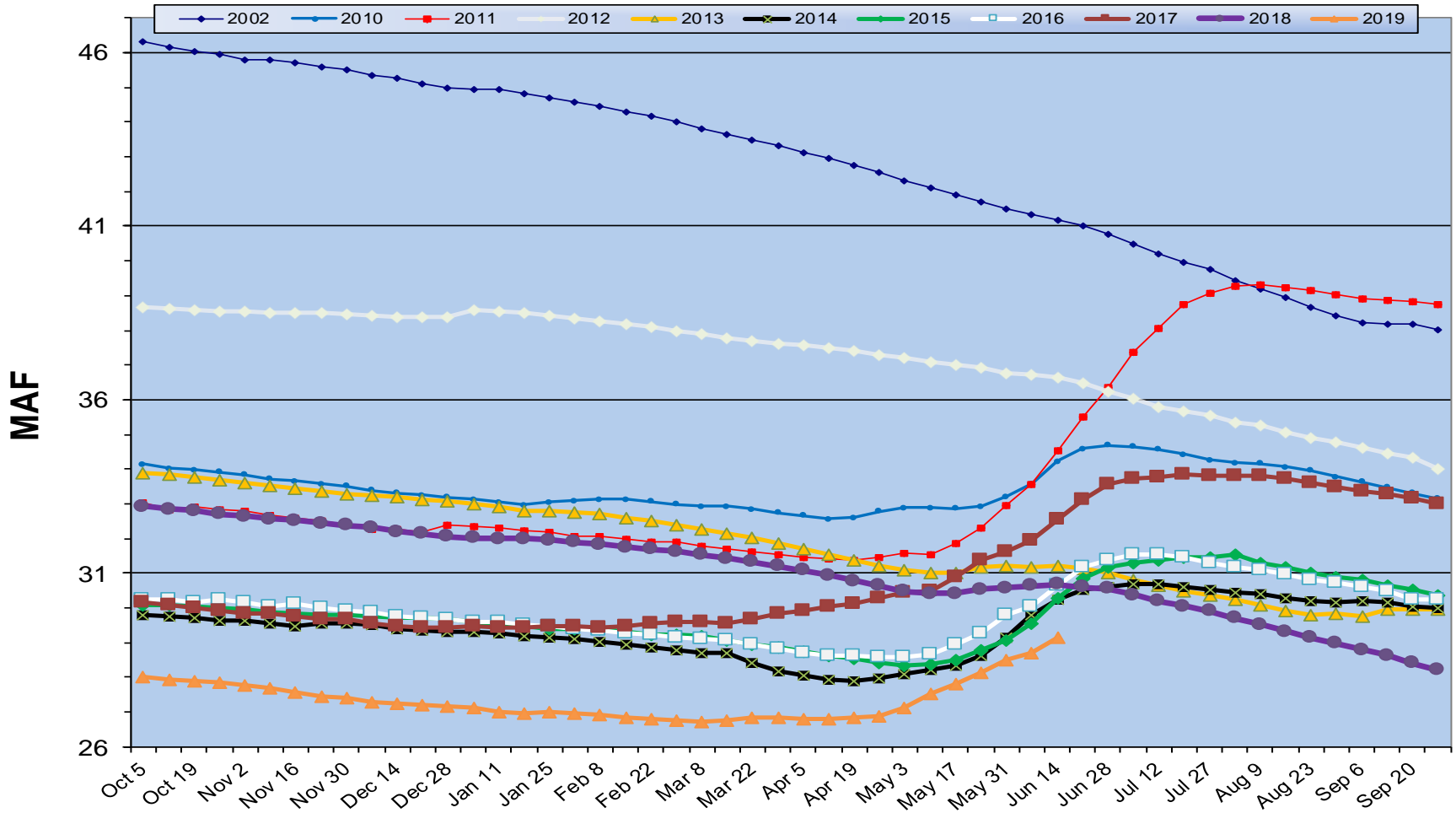


Lake Powell Annual Unregulated Inflow



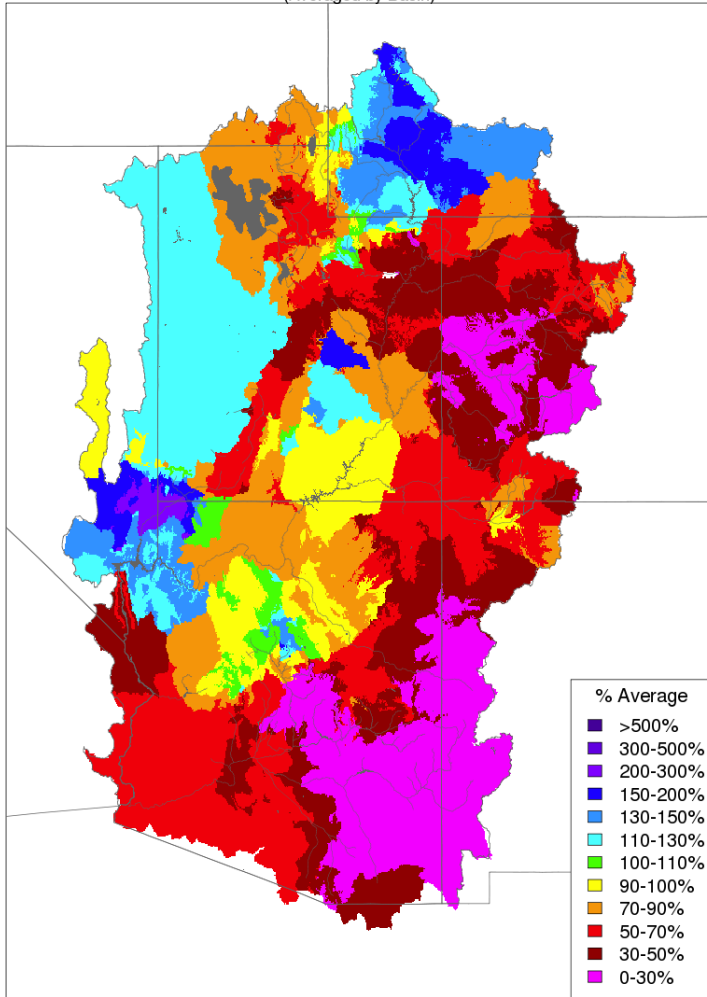
Total System Contents

Includes Upper & Lower Colorado River Reservoirs*



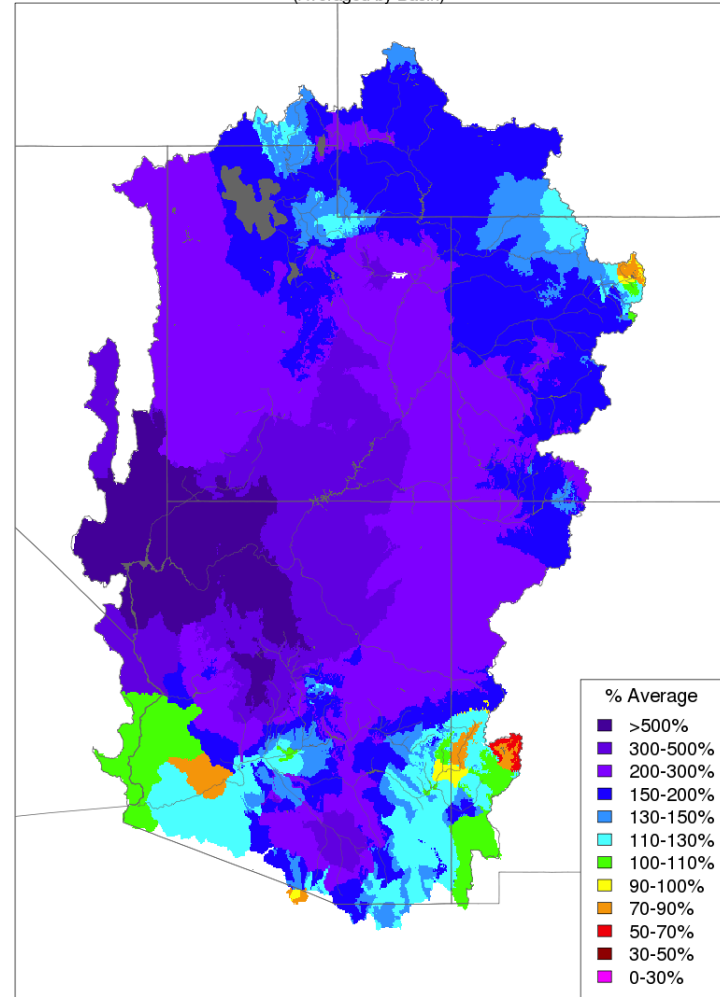
Monthly Precipitation

Monthly Precipitation - May 2018
(Averaged by Basin)



Prepared by NOAA, Colorado Basin River Forecast Center
Salt Lake City, Utah, www.cbrfc.noaa.gov

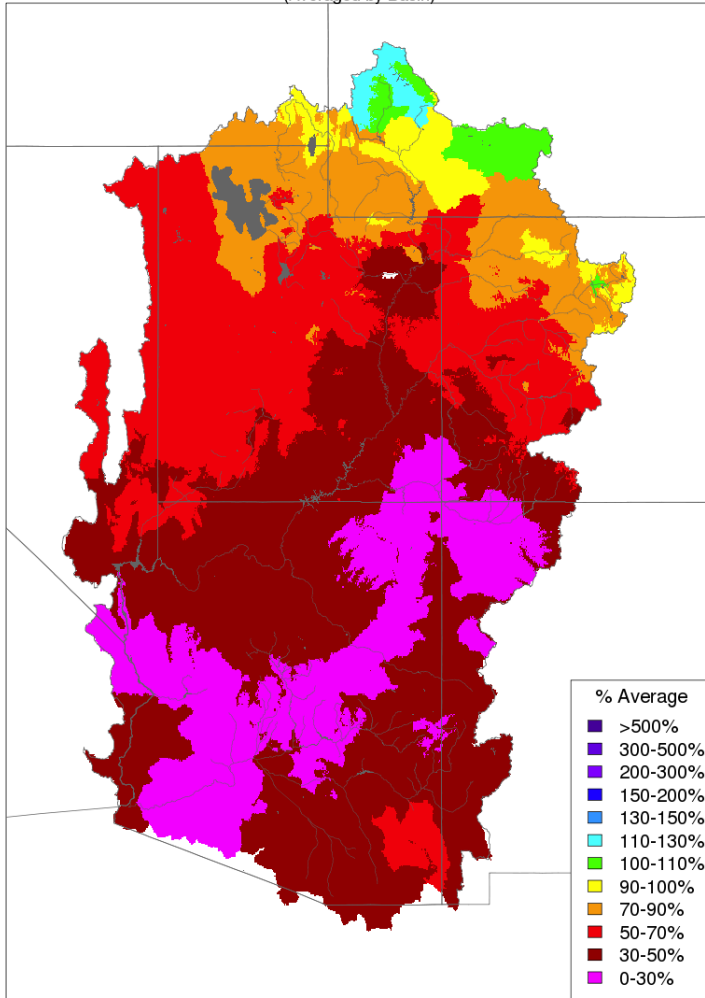
Monthly Precipitation - May 2019
(Averaged by Basin)



Prepared by NOAA, Colorado Basin River Forecast Center
Salt Lake City, Utah, www.cbrfc.noaa.gov

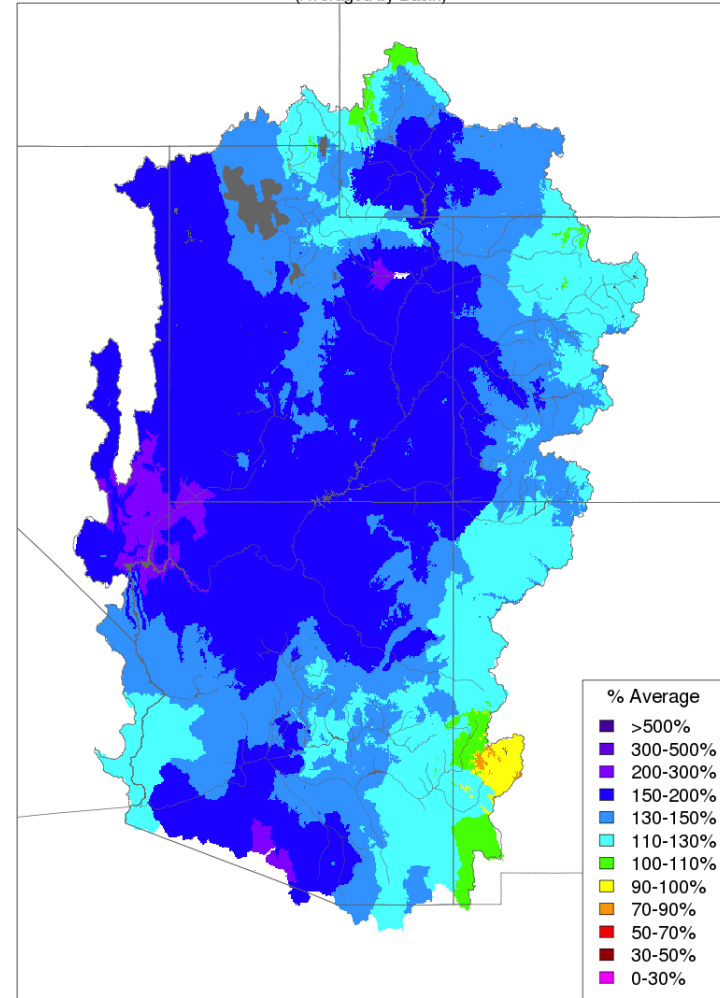
Seasonal Precipitation

Water Year Precipitation, October 2017 - May 2018
(Averaged by Basin)



Prepared by NOAA, Colorado Basin River Forecast Center
Salt Lake City, Utah, www.cbrfc.noaa.gov

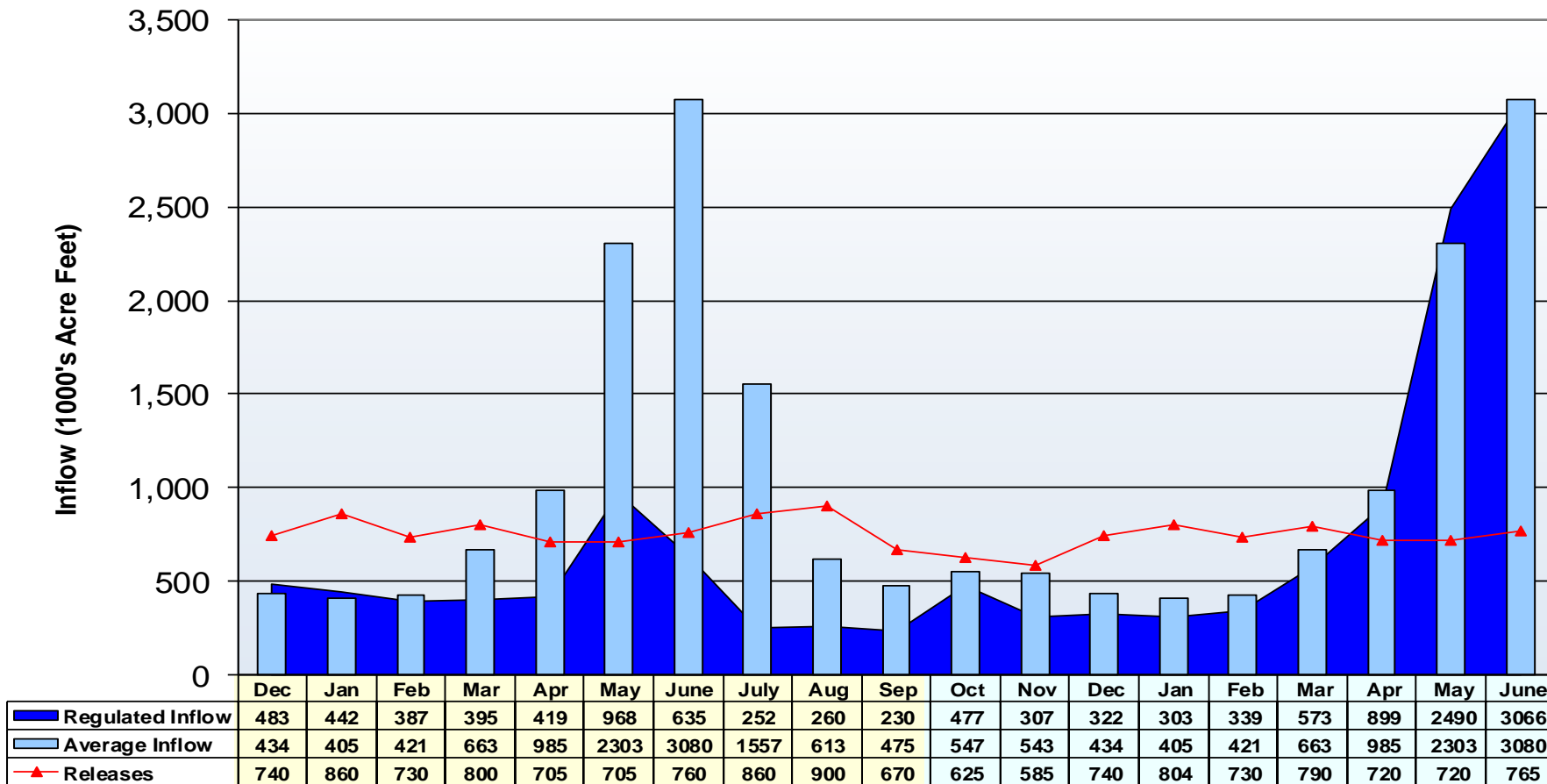
Water Year Precipitation, October 2018 - May 2019
(Averaged by Basin)



Prepared by NOAA, Colorado Basin River Forecast Center
Salt Lake City, Utah, www.cbrfc.noaa.gov

Lake Powell Actual vs. Average Inflow

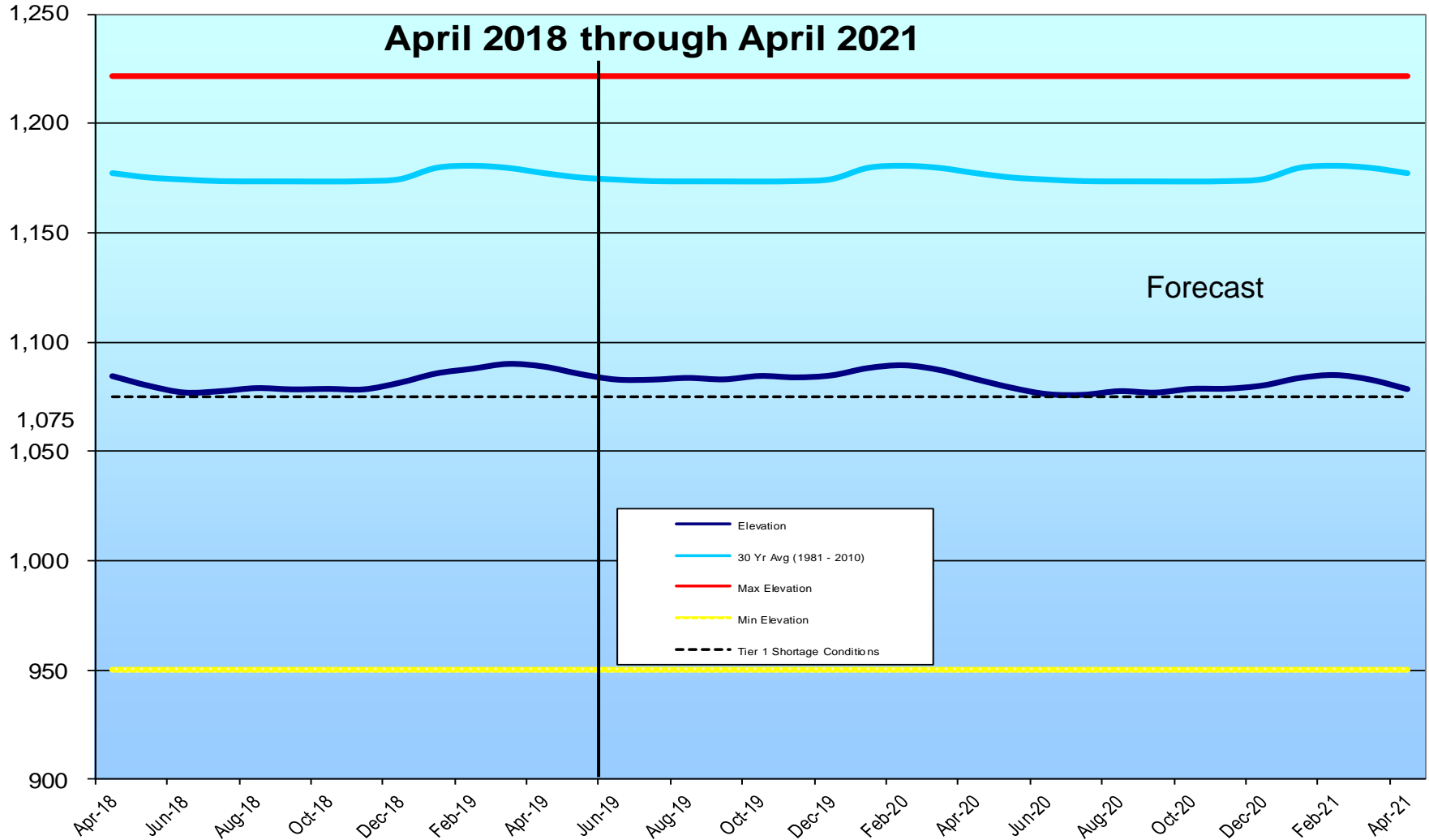
Water Years 2018 to 2019



WY 2018

WY 2019

Lake Mead Elevation



June 18, 2019

Questions or Comments?
Call Linda Sullivan at:
602-368-4265

For a copy of this report, go to the Power Authority website
at: <http://www.powerauthority.org/>
and click on downloads.