

Arizona Power Authority

Operations Report

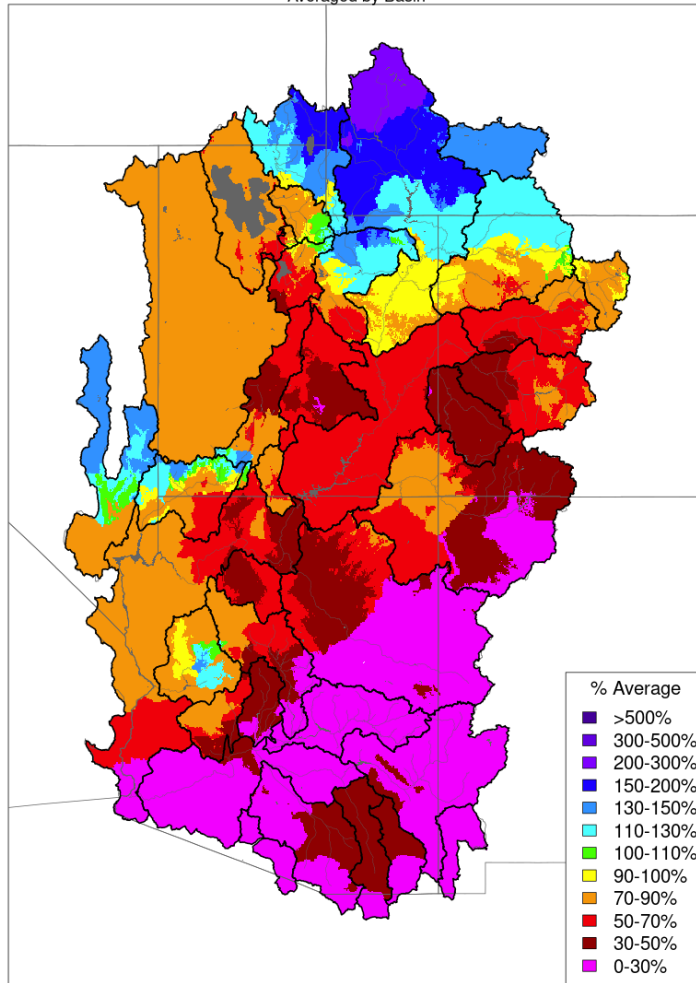
JANUARY 20, 2026

Arizona Power Authority

MONTHLY PRECIPITATION

Monthly Precipitation - December 2025

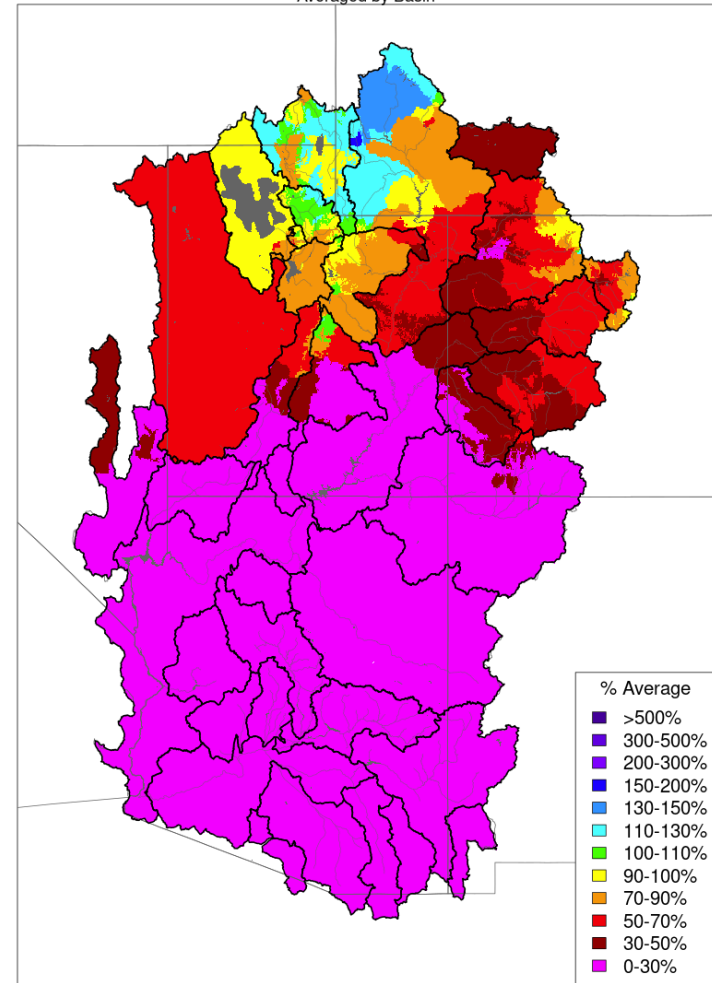
Averaged by Basin



Prepared by NOAA, Colorado Basin River Forecast Center
Salt Lake City, Utah, www.cbrfc.noaa.gov

Monthly Precipitation - December 2024

Averaged by Basin



Prepared by NOAA, Colorado Basin River Forecast Center
Salt Lake City, Utah, www.cbrfc.noaa.gov

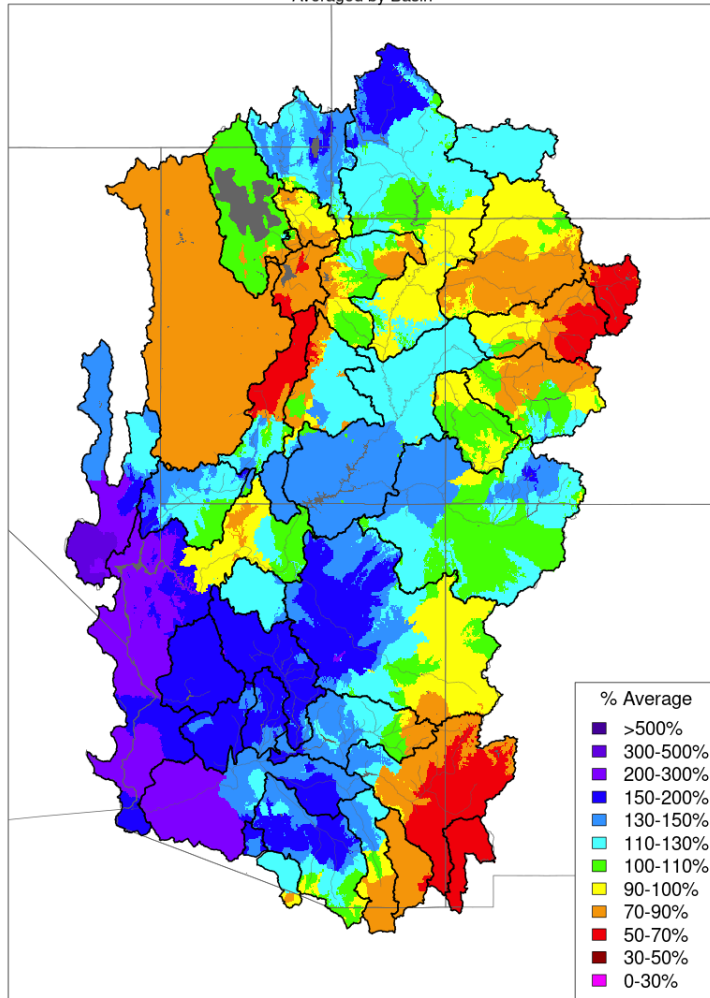
January 20, 2026

Arizona Power Authority

WATER YEAR PRECIPITATION

Water Year Precipitation, October 2025 - December 2025

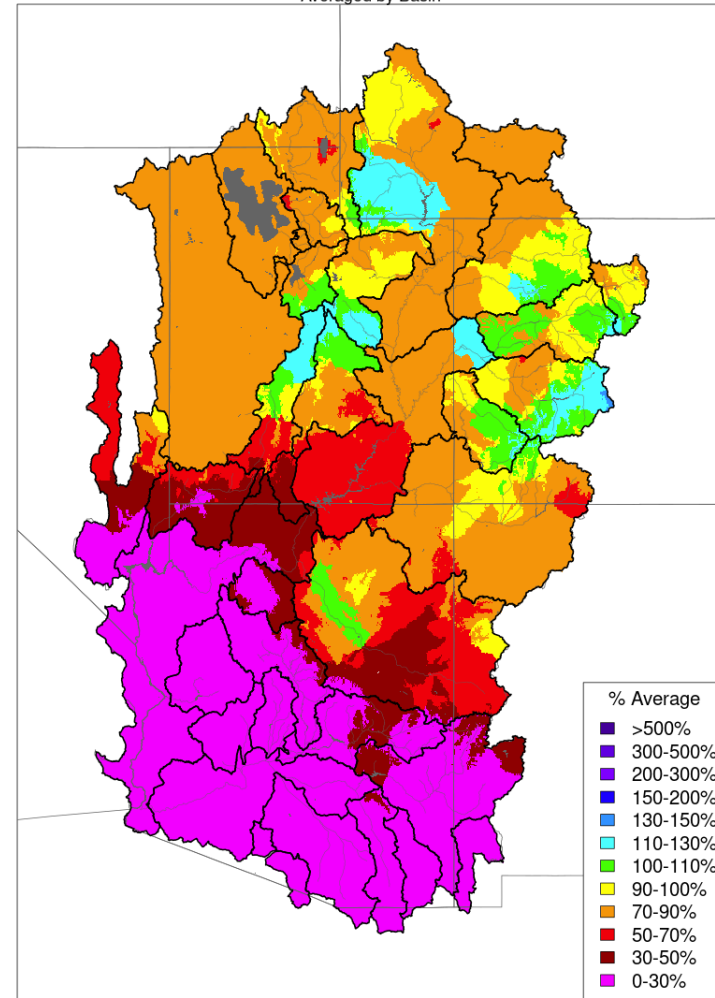
Averaged by Basin



Prepared by NOAA, Colorado Basin River Forecast Center
Salt Lake City, Utah, www.cbrfc.noaa.gov

Water Year Precipitation, October 2024 - December 2024

Averaged by Basin

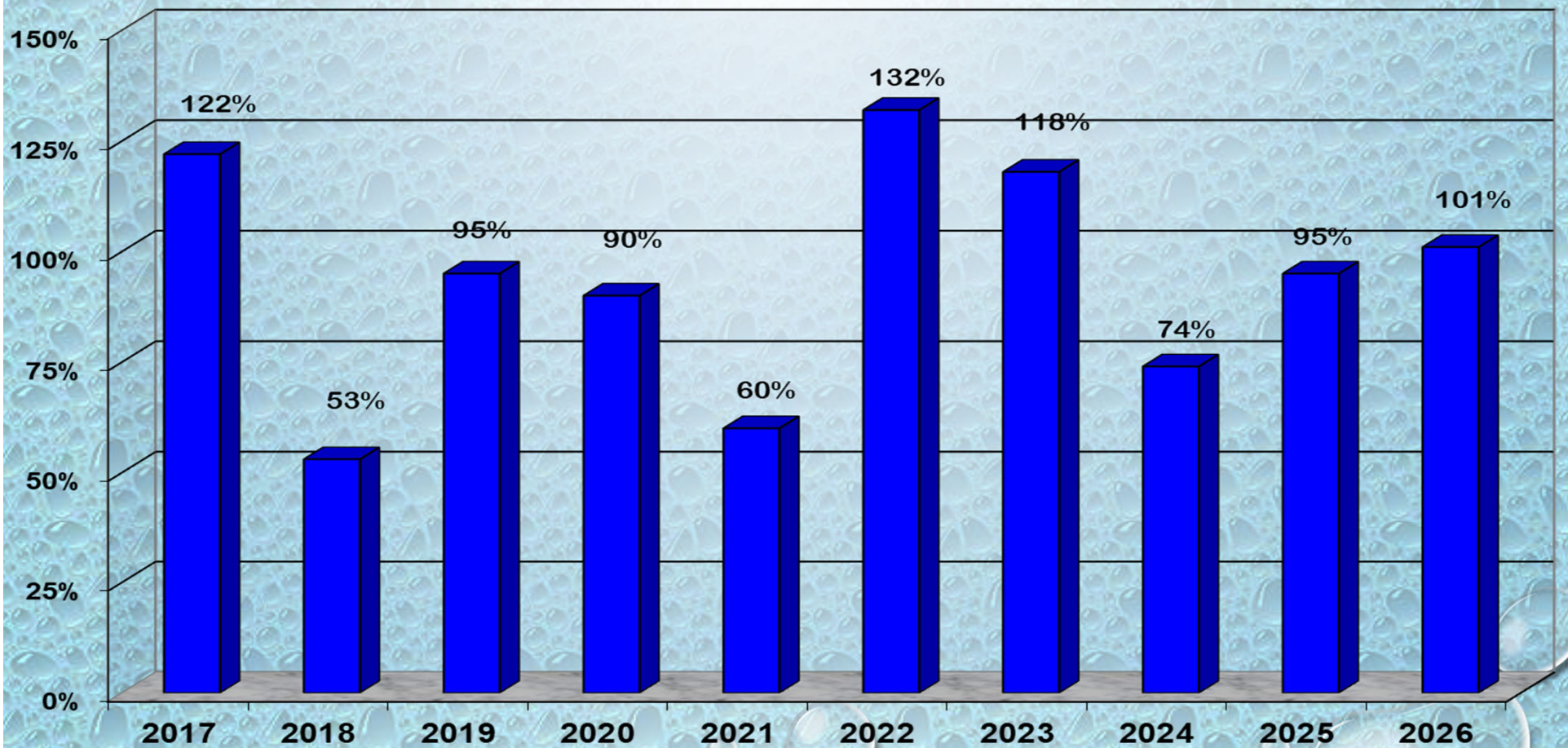


Prepared by NOAA, Colorado Basin River Forecast Center
Salt Lake City, Utah, www.cbrfc.noaa.gov

January 20, 2026

Arizona Power Authority UPPER COLORADO RIVER SYSTEM

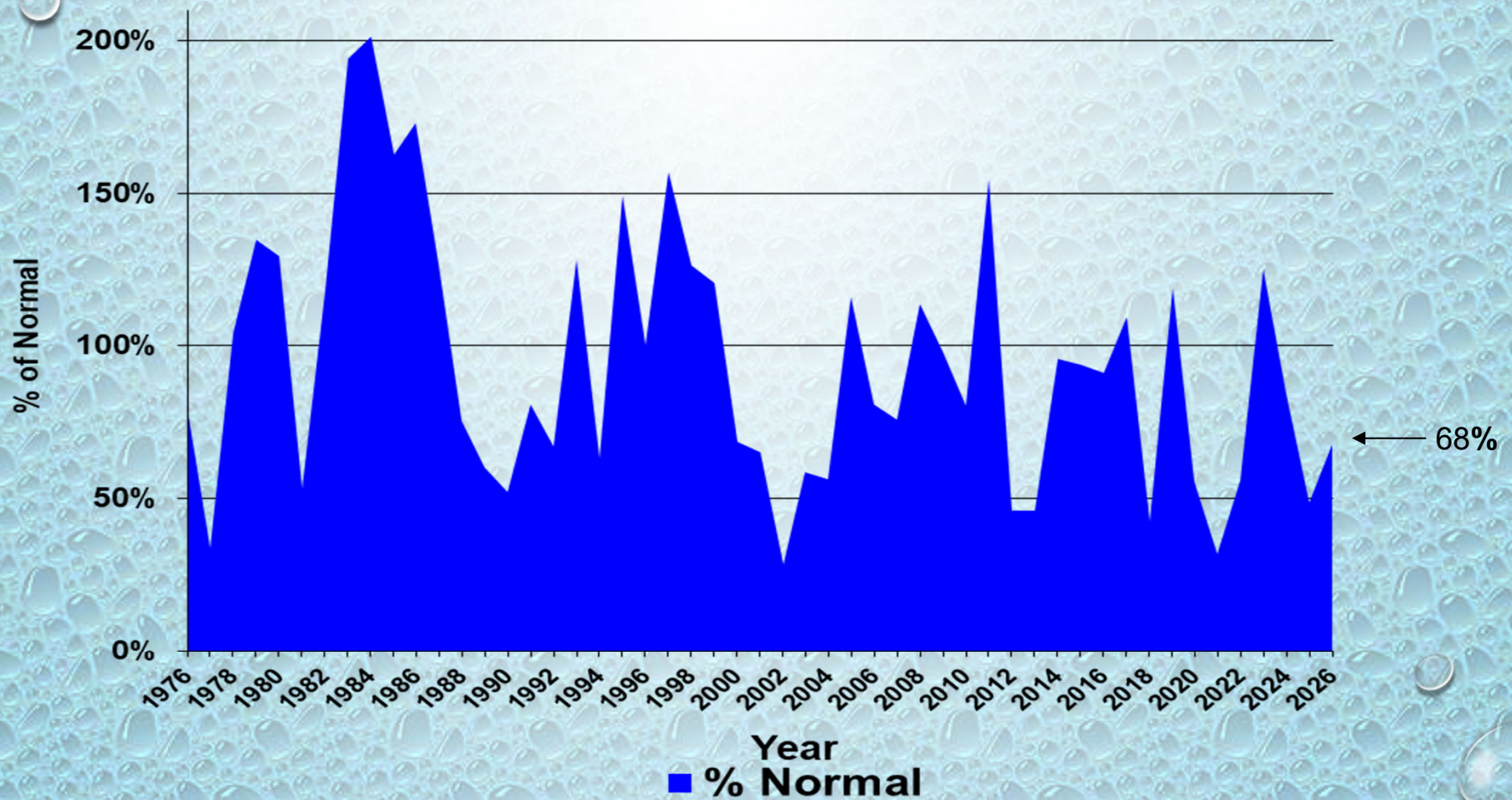
Water Year Precipitation to Date
(Average based on 1991 - 2020)



January 20, 2026

Arizona Power Authority

LAKE POWELL ANNUAL UNREGULATED INFLOW



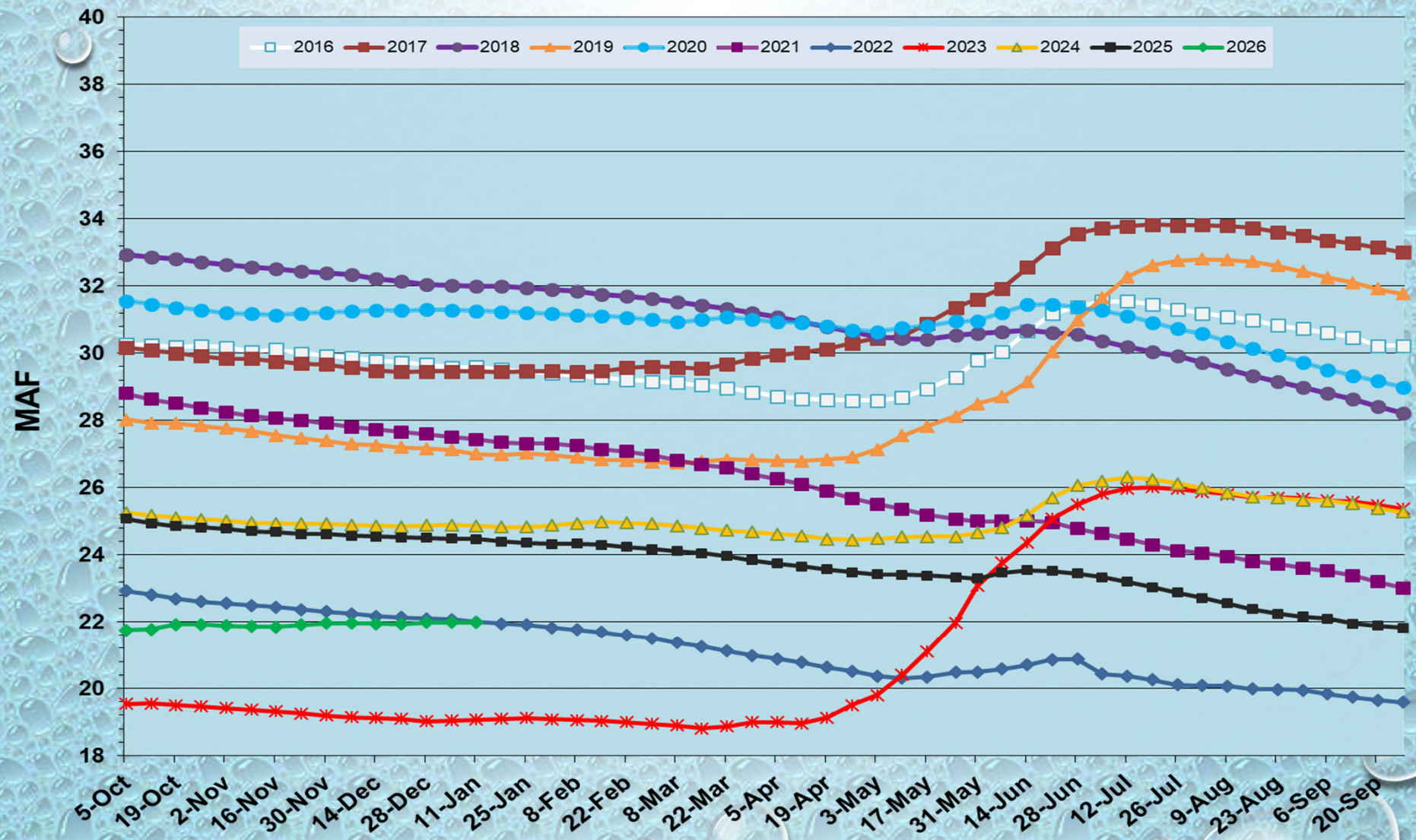
Normal = 9.60 MAF

1991 to 2020

January 20, 2026

Arizona Power Authority

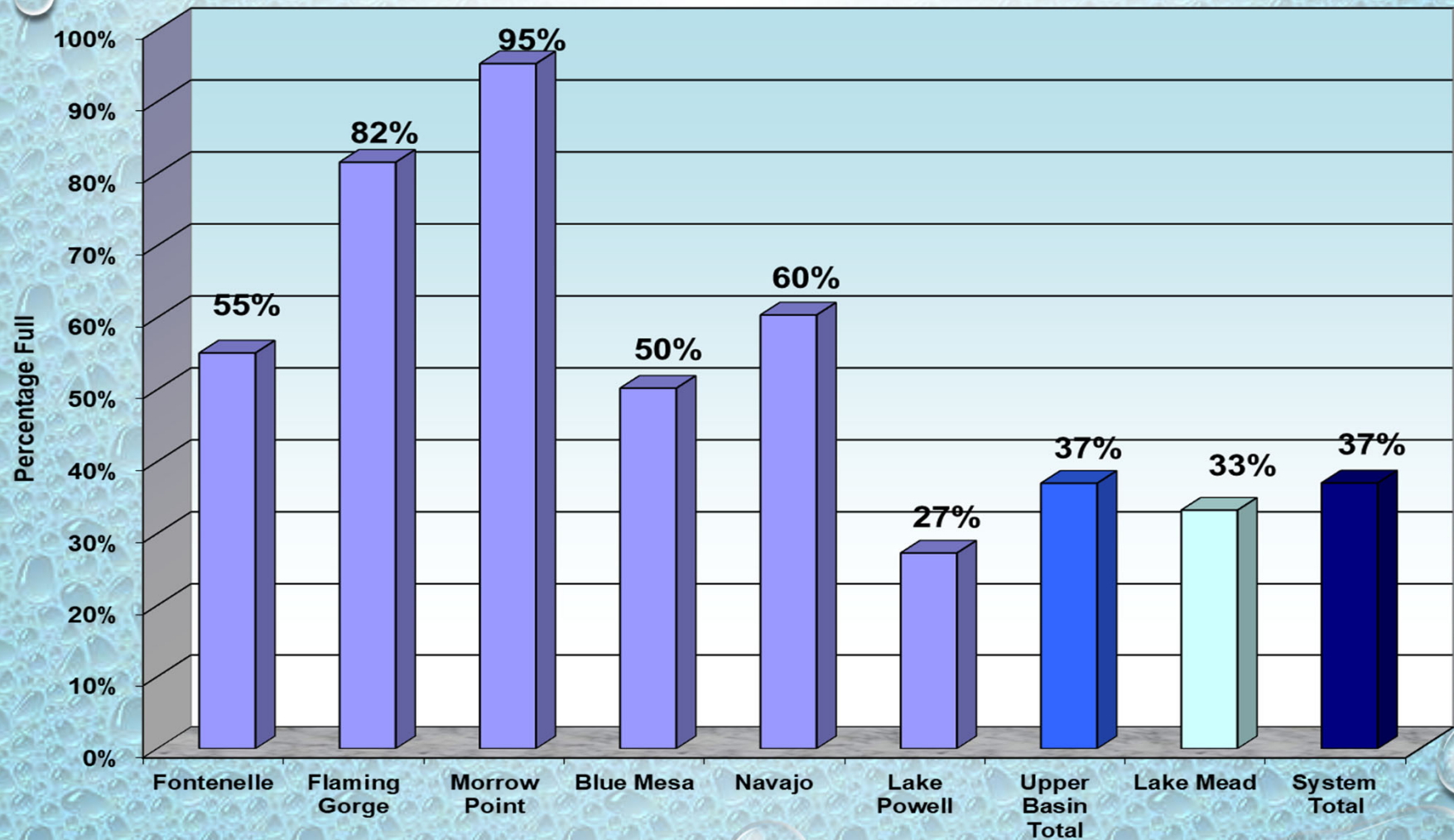
TOTAL SYSTEM CONTENTS



January 20, 2026

Arizona Power Authority

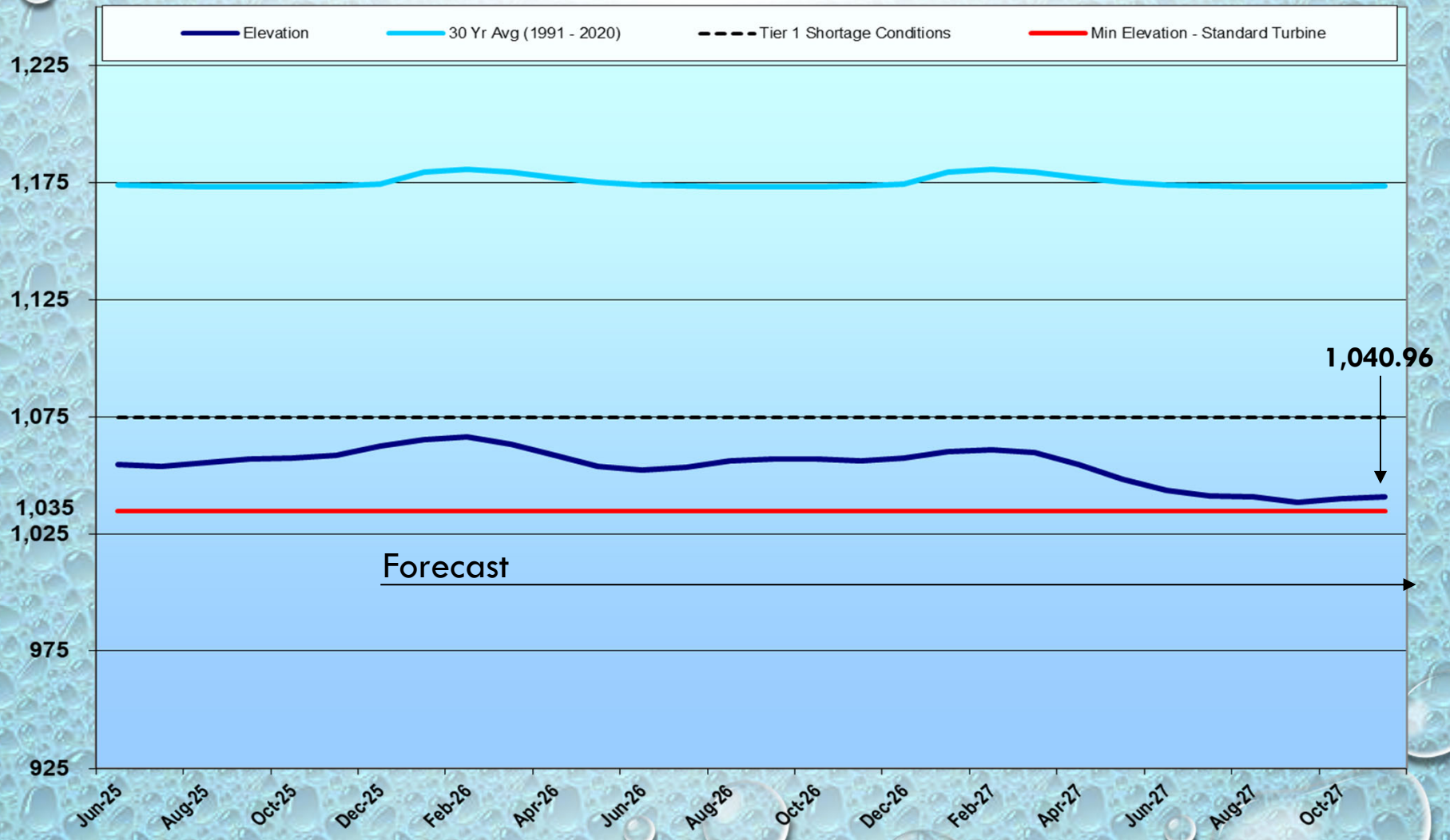
RESERVOIR AND SYSTEM CAPACITY AS OF 01/11/26



January 20, 2026

LAKE MEAD ELEVATION

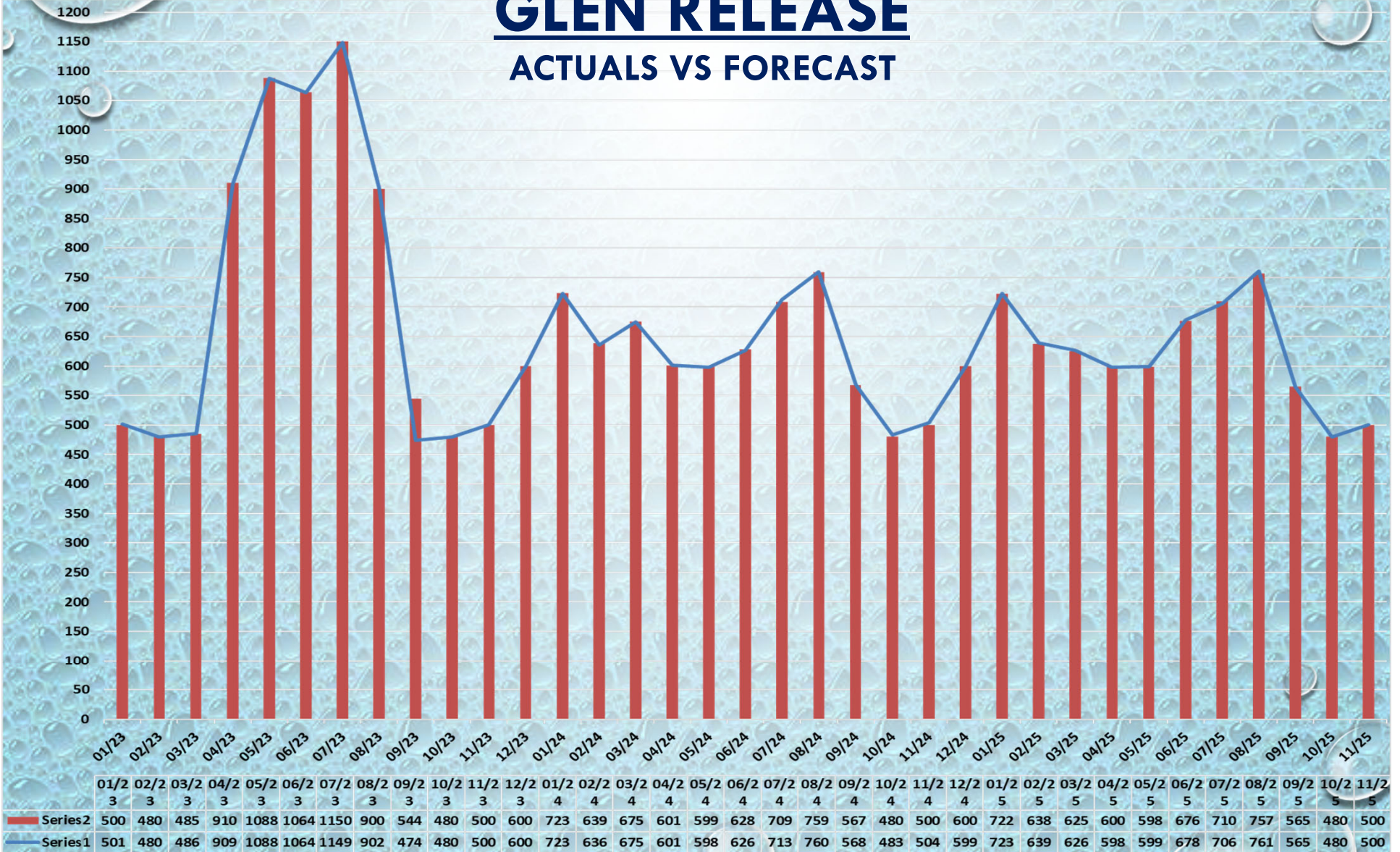
JUNE 2025 THROUGH NOVEMBER 2027



January 20, 2026

Arizona Power Authority

GLEN RELEASE ACTUALS VS FORECAST



January 20, 2026

Arizona Power Authority

HOOVER RELEASE

ACTUALS VS FORECAST



January 20, 2026

Arizona Power Authority

**Questions or Comments?
Call Doug Brimhall at:
602-368-4265**

**For a copy of this report, go to the Power Authority website
at: <http://www.powerauthority.org/>
and click on downloads.**

January 20, 2026