

ARIZONA POWER AUTHORITY BUDGET REQUEST DATA FISCAL YEARS 2025-2027

TAB

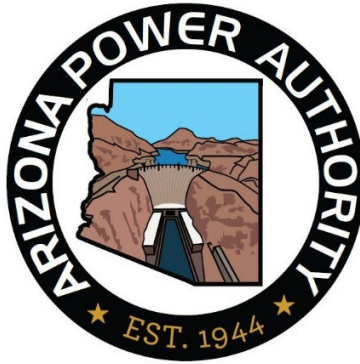
1. ABS Transmittal
2. Agency Summary
3. Five Year Strategic Plan
4. Admin Main Report
5. Fund 1112, 1113 & 1114 Revenue Forecast Methodology
6. Org Chart 2025
7. Program Budget Unit Summary of Expenditures & Budget Request for All Funds
8. Program Budget Unit Summary of Expenditures & Budget Request for Selected Funds
9. Program Expenditure Schedule
10. Program Summary of Expenditures & Budget Request for Selected Funds
11. Program Summary of Expenditures & Budget Request
12. Revenue Schedule
13. Sources & Uses
14. Summary of Expenditure & Budget Request for All Funds
15. Summary of Expenditure & Budget Request for Selected Funds

COMMISSION

JIM SWEENEY – CHAIRMAN
KIM OWENS – VICE CHAIRMAN
PHILIP C. BASHAW – COMMISSIONER
RUSSELL L. JONES – COMMISSIONER
JOHN F. SULLIVAN – COMMISSIONER

STAFF

JORDY FUENTES – EXECUTIVE DIRECTOR
HEATHER COLE – EXECUTIVE SECRETARY



ARIZONA POWER AUTHORITY

1810 W. ADAMS STREET
PHOENIX, AZ 85007-2697
(602) 368-4265

WWW.POWERAUTHORITY.ORG

August 26, 2025

The Honorable Katie Hobbs
Office of the Governor
1700 W. Washington St., Suite 800
Phoenix, AZ 85007-2883

Dear Governor:

Pursuant to A.R.S. § 35-113, please find one original and one copy of the Arizona Power Authority's ABS reports covering information for fiscal year 2026.

Sincerely,

A handwritten signature in blue ink, appearing to read "Jordy Fuentes".

Jordy Fuentes
Executive Director



State of Arizona Budget Request

State Agency

Power Authority

A.R.S. Citation: A.R.S. §§ 30-101 et seq.

Appropriated Funds

Governor Hobbs:

This and the accompanying budget schedules, statements and explanatory information constitute the operating budget request for this agency for Fiscal Year 2027.

To the best of my knowledge all statements and explanations contained in the estimates submitted are true and correct.

Total Amount Requested:

APA - General Fund

FY 2026
Expenditure
Plan

FY 2027
Funding
Issue

FY 2027
Total
Request

-

-

-

-

-

-

Non-Appropriated Funds

FY 2026
Expenditure
Plan

FY 2027
Funding
Issue

FY 2027
Total
Request

Total Amount Planned:

Interest Income Fund

Fund Deposits Fund

APA - General Fund

21,282.9

-

21,282.9

240.0

-

240.0

20,727.6

-

20,727.6

315.3

-

315.3

Power Authority Total:

21,282.9

-

21,282.9

Agency Head: **Jordy Fuentes**

Title: **Executive Director**

George C Fuentes

9/2/2025

(signature)

Phone: 6023684265

Prepared by: Sonseeahray Thayer

Email Address: sonseeahray@powerauthority.org

Date Prepared: September 2, 2025

AGENCY SUMMARY

Program: PAA Power Authority
Director: Jordy Fuentes, Executive Director
Phone: 6023684265
Statute: A.R.S. §§ 30-101 et seq.
Plan Contact: Sonseeahray Thayer, Financial Administrator
6023684265

Mission:

To responsibly administrate the Hoover Power allocation to the State of Arizona. In fulfilling this responsibility, the Power Authority strives to be an active leader in managing electric resources in a safe and environmentally prudent manner, and to provide active representation on behalf of the State of Arizona at federal, state, and local forums on issues that impact the public power community as a whole and that specifically involve Arizona and the Authority's power resources.

Description:

The Arizona Power Authority (APA) manages Arizona's allocation of hydroelectric power from the Hoover Dam for the overall benefit of the state. The APA cooperates with federal, state, and non-governmental agencies to address regulatory, environmental, and other matters that impact electric power and water uses of the Colorado River. In addition, the APA serves as an information resource for its customers on topics that impact their electric resources and the utilization of these resources. The Authority may also pursue generation and/or transmission projects that are within the APA's legislative mandate and are in the best interest of the state.

◆ Goal 1 To analyze cost of service studies and other factors affecting the cost of power from Hoover Dam, in an effort to keep future power costs to a minimum.

Performance Measures:

ML	Budget	Type	FY 2024 Actual	FY 2025 Estimate	FY 2025 Actual	FY 2026 Estimate	FY 2027 Estimate
<input checked="" type="checkbox"/>	<input type="checkbox"/>	IP Hoover annual revenue requirements (in thousands).	76,549	80,071	78,468	84,702	88,374

◆ Goal 2 To ensure the Power Authority has the opportunity to coordinate and cooperate with Federal agencies to supply and deliver Hoover power to the Authority's customers in the State of Arizona.

Performance Measures:

ML	Budget	Type	FY 2024 Actual	FY 2025 Estimate	FY 2025 Actual	FY 2026 Estimate	FY 2027 Estimate
<input checked="" type="checkbox"/>	<input type="checkbox"/>	IP Customers purchasing power from Arizona Power Authority	63	63	63	63	63

Agency Summary

Power Authority

Jordy Fuentes, Executive Director

Phone: 6023684265

A.R.S. §§ 30-101 et seq.

Mission:

To responsibly administrate the Hoover Power allocation to the State of Arizona. In fulfilling this responsibility, the Power Authority strives to be an active leader in managing electric resources in a safe and environmentally prudent manner, and to provide active representation on behalf of the State of Arizona at federal, state, and local forums on issues that impact the public power community as a whole and that specifically involve Arizona and the Authority's power resources.

Description:

The Arizona Power Authority (APA) manages Arizona's allocation of hydroelectric power from the Hoover Dam for the overall benefit of the state. The APA cooperates with federal, state, and non-governmental agencies to address regulatory, environmental, and other matters that impact electric power and water uses of the Colorado River. In addition, the APA serves as an information resource for its customers on topics that impact their electric resources and the utilization of these resources. The Authority may also pursue generation and/or transmission projects that are within the APA's legislative mandate and are in the best interest of the state.

Agency Summary: (\$ Thousands)

Program	FY 2025 Actual	FY 2026 Estimate	FY 2027 Estimate
► Arizona Power Authority	21,239.9	21,282.9	21,282.9
Agency Total:	21,239.9	21,282.9	21,282.9

Funding:

	FY 2025 Actual	FY 2026 Estimate	FY 2027 Estimate
Other Appropriated Funds	-	-	-
Other Non-Appropriated Funds	21,239.9	21,282.9	21,282.9
Total Funding	21,239.9	21,282.9	21,282.9

FTE Positions	9.0	9.0	9.0
----------------------	------------	------------	------------

5 Year Plan

Description:

Resource Assumptions

	FY 2028 Estimate	FY 2029 Estimate	FY 2030 Estimate
Full-Time Equivalent Positions	4.0	4.0	4.0
General Fund	-	-	-
Other Appropriated Funds	-	-	-
Non-Appropriated Funds	21,282.9	21,282.9	21,282.9
Federal Funds	-	-	-



Goal 1

To analyze cost of service studies and other factors affecting the cost of power from Hoover Dam, in an effort to keep future power costs to a minimum.

Performance Measures	FY 2024 Actual	FY 2025 Estimate	FY 2025 Actual	FY 2026 Estimate	FY 2027 Estimate
Hoover annual revenue requirements (in thousands).	76,549	80,071	78,468	84,702	88,374

- ◆ **Goal 2** To ensure the Power Authority has the opportunity to coordinate and cooperate with Federal agencies to supply and deliver Hoover power to the Authority's customers in the State of Arizona.

Performance Measures	FY 2024 Actual	FY 2025 Estimate	FY 2025 Actual	FY 2026 Estimate	FY 2027 Estimate
Customers purchasing power from Arizona Power Authority	63	63	63	63	63

Agency 5 Year Plan

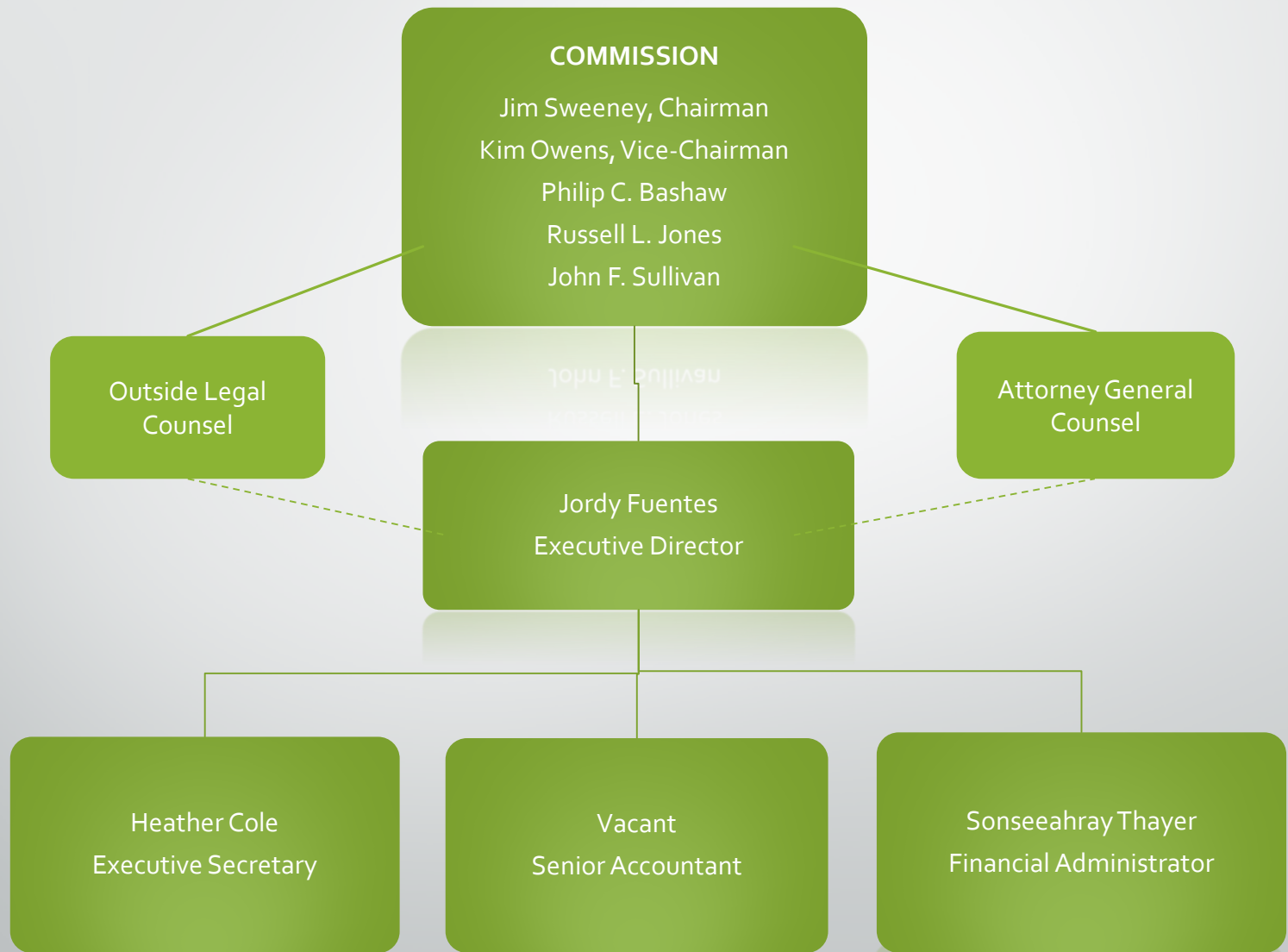
PAA Power Authority

Description:

Resource Assumptions

	FY 2028 Estimate	FY 2029 Estimate	FY 2030 Estimate
Full-Time Equivalent Positions	4.0	4.0	4.0
General Fund	-	-	-
Other Appropriated Funds	-	-	-
Non-Appropriated Funds	-	-	-
Federal Funds	-	-	-

Organizational Chart





ARIZONA POWER AUTHORITY



**FIVE YEAR STRATEGIC PLAN
FY2027 - FY2031**

Jordy Fuentes
Executive Director

TABLE OF CONTENTS

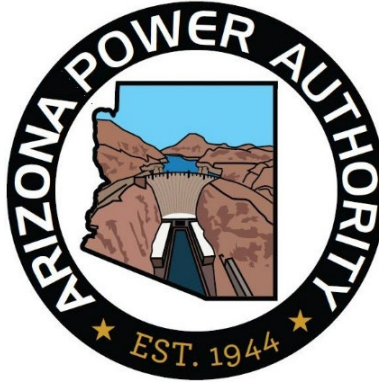
LETTER FROM EXECUTIVE DIRECTOR	2
DESCRIPTION OF BUSINESS.....	3
MISSION STATEMENT	4
STRATEGIC ISSUE #1	5
Fiscal Responsibility	
STRATEGIC ISSUE #2	5
Resource Focused	
STRATEGIC ISSUE #3	5
Customer Support	
GOALS & OBJECTIVES.....	6

COMMISSION

JIM SWEENEY – CHAIRMAN
KIM OWENS – VICE CHAIRMAN
PHILIP C. BASHAW – COMMISSIONER
RUSSELL L. JONES – COMMISSIONER
JOHN F. SULLIVAN – COMMISSIONER

STAFF

JORDY FUENTES – EXECUTIVE DIRECTOR
HEATHER COLE – EXECUTIVE SECRETARY



ARIZONA POWER AUTHORITY

1810 W. ADAMS STREET
PHOENIX, AZ 85007-2697
(602) 368-4265

WWW.POWERAUTHORITY.ORG

August 26, 2025

I hereby present the Five-Year Strategic Plan for the Arizona Power Authority. This Strategic Plan covers Fiscal Years 2027 through 2031.

The Authority remains dedicated to its mission to deliver affordable, reliable clean electric power to its customers throughout Arizona from Hoover Dam. Given the rapid pace of change occurring in the power sector today, Arizona Power Authority is proud to help manage such a reliable, renewable, carbon-free, low-cost energy for our state. It is an important role that will help provide stability for years to come. With the doubling of our current customer base in 2017, the Authority is continuing with a customer service program that will both educate and encourage customers and enhance staff to continue to be an excellent resource going forward. As technology is reshaping the energy market, we will monitor this evolving landscape and make sure Arizona, the Authority, and its customers are ready for what lies ahead. Given the potential for retirements of multiple customer representatives, the APA is developing training content for its customers.

Thank you,

Jordy Fuentes
Executive Director

ARIZONA POWER AUTHORITY

DESCRIPTION OF BUSINESS

The Arizona Power Authority (the “Authority”) is a body, corporate and politic, without taxing power, established by the Arizona Legislature on May 27, 1944 by the Power Authority Act. Under the Power Authority Act, the Authority is directed to obtain electric power developed from the mainstream of the Colorado River and sell such power to certain qualified purchasers. The Power Authority Act provides that the Authority must be a self-supporting agency and prohibits the Authority from incurring any obligation, which would be binding upon the State of Arizona.

The Authority supplies capacity and energy on a wholesale basis to certain power purchasers in the State of Arizona. The Authority’s primary source of power and energy is the Hoover Power Plant at Hoover Dam, located approximately 25 miles from Las Vegas, Nevada. Hoover Dam was dedicated in 1935 and the first generator of the Hoover Power Plant was in full operation in October 1936 and has been in continuous operation since. Power and energy from the Hoover Power Plant is transmitted to load centers in Arizona, California and Nevada. The Authority first contracted for Arizona’s share of Hoover power in 1952 (approximately 20%) and has continuously provided power and energy to its customers since that time.

The Authority is governed by a commission of five members appointed by the Governor and approved by the State Senate (the “Commission”). The term of office for each member is six years and the members select a chairman and vice-chairman from among its membership for two-year terms.

Pursuant to Arizona law, the Commission serves as the Authority’s regulatory body with the exclusive authority to establish electric prices for the capacity and energy generated at Hoover Dam and sold in Arizona. The Authority is a public nonprofit body, operates as an exempt agency, and is required to follow Open Meeting Laws regarding public notice requirements and public meetings. It also has the authority to implement changes in electric price schedules, as needed.

ARIZONA POWER AUTHORITY MISSION

To responsibly administrate the Hoover Power allocation to the State of Arizona. In fulfilling this responsibility, the Power Authority strives to be an active leader in managing electric resources in a safe and environmentally prudent manner, and to provide active representation on behalf of the State of Arizona at federal, state, and local forums on issues that impact the public power community as a whole and issues that specifically involve Arizona and the Power Authority's power resources.

STRATEGIC ISSUES

STRATEGIC ISSUE #1: *Fiscal Responsibility*

Manage resources for APA customers at the lowest possible rates consistent with sound business principles. Review expenditures, scheduled maintenance, additions, improvements and other cost of service factors affecting power generation costs at Hoover Dam.

	FY2025 (actual)	FY2026 (estimate)	FY2027 (estimate)	FY2028 (estimate)	FY2029 (estimate)	FY2029 (estimate)
Hoover Annual Revenue Requirements (in thousands)	78,468	84,702	88,374	89,947	92,075	95,477

STRATEGIC ISSUE #2: *Resource Focused*

The electrical power industry is going through radical changes today, coupled with the complexities of the Colorado River, and makes the APA a good resource for our customers. It is important that the APA understands the Water-Power-Agriculture nexus, works with fellow state agencies and NGOs in arenas vital to the betterment of Arizona, APA's customers and Public Power as a whole.

STRATEGIC ISSUE #3: *Customer Support*

As our customers face a wave of retirements and we continue to onboard new customers, the APA is developing training programs to assist in these transitions. It also is participating in the apparent shift towards a formalized market, seeking ways to maximize the value of Hoover capacity for its customers.

ARIZONA POWER AUTHORITY GOALS

2027 through 2031

GOAL #1: *To be a leader for Hoover, Arizona, the Colorado River and Public Power as a whole.*

OBJECTIVES: Be actively engaged in Hoover management, especially with Engineering and Operations Committee, Technical Review Committee and annual budgeting. Be a resource for all of our 63 customers. Develop and enhance relationships with state and federal legislators and federal staff.

GOAL #2: *Strive for Operational Excellence.*

OBJECTIVES: Evaluate, educate, enhance and encourage our existing and potential staff. Establish proper staffing for expected workload, provide training for existing staff, and control or reduce costs.

GOAL #3: *To Create a Culture of Customer Service.*

OBJECTIVES: Continue to improve the relationships with our customers. Have regular meetings with them at the APA and at their places of business. Create a 3rd place environment at the APA for customers, with flex workspaces, so customers can interact and engage with staff. Provide quarterly/monthly training for customers/staff and legislators.

Program Expenditure Schedule

Agency: Power Authority

Administrative Costs Summary

FY 2027

Personal Services	563.2
ERE	187.8
All Other	560.0
Administrative Costs Total:	1,311.0

Administrative Costs / Total Expenditure Ratio

Request

Admin %

FY 2027

21,282.9

6.2%

Arizona Power Authority

Fund 1112 Justification:

The primary component is interest income which is based on higher than normal federal funds rate and is calculated from funds deposited with the Arizona State Treasurer and Debt Service funds.

Arizona Power Authority

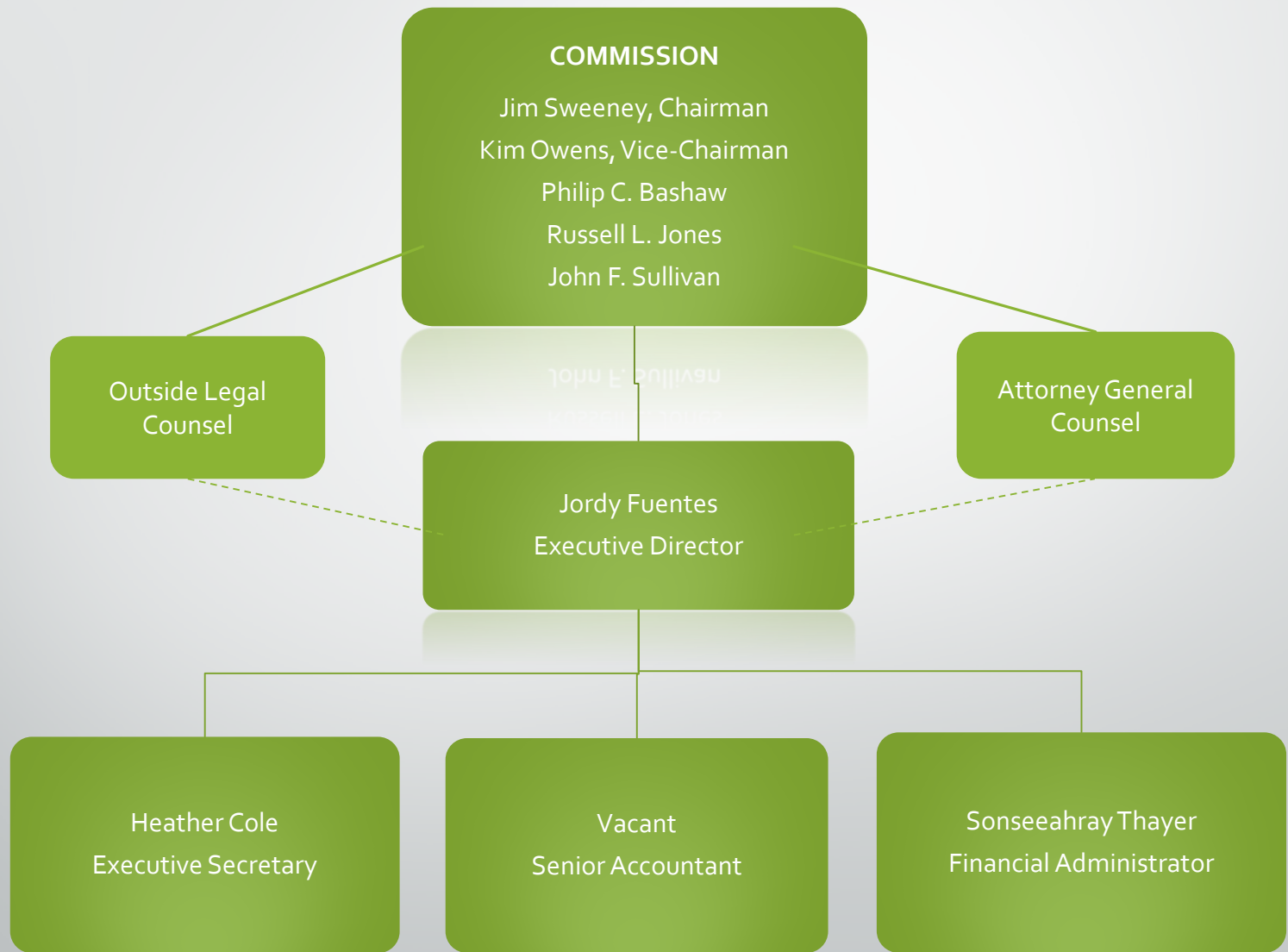
Fund 1113 Justification:

Future revenue which will be deposited into the Fund Deposit Fund (Power Authority) are primarily based upon Western Area Power Administration's projection of energy and capacity from Hoover Dam, debt service, and administration costs.

Fund 1114 Justification:

The primary component is supplemental requested by our customers and is treated as a pass through. Revenues which are deposited in the APA - General Fund are estimated from the anticipated customer needs for the coming year.

Organizational Chart



Program Budget Unit Summary of Expenditure and Budget Request for All Funds

Agency: Power Authority

	FY 2025 Actuals	FY 2026 Expenditure Plan	FY 2027 Funding Issue	FY 2027 Total Request
Program: PAA-1-0 Arizona Power Authority				

Expenditure Categories

FTE	9.0	9.0	-	9.0
Personal Services	516.0	563.2	-	563.2
Employee Related Expenditures	160.5	187.8	-	187.8
Subtotal Personal Services and ERE	676.5	751.0	-	751.0
Professional & Outside Services	375.2	408.6	-	408.6
Travel In-State	8.7	11.5	-	11.5
Travel Out-Of-State	27.1	40.0	-	40.0
Other Operating Expenditures	18,280.8	17,966.4	-	17,966.4
Capital Outlay	102.7	310.0	-	310.0
Non-Capital Equipment	32.7	32.3	-	32.3
Debt Service	1,725.8	1,724.0	-	1,724.0
Transfers-Out	10.4	39.1	-	39.1
Expenditure Categories Total:	21,239.9	21,282.9	-	21,282.9

Fund Source

Appropriated Funds

APA - General Fund (Appropriated)	-	-	-	-
Appropriated Funds Total:	-	-	-	-

Non-Appropriated Funds

Interest Income Fund (Non-Appropriated)	351.2	240.0	-	240.0
Fund Deposits Fund (Non-Appropriated)	20,498.6	20,727.6	-	20,727.6
APA - General Fund (Non-Appropriated)	390.1	315.3	-	315.3
Non-Appropriated Funds Total:	21,239.9	21,282.9	-	21,282.9
Arizona Power Authority Total:	21,239.9	21,282.9	-	21,282.9

Sub Program: PAA-1-1 Arizona Power Authority

Expenditure Categories

FTE	9.0	9.0	-	9.0
Personal Services	516.0	563.2	-	563.2
Employee Related Expenditures	160.5	187.8	-	187.8
Subtotal Personal Services and ERE	676.5	751.0	-	751.0

Program Budget Unit Summary of Expenditure and Budget Request for All Funds

Agency: Power Authority

	FY 2025 Actuals	FY 2026 Expenditure Plan	FY 2027 Funding Issue	FY 2027 Total Request
Program: PAA-1-0 Arizona Power Authority				
Sub Program: PAA-1-1 Arizona Power Authority				
Professional & Outside Services	375.2	408.6	-	408.6
Travel In-State	8.7	11.5	-	11.5
Travel Out-Of-State	27.1	40.0	-	40.0
Other Operating Expenditures	18,280.8	17,966.4	-	17,966.4
Capital Outlay	102.7	310.0	-	310.0
Non-Capital Equipment	32.7	32.3	-	32.3
Debt Service	1,725.8	1,724.0	-	1,724.0
Transfers-Out	10.4	39.1	-	39.1
Expenditure Categories Total:	21,239.9	21,282.9	-	21,282.9

Fund Source

Appropriated Funds

APA - General Fund (Appropriated)	-	-	-	-
Appropriated Funds Total:	-	-	-	-

Non-Appropriated Funds

Interest Income Fund (Non-Appropriated)	351.2	240.0	-	240.0
Fund Deposits Fund (Non-Appropriated)	20,498.6	20,727.6	-	20,727.6
APA - General Fund (Non-Appropriated)	390.1	315.3	-	315.3
Non-Appropriated Funds Total:	21,239.9	21,282.9	-	21,282.9
Arizona Power Authority Total:	21,239.9	21,282.9	-	21,282.9

Sub Program: PAA-1-2 SLI Resource Planning and Needs Assessment

Expenditure Categories

FTE	-	-	-	-
Personal Services	-	-	-	-
Employee Related Expenditures	-	-	-	-
Subtotal Personal Services and ERE	-	-	-	-
Professional & Outside Services	-	-	-	-
Travel In-State	-	-	-	-
Travel Out-Of-State	-	-	-	-
Other Operating Expenditures	-	-	-	-
Capital Outlay	-	-	-	-
Non-Capital Equipment	-	-	-	-

Program Budget Unit Summary of Expenditure and Budget Request for All Funds

Agency:	Power Authority
----------------	------------------------

	FY 2025 Actuals	FY 2026 Expenditure Plan	FY 2027 Funding Issue	FY 2027 Total Request
Program: PAA-1-0 Arizona Power Authority				
Sub Program: PAA-1-2 SLI Resource Planning and Needs Assessment				
Debt Service	-	-	-	-
Transfers-Out	-	-	-	-
Expenditure Categories Total:	-	-	-	-
Fund Source				
Appropriated Funds				
APA - General Fund (Appropriated)	-	-	-	-
Appropriated Funds Total:	-	-	-	-
Arizona Power Authority Total:	-	-	-	-

Program Budget Unit Summary of Expenditure and Budget Request for Selected Funds

Agency: Power Authority

	FY 2025 Actuals	FY 2026 Expenditure Plan	FY 2027 Funding Issue	FY 2027 Total Request
Program: PAA-1-0 Arizona Power Authority				
Fund: PA1112 Interest Income Fund				
Non-Appropriated				
Personal Services	-	-	-	-
Employee Related Expenditures	-	-	-	-
Subtotal Personal Services and ERE	-	-	-	-
Professional & Outside Services	-	-	-	-
Travel In-State	-	-	-	-
Travel Out-Of-State	-	-	-	-
Other Operating Expenditures	351.2	240.0	-	240.0
Capital Outlay	-	-	-	-
Non-Capital Equipment	-	-	-	-
Debt Service	-	-	-	-
Transfers-Out	-	-	-	-
Expenditure Categories Total:	351.2	240.0	-	240.0
Interest Income Fund Total:	351.2	240.0	-	240.0

Fund: PA1113 Fund Deposits Fund

Non-Appropriated				
Personal Services	516.0	563.2	-	563.2
Employee Related Expenditures	160.5	187.8	-	187.8
Subtotal Personal Services and ERE	676.5	751.0	-	751.0
Professional & Outside Services	375.2	408.6	-	408.6
Travel In-State	8.7	11.5	-	11.5
Travel Out-Of-State	27.1	40.0	-	40.0
Other Operating Expenditures	17,642.3	17,721.1	-	17,721.1
Capital Outlay	-	-	-	-
Non-Capital Equipment	32.7	32.3	-	32.3
Debt Service	1,725.8	1,724.0	-	1,724.0
Transfers-Out	10.4	39.1	-	39.1
Expenditure Categories Total:	20,498.6	20,727.6	-	20,727.6
Fund Deposits Fund Total:	20,498.6	20,727.6	-	20,727.6

Program Budget Unit Summary of Expenditure and Budget Request for Selected Funds

Agency: Power Authority

			FY 2025 Actuals	FY 2026 Expenditure Plan	FY 2027 Funding Issue	FY 2027 Total Request
Program:	PAA-1-0	Arizona Power Authority				
Fund:	PA1113	Fund Deposits Fund				
Fund:	PA1114	APA - General Fund				

Appropriated

Personal Services	-	-	-	-
Employee Related Expenditures	-	-	-	-
Subtotal Personal Services and ERE	-	-	-	-
Professional & Outside Services	-	-	-	-
Travel In-State	-	-	-	-
Travel Out-Of-State	-	-	-	-
Other Operating Expenditures	-	-	-	-
Capital Outlay	-	-	-	-
Non-Capital Equipment	-	-	-	-
Debt Service	-	-	-	-
Transfers-Out	-	-	-	-
Expenditure Categories Total:	-	-	-	-

Non-Appropriated

Personal Services	-	-	-	-
Employee Related Expenditures	-	-	-	-
Subtotal Personal Services and ERE	-	-	-	-
Professional & Outside Services	-	-	-	-
Travel In-State	-	-	-	-
Travel Out-Of-State	-	-	-	-
Other Operating Expenditures	287.4	5.3	-	5.3
Capital Outlay	102.7	310.0	-	310.0
Non-Capital Equipment	-	-	-	-
Debt Service	-	-	-	-
Transfers-Out	-	-	-	-
Expenditure Categories Total:	390.1	315.3	-	315.3
APA - General Fund Total:	390.1	315.3	-	315.3
Program Total for Select Funds:	21,239.9	21,282.9	-	21,282.9

Program Budget Unit Summary of Expenditure and Budget Request for Selected Funds

Agency: Power Authority

	FY 2025 Actuals	FY 2026 Expenditure Plan	FY 2027 Funding Issue	FY 2027 Total Request
Program: PAA-1-0 Arizona Power Authority				
Sub Program: PAA-1-1 Arizona Power Authority				
Fund: PA1112 Interest Income Fund				
Non-Appropriated				
Personal Services	-	-	-	-
Employee Related Expenditures	-	-	-	-
Subtotal Personal Services and ERE	-	-	-	-
Professional & Outside Services	-	-	-	-
Travel In-State	-	-	-	-
Travel Out-Of-State	-	-	-	-
Other Operating Expenditures	351.2	240.0	-	240.0
Capital Outlay	-	-	-	-
Non-Capital Equipment	-	-	-	-
Debt Service	-	-	-	-
Transfers-Out	-	-	-	-
Expenditure Categories Total:	351.2	240.0	-	240.0
Interest Income Fund Total:	351.2	240.0	-	240.0

Fund: PA1113 Fund Deposits Fund

Non-Appropriated				
Personal Services	516.0	563.2	-	563.2
Employee Related Expenditures	160.5	187.8	-	187.8
Subtotal Personal Services and ERE	676.5	751.0	-	751.0
Professional & Outside Services	375.2	408.6	-	408.6
Travel In-State	8.7	11.5	-	11.5
Travel Out-Of-State	27.1	40.0	-	40.0
Other Operating Expenditures	17,642.3	17,721.1	-	17,721.1
Capital Outlay	-	-	-	-
Non-Capital Equipment	32.7	32.3	-	32.3
Debt Service	1,725.8	1,724.0	-	1,724.0
Transfers-Out	10.4	39.1	-	39.1
Expenditure Categories Total:	20,498.6	20,727.6	-	20,727.6

Program Budget Unit Summary of Expenditure and Budget Request for Selected Funds

Agency: Power Authority

		FY 2025 Actuals	FY 2026 Expenditure Plan	FY 2027 Funding Issue	FY 2027 Total Request
Program:	PAA-1-0 Arizona Power Authority				
Fund:	PA1113 Fund Deposits Fund				
	Fund Deposits Fund Total:	20,498.6	20,727.6	-	20,727.6

Fund: PA1114 APA - General Fund

Appropriated

Personal Services	-	-	-	-
Employee Related Expenditures	-	-	-	-
Subtotal Personal Services and ERE	-	-	-	-
Professional & Outside Services	-	-	-	-
Travel In-State	-	-	-	-
Travel Out-Of-State	-	-	-	-
Other Operating Expenditures	-	-	-	-
Capital Outlay	-	-	-	-
Non-Capital Equipment	-	-	-	-
Debt Service	-	-	-	-
Transfers-Out	-	-	-	-
Expenditure Categories Total:	-	-	-	-

Non-Appropriated

Personal Services	-	-	-	-
Employee Related Expenditures	-	-	-	-
Subtotal Personal Services and ERE	-	-	-	-
Professional & Outside Services	-	-	-	-
Travel In-State	-	-	-	-
Travel Out-Of-State	-	-	-	-
Other Operating Expenditures	287.4	5.3	-	5.3
Capital Outlay	102.7	310.0	-	310.0
Non-Capital Equipment	-	-	-	-
Debt Service	-	-	-	-
Transfers-Out	-	-	-	-
Expenditure Categories Total:	390.1	315.3	-	315.3
APA - General Fund Total:	390.1	315.3	-	315.3

Program Budget Unit Summary of Expenditure and Budget Request for Selected Funds

Agency:	Power Authority
----------------	------------------------

	FY 2025 Actuals	FY 2026 Expenditure Plan	FY 2027 Funding Issue	FY 2027 Total Request
Program: PAA-1-0 Arizona Power Authority				
Sub Program Total for Select Funds:	21,239.9	21,282.9	-	21,282.9

Sub Program: PAA-1-2 SLI Resource Planning and Needs Assessment

Fund: PA1114 APA - General Fund

Appropriated

Personal Services	-	-	-	-
Employee Related Expenditures	-	-	-	-
Subtotal Personal Services and ERE	-	-	-	-
Professional & Outside Services	-	-	-	-
Travel In-State	-	-	-	-
Travel Out-Of-State	-	-	-	-
Other Operating Expenditures	-	-	-	-
Capital Outlay	-	-	-	-
Non-Capital Equipment	-	-	-	-
Debt Service	-	-	-	-
Transfers-Out	-	-	-	-
 Expenditure Categories Total:	 -	 -	 -	 -
 APA - General Fund Total:	 -	 -	 -	 -
 Sub Program Total for Select Funds:	 -	 -	 -	 -

Program Expenditure Schedule

Agency: Power Authority					
		FY 2025 Actuals	FY 2026 Expenditure Plan	FY 2027 Funding Issue	FY 2027 Total Request
Program: PAA-1-0 Arizona Power Authority					
FTE					
FTE		9.0	9.0	-	9.0
Expenditure Category Total:		-	-	-	-
Fund Source					
Non-Appropriated Funds					
PA1113	Fund Deposits Fund (Non-Appropriated)	9.0	9.0	-	9.0
Non-Appropriated Funds Total:		9.0	9.0	-	9.0
Fund Source Total:		9.0	9.0	-	9.0
Personal Services					
	Personal Services	512.6	559.6	-	559.6
	Board & Commission Members Compensation	3.3	3.6	-	3.6
Expenditure Category Total:		516.0	563.2	-	563.2
Fund Source					
Non-Appropriated Funds					
PA1113	Fund Deposits Fund (Non-Appropriated)	516.0	563.2	-	563.2
Non-Appropriated Funds Total:		516.0	563.2	-	563.2
Fund Source Total:		516.0	563.2	-	563.2
Employee Related Expenditures					
	Employee Related Expenses	160.5	187.8	-	187.8
Expenditure Category Total:		160.5	187.8	-	187.8
Fund Source					
Non-Appropriated Funds					
PA1113	Fund Deposits Fund (Non-Appropriated)	160.5	187.8	-	187.8
Non-Appropriated Funds Total:		160.5	187.8	-	187.8
Fund Source Total:		160.5	187.8	-	187.8
Professional & Outside Services					
	Professional and Outside Services	-	408.6	-	408.6
	External Investment Services	38.5	-	-	-
	Other External Financial Services	43.1	-	-	-
	External Legal Services	22.2	-	-	-

Program Expenditure Schedule

Agency: Power Authority					
		FY 2025 Actuals	FY 2026 Expenditure Plan	FY 2027 Funding Issue	FY 2027 Total Request
Program: PAA-1-0 Arizona Power Authority					
Education & Training		0.5	-	-	-
Other Professional & Outside Services		270.9	-	-	-
Expenditure Category Total:		375.2	408.6	-	408.6
Fund Source					
Non-Appropriated Funds					
PA1113 Fund Deposits Fund (Non-Appropriated)		375.2	408.6	-	408.6
Non-Appropriated Funds Total:		375.2	408.6	-	408.6
Fund Source Total:		375.2	408.6	-	408.6
Travel In-State					
Travel In-State		8.7	11.5	-	11.5
Expenditure Category Total:		8.7	11.5	-	11.5
Fund Source					
Non-Appropriated Funds					
PA1113 Fund Deposits Fund (Non-Appropriated)		8.7	11.5	-	11.5
Non-Appropriated Funds Total:		8.7	11.5	-	11.5
Fund Source Total:		8.7	11.5	-	11.5
Travel Out-Of-State					
Travel Out of State		27.1	40.0	-	40.0
Expenditure Category Total:		27.1	40.0	-	40.0
Fund Source					
Non-Appropriated Funds					
PA1113 Fund Deposits Fund (Non-Appropriated)		27.1	40.0	-	40.0
Non-Appropriated Funds Total:		27.1	40.0	-	40.0
Fund Source Total:		27.1	40.0	-	40.0
Other Operating Expenditures					
Other Operating Expenses		-	17,966.4	-	17,966.4
Other Operating Expenditures Budget & Appropriation		-	-	-	-
Risk Management Charges to State Agencies		4.7	-	-	-
Other External Telecommunication Service		7.1	-	-	-
Electricity		18.2	-	-	-

Program Expenditure Schedule

Agency: Power Authority

		FY 2025 Actuals	FY 2026 Expenditure Plan	FY 2027 Funding Issue	FY 2027 Total Request
Program: PAA-1-0 Arizona Power Authority					
Sanitation Waste Disposal		1.2	-	-	-
Repair & Maintenance - Buildings		11.6	-	-	-
Office Supplies		2.3	-	-	-
Other Resale Supplies		17,597.2	-	-	-
Conference Registration / Attendance Fees		26.2	-	-	-
Internal Printing		0.2	-	-	-
Postage & Delivery		0.1	-	-	-
Other Miscellaneous Operating		612.1	-	-	-
Expenditure Category Total:		18,280.8	17,966.4	-	17,966.4
Fund Source					
Appropriated Funds					
PA1114 APA - General Fund (Appropriated)		-	-	-	-
Appropriated Funds Total:		-	-	-	-
Non-Appropriated Funds					
PA1112 Interest Income Fund (Non-Appropriated)		351.2	240.0	-	240.0
PA1113 Fund Deposits Fund (Non-Appropriated)		17,642.3	17,721.1	-	17,721.1
PA1114 APA - General Fund (Non-Appropriated)		287.4	5.3	-	5.3
Non-Appropriated Funds Total:		18,280.8	17,966.4	-	17,966.4
Fund Source Total:		18,280.8	17,966.4	-	17,966.4
Capital Outlay					
Capital Outlay		102.7	310.0	-	310.0
Expenditure Category Total:		102.7	310.0	-	310.0
Fund Source					
Non-Appropriated Funds					
PA1114 APA - General Fund (Non-Appropriated)		102.7	310.0	-	310.0
Non-Appropriated Funds Total:		102.7	310.0	-	310.0
Fund Source Total:		102.7	310.0	-	310.0
Non-Capital Equipment					
Non-Capital Resources		-	32.3	-	32.3
Computer Equipment – Non- Capitalized Purchases		24.5	-	-	-
Purchased or licensed software / website		8.2	-	-	-
Expenditure Category Total:		32.7	32.3	-	32.3

Program Expenditure Schedule

Agency: Power Authority					
		FY 2025 Actuals	FY 2026 Expenditure Plan	FY 2027 Funding Issue	FY 2027 Total Request
Program: PAA-1-0 Arizona Power Authority					
Fund Source					
Non-Appropriated Funds					
PA1113	Fund Deposits Fund (Non-Appropriated)	32.7	32.3	-	32.3
	Non-Appropriated Funds Total:	32.7	32.3	-	32.3
	Fund Source Total:	32.7	32.3	-	32.3
Debt Service					
	Debt Service	1,725.8	1,724.0	-	1,724.0
	Expenditure Category Total:	1,725.8	1,724.0	-	1,724.0
Fund Source					
Non-Appropriated Funds					
PA1113	Fund Deposits Fund (Non-Appropriated)	1,725.8	1,724.0	-	1,724.0
	Non-Appropriated Funds Total:	1,725.8	1,724.0	-	1,724.0
	Fund Source Total:	1,725.8	1,724.0	-	1,724.0
Transfers-Out					
	Transfers	10.4	39.1	-	39.1
	Expenditure Category Total:	10.4	39.1	-	39.1
Fund Source					
Non-Appropriated Funds					
PA1113	Fund Deposits Fund (Non-Appropriated)	10.4	39.1	-	39.1
	Non-Appropriated Funds Total:	10.4	39.1	-	39.1
	Fund Source Total:	10.4	39.1	-	39.1
Employee Retirement Coverage					
Retirement System		FTE	Personal Services	Fund#	
Non-Participating		5.0	3.6	PA1113-N	
Arizona State Retirement System		4.0	559.6	PA1113-N	
Sub Program: PAA-1-1 Arizona Power Authority					

Program Expenditure Schedule

Agency: Power Authority					
		FY 2025 Actuals	FY 2026 Expenditure Plan	FY 2027 Funding Issue	FY 2027 Total Request
Program: PAA-1-0 Arizona Power Authority					
Sub Program: PAA-1-1 Arizona Power Authority					
FTE					
FTE		9.0	9.0	-	9.0
Expenditure Category Total:		-	-	-	-
Fund Source					
Non-Appropriated Funds					
PA1113	Fund Deposits Fund (Non-Appropriated)	9.0	9.0	-	9.0
Non-Appropriated Funds Total:		9.0	9.0	-	9.0
Fund Source Total:		9.0	9.0	-	9.0
Personal Services					
	Personal Services	512.6	559.6	-	559.6
	Board & Commission Members Compensation	3.3	3.6	-	3.6
Expenditure Category Total:		516.0	563.2	-	563.2
Fund Source					
Non-Appropriated Funds					
PA1113	Fund Deposits Fund (Non-Appropriated)	516.0	563.2	-	563.2
Non-Appropriated Funds Total:		516.0	563.2	-	563.2
Fund Source Total:		516.0	563.2	-	563.2
Employee Related Expenditures					
	Employee Related Expenses	160.5	187.8	-	187.8
Expenditure Category Total:		160.5	187.8	-	187.8
Fund Source					
Non-Appropriated Funds					
PA1113	Fund Deposits Fund (Non-Appropriated)	160.5	187.8	-	187.8
Non-Appropriated Funds Total:		160.5	187.8	-	187.8
Fund Source Total:		160.5	187.8	-	187.8

Program Expenditure Schedule

Agency: Power Authority					
		FY 2025 Actuals	FY 2026 Expenditure Plan	FY 2027 Funding Issue	FY 2027 Total Request
Program: PAA-1-0 Arizona Power Authority					
Sub Program: PAA-1-1 Arizona Power Authority					
Professional & Outside Services					
Professional and Outside Services	-	408.6	-	408.6	
External Investment Services	38.5	-	-	-	
Other External Financial Services	43.1	-	-	-	
External Legal Services	22.2	-	-	-	
Education & Training	0.5	-	-	-	
Other Professional & Outside Services	270.9	-	-	-	
Expenditure Category Total:	375.2	408.6	-	408.6	
Fund Source					
Non-Appropriated Funds					
PA1113 Fund Deposits Fund (Non-Appropriated)	375.2	408.6	-	408.6	
Non-Appropriated Funds Total:	375.2	408.6	-	408.6	
Fund Source Total:	375.2	408.6	-	408.6	
Travel In-State					
Travel In-State	8.7	11.5	-	11.5	
Expenditure Category Total:	8.7	11.5	-	11.5	
Fund Source					
Non-Appropriated Funds					
PA1113 Fund Deposits Fund (Non-Appropriated)	8.7	11.5	-	11.5	
Non-Appropriated Funds Total:	8.7	11.5	-	11.5	
Fund Source Total:	8.7	11.5	-	11.5	
Travel Out-Of-State					
Travel Out of State	27.1	40.0	-	40.0	
Expenditure Category Total:	27.1	40.0	-	40.0	
Fund Source					
Non-Appropriated Funds					
PA1113 Fund Deposits Fund (Non-Appropriated)	27.1	40.0	-	40.0	
Non-Appropriated Funds Total:	27.1	40.0	-	40.0	
Fund Source Total:	27.1	40.0	-	40.0	

Program Expenditure Schedule

Agency:	Power Authority
----------------	------------------------

	FY 2025 Actuals	FY 2026 Expenditure Plan	FY 2027 Funding Issue	FY 2027 Total Request
Program: PAA-1-0 Arizona Power Authority				
Sub Program: PAA-1-1 Arizona Power Authority				
Other Operating Expenditures				
Other Operating Expenses	-	17,966.4	-	17,966.4
Other Operating Expenditures Budget & Appropriation	-	-	-	-
Risk Management Charges to State Agencies	4.7	-	-	-
Other External Telecommunication Service	7.1	-	-	-
Electricity	18.2	-	-	-
Sanitation Waste Disposal	1.2	-	-	-
Repair & Maintenance - Buildings	11.6	-	-	-
Office Supplies	2.3	-	-	-
Other Resale Supplies	17,597.2	-	-	-
Conference Registration / Attendance Fees	26.2	-	-	-
Internal Printing	0.2	-	-	-
Postage & Delivery	0.1	-	-	-
Other Miscellaneous Operating	612.1	-	-	-
Expenditure Category Total:	18,280.8	17,966.4	-	17,966.4
Fund Source				
Appropriated Funds				
PA1114 APA - General Fund (Appropriated)	-	-	-	-
Appropriated Funds Total:	-	-	-	-
Non-Appropriated Funds				
PA1112 Interest Income Fund (Non-Appropriated)	351.2	240.0	-	240.0
PA1113 Fund Deposits Fund (Non-Appropriated)	17,642.3	17,721.1	-	17,721.1
PA1114 APA - General Fund (Non-Appropriated)	287.4	5.3	-	5.3
Non-Appropriated Funds Total:	18,280.8	17,966.4	-	17,966.4
Fund Source Total:	18,280.8	17,966.4	-	17,966.4

Program Expenditure Schedule

Agency: Power Authority					
		FY 2025 Actuals	FY 2026 Expenditure Plan	FY 2027 Funding Issue	FY 2027 Total Request
Program: PAA-1-0 Arizona Power Authority					
Sub Program: PAA-1-1 Arizona Power Authority					
Capital Outlay					
Capital Outlay		102.7	310.0	-	310.0
Expenditure Category Total:		102.7	310.0	-	310.0
Fund Source					
Non-Appropriated Funds					
PA1114	APA - General Fund (Non-Appropriated)	102.7	310.0	-	310.0
	Non-Appropriated Funds Total:	102.7	310.0	-	310.0
	Fund Source Total:	102.7	310.0	-	310.0
Non-Capital Equipment					
Non-Capital Resources		-	32.3	-	32.3
Computer Equipment – Non- Capitalized Purchases		24.5	-	-	-
Purchased or licensed software / website		8.2	-	-	-
Expenditure Category Total:		32.7	32.3	-	32.3
Fund Source					
Non-Appropriated Funds					
PA1113	Fund Deposits Fund (Non-Appropriated)	32.7	32.3	-	32.3
	Non-Appropriated Funds Total:	32.7	32.3	-	32.3
	Fund Source Total:	32.7	32.3	-	32.3
Debt Service					
Debt Service		1,725.8	1,724.0	-	1,724.0
Expenditure Category Total:		1,725.8	1,724.0	-	1,724.0
Fund Source					
Non-Appropriated Funds					
PA1113	Fund Deposits Fund (Non-Appropriated)	1,725.8	1,724.0	-	1,724.0
	Non-Appropriated Funds Total:	1,725.8	1,724.0	-	1,724.0
	Fund Source Total:	1,725.8	1,724.0	-	1,724.0

Program Expenditure Schedule

Agency:	Power Authority
----------------	------------------------

	FY 2025 Actuals	FY 2026 Expenditure Plan	FY 2027 Funding Issue	FY 2027 Total Request
Program: PAA-1-0 Arizona Power Authority				
Sub Program: PAA-1-1 Arizona Power Authority				
Transfers-Out				
Transfers	10.4	39.1	-	39.1
Expenditure Category Total:	10.4	39.1	-	39.1

Fund Source				
Non-Appropriated Funds				
PA1113 Fund Deposits Fund (Non-Appropriated)	10.4	39.1	-	39.1
Non-Appropriated Funds Total:	10.4	39.1	-	39.1
Fund Source Total:	10.4	39.1	-	39.1

Employee Retirement Coverage				
Retirement System	FTE	Personal Services	Fund#	
Non-Participating	5.0	3.6	PA1113-N	
Arizona State Retirement System	4.0	559.6	PA1113-N	

Sub Program: PAA-1-2 SLI Resource Planning and Needs Assessment
--

Other Operating Expenditures				
Other Operating Expenditures Budget & Appropriation	-	-	-	-
Expenditure Category Total:	-	-	-	-

Fund Source				
Appropriated Funds				
PA1114 APA - General Fund (Appropriated)	-	-	-	-
Appropriated Funds Total:	-	-	-	-
Fund Source Total:	-	-	-	-

Employee Retirement Coverage				
Retirement System	FTE	Personal Services	Fund#	
	-	-		

Program Summary of Expenditure and Budget Request for Selected Funds

Agency:	Power Authority
Program:	Arizona Power Authority
Fund:	PA1112 Interest Income Fund (Non-Appropriated)

Program Expenditures		FY 2025 Actuals	FY 2026 Expenditure Plan	FY 2027 Funding Issue	FY 2027 Total Request
PAA-1-1	Arizona Power Authority	351.2	240.0	-	240.0
	Interest Income Fund (Non-Appropriated)	351.2	240.0	-	240.0
	Summary Total:				
Non-Appropriated Funding					
6000	Personal Services	-	-	-	-
6100	Employee Related Expenditures	-	-	-	-
	Subtotal Personal Services and ERE	-	-	-	-
6200	Professional & Outside Services	-	-	-	-
6500	Travel In-State	-	-	-	-
6600	Travel Out-Of-State	-	-	-	-
7000	Other Operating Expenditures	351.2	240.0	-	240.0
8100	Capital Outlay	-	-	-	-
8500	Non-Capital Equipment	-	-	-	-
8600	Debt Service	-	-	-	-
9100	Transfers-Out	-	-	-	-
	Expenditure Categories Total:	351.2	240.0	-	240.0
	Fund PA1112 - N Total:	351.2	240.0	-	240.0

Program Summary of Expenditure and Budget Request for Selected Funds

Agency:	Power Authority
Program:	Arizona Power Authority
Fund:	PA1113 Fund Deposits Fund (Non-Appropriated)

Program Expenditures		FY 2025 Actuals	FY 2026 Expenditure Plan	FY 2027 Funding Issue	FY 2027 Total Request
PAA-1-1	Arizona Power Authority	20,498.6	20,727.6	-	20,727.6
	Fund Deposits Fund (Non-Appropriated)	20,498.6	20,727.6	-	20,727.6
	Summary Total:				
Non-Appropriated Funding					
6000	Personal Services	516.0	563.2	-	563.2
6100	Employee Related Expenditures	160.5	187.8	-	187.8
	Subtotal Personal Services and ERE	676.5	751.0	-	751.0
6200	Professional & Outside Services	375.2	408.6	-	408.6
6500	Travel In-State	8.7	11.5	-	11.5
6600	Travel Out-Of-State	27.1	40.0	-	40.0
7000	Other Operating Expenditures	17,642.3	17,721.1	-	17,721.1
8100	Capital Outlay	-	-	-	-
8500	Non-Capital Equipment	32.7	32.3	-	32.3
8600	Debt Service	1,725.8	1,724.0	-	1,724.0
9100	Transfers-Out	10.4	39.1	-	39.1
	Expenditure Categories Total:	20,498.6	20,727.6	-	20,727.6
	Fund PA1113 - N Total:	20,498.6	20,727.6	-	20,727.6

Program Summary of Expenditure and Budget Request for Selected Funds

Agency:	Power Authority
Program:	Arizona Power Authority
Fund:	PA1114 APA - General Fund (Appropriated)

Program Expenditures		FY 2025 Actuals	FY 2026 Expenditure Plan	FY 2027 Funding Issue	FY 2027 Total Request
PAA-1-1	Arizona Power Authority	-	-	-	-
PAA-1-2	SLI Resource Planning and Needs Assessment	-	-	-	-
APA - General Fund (Appropriated) Summary Total:		-	-	-	-
Appropriated Funding					
6000	Personal Services	-	-	-	-
6100	Employee Related Expenditures	-	-	-	-
Subtotal Personal Services and ERE		-	-	-	-
6200	Professional & Outside Services	-	-	-	-
6500	Travel In-State	-	-	-	-
6600	Travel Out-Of-State	-	-	-	-
7000	Other Operating Expenditures	-	-	-	-
8100	Capital Outlay	-	-	-	-
8500	Non-Capital Equipment	-	-	-	-
8600	Debt Service	-	-	-	-
9100	Transfers-Out	-	-	-	-
Expenditure Categories Total:		-	-	-	-
Fund PA1114 - A Total:		-	-	-	-

Program Summary of Expenditure and Budget Request for Selected Funds

Agency:	Power Authority
Program:	Arizona Power Authority
Fund:	PA1114 APA - General Fund (Non-Appropriated)

Program Expenditures		FY 2025 Actuals	FY 2026 Expenditure Plan	FY 2027 Funding Issue	FY 2027 Total Request
PAA-1-1	Arizona Power Authority	390.1	315.3	-	315.3
APA - General Fund (Non-Appropriated) Summary Total:		390.1	315.3	-	315.3
Non-Appropriated Funding					
6000	Personal Services	-	-	-	-
6100	Employee Related Expenditures	-	-	-	-
Subtotal Personal Services and ERE		-	-	-	-
6200	Professional & Outside Services	-	-	-	-
6500	Travel In-State	-	-	-	-
6600	Travel Out-Of-State	-	-	-	-
7000	Other Operating Expenditures	287.4	5.3	-	5.3
8100	Capital Outlay	102.7	310.0	-	310.0
8500	Non-Capital Equipment	-	-	-	-
8600	Debt Service	-	-	-	-
9100	Transfers-Out	-	-	-	-
Expenditure Categories Total:		390.1	315.3	-	315.3
Fund PA1114 - N Total:		390.1	315.3	-	315.3
Arizona Power Authority Total:		21,239.9	21,282.9	-	21,282.9

Program Summary of Expenditure and Budget Request

Agency:	Power Authority
Program:	Arizona Power Authority

Program Summary		FY 2025 Actuals	FY 2026 Expenditure Plan	FY 2027 Funding Issue	FY 2027 Total Request
PAA-1-1	Arizona Power Authority	21,239.9	21,282.9	-	21,282.9
	SLI Resource Planning and Needs	-	-	-	-
PAA-1-2	Assessment				
Arizona Power Authority Summary Total:		21,239.9	21,282.9	-	21,282.9
Expenditure Categories					
FTE	FTE	9.0	9.0	-	9.0
6000	Personal Services	516.0	563.2	-	563.2
6100	Employee Related Expenditures	160.5	187.8	-	187.8
	Subtotal Personal Services and ERE	676.5	751.0	-	751.0
6200	Professional & Outside Services	375.2	408.6	-	408.6
6500	Travel In-State	8.7	11.5	-	11.5
6600	Travel Out-Of-State	27.1	40.0	-	40.0
7000	Other Operating Expenditures	18,280.8	17,966.4	-	17,966.4
8100	Capital Outlay	102.7	310.0	-	310.0
8500	Non-Capital Equipment	32.7	32.3	-	32.3
8600	Debt Service	1,725.8	1,724.0	-	1,724.0
9100	Transfers-Out	10.4	39.1	-	39.1
Expenditure Categories Total:		21,239.9	21,282.9	-	21,282.9
Fund Source					
Appropriated Funds					
PA1114	APA - General Fund (Appropriated)	-	-	-	-
Appropriated Funds Total:		-	-	-	-
Non-Appropriated Funds					
PA1112	Interest Income Fund (Non-Appropriated)	351.2	240.0	-	240.0
PA1113	Fund Deposits Fund (Non-Appropriated)	20,498.6	20,727.6	-	20,727.6
PA1114	APA - General Fund (Non-Appropriated)	390.1	315.3	-	315.3
Non-Appropriated Funds Total:		21,239.9	21,282.9	-	21,282.9
Arizona Power Authority Summary Total:		21,239.9	21,282.9	-	21,282.9

Revenue Schedule

Agency: Power Authority

Fund: PA1112 Interest Income Fund

AFIS Code	Category of Receipt and Description	FY 2025 Actuals	FY 2026 Estimate	FY 2027 Request
4631	Treasurer's Interest Income	215.3	192.0	192.0
4634	Other Investment Income	135.9	48.0	48.0
Interest Income Fund Total:		351.2	240.0	240.0

Forecast Methodology

See Attachment

Fund: PA1113 Fund Deposits Fund

AFIS Code	Category of Receipt and Description	FY 2025 Actuals	FY 2026 Estimate	FY 2027 Request
4379	Other Charges for Goods	20,491.7	20,727.6	20,727.6
4699	Miscellaneous Receipts	6.9	-	-
Fund Deposits Fund Total:		20,498.6	20,727.6	20,727.6

Forecast Methodology

See Attachment

Fund: PA1114 APA - General Fund

AFIS Code	Category of Receipt and Description	FY 2025 Actuals	FY 2026 Estimate	FY 2027 Request
4379	Other Charges for Goods	142.4	134.9	134.9
4631	Treasurer's Interest Income	237.3	132.0	132.0
4699	Miscellaneous Receipts	-	43.2	43.2
4901	Operating Transfers In	10.4	5.2	5.2
APA - General Fund Total:		390.1	315.3	315.3

Forecast Methodology

See Attachment

Sources and Uses

Agency: Power Authority

Fund: PA1112 Interest Income Fund

Interest Income is received from investments with the Arizona State Treasurer and from investments in the Debt Service accounts. This income is used for the operating expenses of the Power Authority.

Cash Flow Summary

	FY 2025 Actuals	FY 2026 Estimate	FY 2027 Request
Beginning Balance	-	-	-
Revenue (from Revenue Schedule)	351.2	240.0	240.0
Total Available	351.2	240.0	240.0
Total Appropriated Disbursements	-	-	-
Total Non-Appropriated Disbursements	351.2	240.0	240.0
Balance Forward to Next Year	-	-	-

Appropriated Expenditure

Expenditure Categories	FY 2025 Actuals	FY 2026 Estimate	FY 2027 Request
Personal Services	-	-	-
Employee Related Expenditures	-	-	-
Professional & Outside Services	-	-	-
Travel In-State	-	-	-
Travel Out-Of-State	-	-	-
Food	-	-	-
Aid To Organizations & Individuals	-	-	-
Other Operating Expenditures	-	-	-
Equipment	-	-	-
Capital Outlay	-	-	-
Capital Equipment	-	-	-
Non-Capital Equipment	-	-	-
Debt Service	-	-	-
Cost Allocation & Indirect Costs	-	-	-
Transfers-Out	-	-	-
Appropriated Expenditure Sub-Total:	-	-	-
Non-Lapsing Authority from Prior Years	-	-	-
Administrative Adjustments	-	-	-
Capital Projects (Land, Bldgs, Improv)	-	-	-
Appropriated 27th Pay Roll	-	-	-
Legislative Fund Transfers	-	-	-
IT Project Transfers	-	-	-
Proposed Fund Transfer	-	-	-
Residual Equity Transfer	-	-	-
Transfer Due to Fund Balance Cap	-	-	-

Sources and Uses

Agency: Power Authority			
Fund: PA1112 Interest Income Fund			
Prior Committed or Obligated Expenditures (no entry for AY)	-	-	-
Non-Appropriated 27th Pay Roll	-	-	-
Appropriated Expenditure Total:	-	-	-
Appropriated FTE	-	-	-
Non-Appropriated Expenditure			
Expenditure Categories	FY 2025 Actuals	FY 2026 Estimate	FY 2027 Request
Personal Services	-	-	-
Employee Related Expenditures	-	-	-
Professional & Outside Services	-	-	-
Travel In-State	-	-	-
Travel Out-Of-State	-	-	-
Food	-	-	-
Aid To Organizations & Individuals	-	-	-
Other Operating Expenditures	351.2	240.0	240.0
Equipment	-	-	-
Capital Outlay	-	-	-
Capital Equipment	-	-	-
Non-Capital Equipment	-	-	-
Debt Service	-	-	-
Cost Allocation & Indirect Costs	-	-	-
Transfers-Out	-	-	-
Non-Appropriated Expenditure Sub-Total:	351.2	240.0	240.0
Non-Lapsing Authority from Prior Years	-	-	-
Administrative Adjustments	-	-	-
Capital Projects (Land, Bldgs, Improv)	-	-	-
Appropriated 27th Pay Roll	-	-	-
Legislative Fund Transfers	-	-	-
IT Project Transfers	-	-	-
Proposed Fund Transfer	-	-	-
Residual Equity Transfer	-	-	-
Transfer Due to Fund Balance Cap	-	-	-
Prior Committed or Obligated Expenditures (no entry for AY)	-	-	-
Non-Appropriated 27th Pay Roll	-	-	-
Non-Appropriated Expenditure Total:	351.2	240.0	240.0
Non-Appropriated FTE	-	-	-

Sources and Uses

Agency: Power Authority

Fund: PA1113 Fund Deposits Fund

Revenues in this fund are a result of the sale of Hoover power and related transmission. These funds are used to pay for the operating expenses of the Power Authority.

Cash Flow Summary

	FY 2025 Actuals	FY 2026 Estimate	FY 2027 Request
Beginning Balance	-	0.0	0.0
Revenue (from Revenue Schedule)	20,498.6	20,727.6	20,727.6
Total Available	20,498.6	20,727.6	20,727.6
Total Appropriated Disbursements	-	-	-
Total Non-Appropriated Disbursements	20,498.6	20,727.6	20,727.6
Balance Forward to Next Year	0.0	0.0	0.0

Appropriated Expenditure

Expenditure Categories

	FY 2025 Actuals	FY 2026 Estimate	FY 2027 Request
Personal Services	-	-	-
Employee Related Expenditures	-	-	-
Professional & Outside Services	-	-	-
Travel In-State	-	-	-
Travel Out-Of-State	-	-	-
Food	-	-	-
Aid To Organizations & Individuals	-	-	-
Other Operating Expenditures	-	-	-
Equipment	-	-	-
Capital Outlay	-	-	-
Capital Equipment	-	-	-
Non-Capital Equipment	-	-	-
Debt Service	-	-	-
Cost Allocation & Indirect Costs	-	-	-
Transfers-Out	-	-	-
Appropriated Expenditure Sub-Total:	-	-	-
Non-Lapsing Authority from Prior Years	-	-	-
Administrative Adjustments	-	-	-
Capital Projects (Land, Bldgs, Improv)	-	-	-
Appropriated 27th Pay Roll	-	-	-
Legislative Fund Transfers	-	-	-
IT Project Transfers	-	-	-
Proposed Fund Transfer	-	-	-
Residual Equity Transfer	-	-	-
Transfer Due to Fund Balance Cap	-	-	-

Sources and Uses

Agency: Power Authority			
Fund: PA1113 Fund Deposits Fund			
Prior Committed or Obligated Expenditures (no entry for AY)	-	-	-
Non-Appropriated 27th Pay Roll	-	-	-
Appropriated Expenditure Total:	-	-	-
Appropriated FTE	-	-	-
Non-Appropriated Expenditure			
Expenditure Categories	FY 2025 Actuals	FY 2026 Estimate	FY 2027 Request
Personal Services	516.0	563.2	563.2
Employee Related Expenditures	160.5	187.8	187.8
Professional & Outside Services	375.2	408.6	408.6
Travel In-State	8.7	11.5	11.5
Travel Out-Of-State	27.1	40.0	40.0
Food	-	-	-
Aid To Organizations & Individuals	-	-	-
Other Operating Expenditures	17,642.3	17,721.1	17,721.1
Equipment	-	-	-
Capital Outlay	-	-	-
Capital Equipment	-	-	-
Non-Capital Equipment	32.7	32.3	32.3
Debt Service	1,725.8	1,724.0	1,724.0
Cost Allocation & Indirect Costs	-	-	-
Transfers-Out	10.4	39.1	39.1
Non-Appropriated Expenditure Sub-Total:	20,498.6	20,727.6	20,727.6
Non-Lapsing Authority from Prior Years	-	-	-
Administrative Adjustments	-	-	-
Capital Projects (Land, Bldgs, Improv)	-	-	-
Appropriated 27th Pay Roll	-	-	-
Legislative Fund Transfers	-	-	-
IT Project Transfers	-	-	-
Proposed Fund Transfer	-	-	-
Residual Equity Transfer	-	-	-
Transfer Due to Fund Balance Cap	-	-	-
Prior Committed or Obligated Expenditures (no entry for AY)	-	-	-
Non-Appropriated 27th Pay Roll	-	-	-
Non-Appropriated Expenditure Total:	20,498.6	20,727.6	20,727.6
Non-Appropriated FTE	9.0	9.0	9.0

Sources and Uses

Agency:	Power Authority
----------------	------------------------

Fund:	PA1114 APA - General Fund
--------------	----------------------------------

Revenues in this fund are received from the sale of supplemental energy and capacity to customers. This fund is used to purchase supplemental energy that is then sold to customers and used for Authority expenditures.

Cash Flow Summary	FY 2025 Actuals	FY 2026 Estimate	FY 2027 Request
Beginning Balance	-	(0.0)	(0.0)
Revenue (from Revenue Schedule)	390.1	315.3	315.3
Total Available	390.1	315.3	315.3
Total Appropriated Disbursements	-	-	-
Total Non-Appropriated Disbursements	390.1	315.3	315.3
Balance Forward to Next Year	(0.0)	(0.0)	(0.0)

Appropriated Expenditure	FY 2025 Actuals	FY 2026 Estimate	FY 2027 Request
Expenditure Categories			
Personal Services	-	-	-
Employee Related Expenditures	-	-	-
Professional & Outside Services	-	-	-
Travel In-State	-	-	-
Travel Out-Of-State	-	-	-
Food	-	-	-
Aid To Organizations & Individuals	-	-	-
Other Operating Expenditures	-	-	-
Equipment	-	-	-
Capital Outlay	-	-	-
Capital Equipment	-	-	-
Non-Capital Equipment	-	-	-
Debt Service	-	-	-
Cost Allocation & Indirect Costs	-	-	-
Transfers-Out	-	-	-
Appropriated Expenditure Sub-Total:	-	-	-
Non-Lapsing Authority from Prior Years	-	-	-
Administrative Adjustments	-	-	-
Capital Projects (Land, Bldgs, Improv)	-	-	-
Appropriated 27th Pay Roll	-	-	-
Legislative Fund Transfers	-	-	-
IT Project Transfers	-	-	-
Proposed Fund Transfer	-	-	-
Residual Equity Transfer	-	-	-
Transfer Due to Fund Balance Cap	-	-	-

Sources and Uses

Agency: Power Authority			
Fund: PA1114 APA - General Fund			
Prior Committed or Obligated Expenditures (no entry for AY)	-	-	-
Non-Appropriated 27th Pay Roll	-	-	-
Appropriated Expenditure Total:	-	-	-
Appropriated FTE	-	-	-
Non-Appropriated Expenditure			
Expenditure Categories	FY 2025 Actuals	FY 2026 Estimate	FY 2027 Request
Personal Services	-	-	-
Employee Related Expenditures	-	-	-
Professional & Outside Services	-	-	-
Travel In-State	-	-	-
Travel Out-Of-State	-	-	-
Food	-	-	-
Aid To Organizations & Individuals	-	-	-
Other Operating Expenditures	287.4	5.3	5.3
Equipment	-	-	-
Capital Outlay	102.7	310.0	310.0
Capital Equipment	-	-	-
Non-Capital Equipment	-	-	-
Debt Service	-	-	-
Cost Allocation & Indirect Costs	-	-	-
Transfers-Out	-	-	-
Non-Appropriated Expenditure Sub-Total:	390.1	315.3	315.3
Non-Lapsing Authority from Prior Years	-	-	-
Administrative Adjustments	-	-	-
Capital Projects (Land, Bldgs, Improv)	-	-	-
Appropriated 27th Pay Roll	-	-	-
Legislative Fund Transfers	-	-	-
IT Project Transfers	-	-	-
Proposed Fund Transfer	-	-	-
Residual Equity Transfer	-	-	-
Transfer Due to Fund Balance Cap	-	-	-
Prior Committed or Obligated Expenditures (no entry for AY)	-	-	-
Non-Appropriated 27th Pay Roll	-	-	-
Non-Appropriated Expenditure Total:	390.1	315.3	315.3
Non-Appropriated FTE	-	-	-

Summary of Expenditure and Budget Request for All Funds

Agency:	Power Authority
----------------	------------------------

Appropriated Funds		FY 2025 Actuals	FY 2026 Expenditure Plan	FY 2027 Funding Issue	FY 2027 Total Request
Program:					
PAA-1-0	Arizona Power Authority	-	-	-	-
Appropriated Funds Total:		-	-	-	-
Expenditure Categories					
	FTE	-	-	-	-
	Personal Services	-	-	-	-
	Employee Related Expenditures	-	-	-	-
	Subtotal Personal Services and ERE	-	-	-	-
	Professional & Outside Services	-	-	-	-
	Travel In-State	-	-	-	-
	Travel Out-Of-State	-	-	-	-
	Other Operating Expenditures	-	-	-	-
	Capital Outlay	-	-	-	-
	Non-Capital Equipment	-	-	-	-
	Debt Service	-	-	-	-
	Transfers-Out	-	-	-	-
Expenditure Categories Total:		-	-	-	-

Summary of Expenditure and Budget Request for All Funds

Agency: Power Authority

Non-Appropriated		FY 2025 Actuals	FY 2026 Expenditure Plan	FY 2027 Funding Issue	FY 2027 Total Request
Program:					
PAA-1-0	Arizona Power Authority	21,239.9	21,282.9	-	21,282.9
Non-Appropriated Total:		21,239.9	21,282.9	-	21,282.9
Expenditure Categories					
FTE		9.0	9.0	-	9.0
Personal Services		516.0	563.2	-	563.2
Employee Related Expenditures		160.5	187.8	-	187.8
Subtotal Personal Services and ERE		676.5	751.0	-	751.0
Professional & Outside Services		375.2	408.6	-	408.6
Travel In-State		8.7	11.5	-	11.5
Travel Out-Of-State		27.1	40.0	-	40.0
Other Operating Expenditures		18,280.8	17,966.4	-	17,966.4
Capital Outlay		102.7	310.0	-	310.0
Non-Capital Equipment		32.7	32.3	-	32.3
Debt Service		1,725.8	1,724.0	-	1,724.0
Transfers-Out		10.4	39.1	-	39.1
Expenditure Categories Total:		21,239.9	21,282.9	-	21,282.9
Power Authority Total for All Funds:		21,239.9	21,282.9	-	21,282.9

Appropriated and Non-Appropriated		FY 2025 Actuals	FY 2026 Expenditure Plan	FY 2026 Funding Issue	FY 2027 Total Request
PAA-1-0	Arizona Power Authority	21,239.9	21,282.9	-	21,282.9
Power Authority Total for All Funds:		21,239.9	21,282.9	-	21,282.9

Summary of Expenditure and Budget Request for Selected Funds

Agency:	Power Authority
Fund:	PA1112 Interest Income Fund (Non-Appropriated)

		FY 2025 Actuals	FY 2026 Expenditure Plan	FY 2027 Funding Issue	FY 2027 Total Request
Program:					
PAA-1-0	Arizona Power Authority	351.2	240.0	-	240.0
	Interest Income Fund (Non-Appropriated)	351.2	240.0	-	240.0
	Summary Total:				
	Expenditure Categories				
	FTE	-	-	-	-
	Personal Services	-	-	-	-
	Employee Related Expenditures	-	-	-	-
	Subtotal Personal Services and ERE	-	-	-	-
	Professional & Outside Services	-	-	-	-
	Travel In-State	-	-	-	-
	Travel Out-Of-State	-	-	-	-
	Other Operating Expenditures	351.2	240.0	-	240.0
	Capital Outlay	-	-	-	-
	Non-Capital Equipment	-	-	-	-
	Debt Service	-	-	-	-
	Transfers-Out	-	-	-	-
	Expenditure Categories Total:	351.2	240.0	-	240.0

Summary of Expenditure and Budget Request for Selected Funds

Agency:	Power Authority
Fund:	PA1113 Fund Deposits Fund (Non-Appropriated)

		FY 2025 Actuals	FY 2026 Expenditure Plan	FY 2027 Funding Issue	FY 2027 Total Request
Program:					
PAA-1-0	Arizona Power Authority	20,498.6	20,727.6	-	20,727.6
	Fund Deposits Fund (Non-Appropriated)	20,498.6	20,727.6	-	20,727.6
	Summary Total:				
	Expenditure Categories				
	FTE	9.0	9.0	-	9.0
	Personal Services	516.0	563.2	-	563.2
	Employee Related Expenditures	160.5	187.8	-	187.8
	Subtotal Personal Services and ERE	676.5	751.0	-	751.0
	Professional & Outside Services	375.2	408.6	-	408.6
	Travel In-State	8.7	11.5	-	11.5
	Travel Out-Of-State	27.1	40.0	-	40.0
	Other Operating Expenditures	17,642.3	17,721.1	-	17,721.1
	Capital Outlay	-	-	-	-
	Non-Capital Equipment	32.7	32.3	-	32.3
	Debt Service	1,725.8	1,724.0	-	1,724.0
	Transfers-Out	10.4	39.1	-	39.1
	Expenditure Categories Total:	20,498.6	20,727.6	-	20,727.6

Summary of Expenditure and Budget Request for Selected Funds

Agency:	Power Authority
Fund:	PA1114 APA - General Fund (Appropriated)

	FY 2025 Actuals	FY 2026 Expenditure Plan	FY 2027 Funding Issue	FY 2027 Total Request
Program:				
PAA-1-0 Arizona Power Authority	-	-	-	-
APA - General Fund (Appropriated) Summary Total:	-	-	-	-
Expenditure Categories				
FTE	-	-	-	-
Personal Services	-	-	-	-
Employee Related Expenditures	-	-	-	-
Subtotal Personal Services and ERE	-	-	-	-
Professional & Outside Services	-	-	-	-
Travel In-State	-	-	-	-
Travel Out-Of-State	-	-	-	-
Other Operating Expenditures	-	-	-	-
Capital Outlay	-	-	-	-
Non-Capital Equipment	-	-	-	-
Debt Service	-	-	-	-
Transfers-Out	-	-	-	-
Expenditure Categories Total:	-	-	-	-

Summary of Expenditure and Budget Request for Selected Funds

Agency:	Power Authority
Fund:	PA1114 APA - General Fund (Non-Appropriated)

		FY 2025 Actuals	FY 2026 Expenditure Plan	FY 2027 Funding Issue	FY 2027 Total Request
Program:					
PAA-1-0	Arizona Power Authority	390.1	315.3	-	315.3
	APA - General Fund (Non-Appropriated)	390.1	315.3	-	315.3
	Summary Total:				
	Expenditure Categories				
	FTE	-	-	-	-
	Personal Services	-	-	-	-
	Employee Related Expenditures	-	-	-	-
	Subtotal Personal Services and ERE	-	-	-	-
	Professional & Outside Services	-	-	-	-
	Travel In-State	-	-	-	-
	Travel Out-Of-State	-	-	-	-
	Other Operating Expenditures	287.4	5.3	-	5.3
	Capital Outlay	102.7	310.0	-	310.0
	Non-Capital Equipment	-	-	-	-
	Debt Service	-	-	-	-
	Transfers-Out	-	-	-	-
	Expenditure Categories Total:	390.1	315.3	-	315.3