

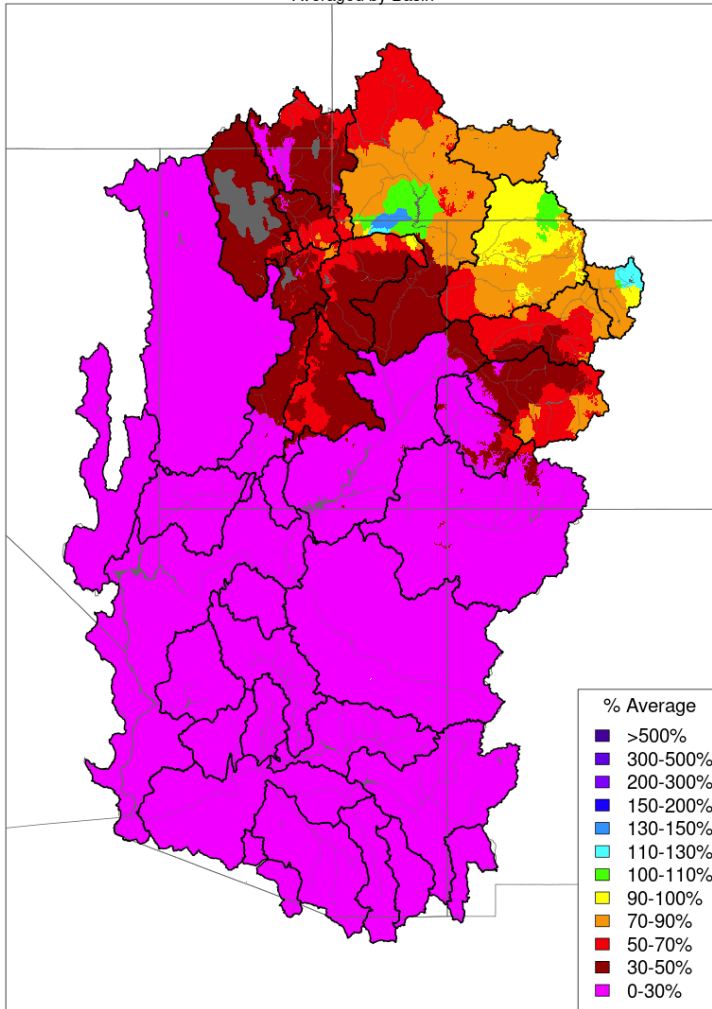
# Operations Report

FEBRUARY 18, 2025

## MONTHLY PRECIPITATION

### Monthly Precipitation - January 2025

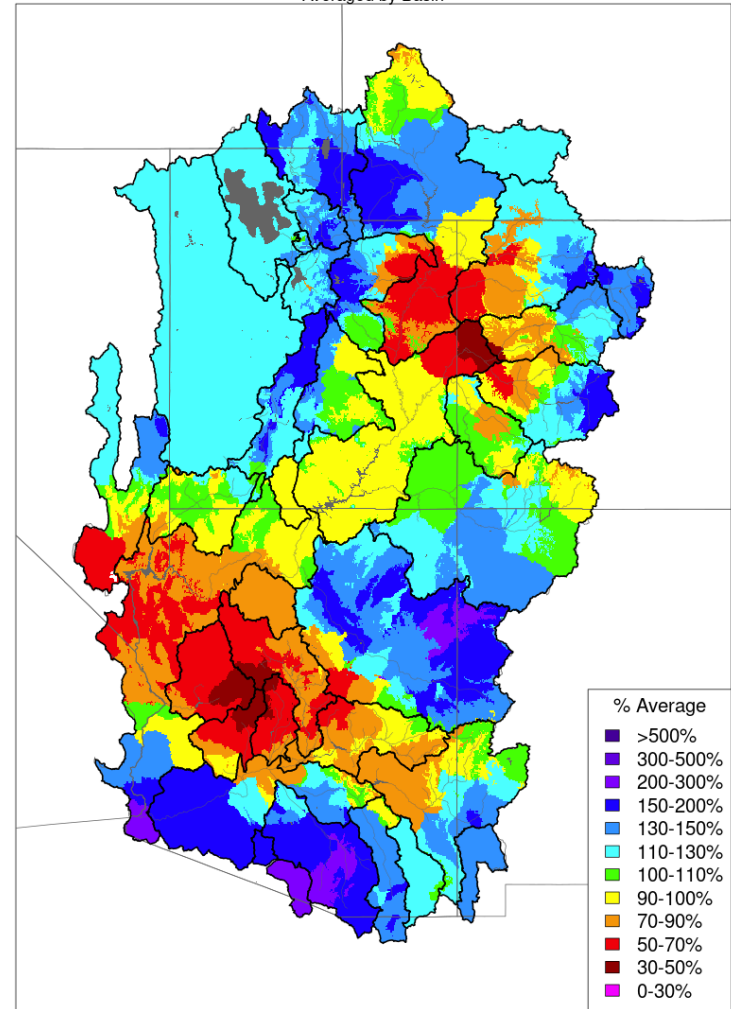
Averaged by Basin



Prepared by NOAA, Colorado Basin River Forecast Center  
Salt Lake City, Utah, [www.cbafc.noaa.gov](http://www.cbafc.noaa.gov)

### Monthly Precipitation - January 2024

Averaged by Basin

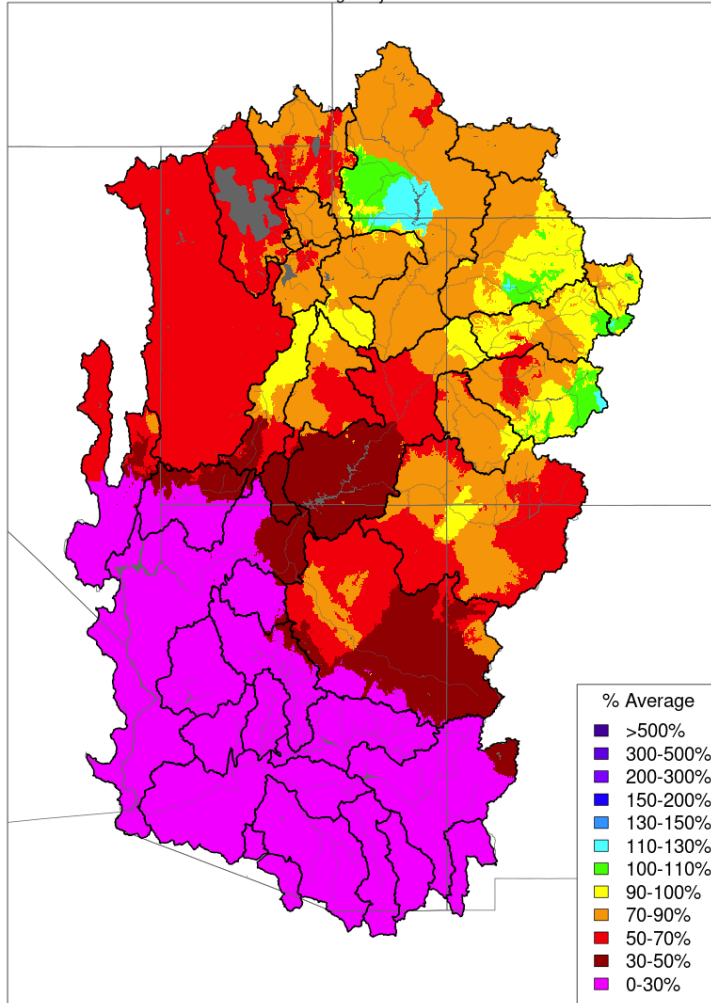


Prepared by NOAA, Colorado Basin River Forecast Center  
Salt Lake City, Utah, [www.cbafc.noaa.gov](http://www.cbafc.noaa.gov)

## WATER YEAR PRECIPITATION

### Water Year Precipitation, October 2024 - January 2025

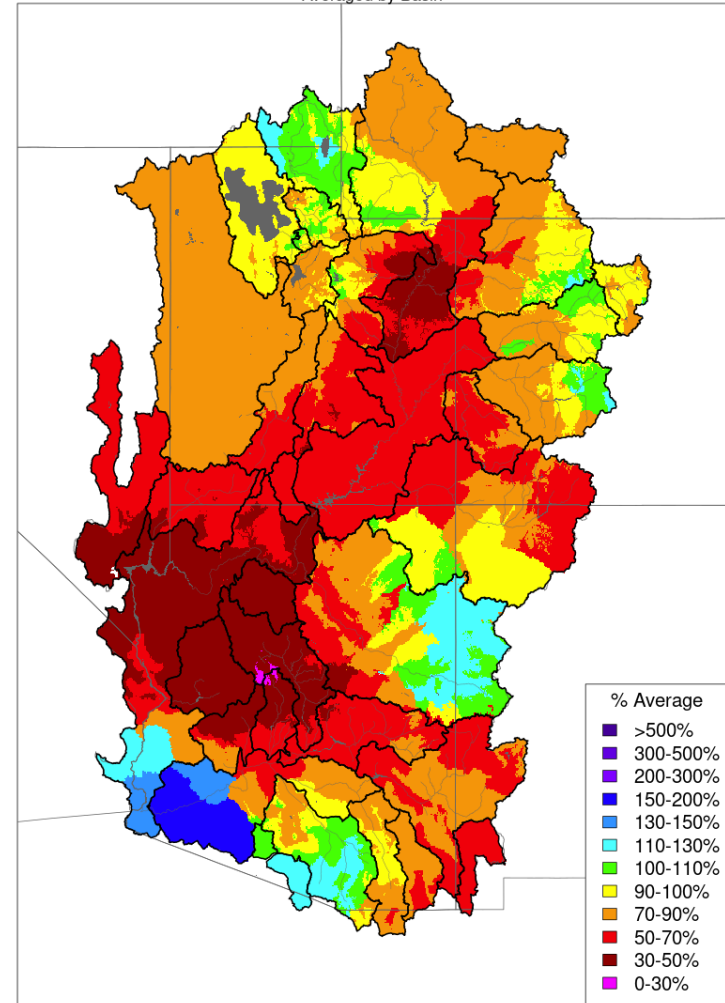
Averaged by Basin



Prepared by NOAA, Colorado Basin River Forecast Center  
Salt Lake City, Utah, [www.cbrfc.noaa.gov](http://www.cbrfc.noaa.gov)

### Water Year Precipitation, October 2023 - January 2024

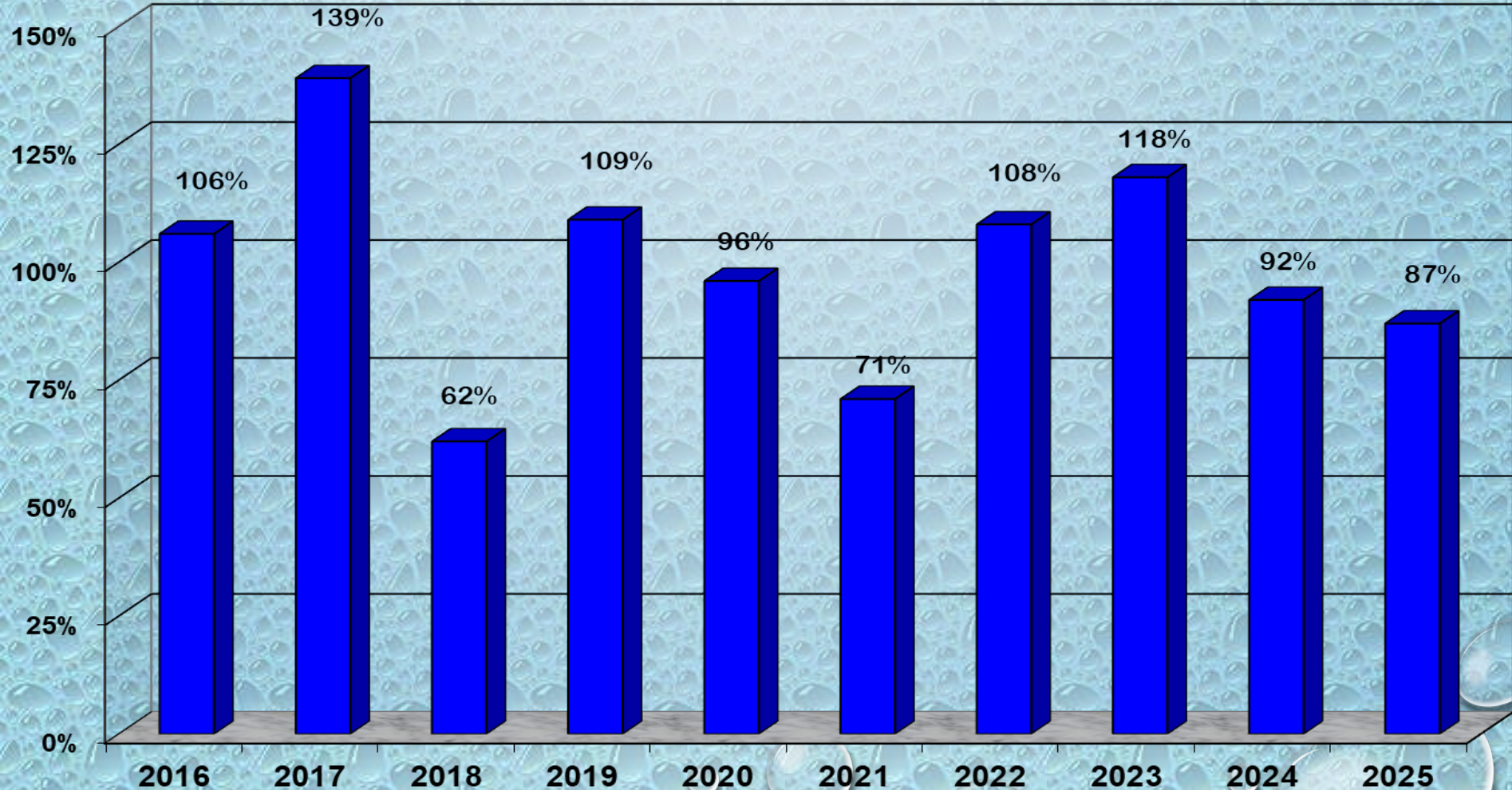
Averaged by Basin



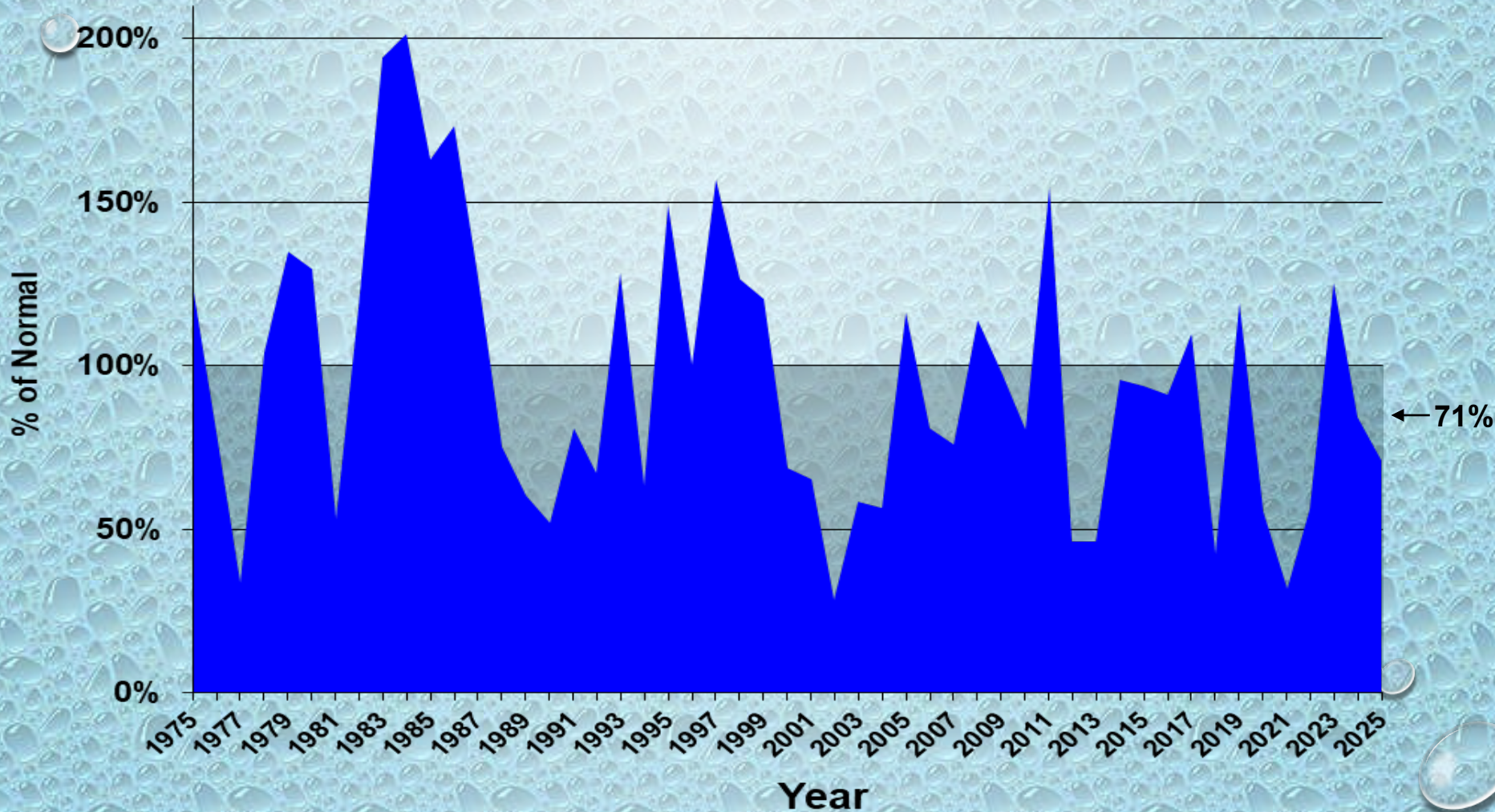
Prepared by NOAA, Colorado Basin River Forecast Center  
Salt Lake City, Utah, [www.cbrfc.noaa.gov](http://www.cbrfc.noaa.gov)

# UPPER COLORADO RIVER SYSTEM

Water Year Precipitation to Date  
(Average based on 1991 - 2020)



# LAKE POWELL ANNUAL UNREGULATED INFLOW



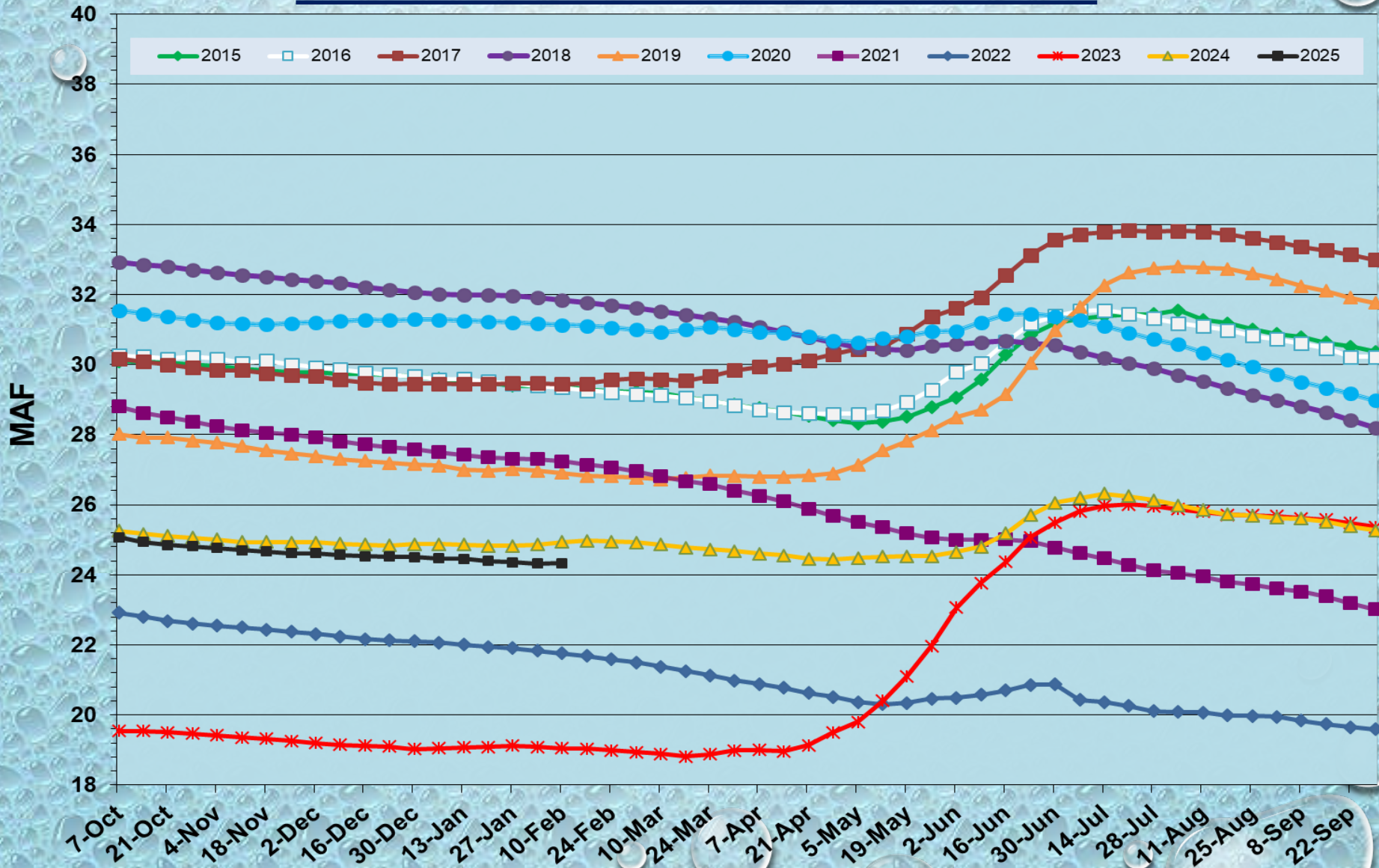
Normal = 9.60 MAF

1991 to 2020

■ % Normal

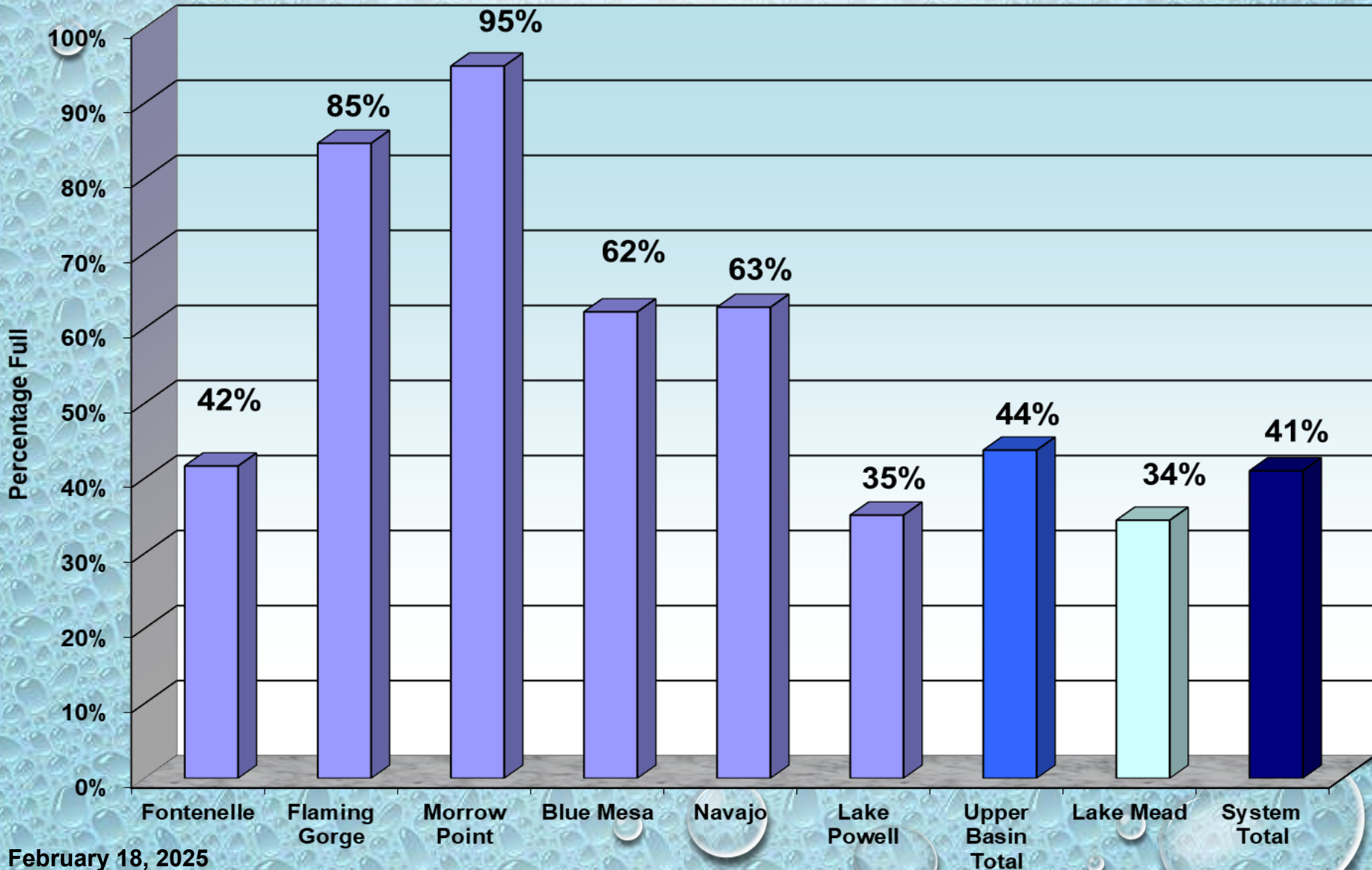
# Arizona Power Authority

## TOTAL SYSTEM CONTENTS



February 18, 2025

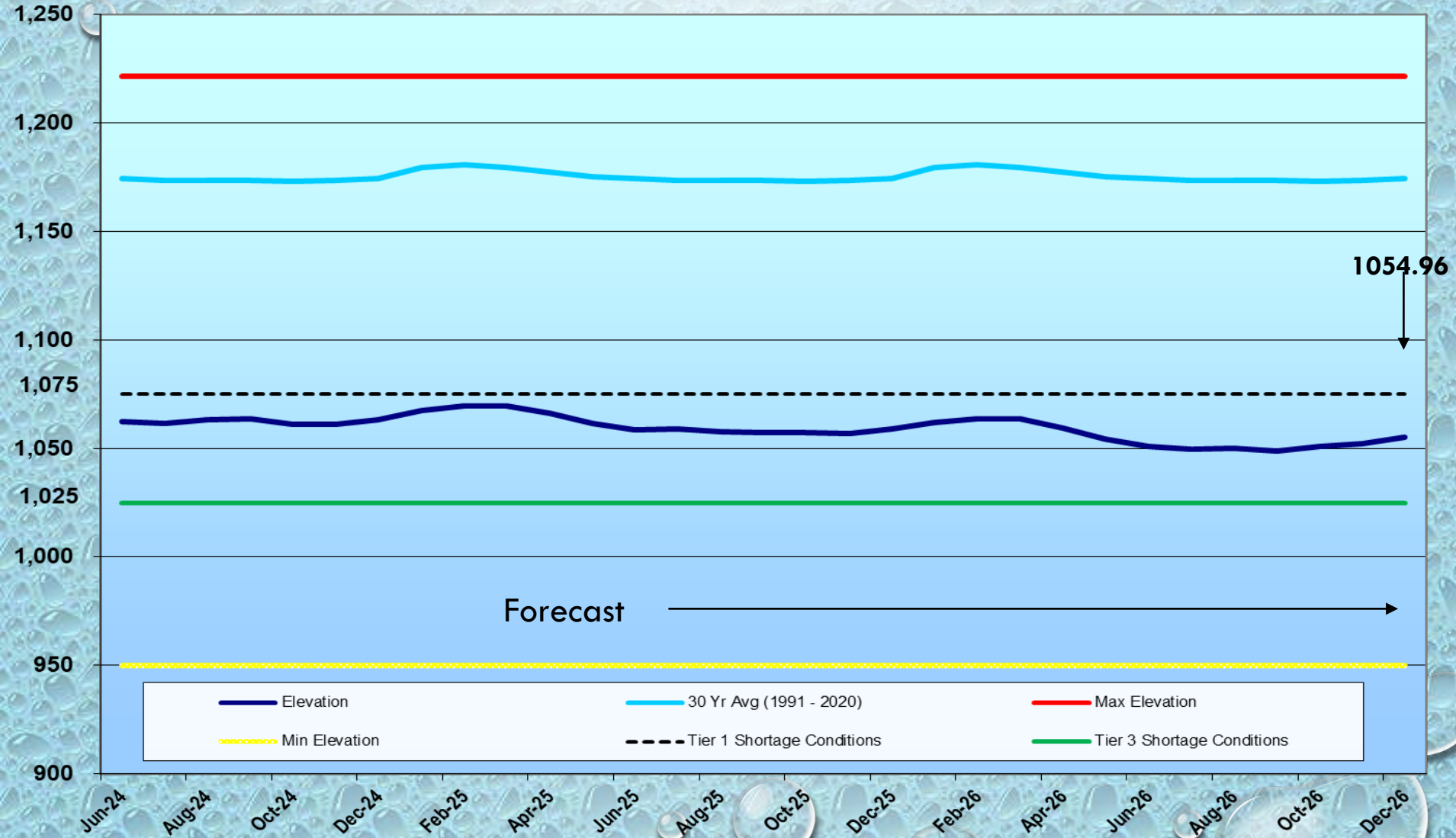
## RESERVOIR AND SYSTEM CAPACITY AS OF 02/10/25



February 18, 2025

# LAKE MEAD ELEVATION

JUNE 2024 THROUGH DECEMBER 2026

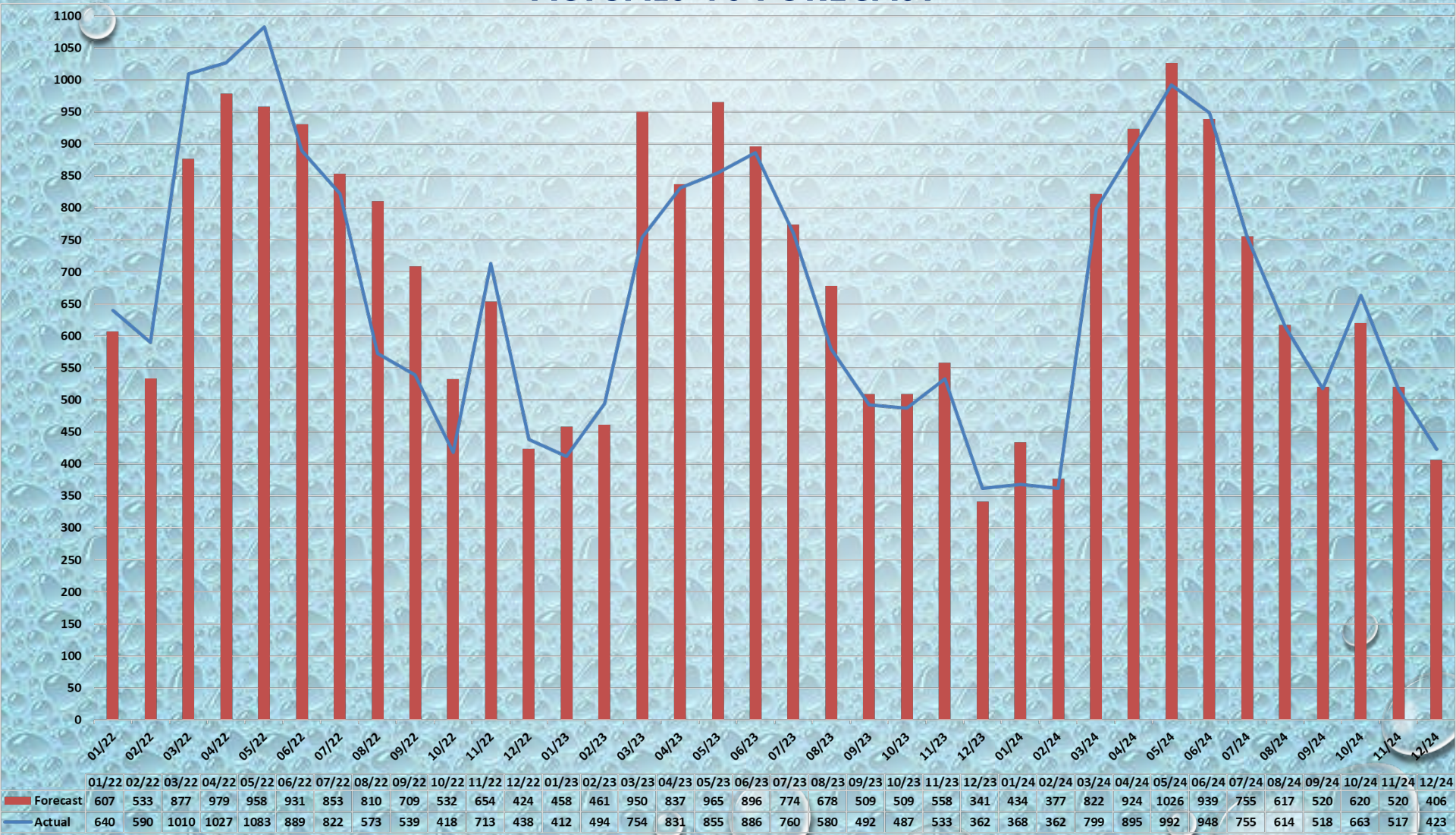


## GLEN RELEASE ACTUALS VS FORECAST



## HOOVER RELEASE

### ACTUALS VS FORECAST



**Questions or Comments?  
Call Sonseeahray Thayer at:  
602-368-4265**

**For a copy of this report, go to the Power Authority website  
at: <http://www.powerauthority.org/>  
and click on downloads.**