

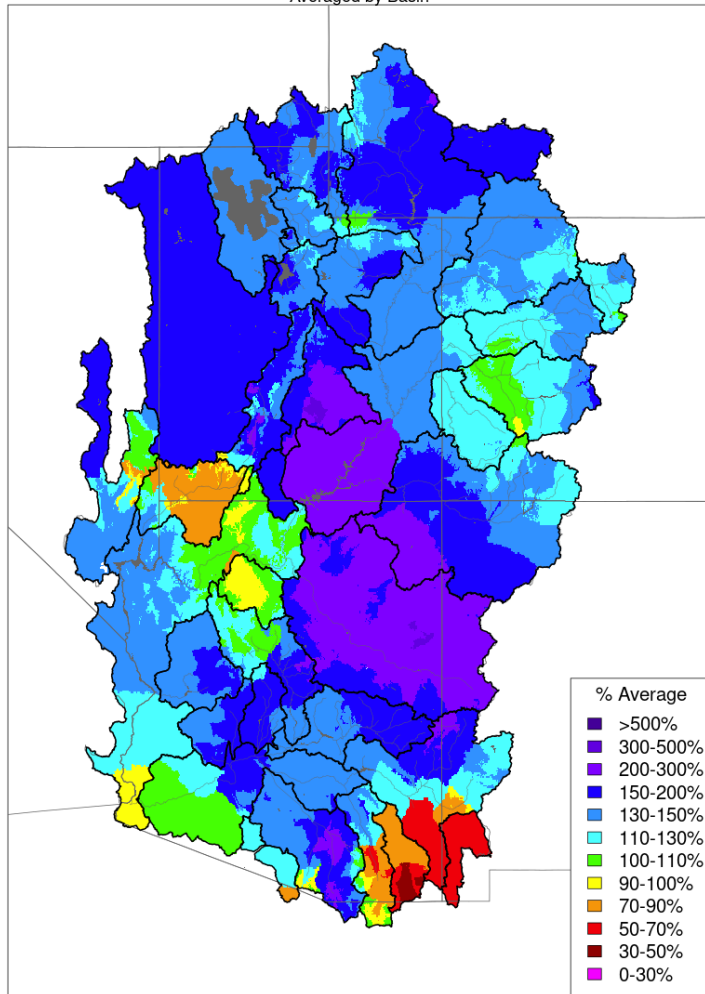


Operations Report

April 16, 2024

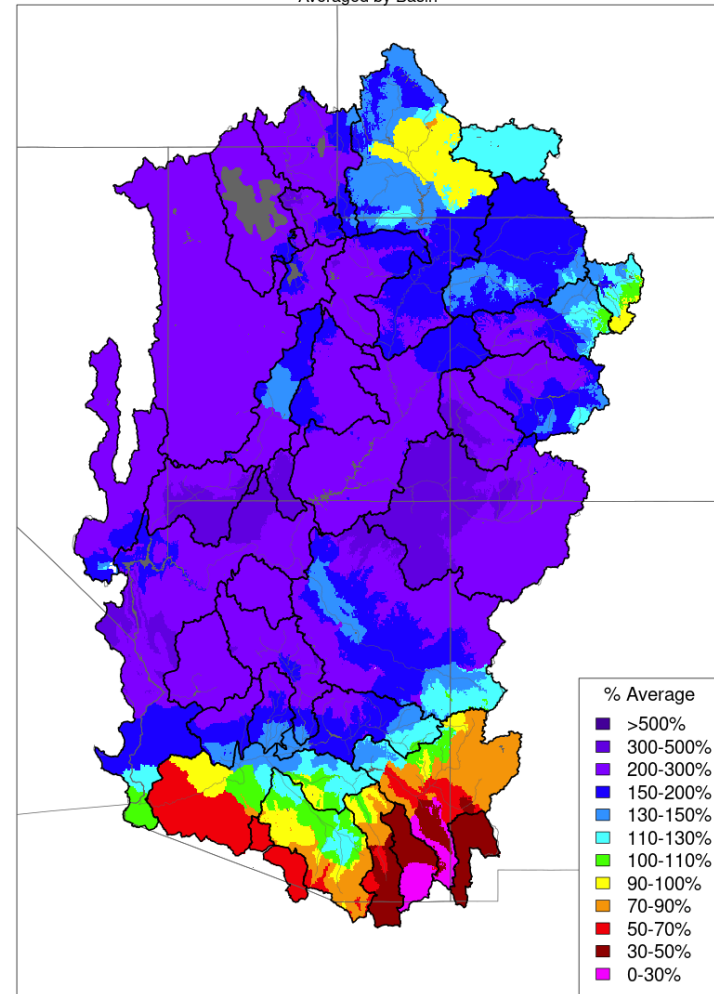
Monthly Precipitation

Monthly Precipitation - March 2024
Averaged by Basin



Prepared by NOAA, Colorado Basin River Forecast Center
Salt Lake City, Utah, www.cbrfc.noaa.gov

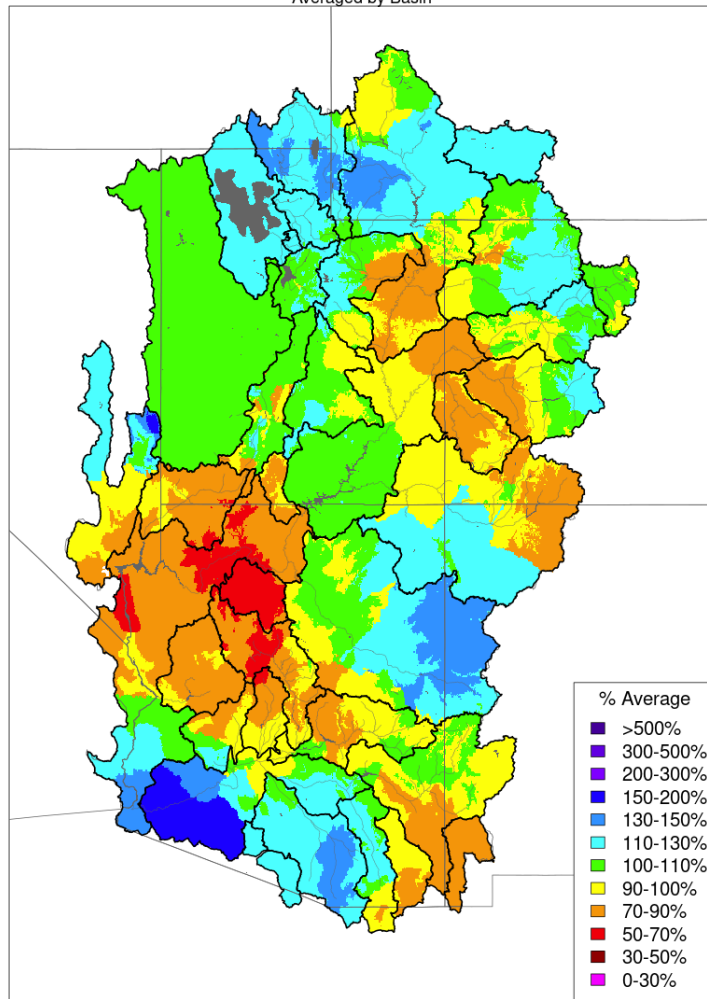
Monthly Precipitation - March 2023
Averaged by Basin



Prepared by NOAA, Colorado Basin River Forecast Center
Salt Lake City, Utah, www.cbrfc.noaa.gov

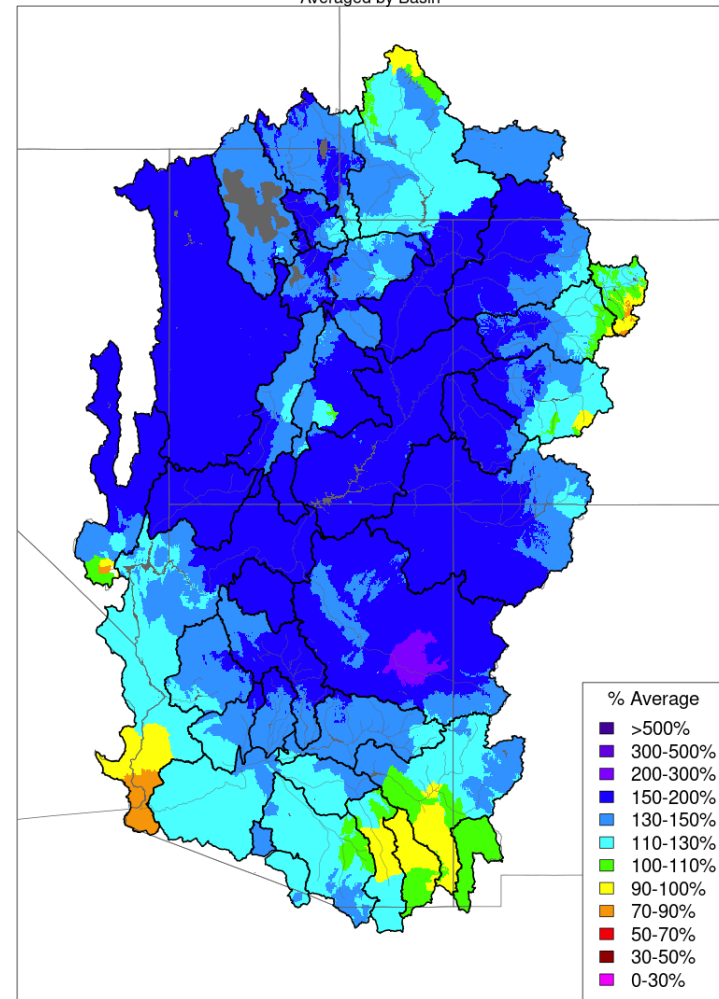
Water Year Precipitation

Water Year Precipitation, October 2023 - March 2024
Averaged by Basin



Prepared by NOAA, Colorado Basin River Forecast Center
Salt Lake City, Utah, www.cbrfc.noaa.gov

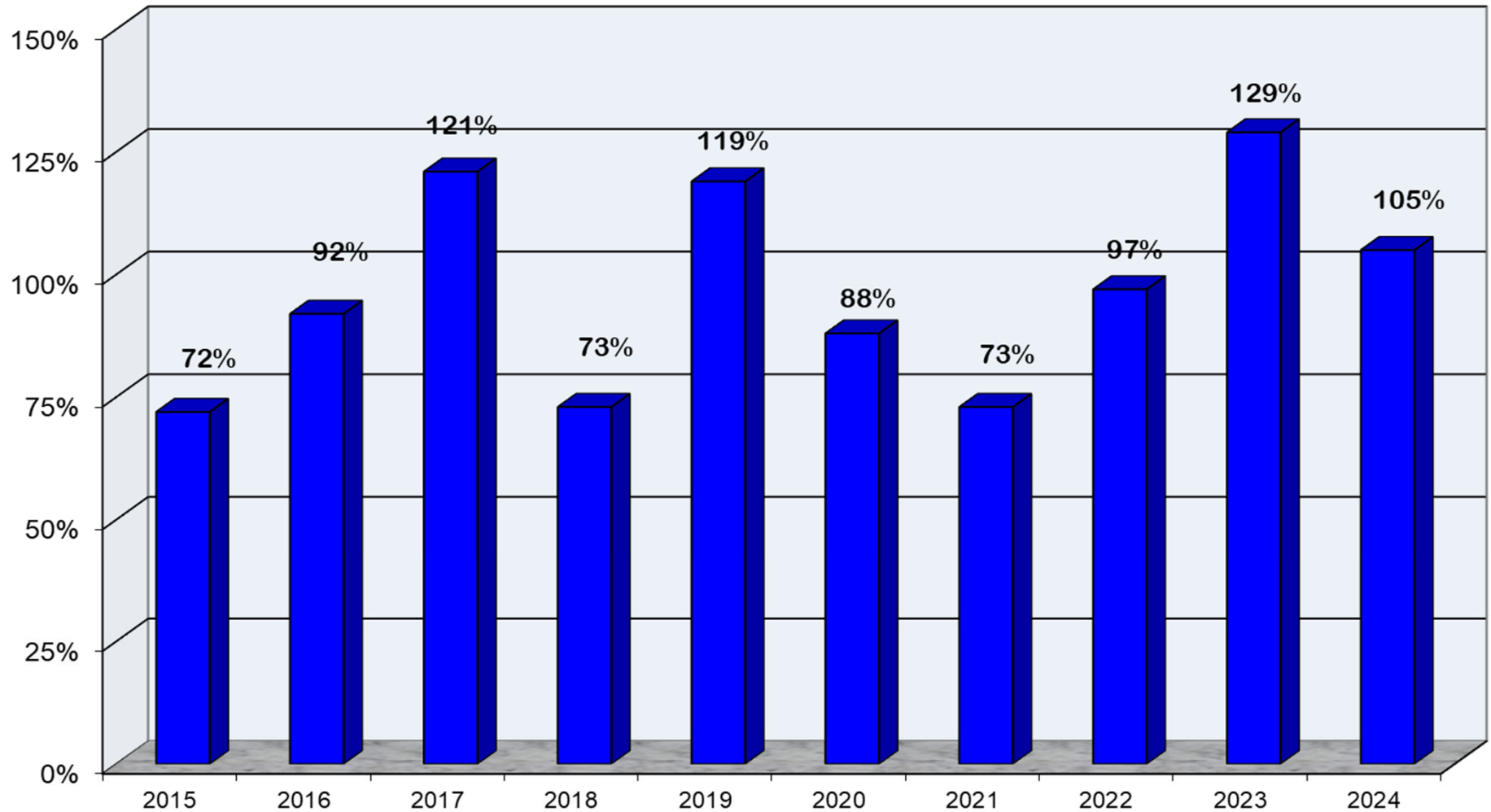
Water Year Precipitation, October 2022 - March 2023
Averaged by Basin



Prepared by NOAA, Colorado Basin River Forecast Center
Salt Lake City, Utah, www.cbrfc.noaa.gov

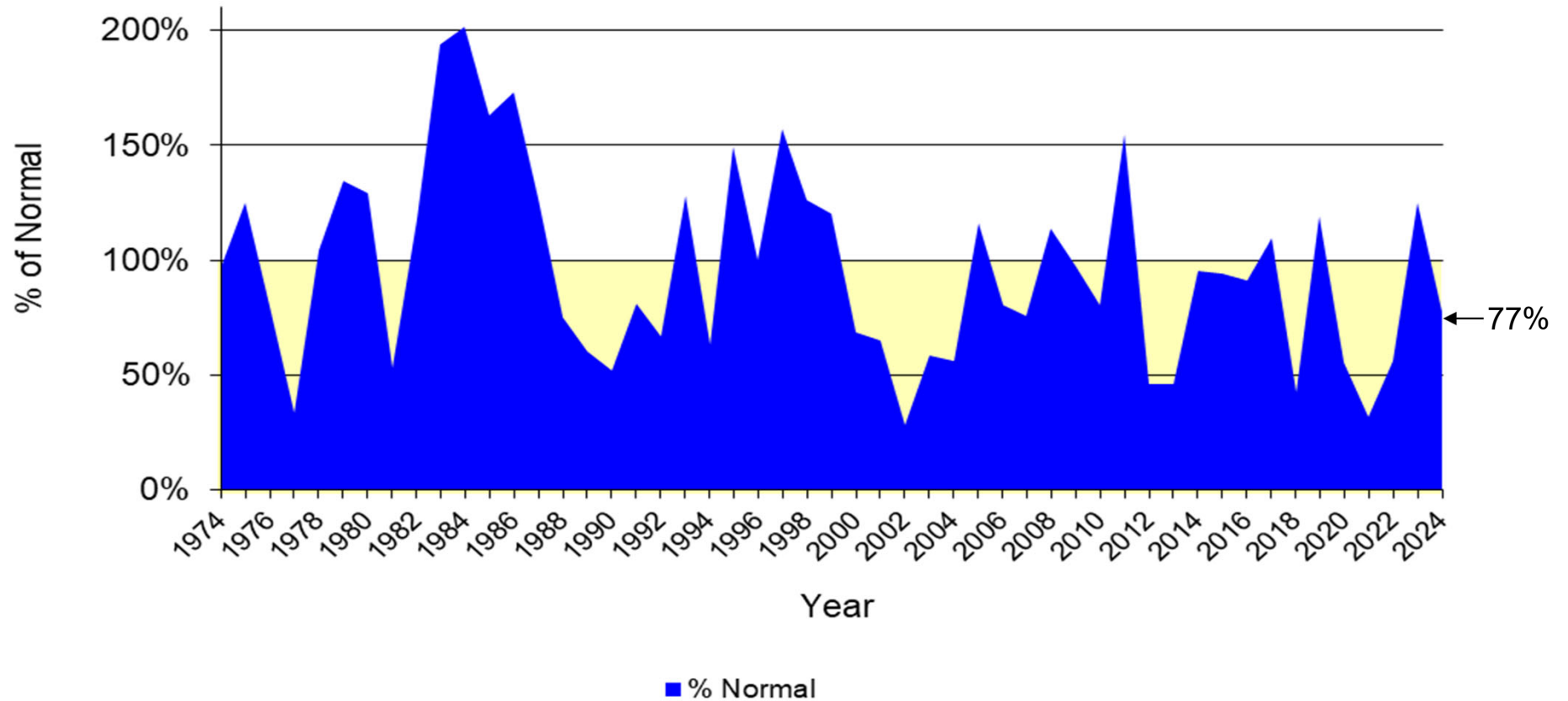
Upper Colorado River System

Water Year Precipitation to Date
(Average based on 1991 - 2020)



April 16, 2024

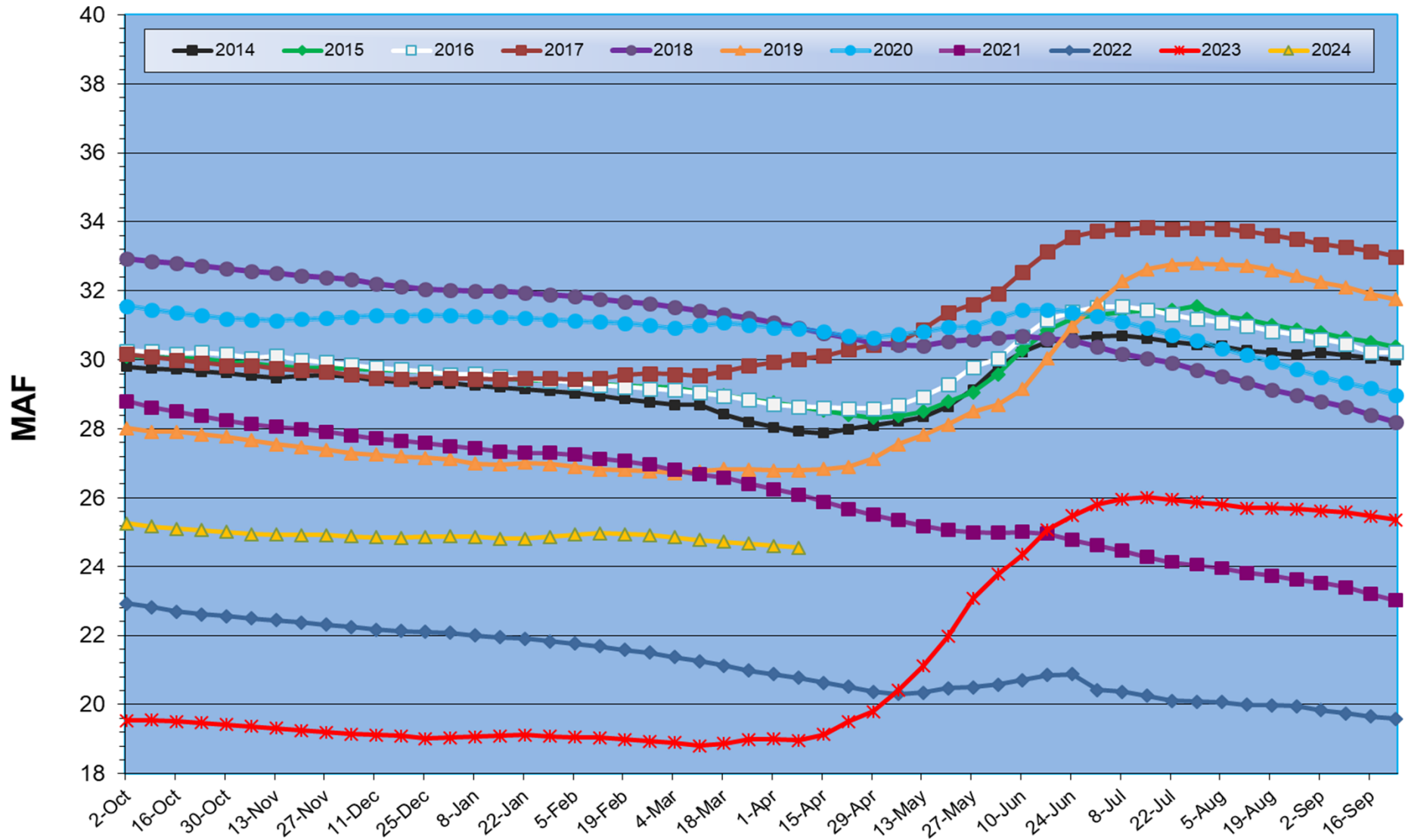
Lake Powell Annual Unregulated Inflow



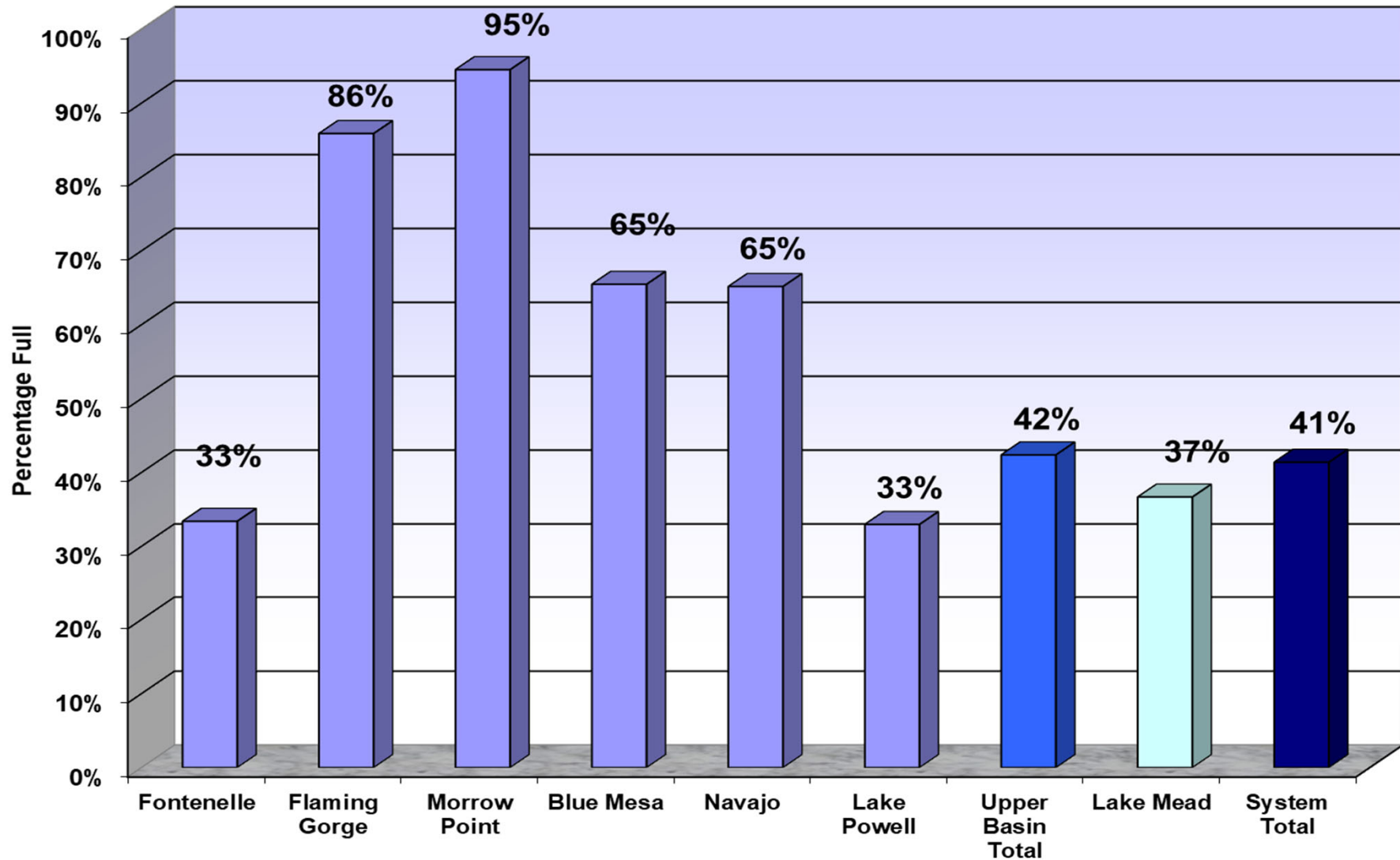
Normal = 10.8575 MAF

1991 to 2020

Total System Contents

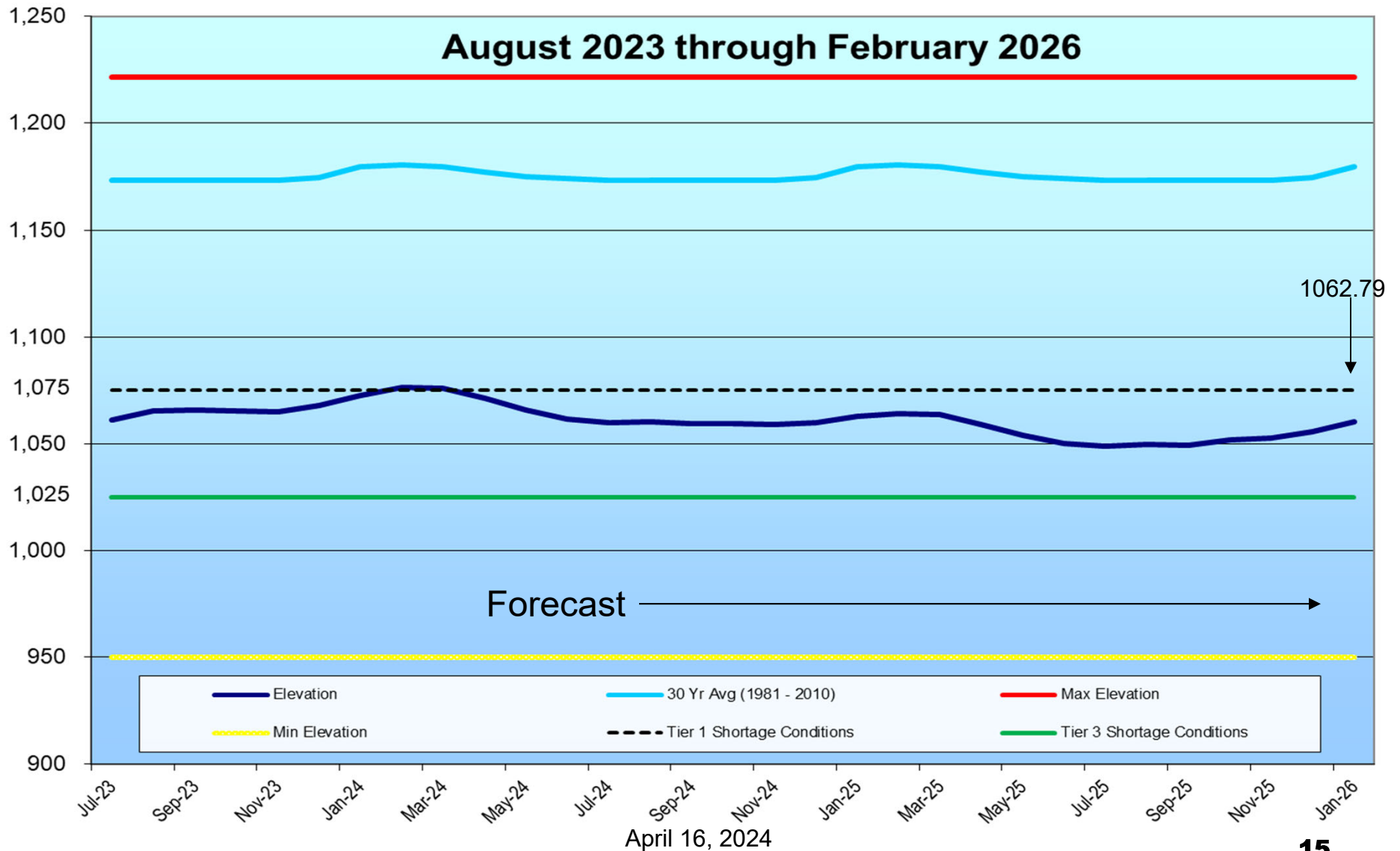


Reservoir and System Capacity as of 04/08/24



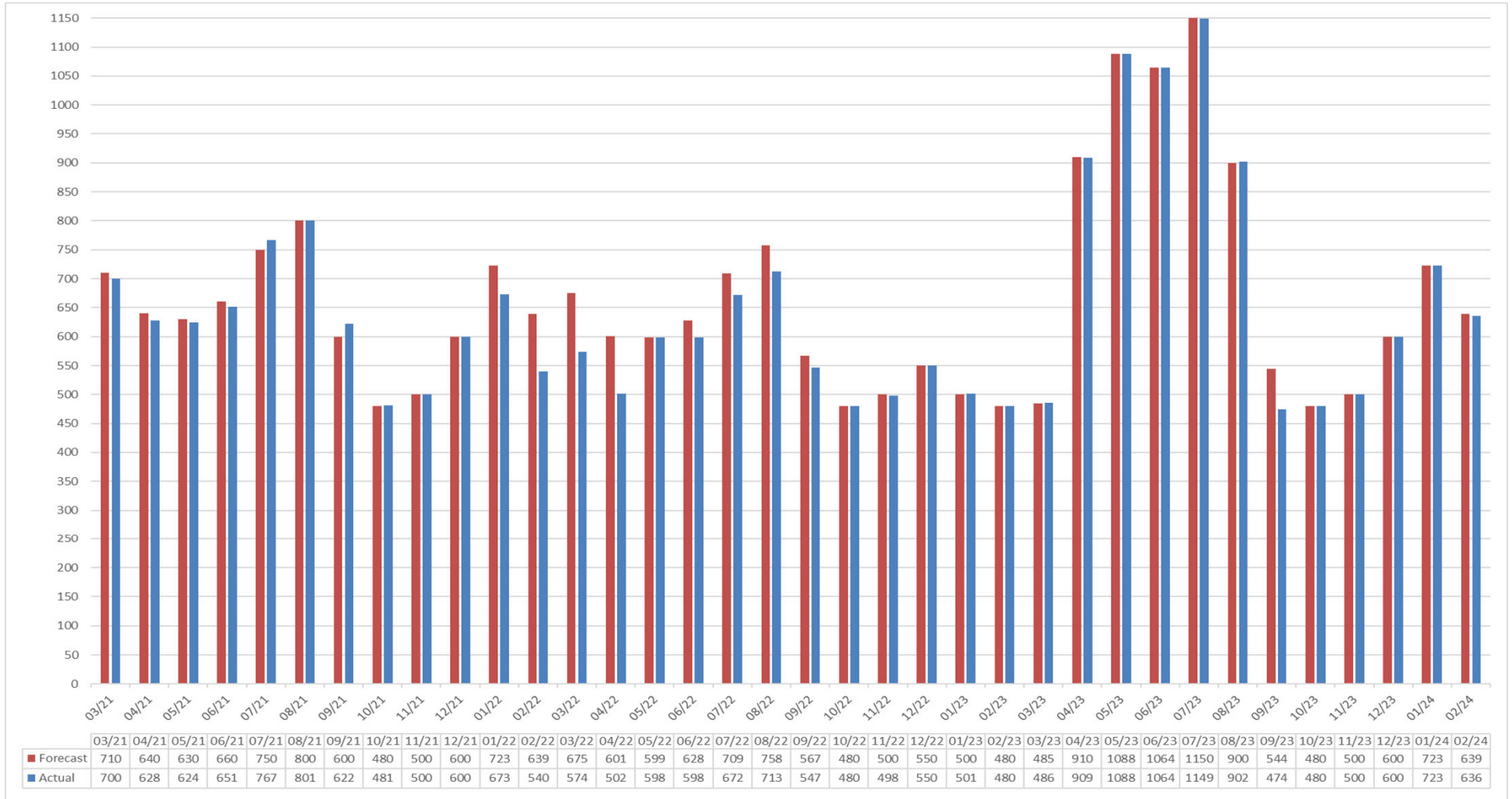
April 16, 2024

Lake Mead Elevation

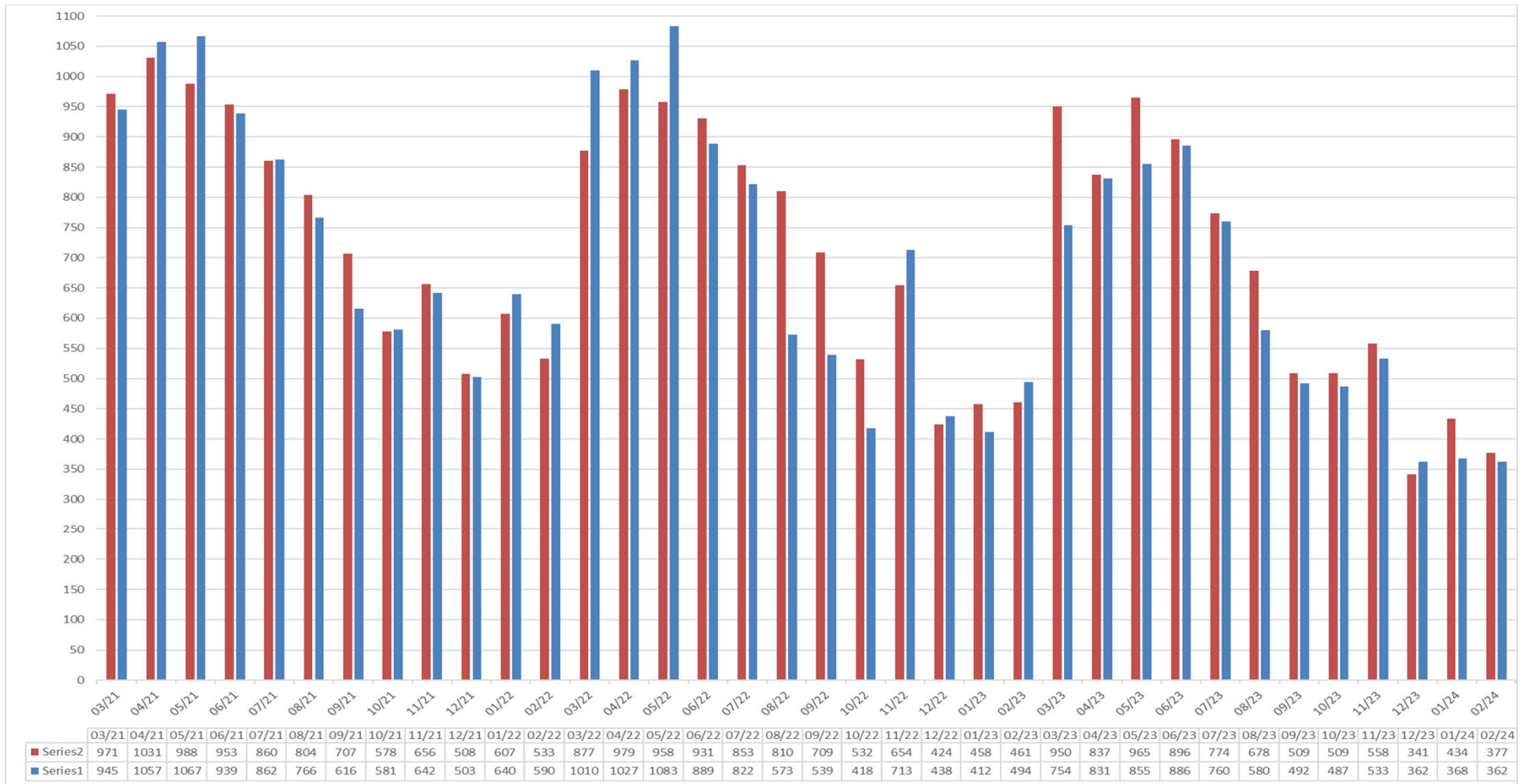


Glen Release

Actuals vs Forecast



Hoover Release Actuals vs Forecast



Questions or Comments?
Call Sonseeahray Thayer at:
602-368-4265

For a copy of this report, go to the Power Authority website
at: <http://www.powerauthority.org/>
and click on downloads.