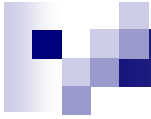


Operations Report

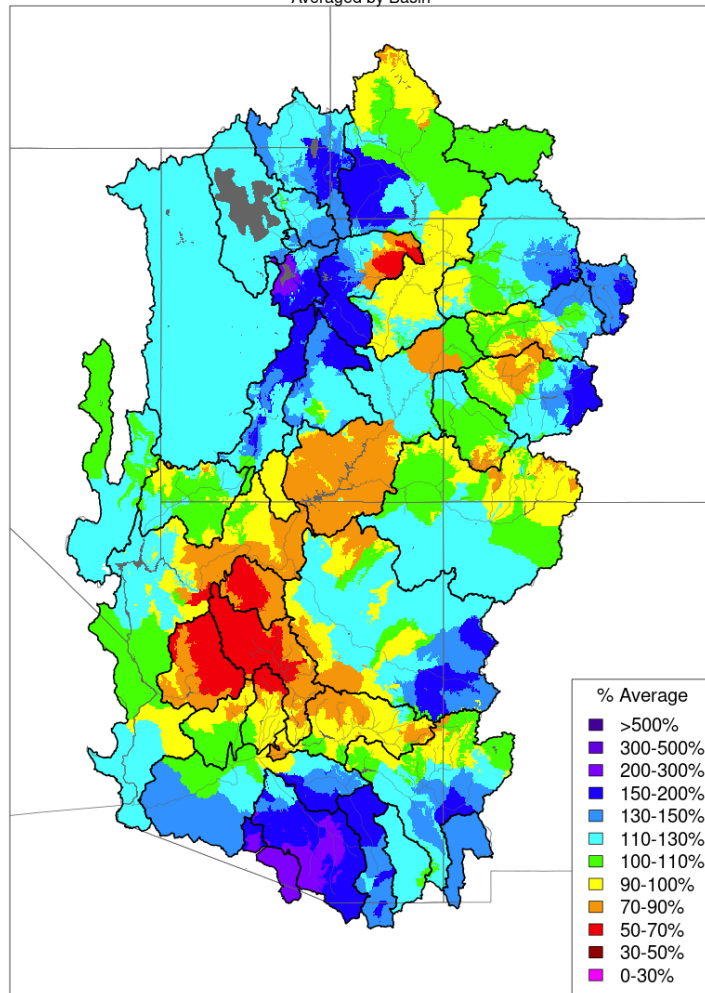
February 13, 2024



Monthly Precipitation

Monthly Precipitation - January 2024

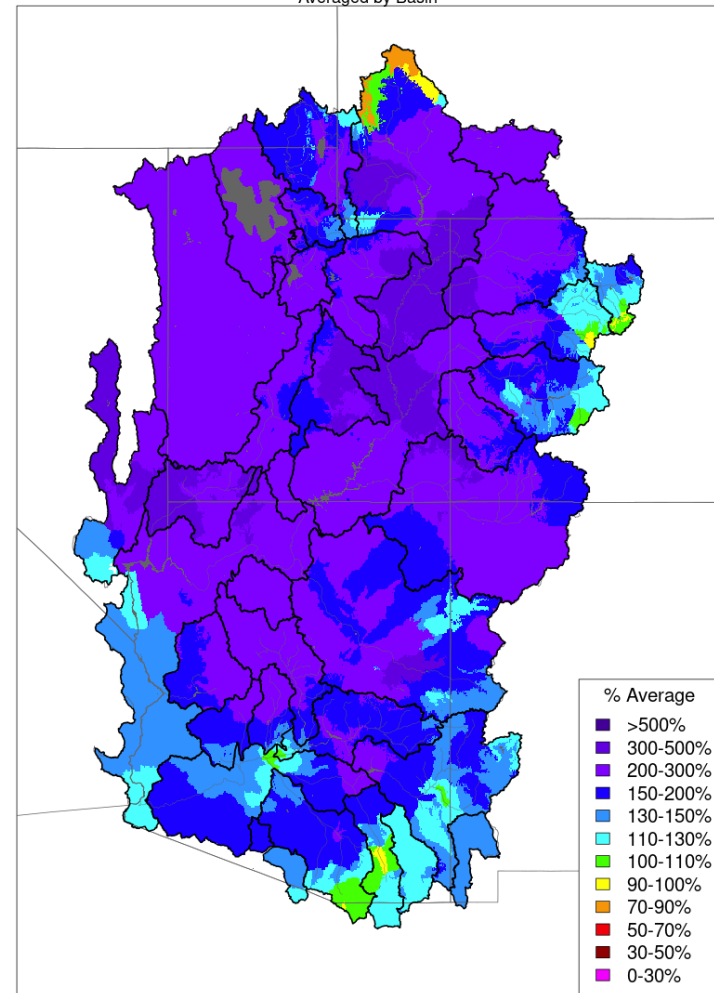
Averaged by Basin



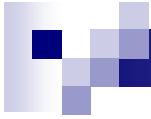
Prepared by NOAA, Colorado Basin River Forecast Center
Salt Lake City, Utah, www.cbrfc.noaa.gov

Monthly Precipitation - January 2023

Averaged by Basin



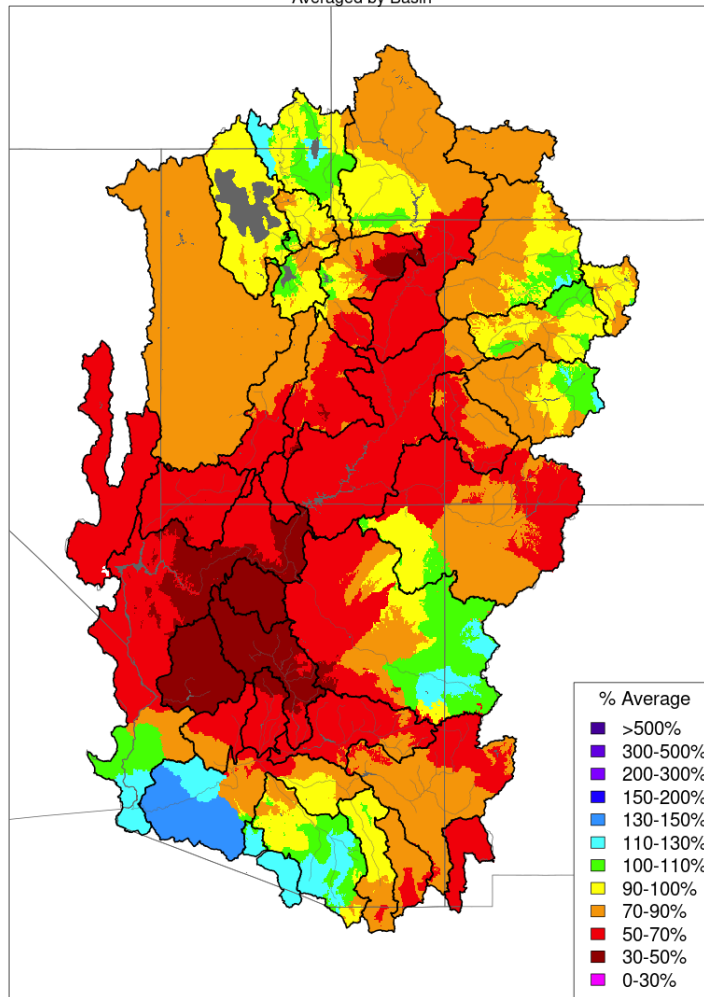
Prepared by NOAA, Colorado Basin River Forecast Center
Salt Lake City, Utah, www.cbrfc.noaa.gov



Water Year Precipitation

Water Year Precipitation, October 2023 - January 2024

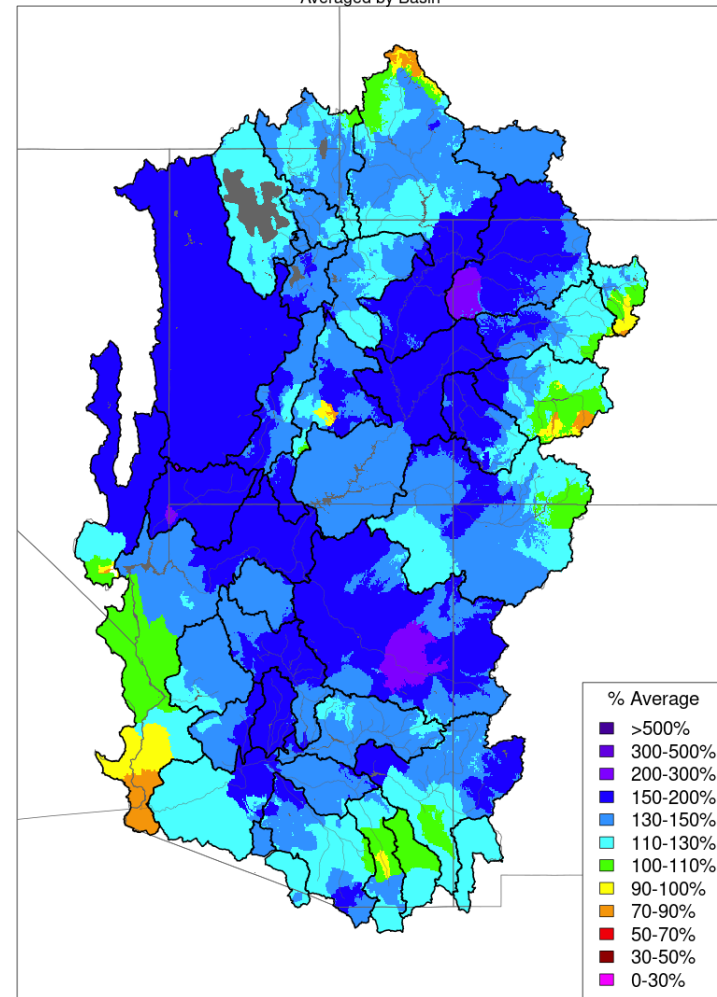
Averaged by Basin



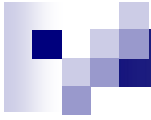
Prepared by NOAA, Colorado Basin River Forecast Center
Salt Lake City, Utah, www.cbrfc.noaa.gov

Water Year Precipitation, October 2022 - January 2023

Averaged by Basin

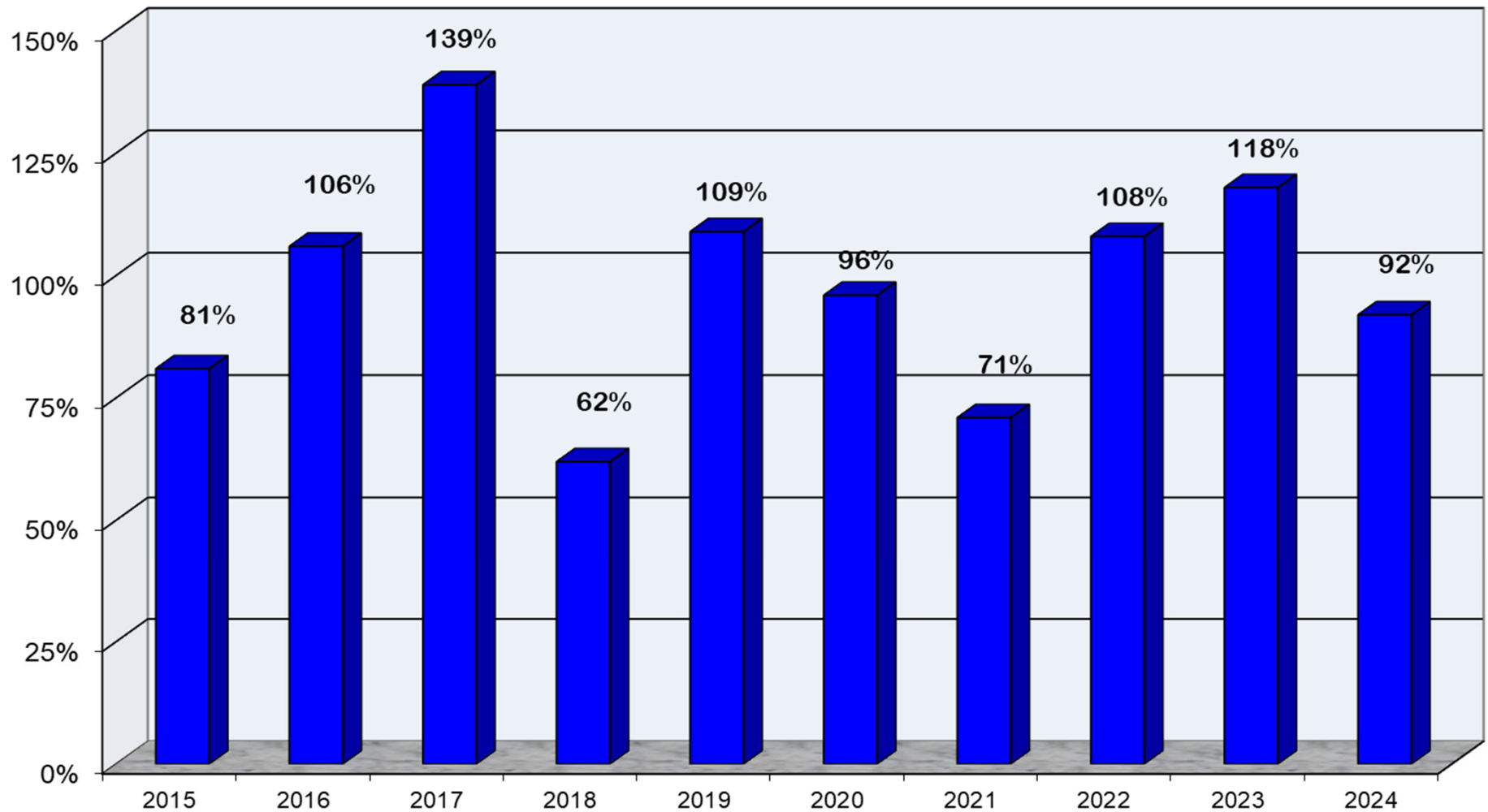


Prepared by NOAA, Colorado Basin River Forecast Center
Salt Lake City, Utah, www.cbrfc.noaa.gov



Upper Colorado River System

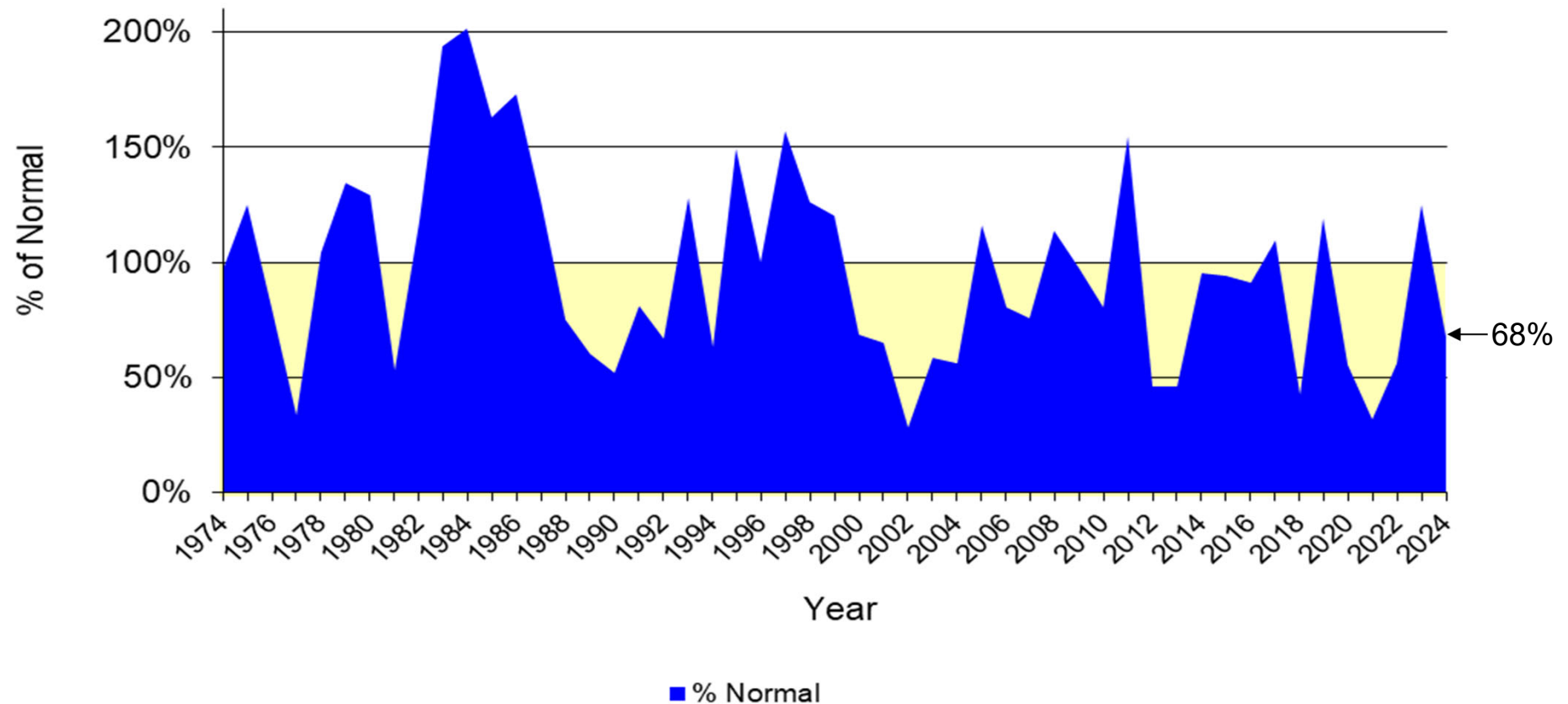
Water Year Precipitation to Date
(Average based on 1991 - 2020)



February 13, 2024



Lake Powell Annual Unregulated Inflow

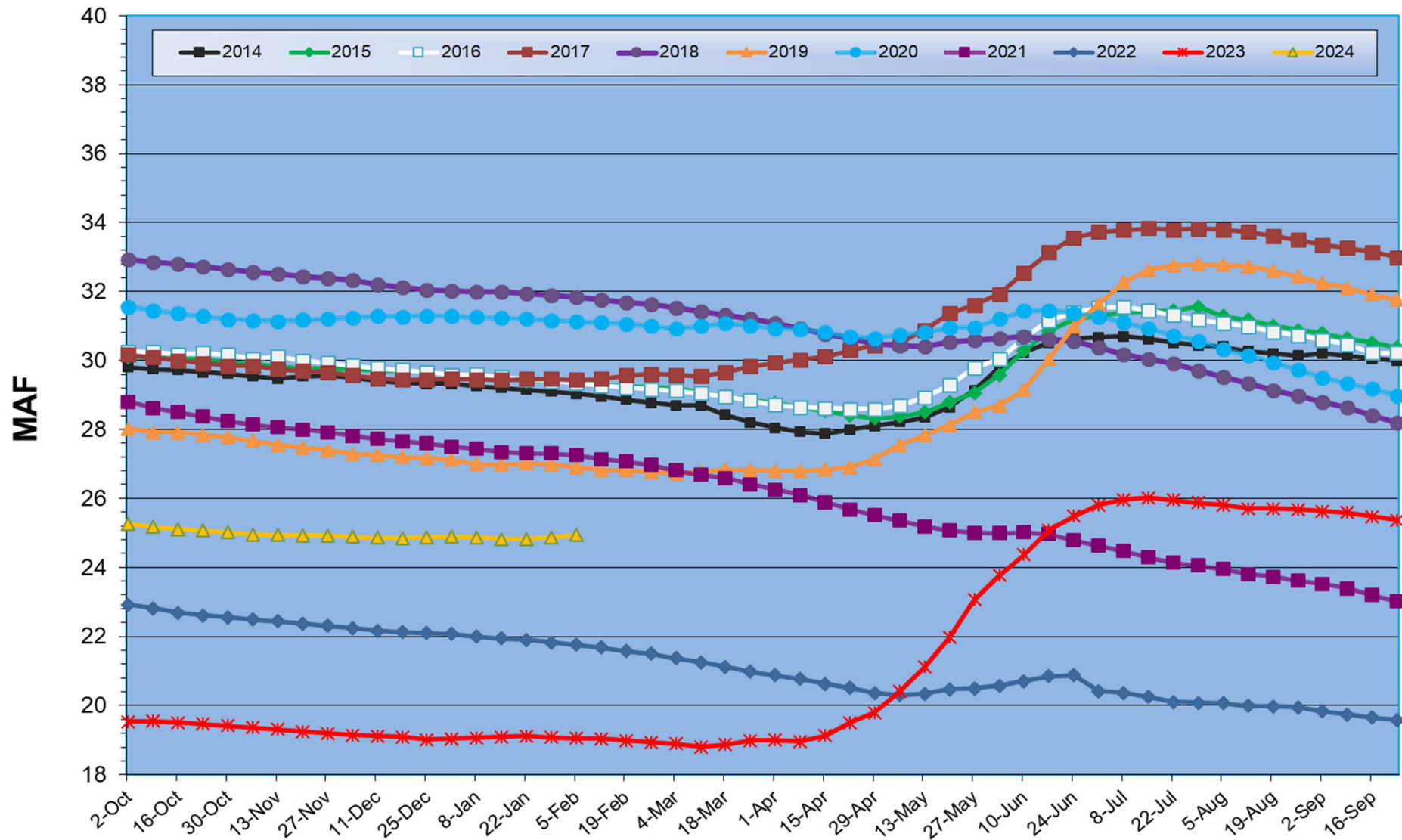


Normal = 10.8575 MAF

1991 to 2020

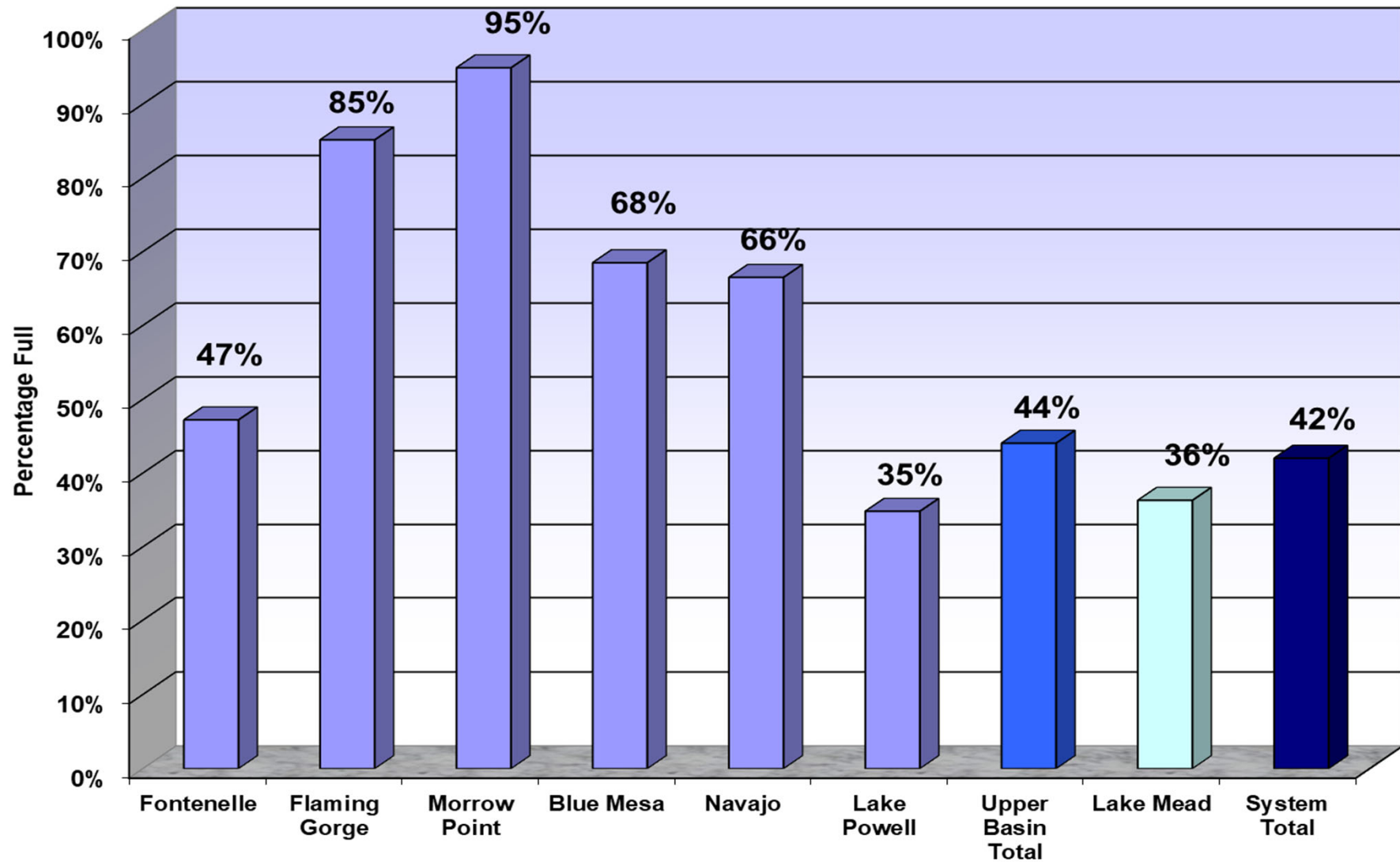


Total System Contents

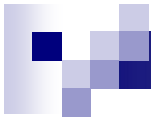


February 13, 2024

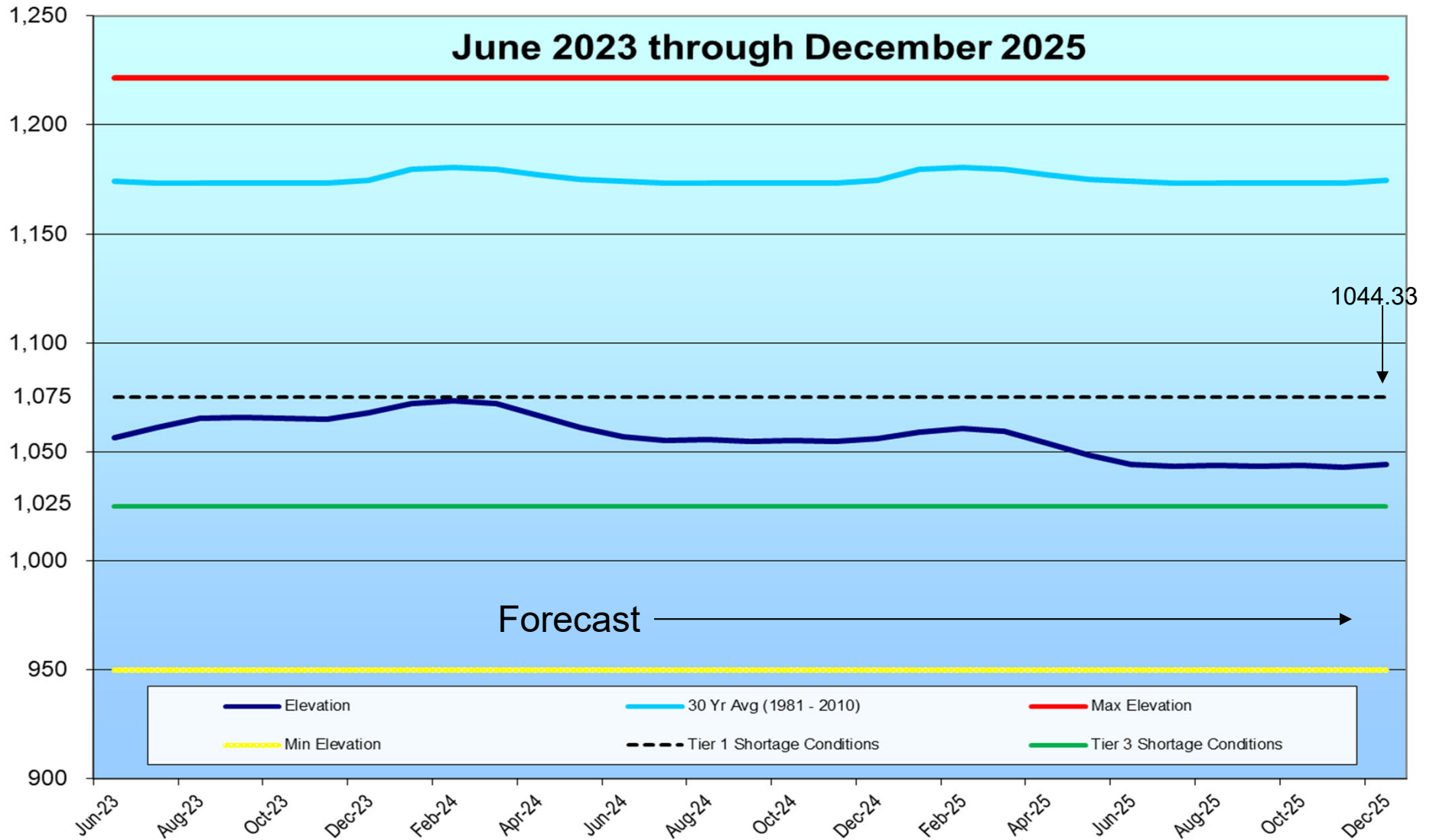
Reservoir and System Capacity as of 02/05/24



February 13, 2024



Lake Mead Elevation

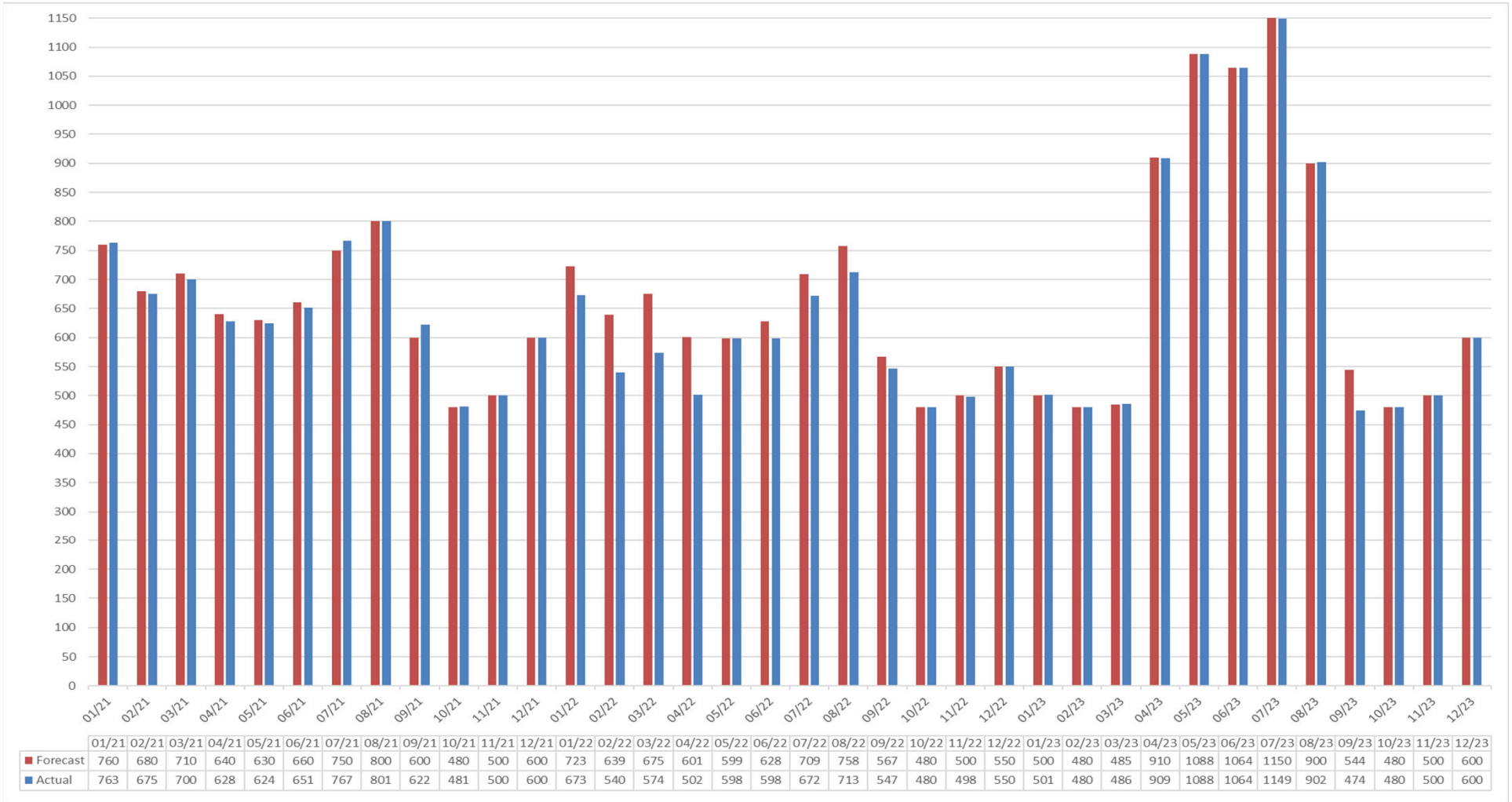


February 13, 2024

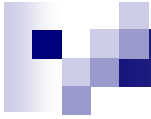


Glen Release

Actuals vs Forecast

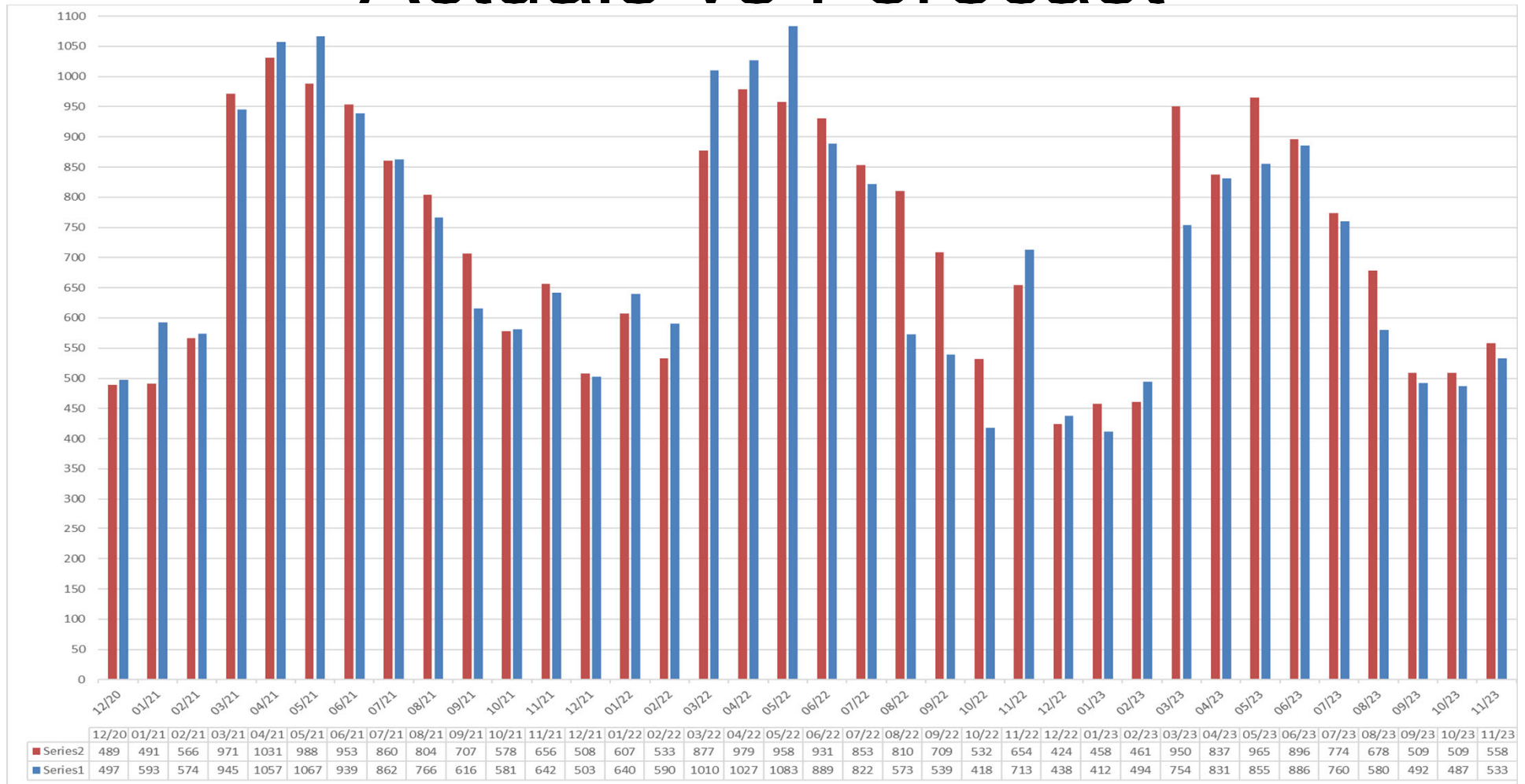


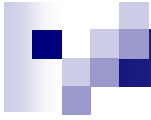
February 13, 2024



Hoover Release

Actuals vs Forecast





Questions or Comments?
Call Sonseeahray Thayer at:
602-368-4265

For a copy of this report, go to the Power Authority website
at: <http://www.powerauthority.org/>
and click on downloads.