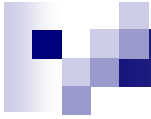


Operations Report

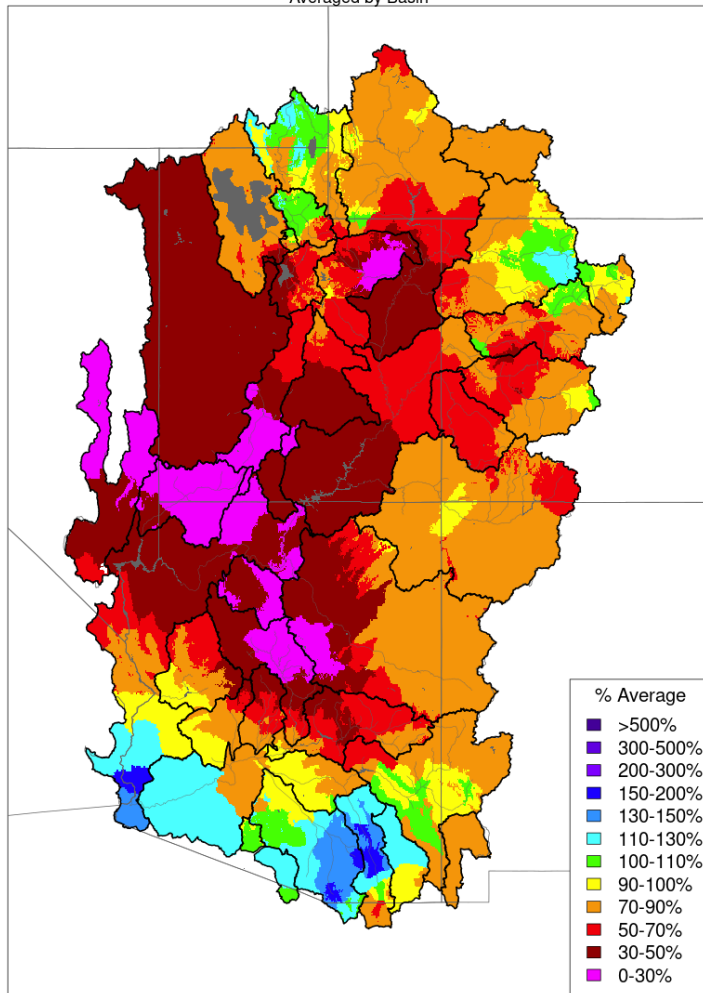
January 16, 2024



Monthly Precipitation

Monthly Precipitation - December 2023

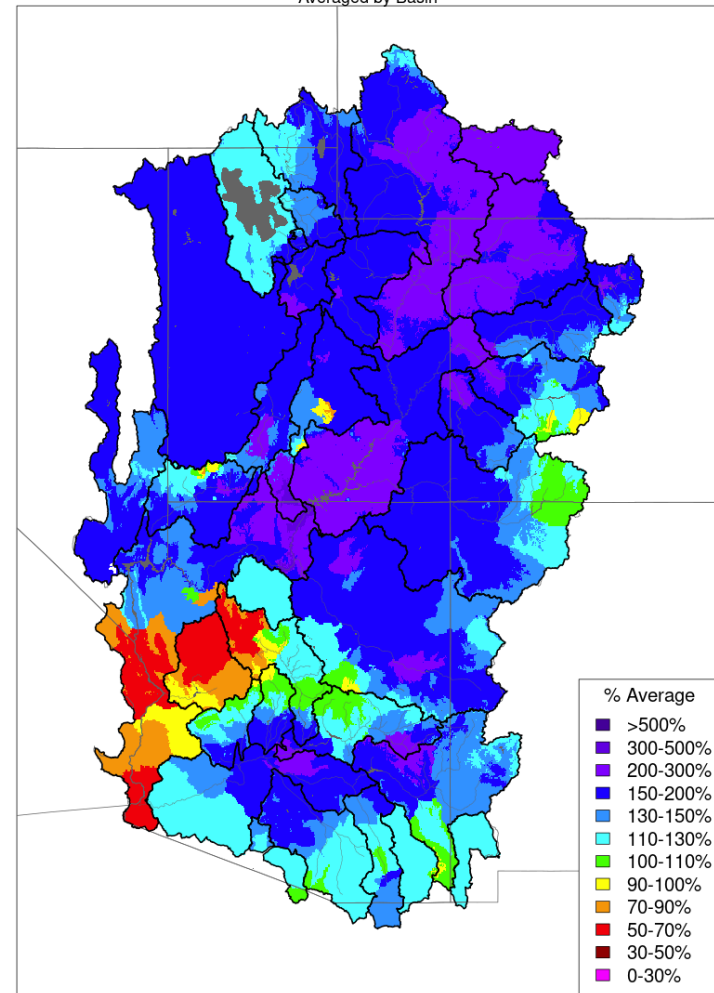
Averaged by Basin



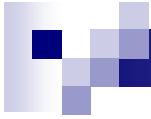
Prepared by NOAA, Colorado Basin River Forecast Center
Salt Lake City, Utah, www.cbrfc.noaa.gov

Monthly Precipitation - December 2022

Averaged by Basin



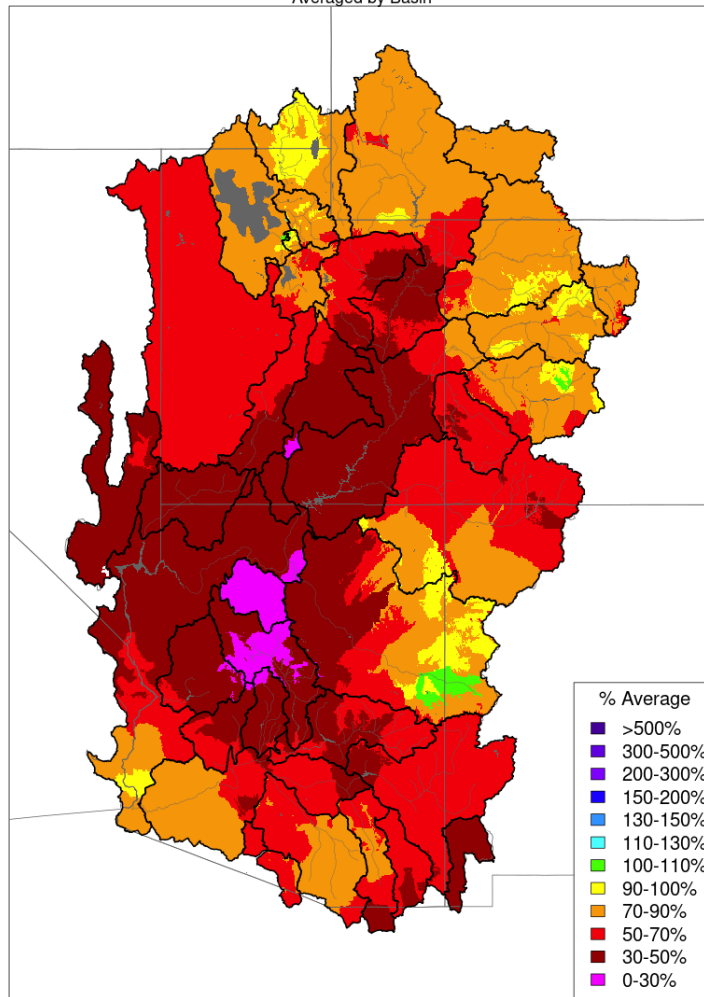
Prepared by NOAA, Colorado Basin River Forecast Center
Salt Lake City, Utah, www.cbrfc.noaa.gov



Water Year Precipitation

Water Year Precipitation, October 2023 - December 2023

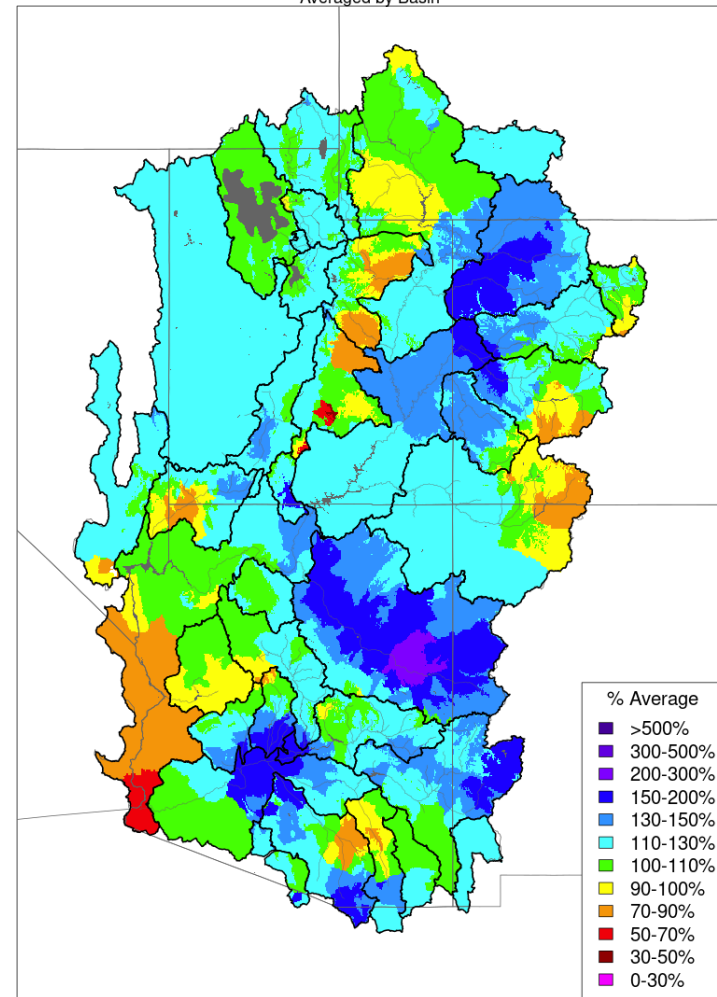
Averaged by Basin



Prepared by NOAA, Colorado Basin River Forecast Center
Salt Lake City, Utah, www.cbrfc.noaa.gov

Water Year Precipitation, October 2022 - December 2022

Averaged by Basin

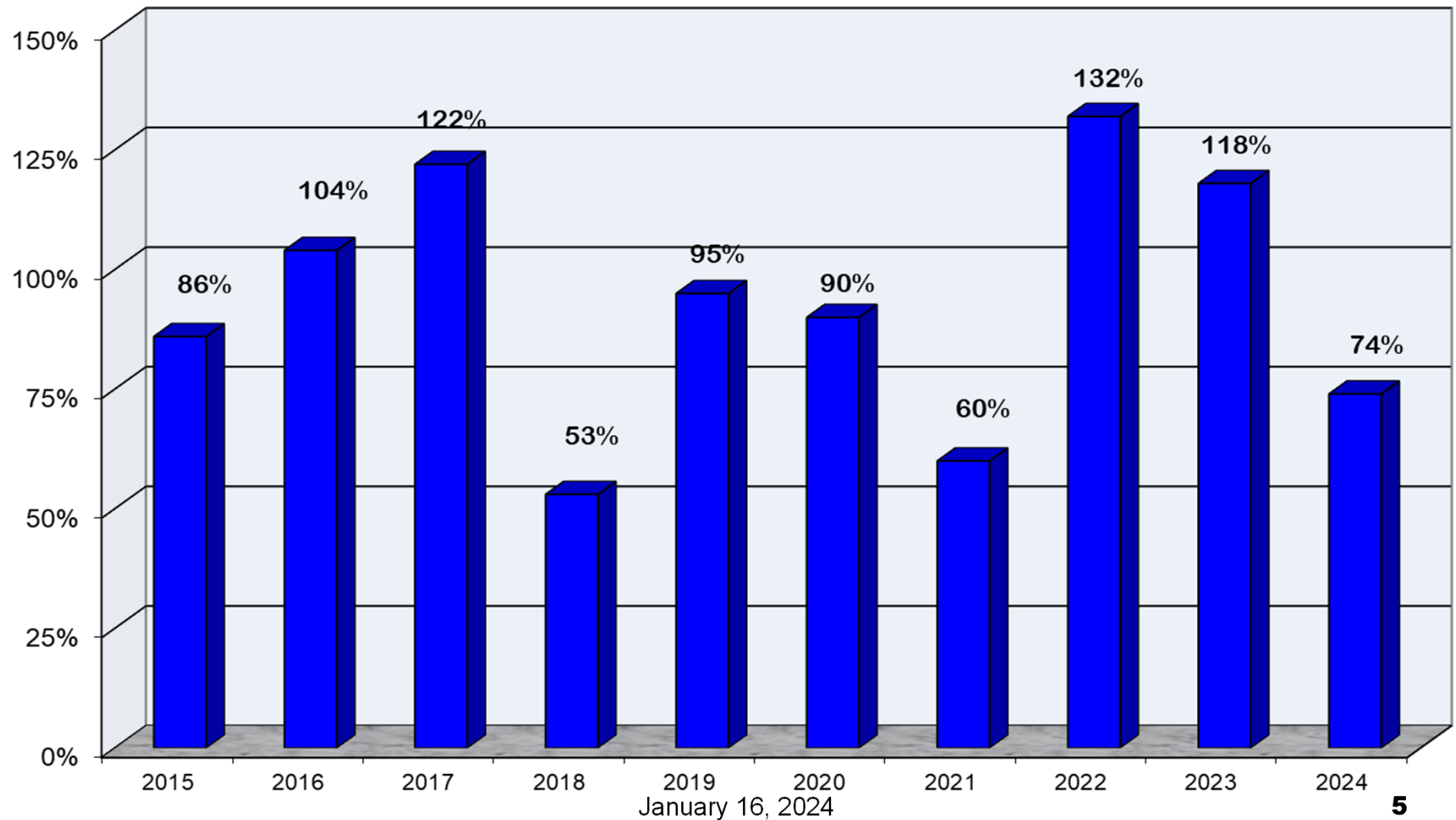


Prepared by NOAA, Colorado Basin River Forecast Center
Salt Lake City, Utah, www.cbrfc.noaa.gov



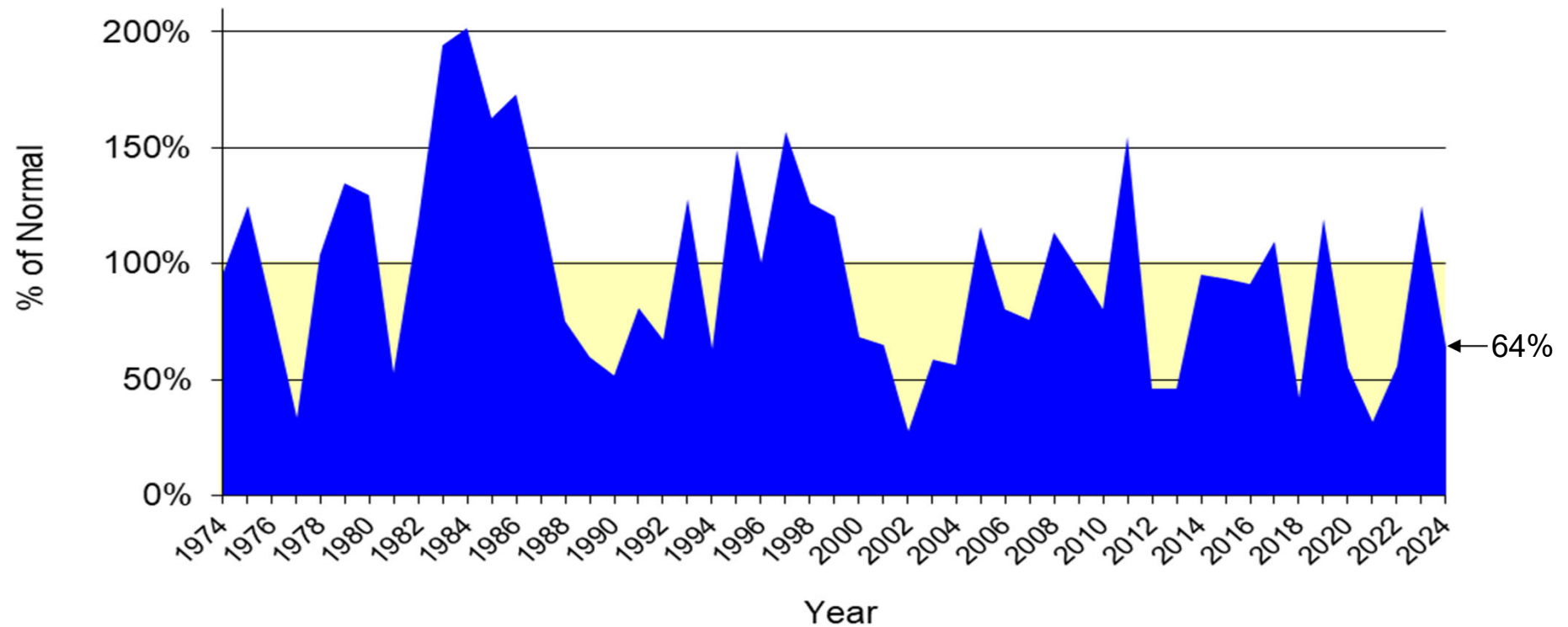
Upper Colorado River System

Water Year Precipitation to Date
(Average based on 1981 - 2010)





Lake Powell Annual Unregulated Inflow



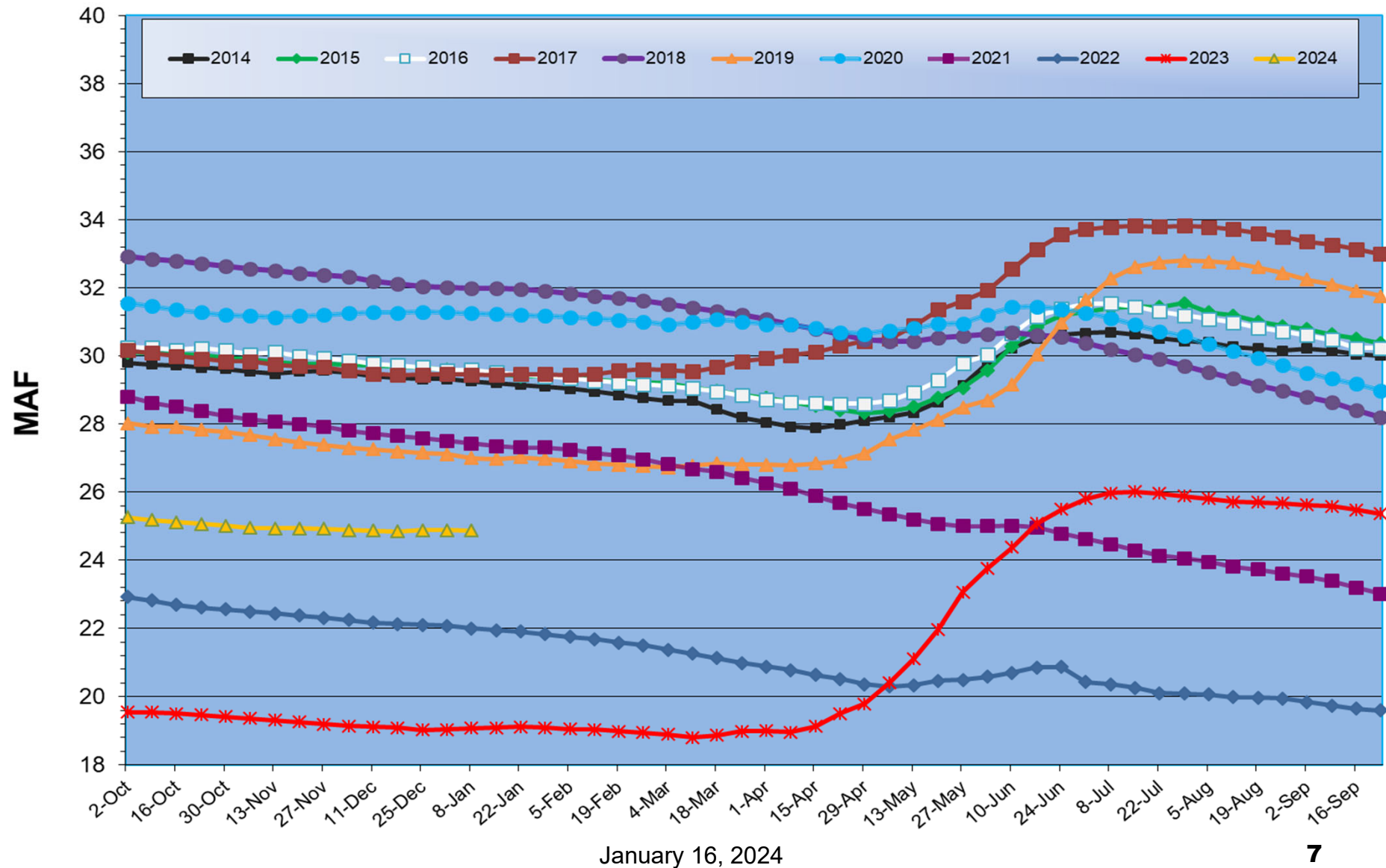
Normal = 10.8575 MAF

1981 to 2010

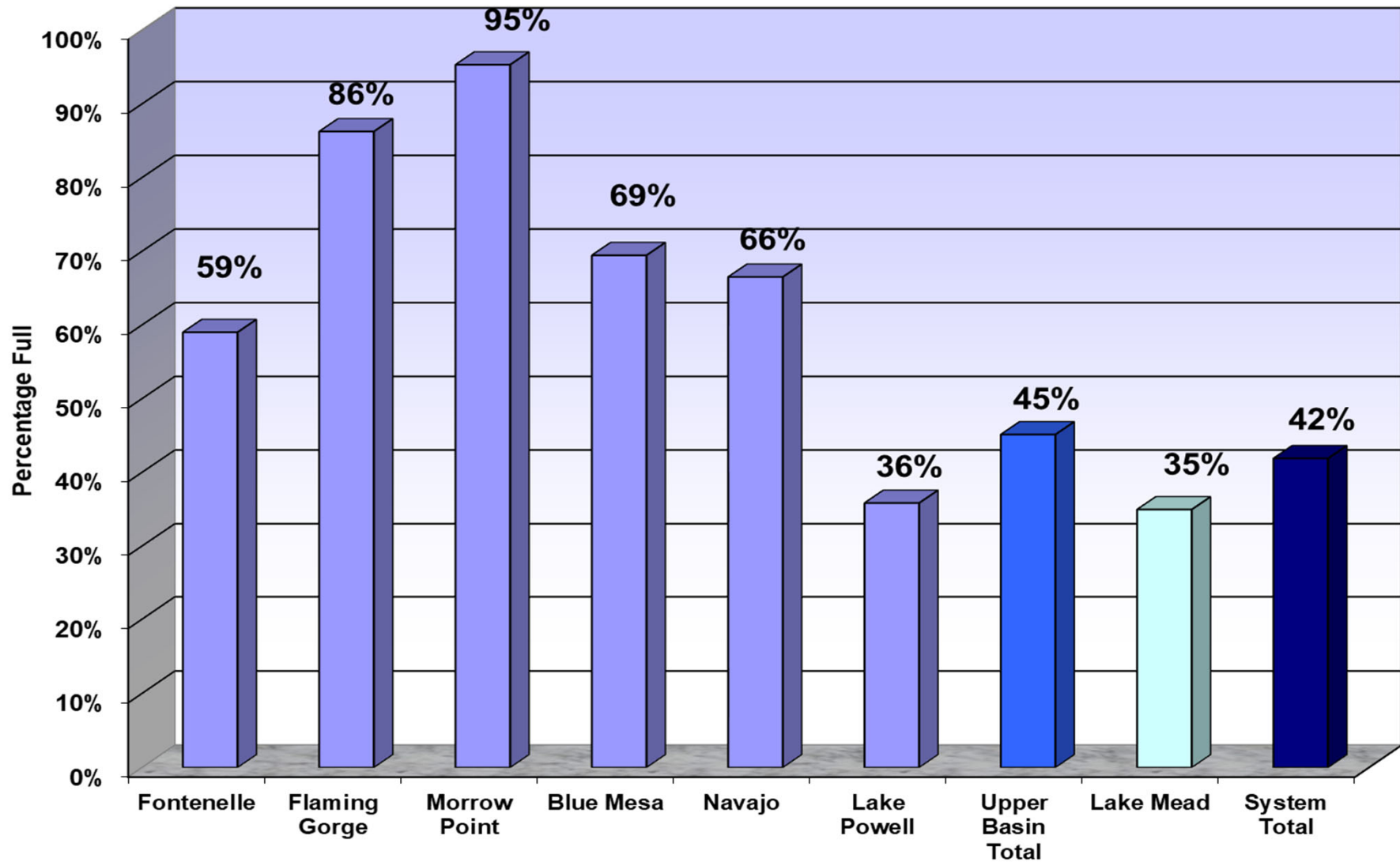
■ % Normal



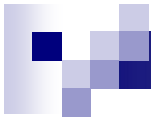
Total System Contents



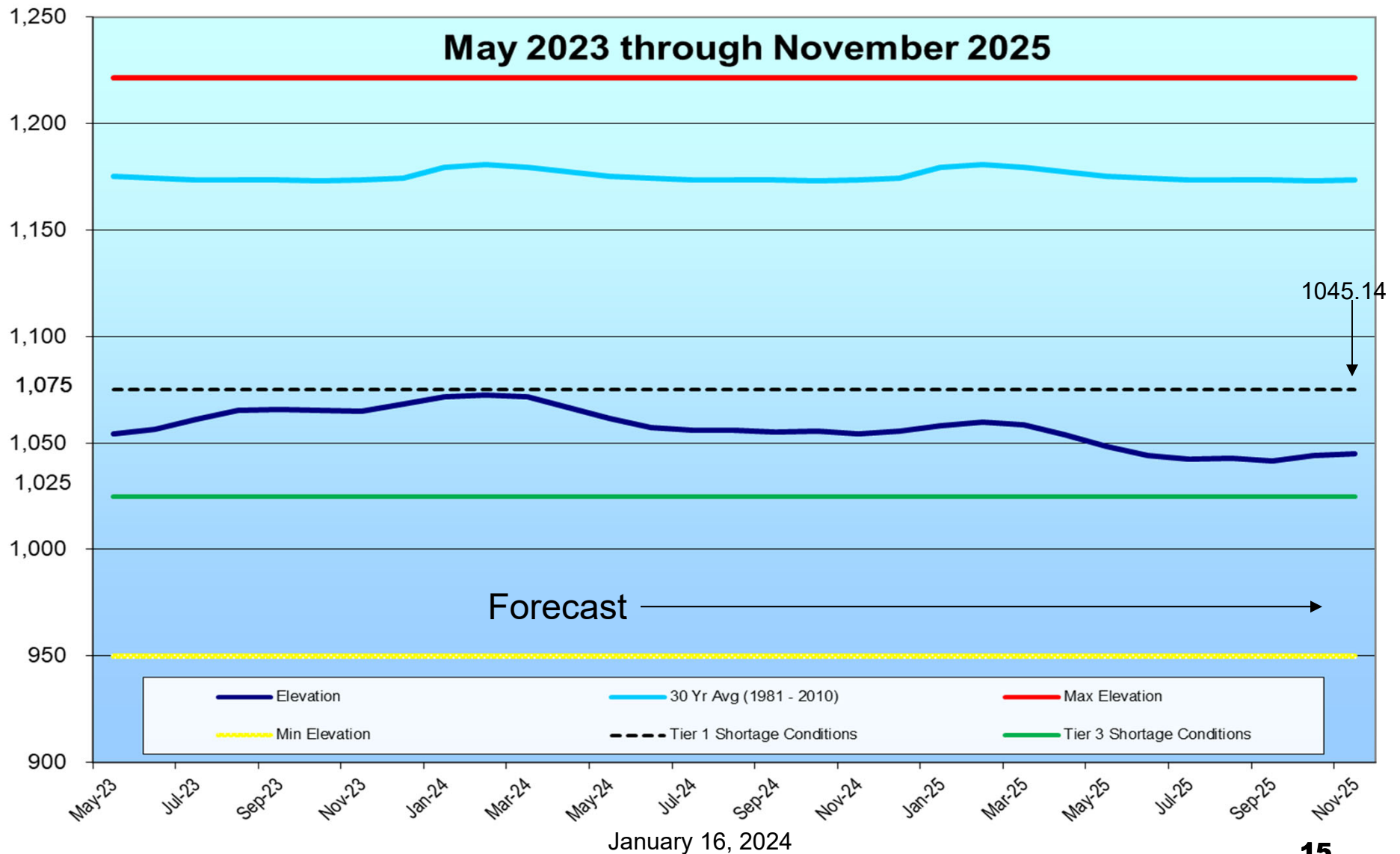
Reservoir and System Capacity as of 01/08/24

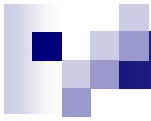


January 16, 2024



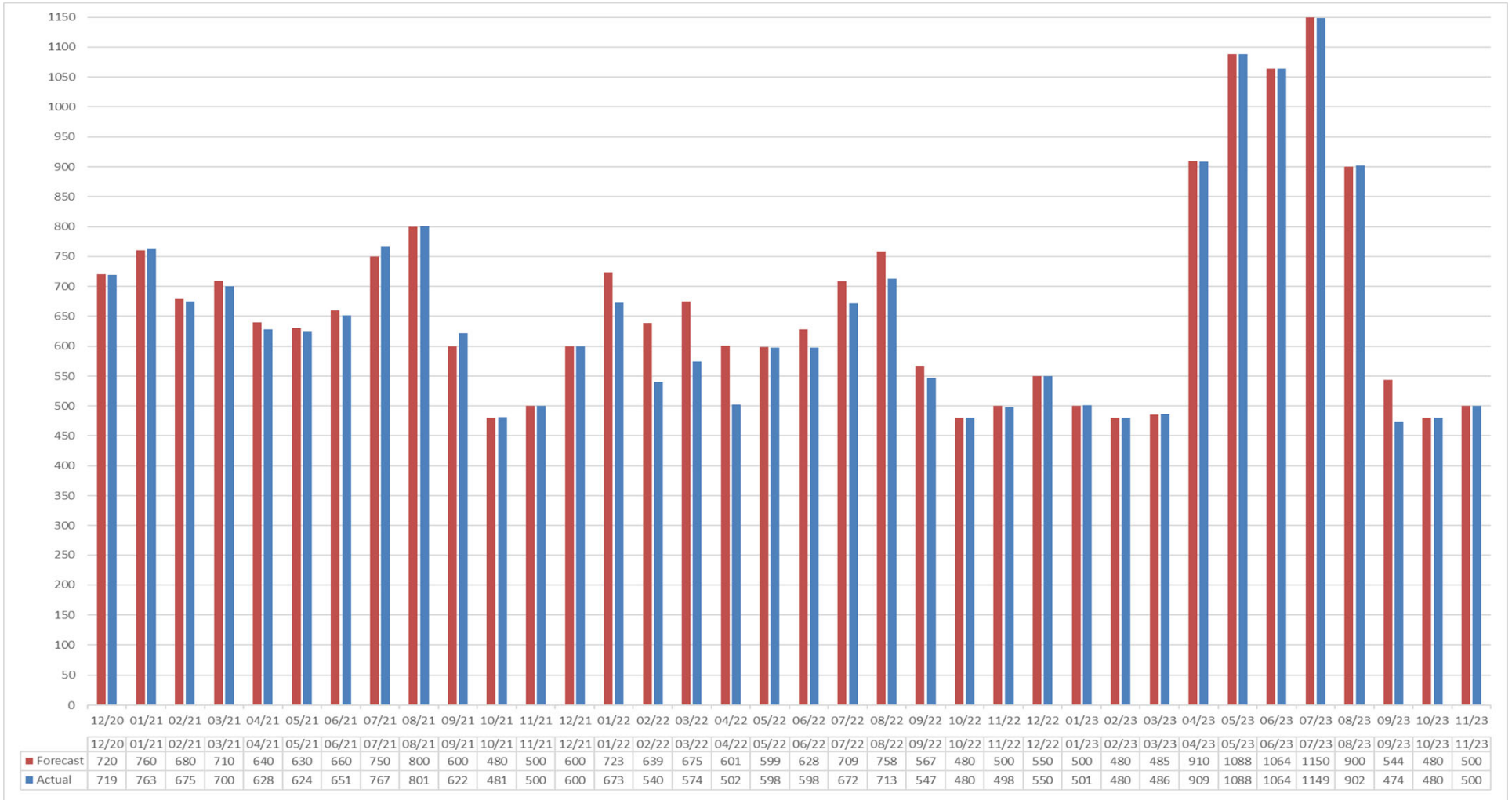
Lake Mead Elevation

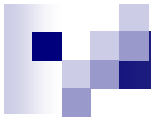




Glen Release

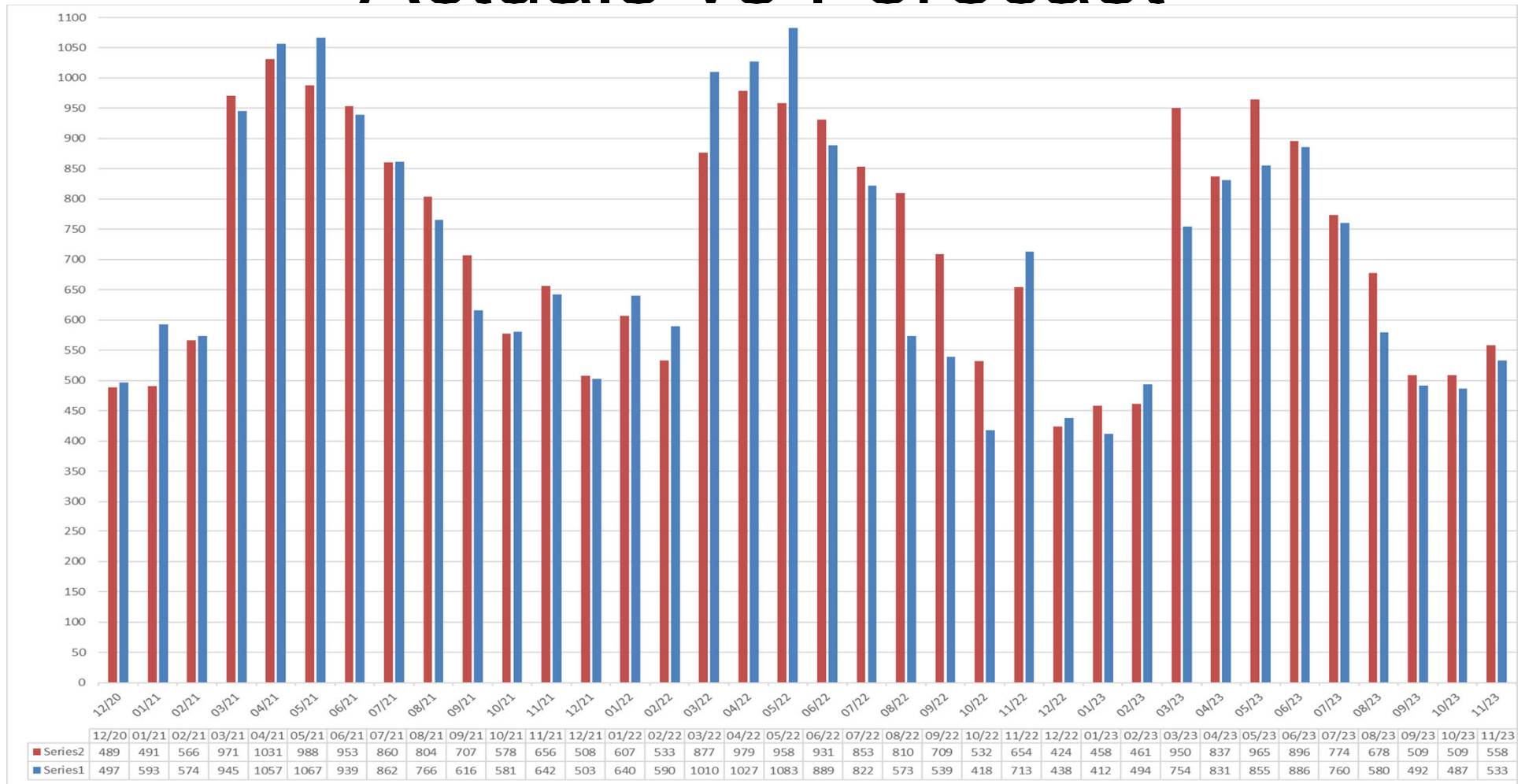
Actuals vs Forecast

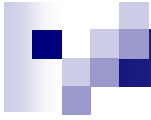




Hoover Release

Actuals vs Forecast





Questions or Comments?
Call Sonseeahray Thayer at:
602-368-4265

For a copy of this report, go to the Power Authority website
at: <http://www.powerauthority.org/>
and click on downloads.