

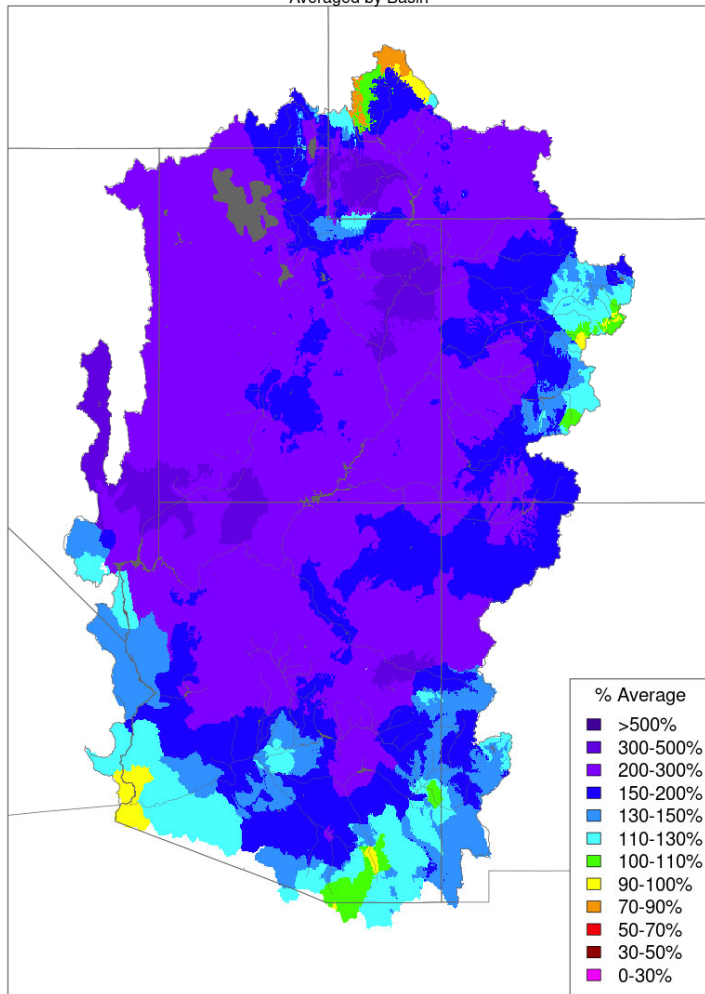


Operations Report

February 21, 2023

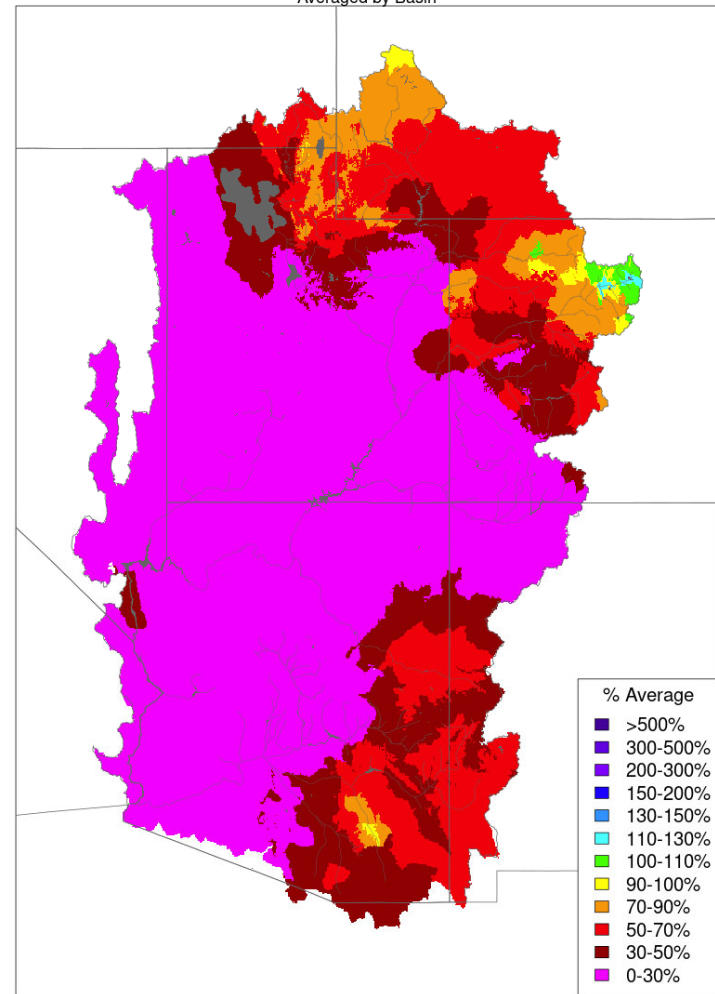
Monthly Precipitation

Monthly Precipitation - January 2023
Averaged by Basin



Prepared by NOAA, Colorado Basin River Forecast Center
Salt Lake City, Utah, www.cbrfc.noaa.gov

Monthly Precipitation - January 2022
Averaged by Basin

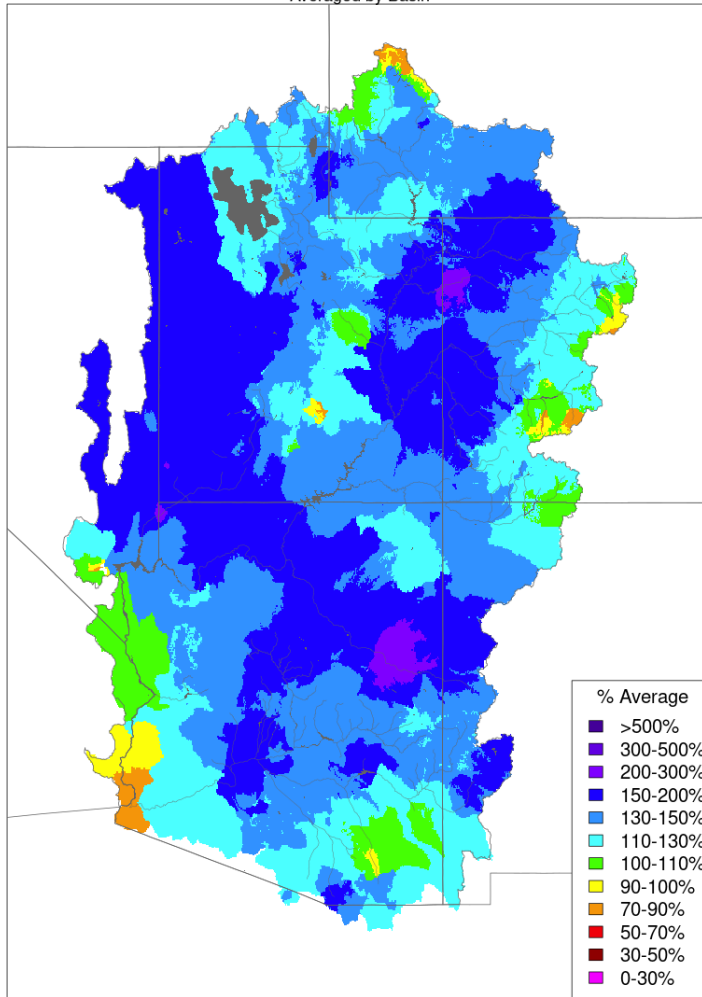


Prepared by NOAA, Colorado Basin River Forecast Center
Salt Lake City, Utah, www.cbrfc.noaa.gov

Water Year Precipitation

Water Year Precipitation, October 2022 - January 2023

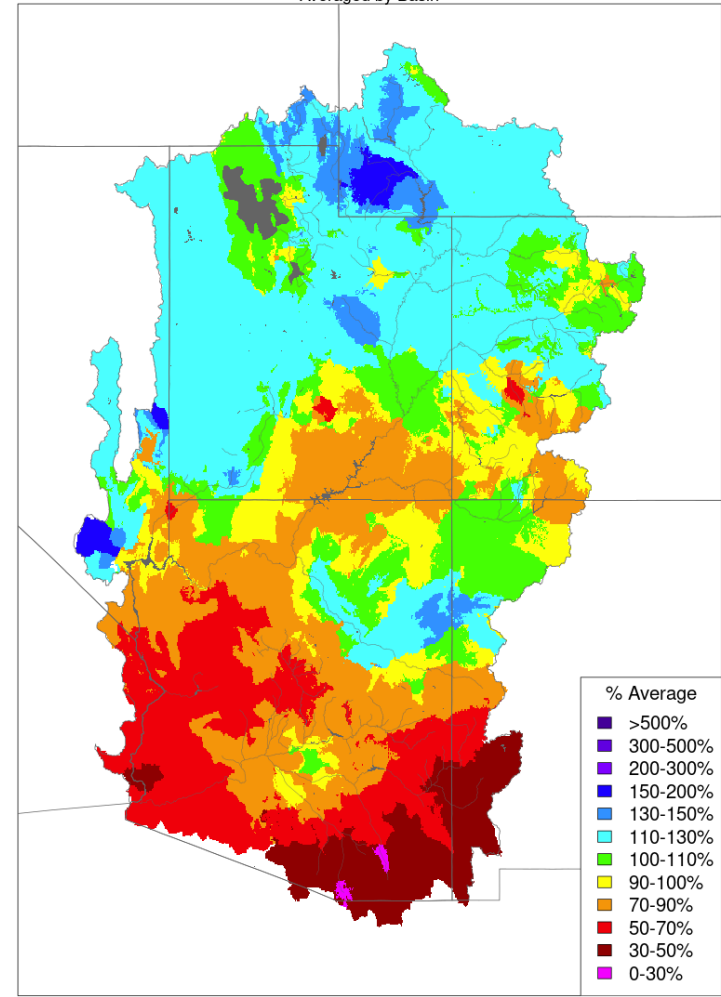
Averaged by Basin



Prepared by NOAA, Colorado Basin River Forecast Center
Salt Lake City, Utah, www.cbrfc.noaa.gov

Water Year Precipitation, October 2021 - January 2022

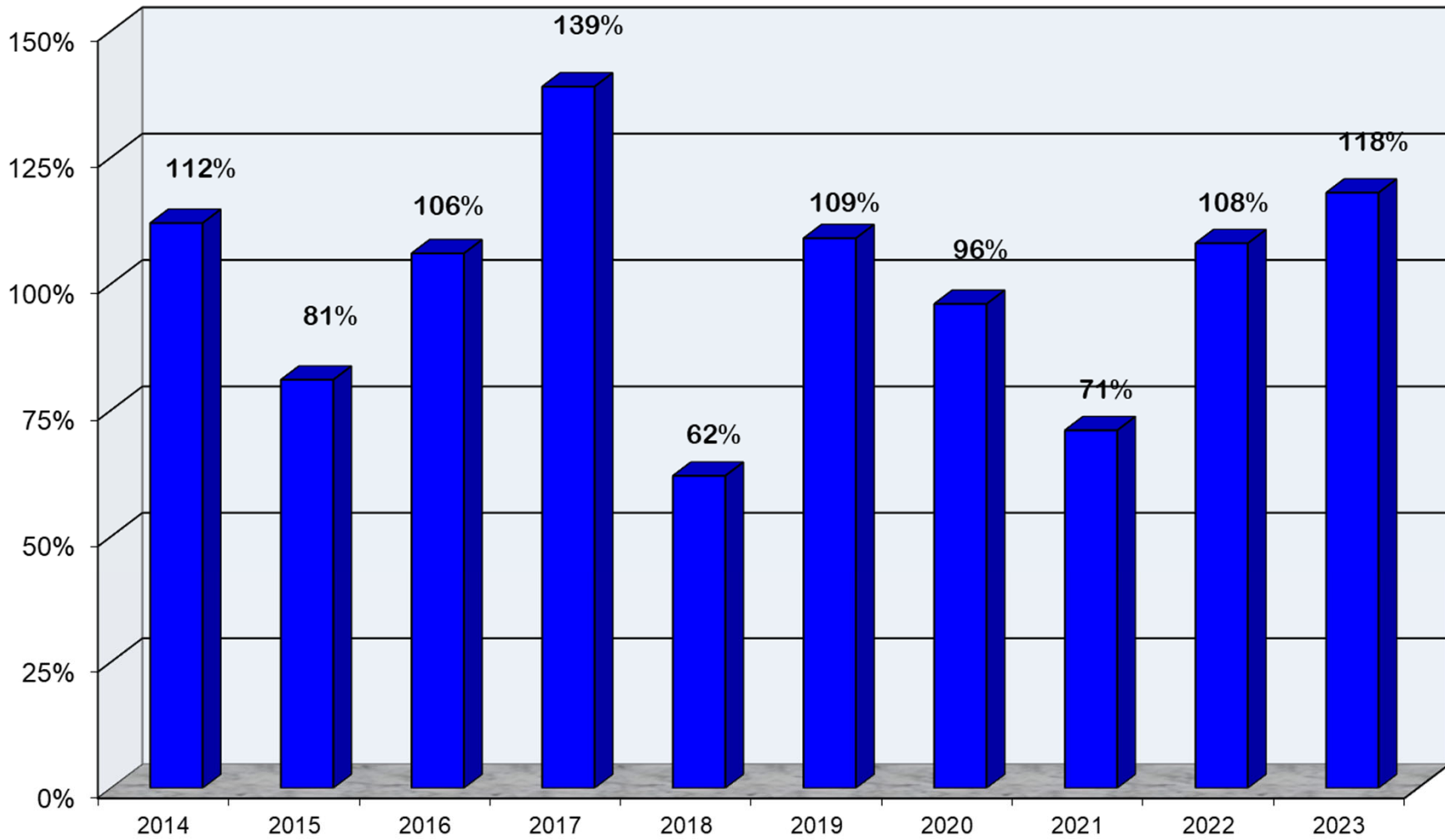
Averaged by Basin



Prepared by NOAA, Colorado Basin River Forecast Center
Salt Lake City, Utah, www.cbrfc.noaa.gov

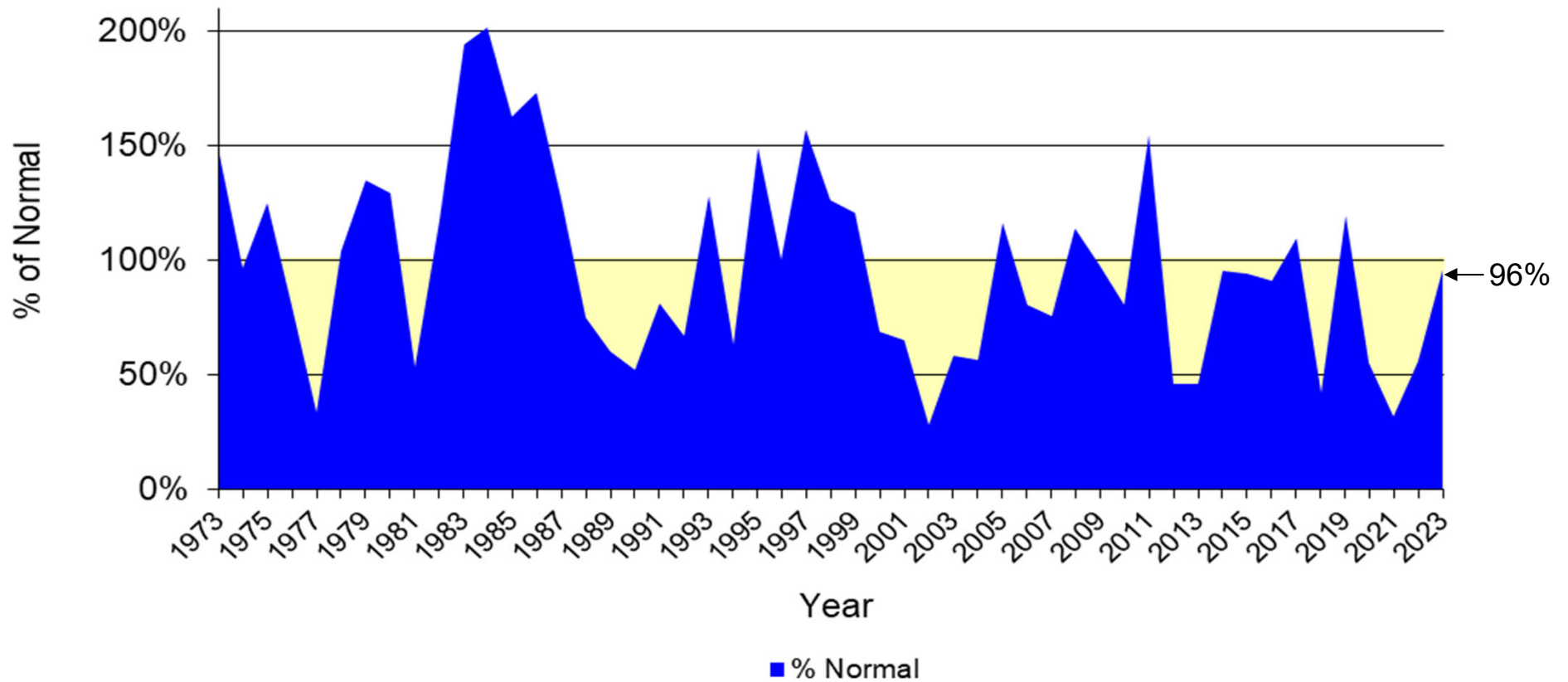
Upper Colorado River System

Water Year Precipitation to Date
(Average based on 1981 - 2010)



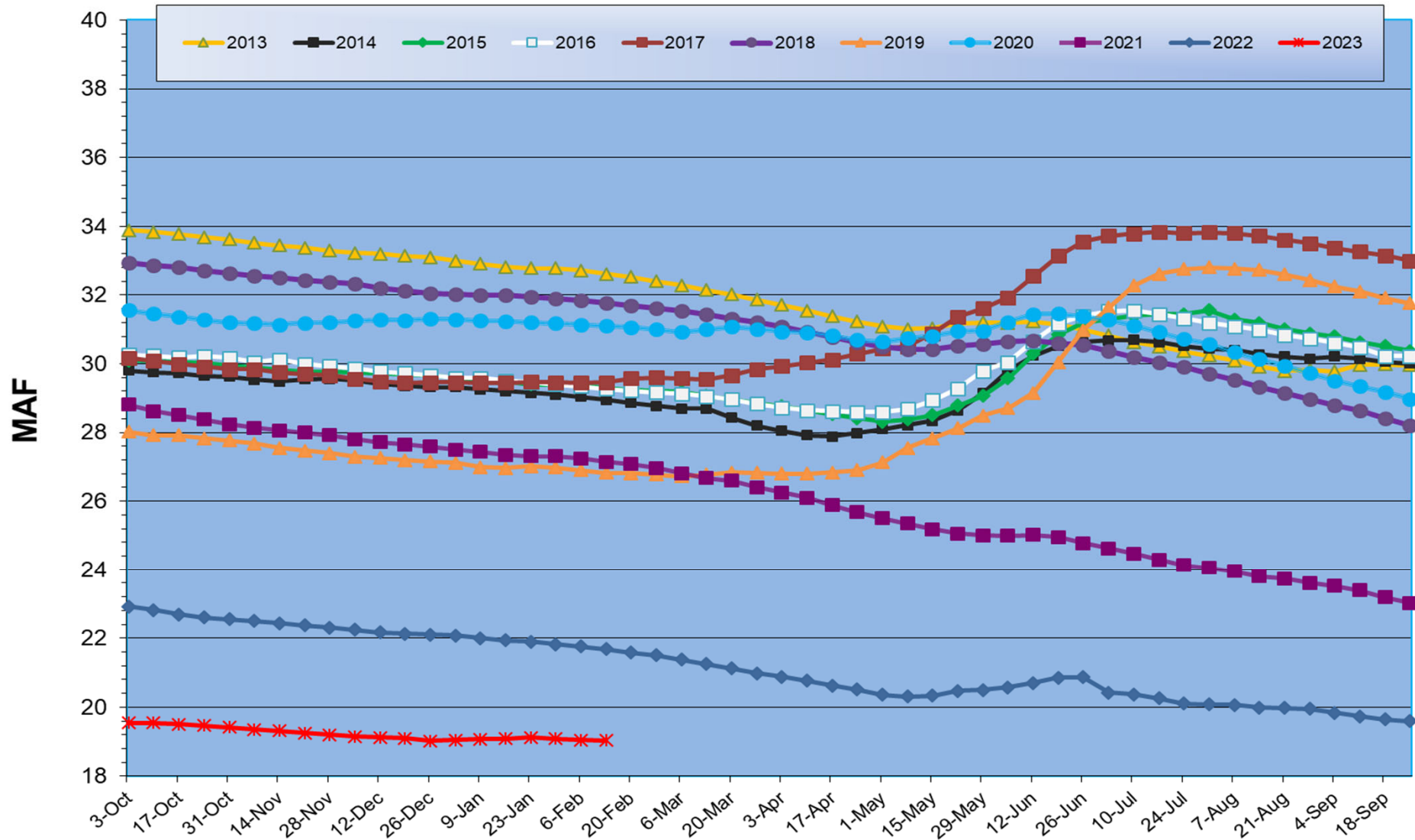
February 21, 2023

Lake Powell Annual Unregulated Inflow



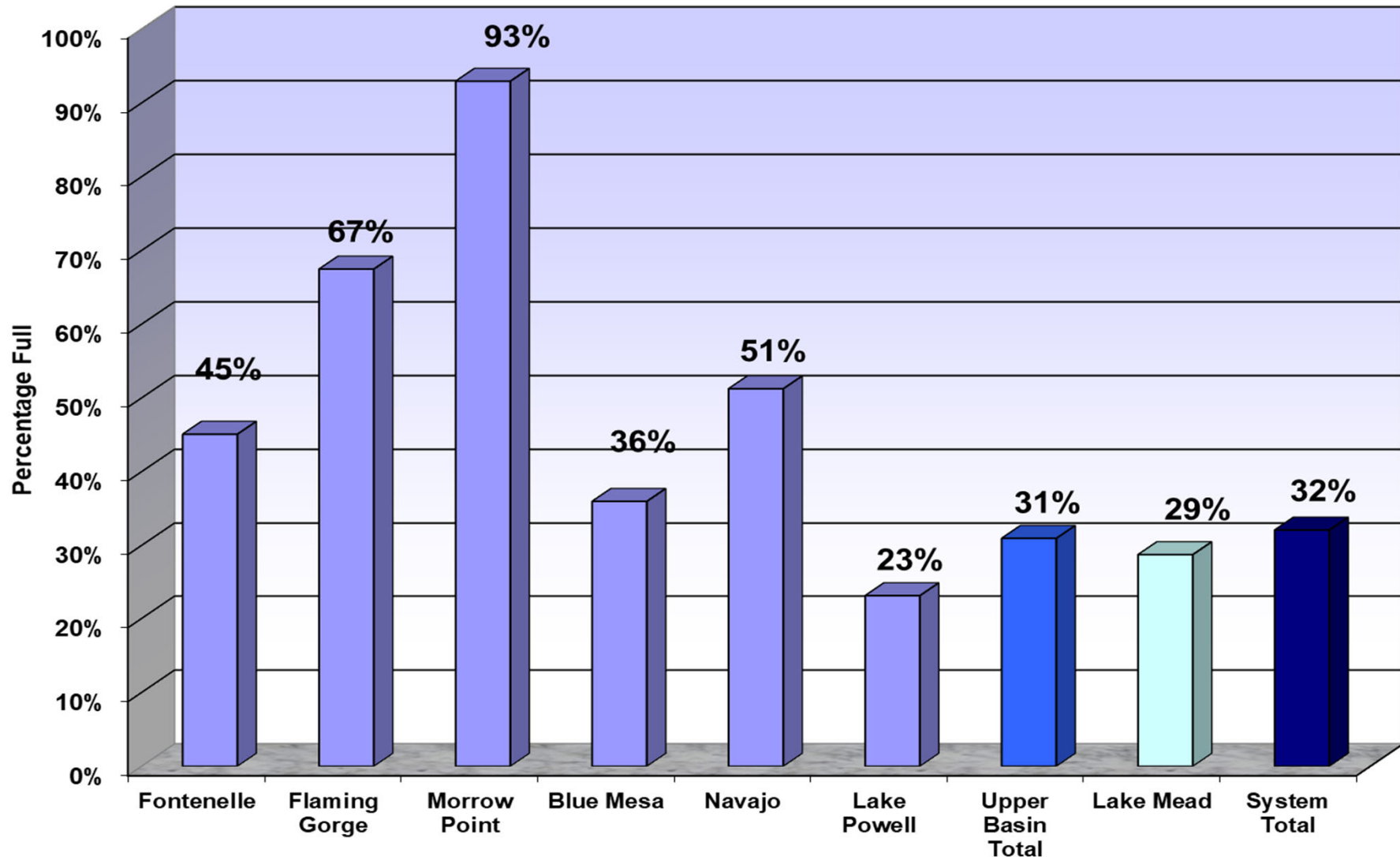
Normal = 10.8575 MAF
1981 to 2010

Total System Contents



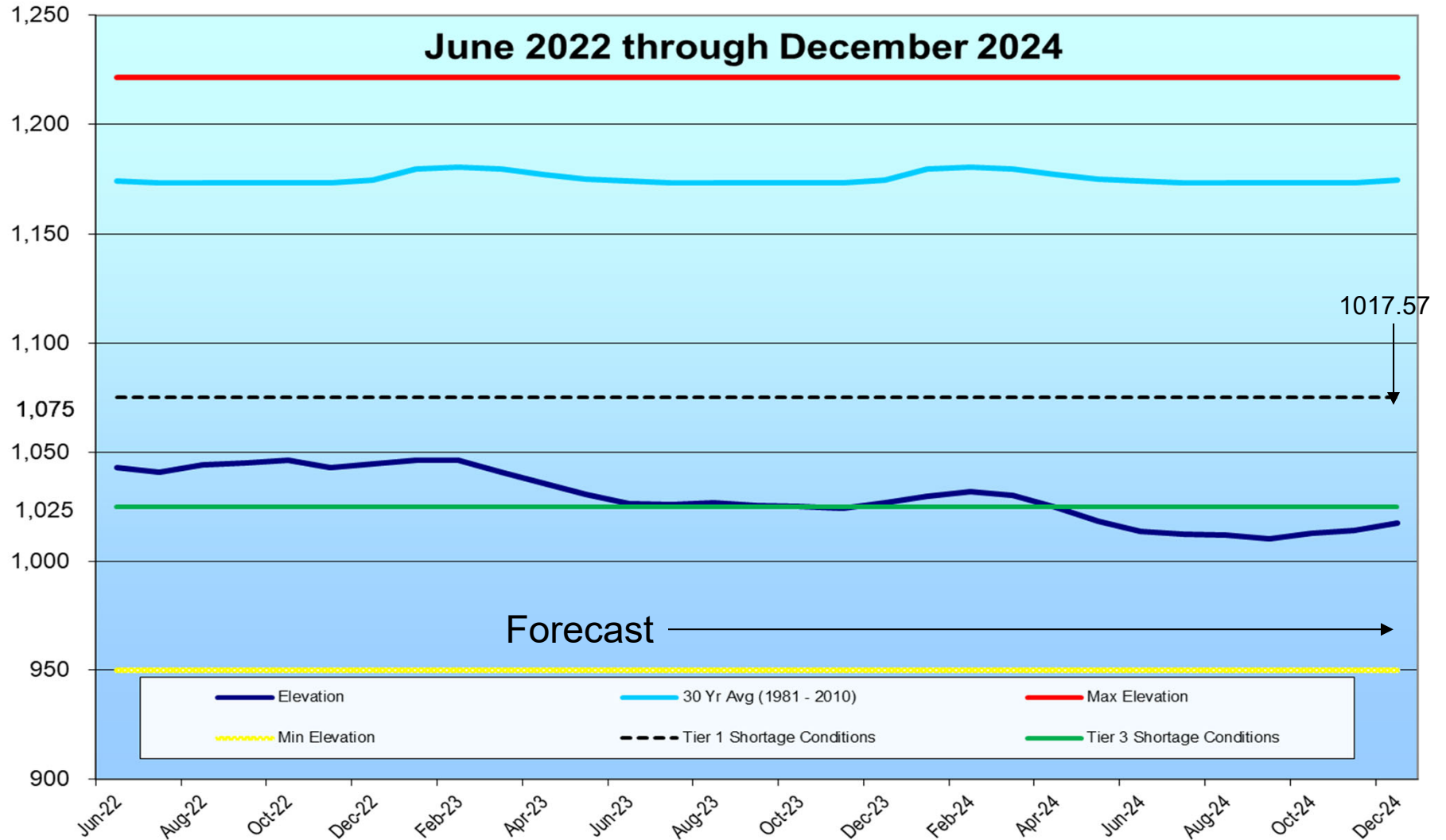
February 21, 2023

Reservoir and System Capacity as of 02/16/23



February 21, 2023

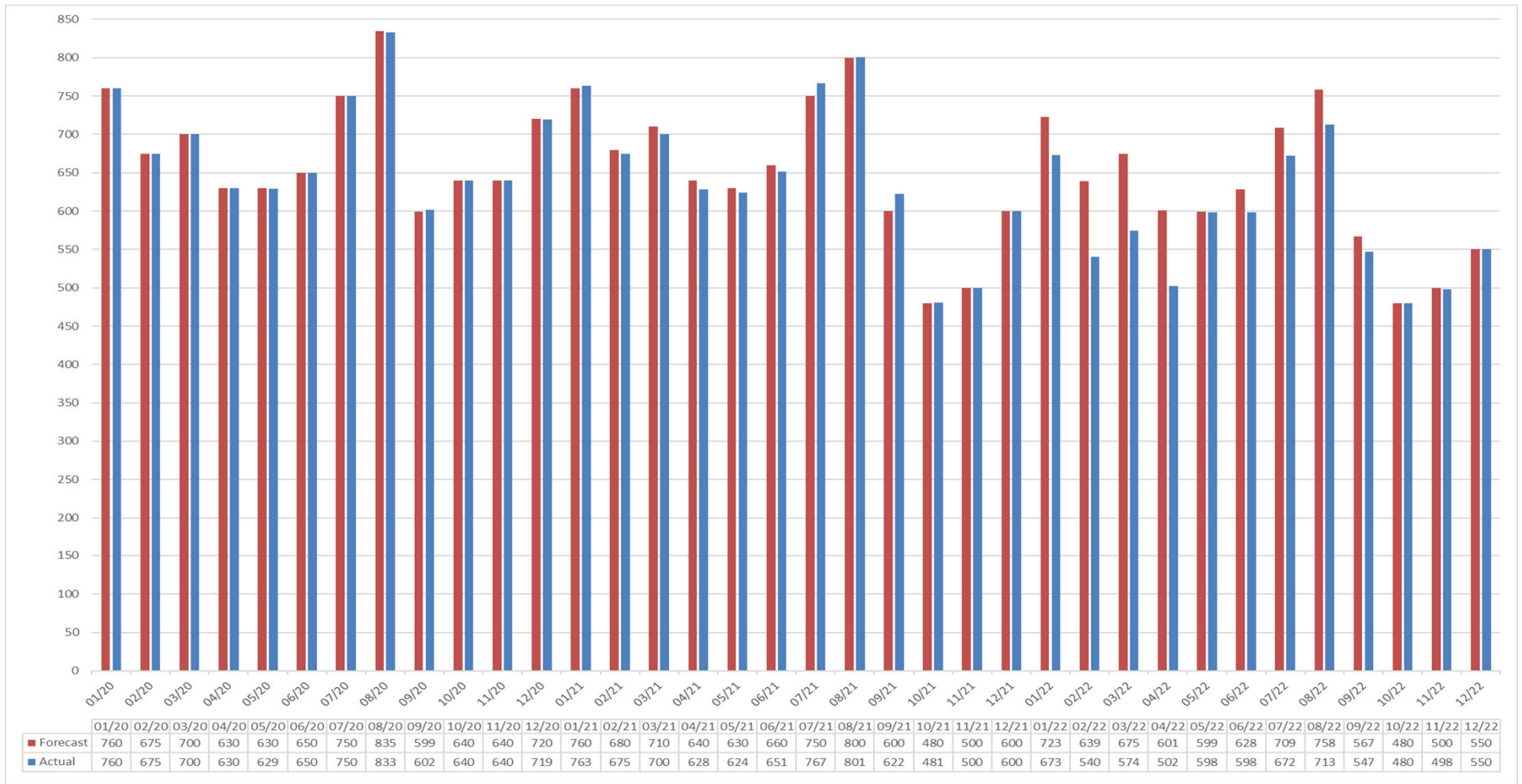
Lake Mead Elevation



February 21, 2023

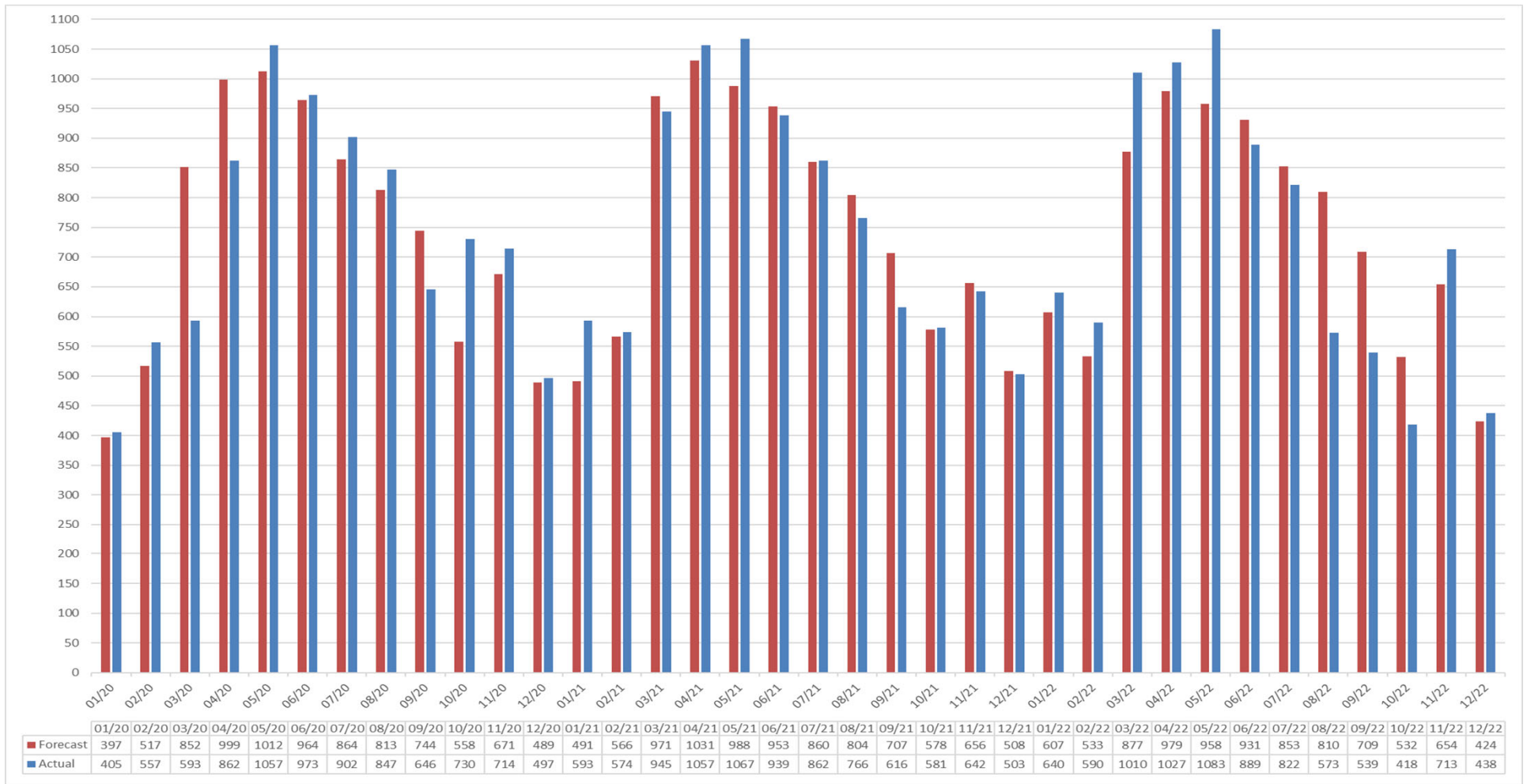
Glen Release

Actuals vs Forecast



Hoover Release

Actuals vs Forecast



Questions or Comments?
Call Sonseeahray Thayer at:
602-368-4265

For a copy of this report, go to the Power Authority website
at: <http://www.powerauthority.org/>
and click on downloads.