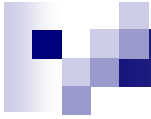


Operations Report

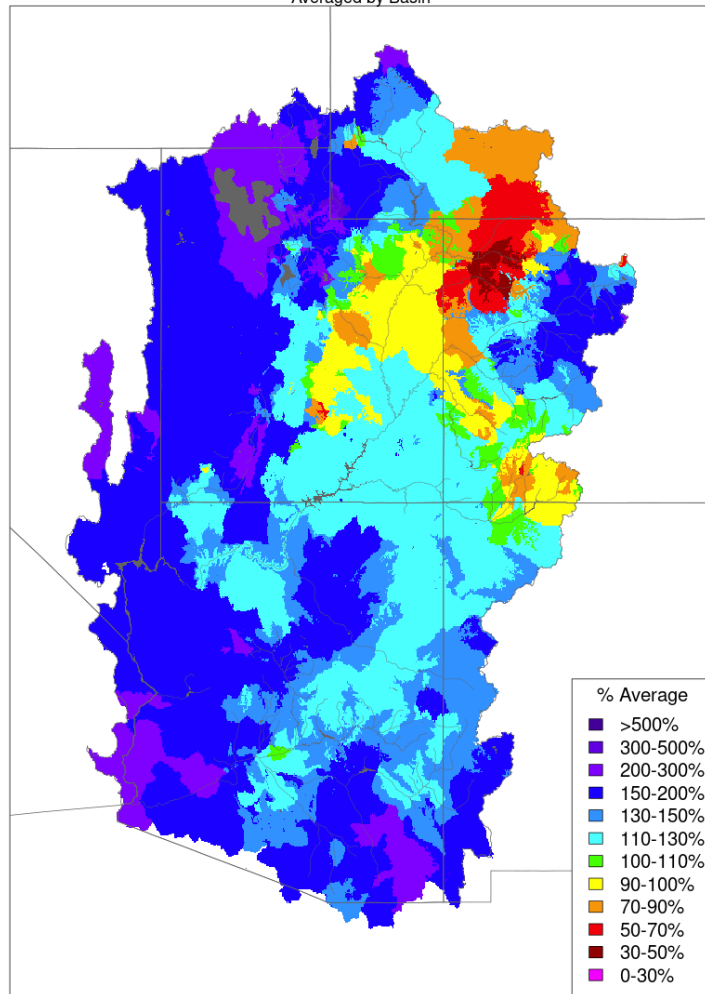
September 22, 2022



Monthly Precipitation

Monthly Precipitation - August 2022

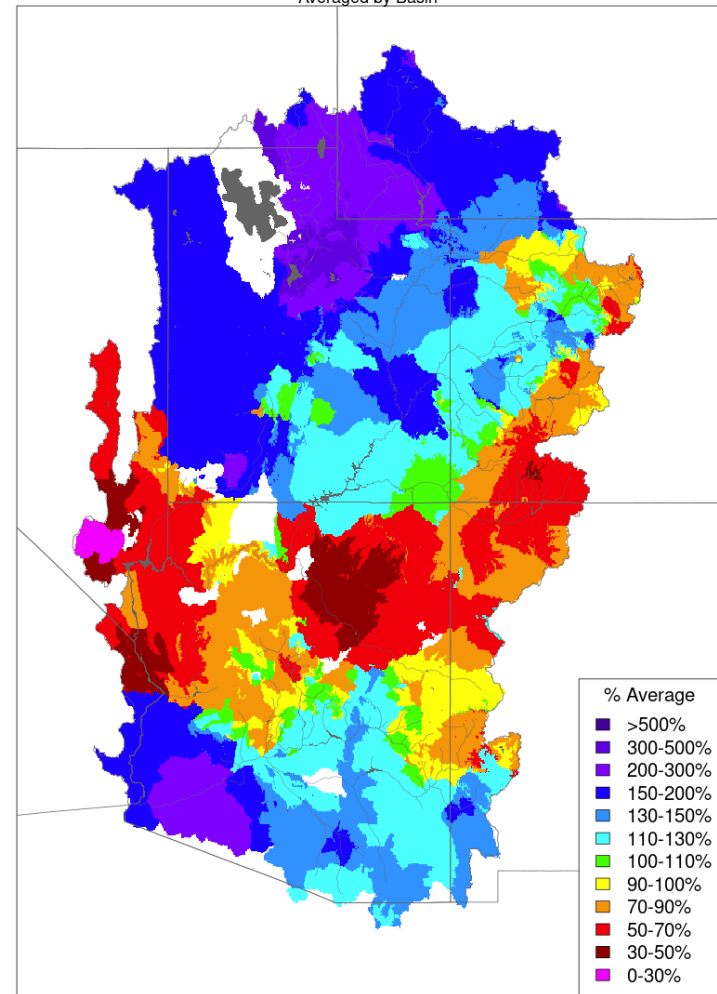
Averaged by Basin



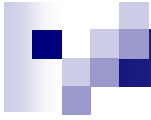
Prepared by NOAA, Colorado Basin River Forecast Center
Salt Lake City, Utah, www.cbrfc.noaa.gov

Monthly Precipitation - August 2021

Averaged by Basin



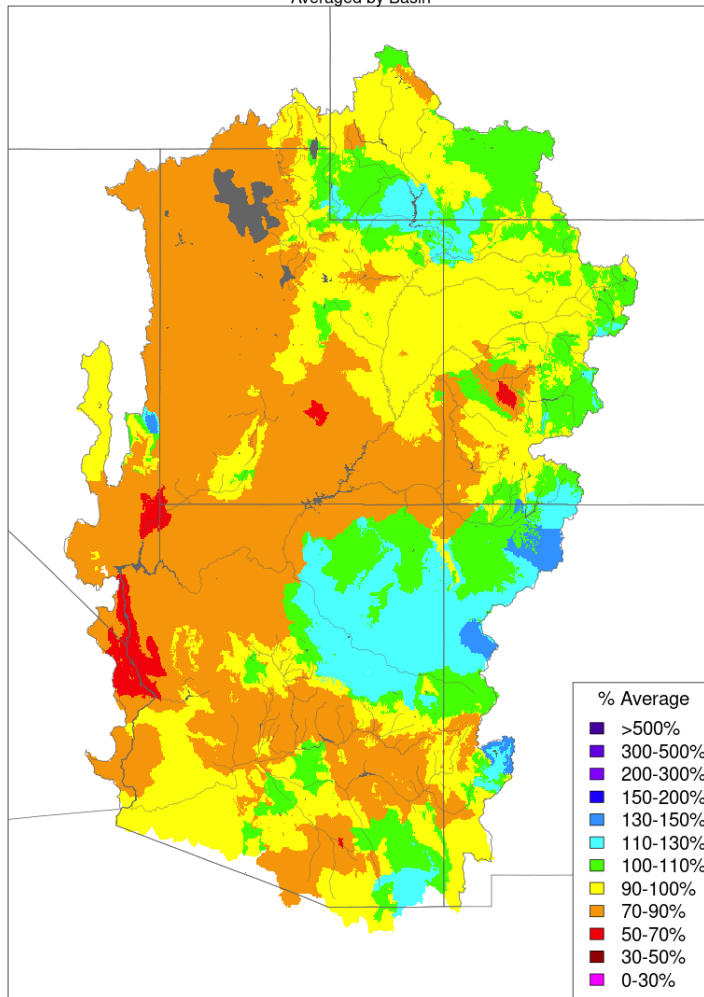
Prepared by NOAA, Colorado Basin River Forecast Center
Salt Lake City, Utah, www.cbrfc.noaa.gov



Water Year Precipitation

Water Year Precipitation, October 2021 - August 2022

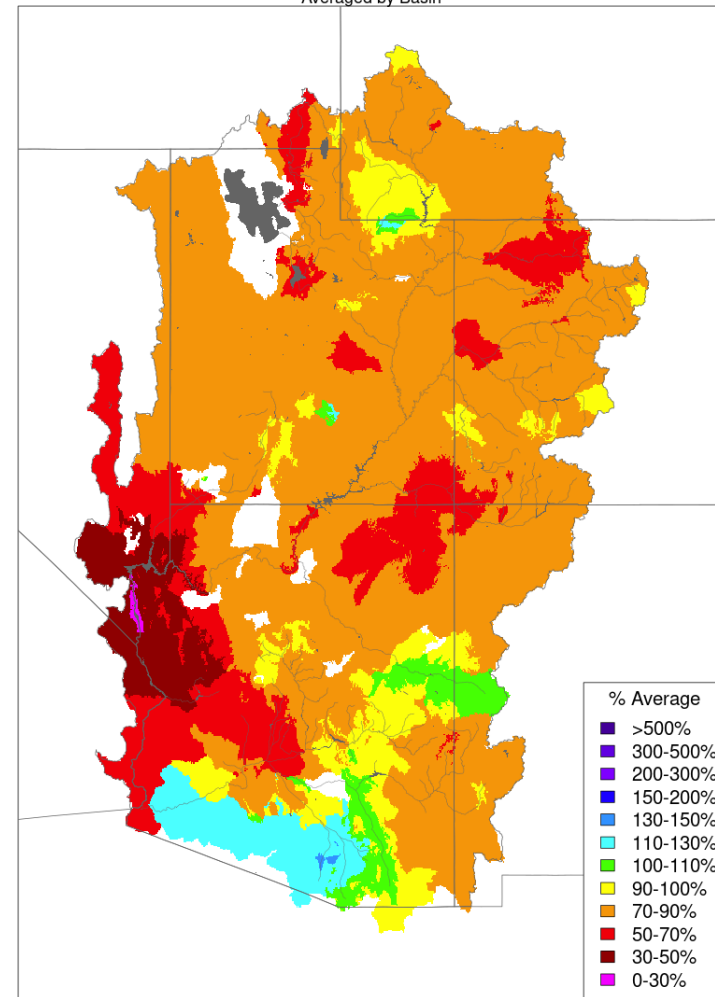
Averaged by Basin



Prepared by NOAA, Colorado Basin River Forecast Center
Salt Lake City, Utah, www.cbrfc.noaa.gov

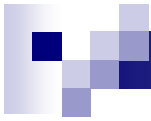
Water Year Precipitation, October 2020 - August 2021

Averaged by Basin



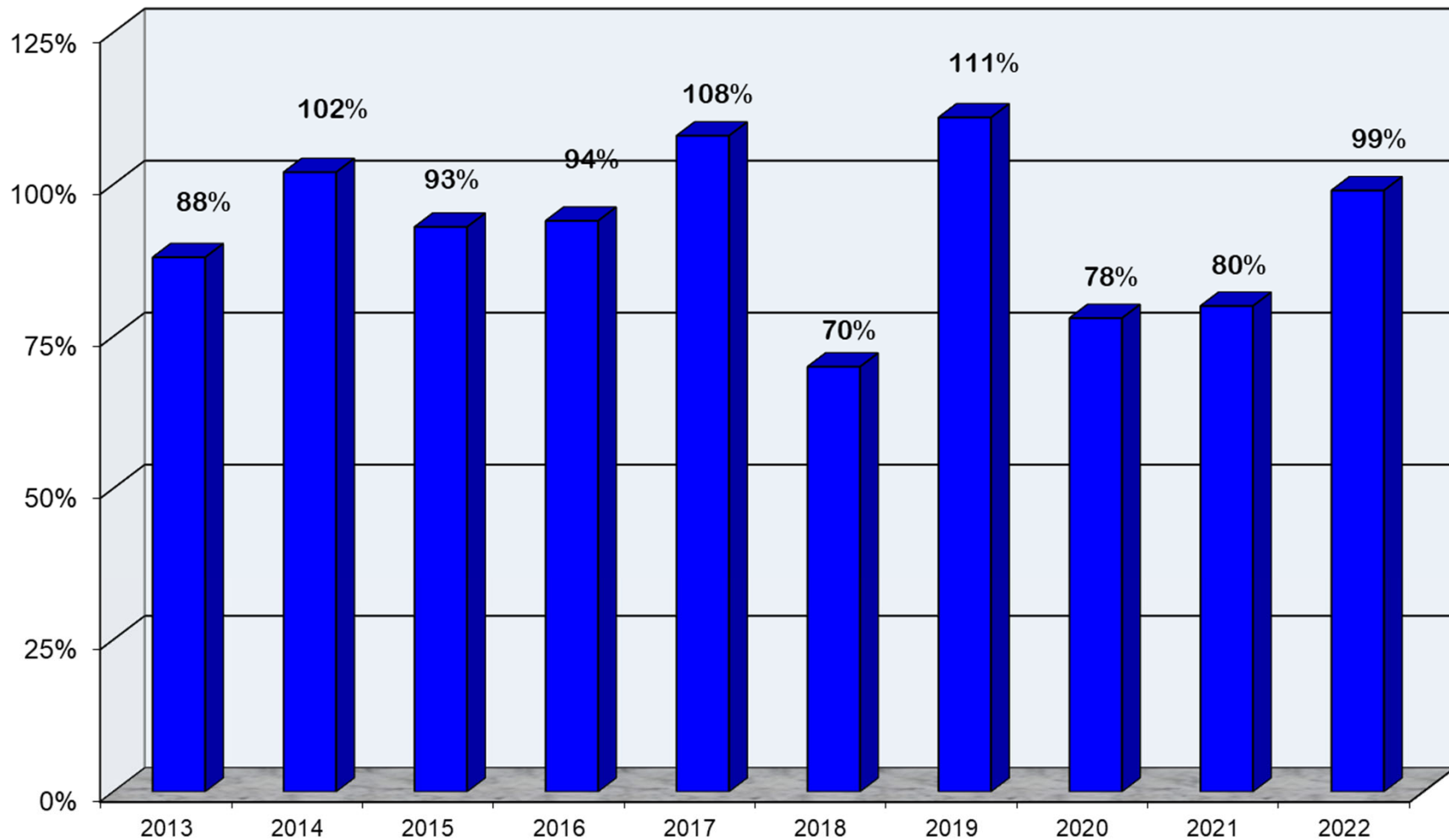
Prepared by NOAA, Colorado Basin River Forecast Center
Salt Lake City, Utah, www.cbrfc.noaa.gov

September 22, 2022

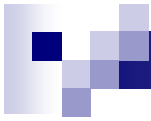


Upper Colorado River System

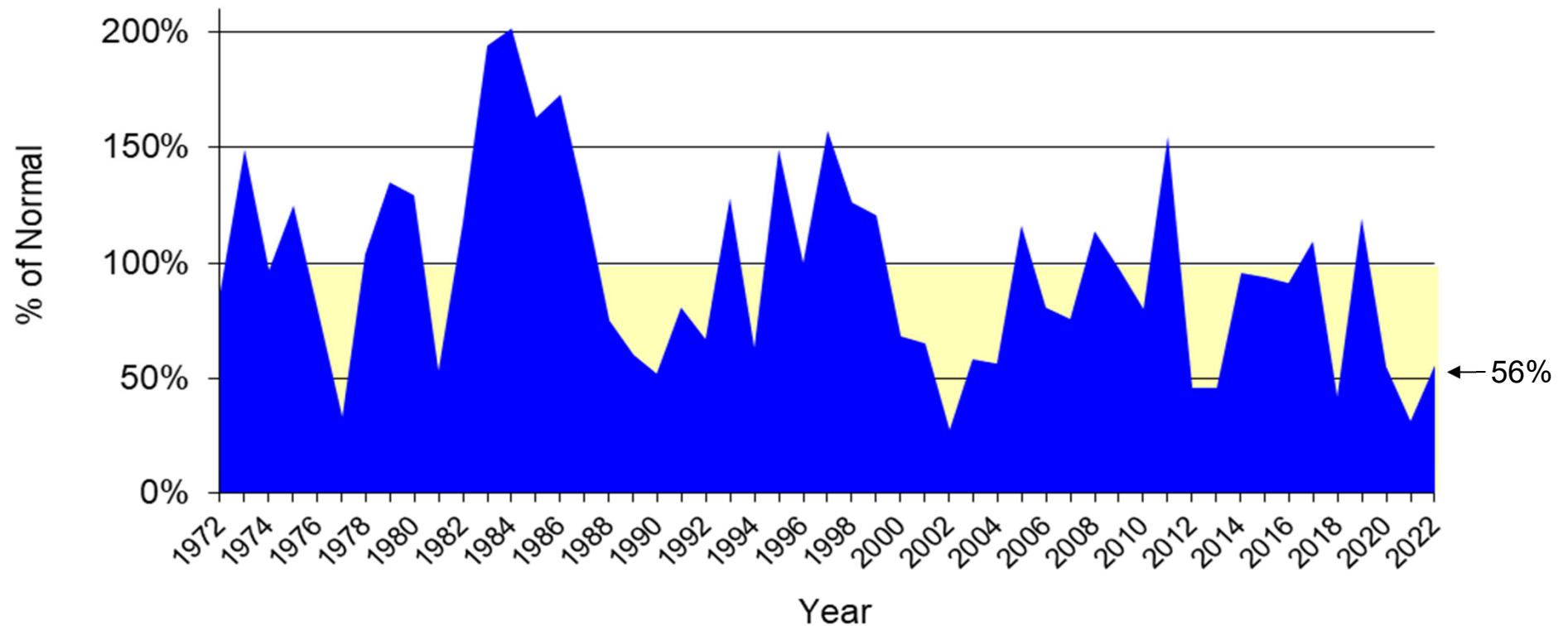
Water Year Precipitation to Date
(Average based on 1981 - 2010)



September 22, 2022



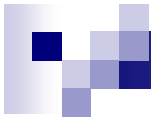
Lake Powell Annual Unregulated Inflow



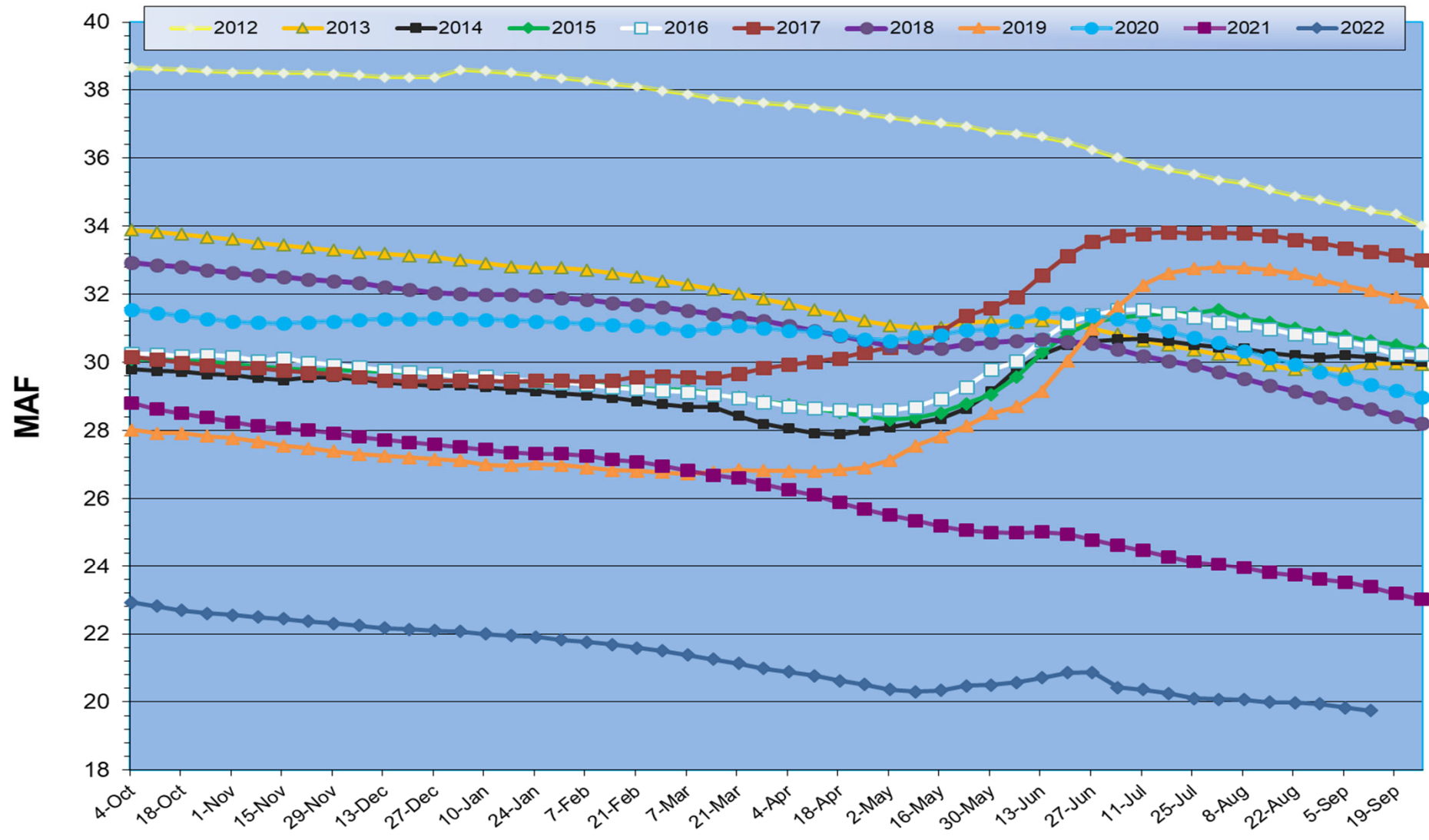
Normal = 10.8575 MAF

1981 to 2010

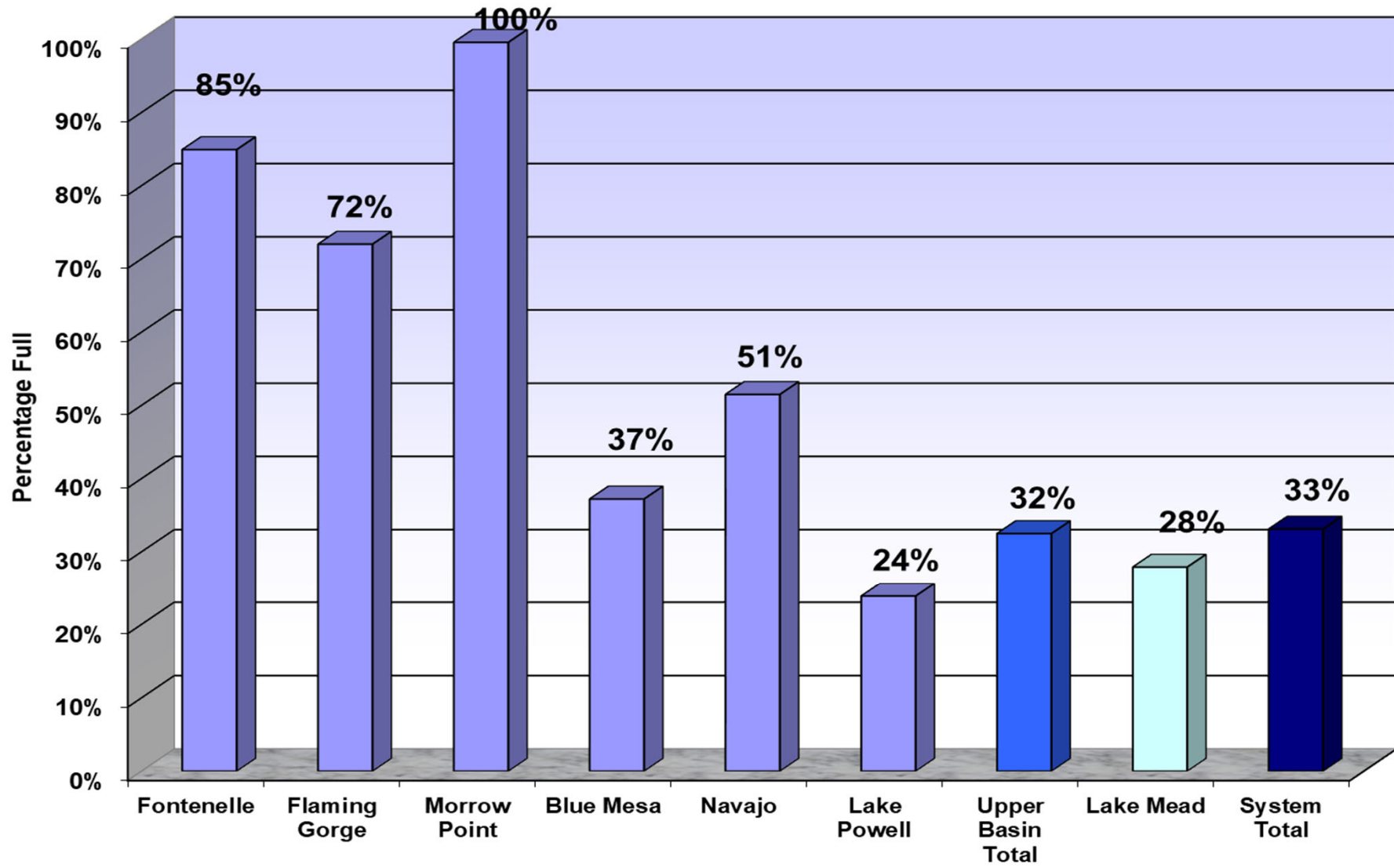
■ % Normal



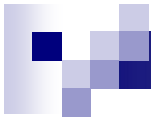
Total System Contents



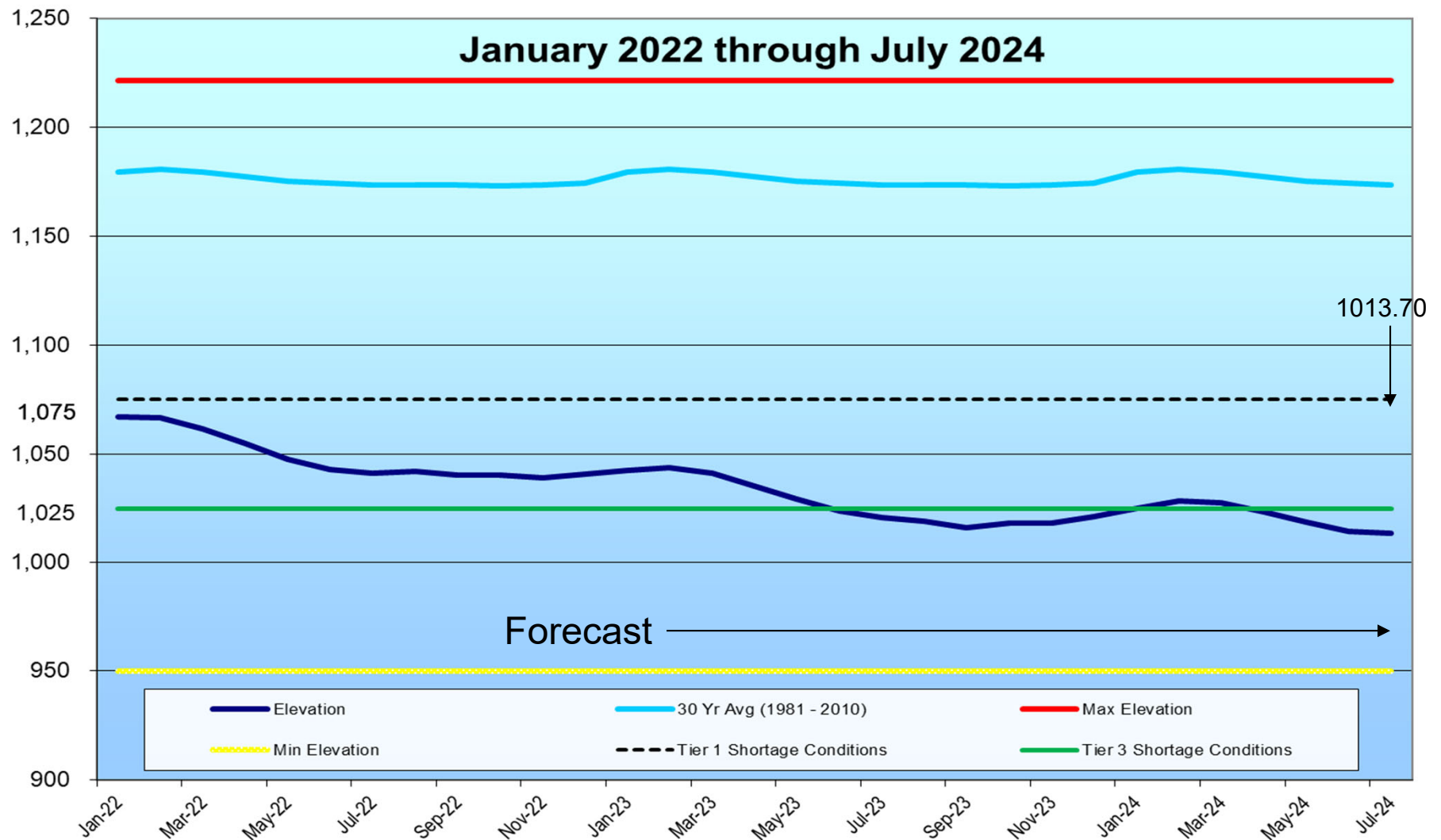
Reservoir and System Capacity as of 09/19/22



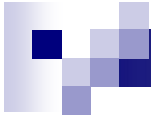
September 22, 2022



Lake Mead Elevation



September 22, 2022



Questions or Comments?
Call Sonseeahray Thayer at:
602-368-4265

For a copy of this report, go to the Power Authority website
at: <http://www.powerauthority.org/>
and click on downloads.