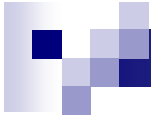


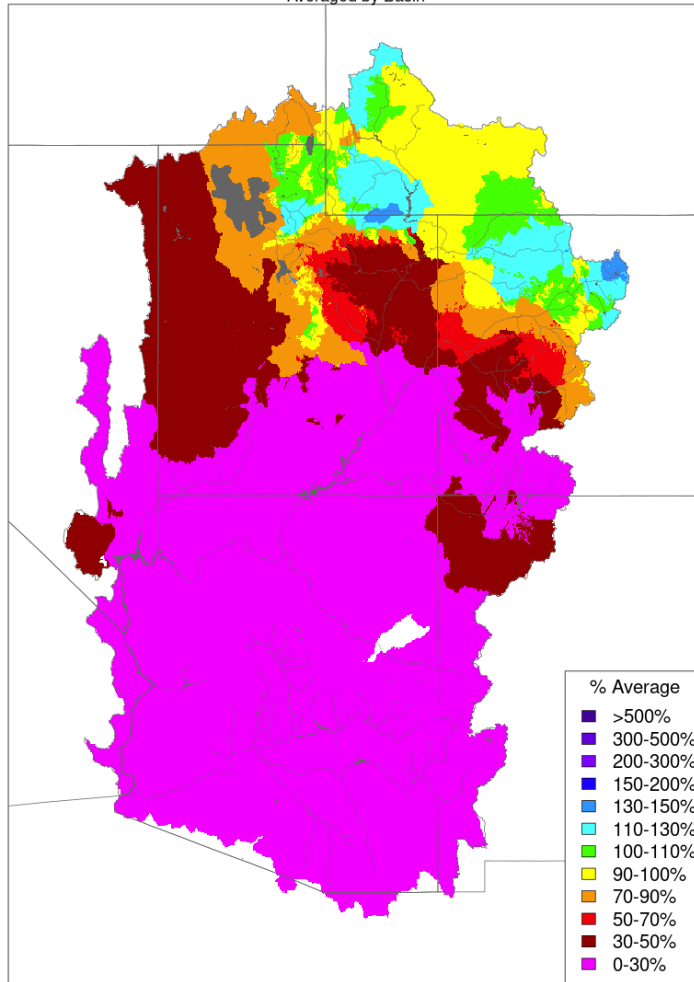
Operations Report

June 21, 2022



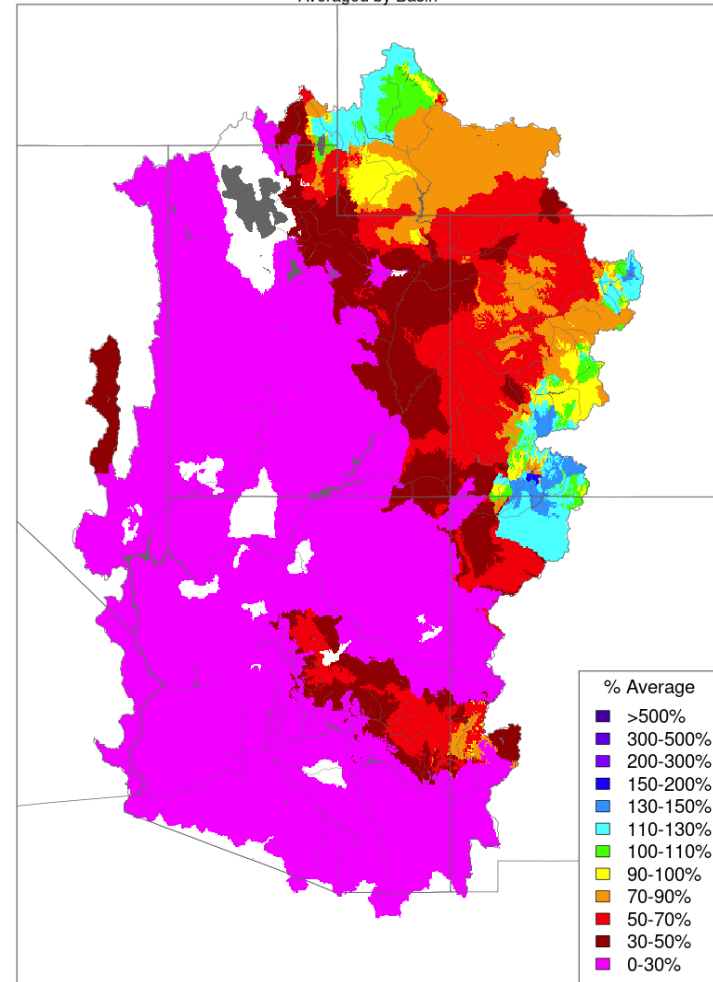
Monthly Precipitation

Monthly Precipitation - May 2022
Averaged by Basin

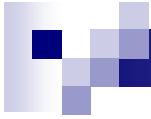


Prepared by NOAA, Colorado Basin River Forecast Center
Salt Lake City, Utah, www.cbrfc.noaa.gov

Monthly Precipitation - May 2021
Averaged by Basin



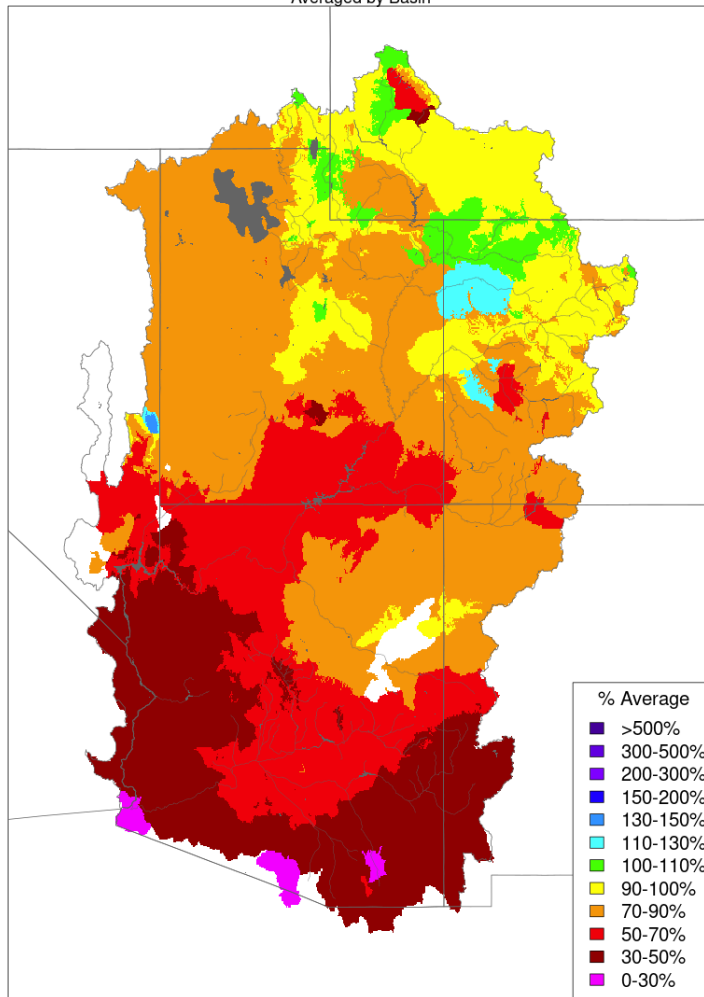
Prepared by NOAA, Colorado Basin River Forecast Center
Salt Lake City, Utah, www.cbrfc.noaa.gov



Water Year Precipitation

Water Year to Date Precipitation, October 01 - May 31 2022

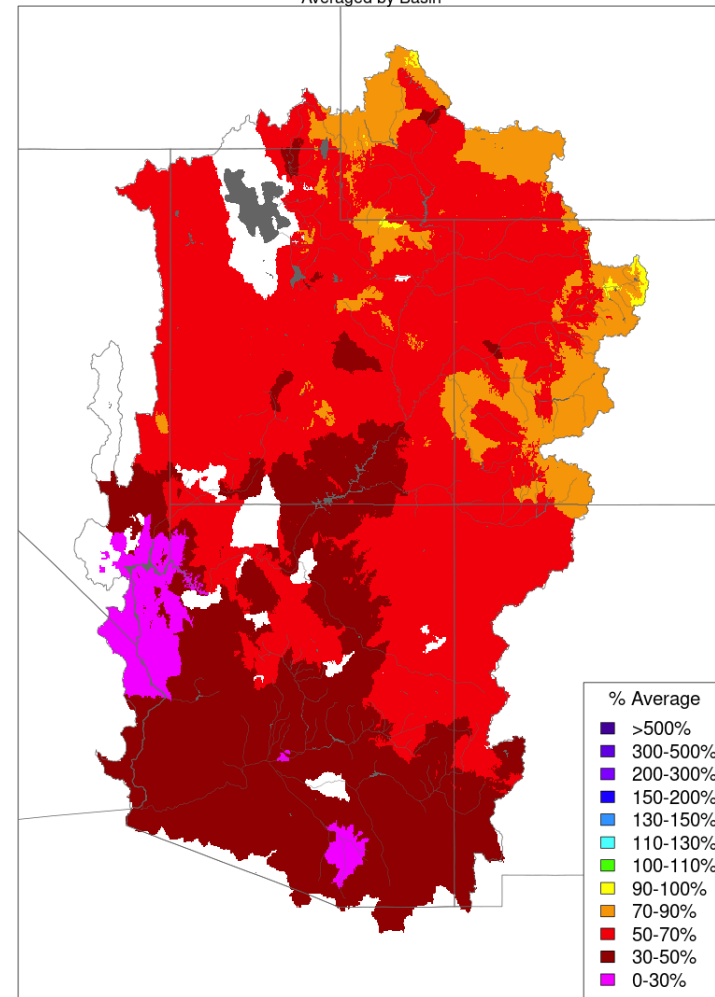
Averaged by Basin



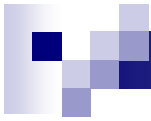
Prepared by NOAA, Colorado Basin River Forecast Center
Salt Lake City, Utah, www.cbrfc.noaa.gov

Seasonal to Date Precipitation, October 01 - May 31 2021

Averaged by Basin

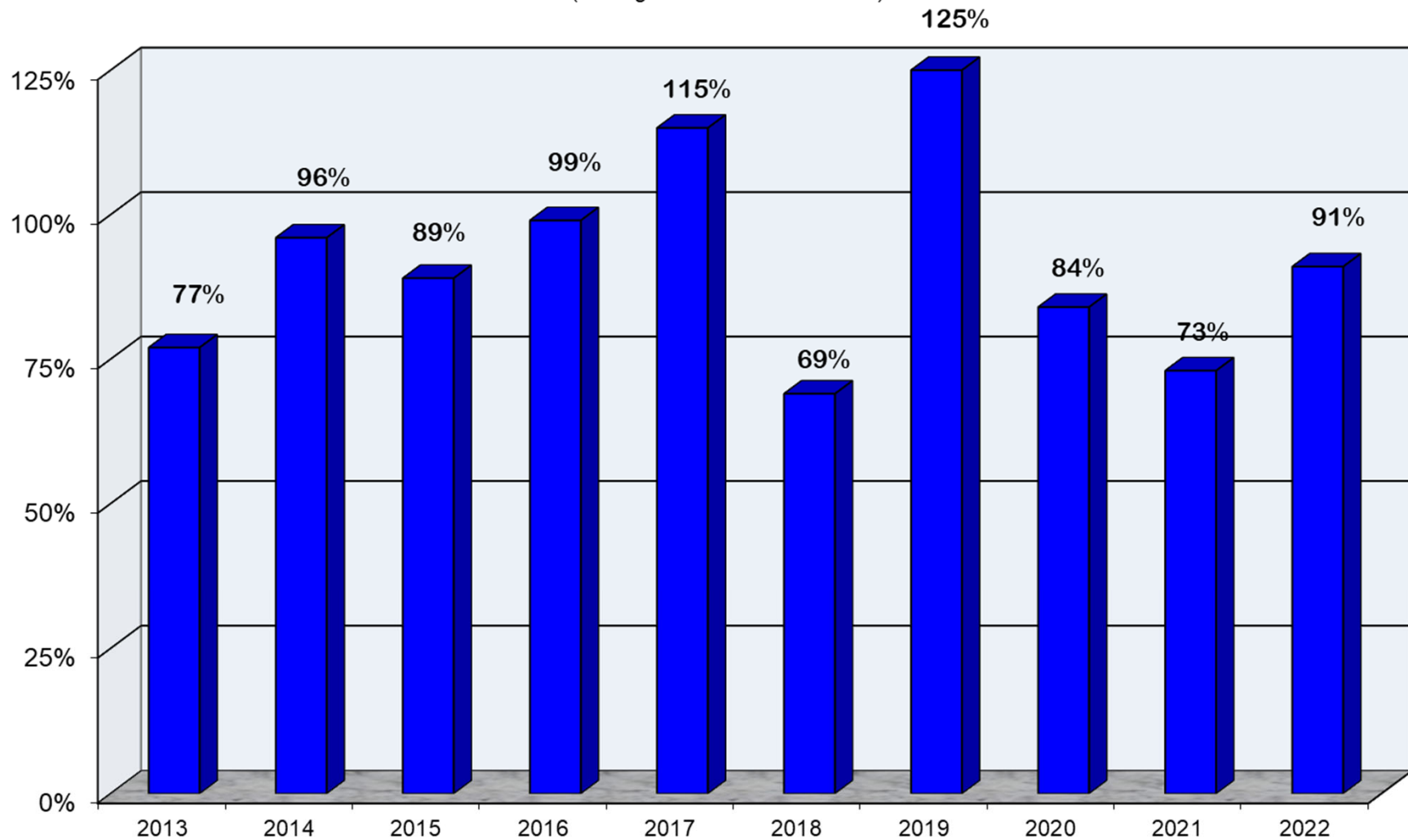


Prepared by NOAA, Colorado Basin River Forecast Center
Salt Lake City, Utah, www.cbrfc.noaa.gov



Upper Colorado River System

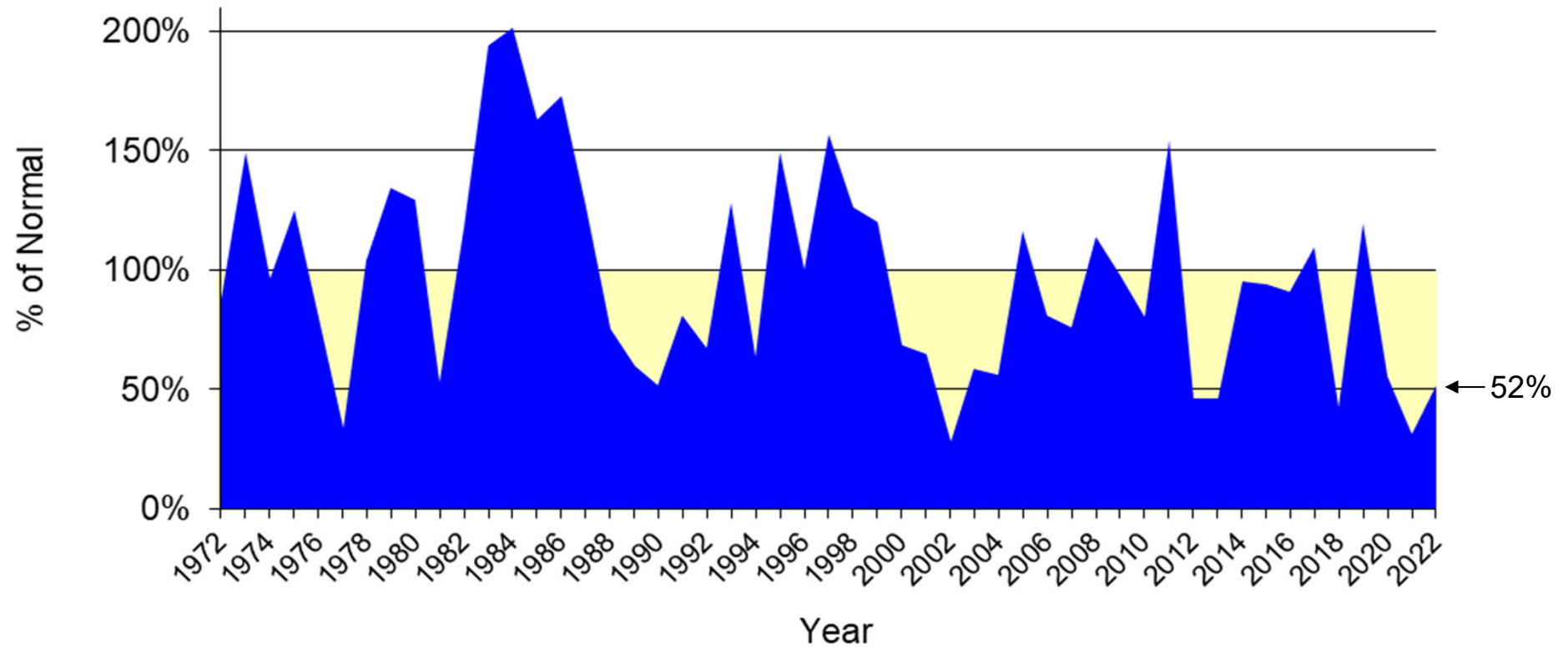
Water Year Precipitation to Date
(Average based on 1981 - 2010)



June 21, 2022



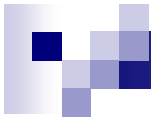
Lake Powell Annual Unregulated Inflow



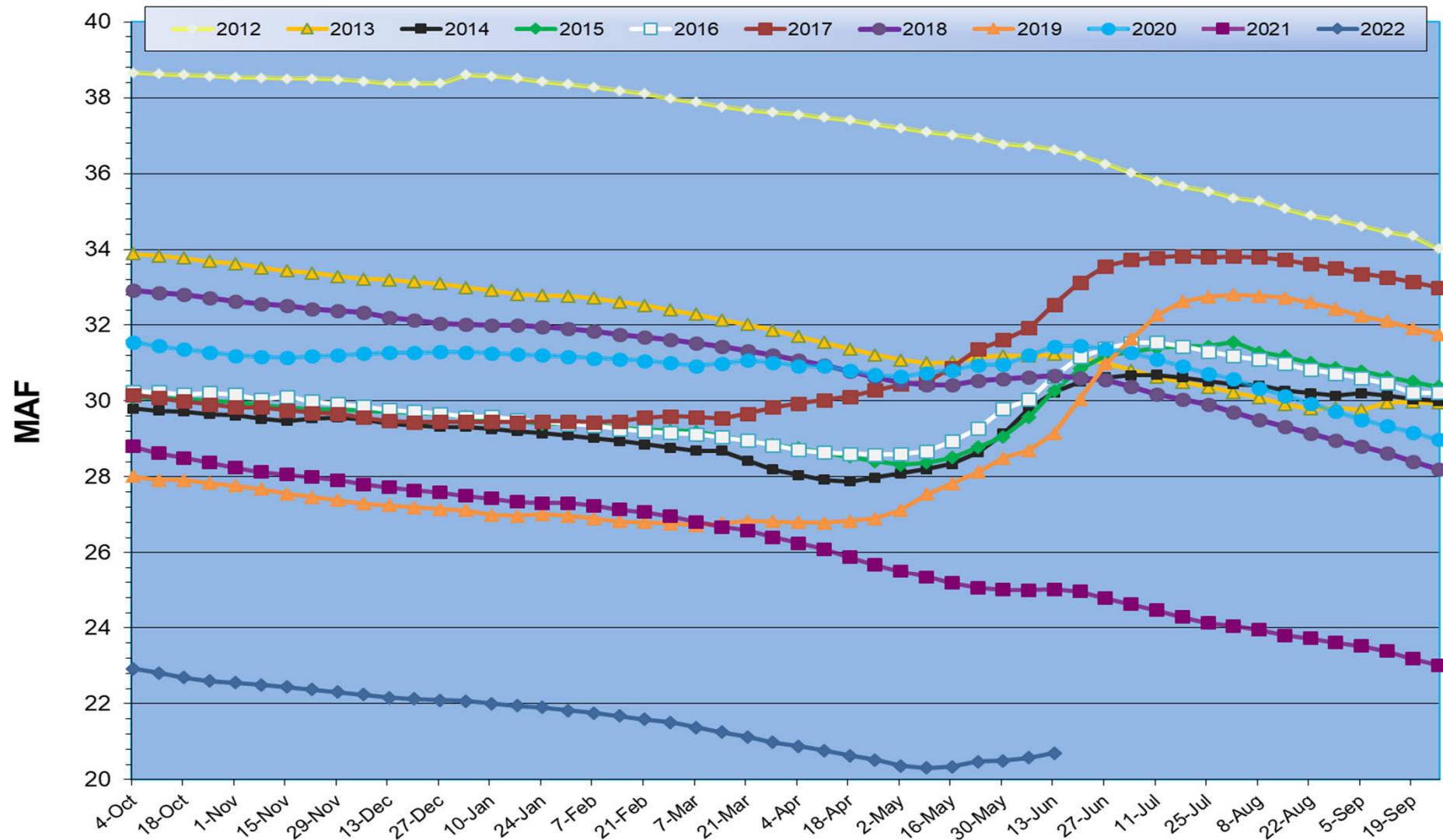
Normal = 10.8575 MAF

1981 to 2010

■ % Normal

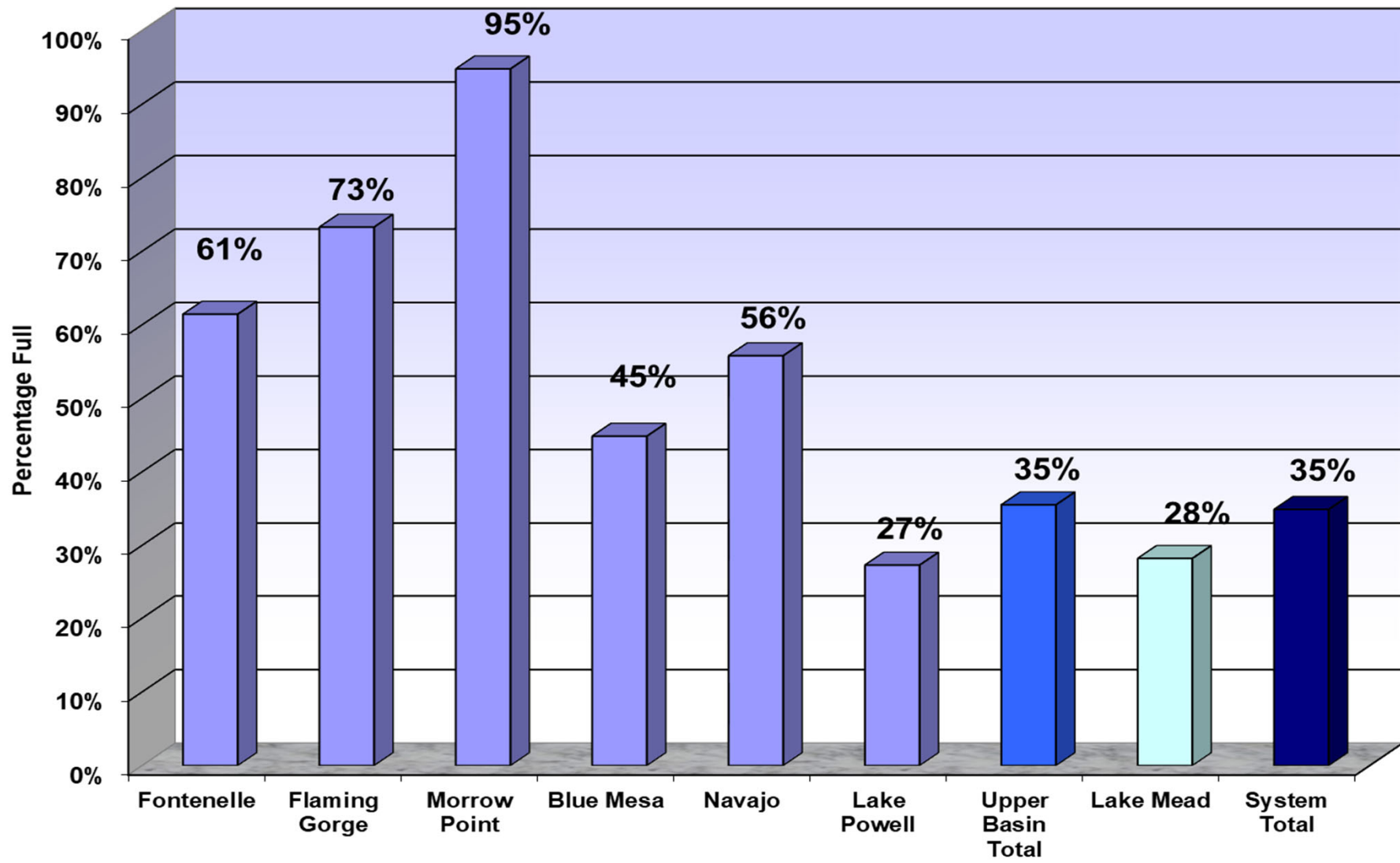


Total System Contents

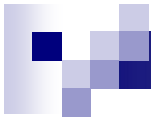


June 21, 2022

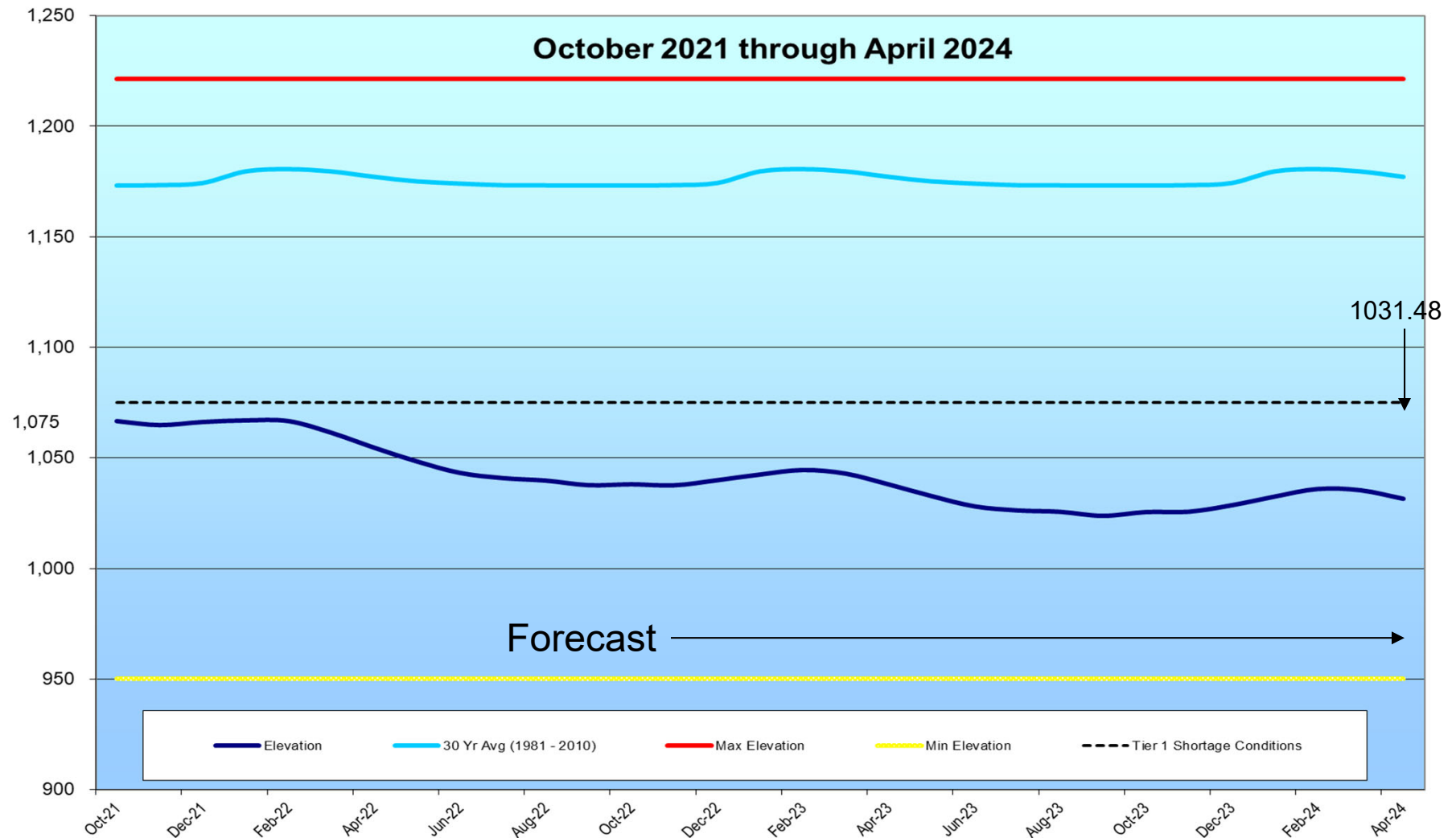
Reservoir and System Capacity as of 06/13/22



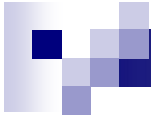
June 21, 2022



Lake Mead Elevation



June 21, 2022



Questions or Comments?
Call Sonseeahray Thayer at:
602-368-4265

For a copy of this report, go to the Power Authority website
at: <http://www.powerauthority.org/>
and click on downloads.