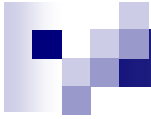




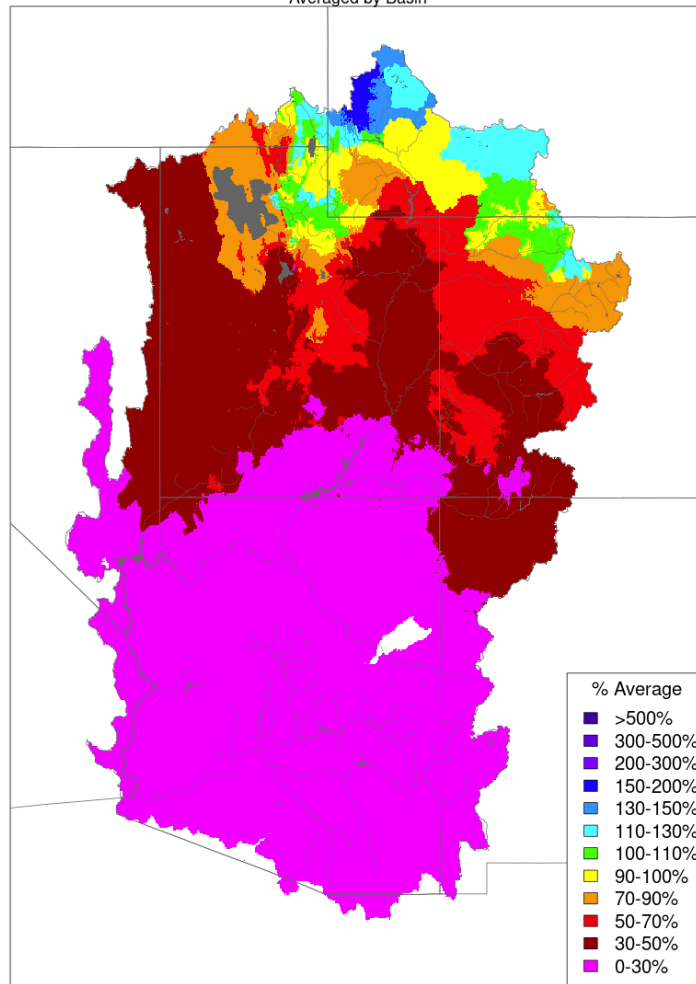
# Operations Report

May 17, 2022



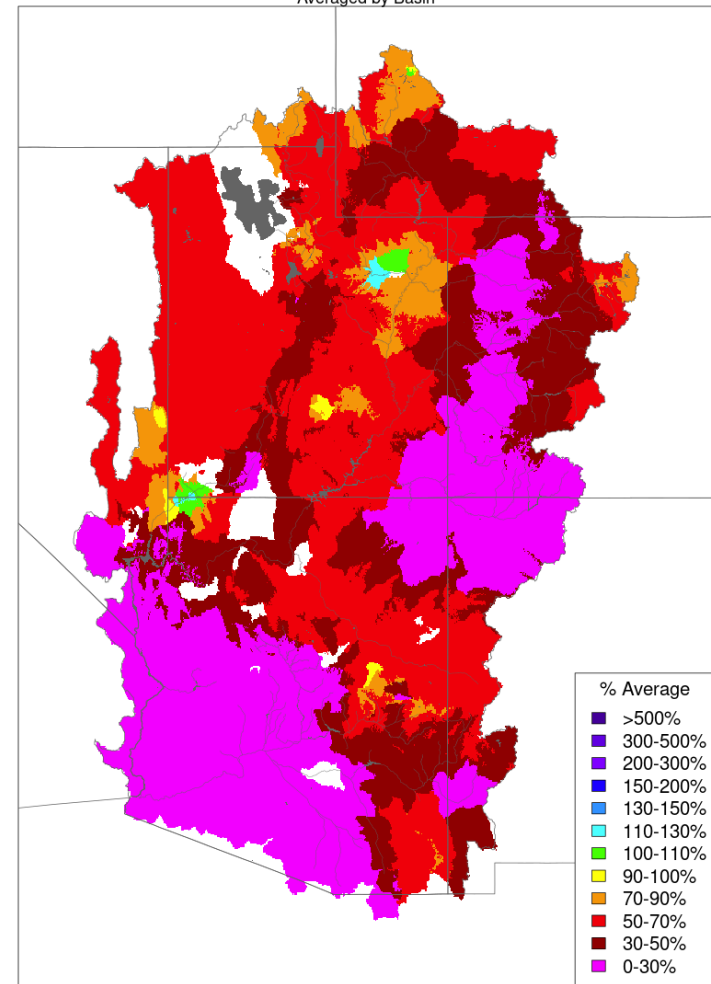
# Monthly Precipitation

Monthly Precipitation - April 2022  
Averaged by Basin

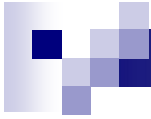


Prepared by NOAA, Colorado Basin River Forecast Center  
Salt Lake City, Utah, [www.cbrfc.noaa.gov](http://www.cbrfc.noaa.gov)

Monthly Precipitation - April 2021  
Averaged by Basin



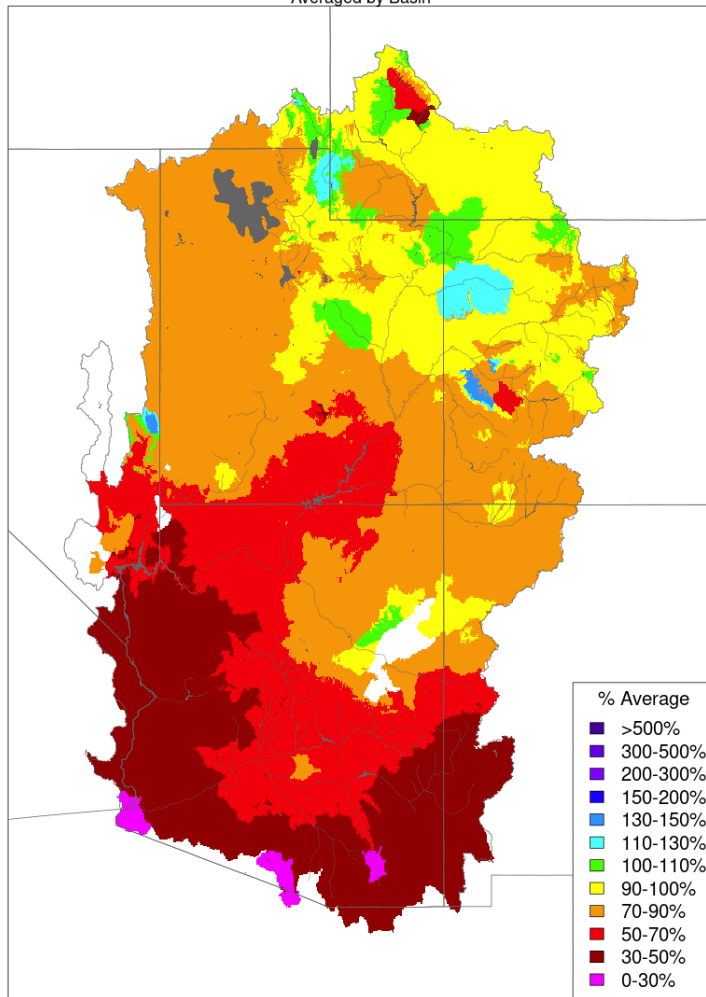
Prepared by NOAA, Colorado Basin River Forecast Center  
Salt Lake City, Utah, [www.cbrfc.noaa.gov](http://www.cbrfc.noaa.gov)



# Water Year Precipitation

Water Year to Date Precipitation, October 01 - April 30 2022

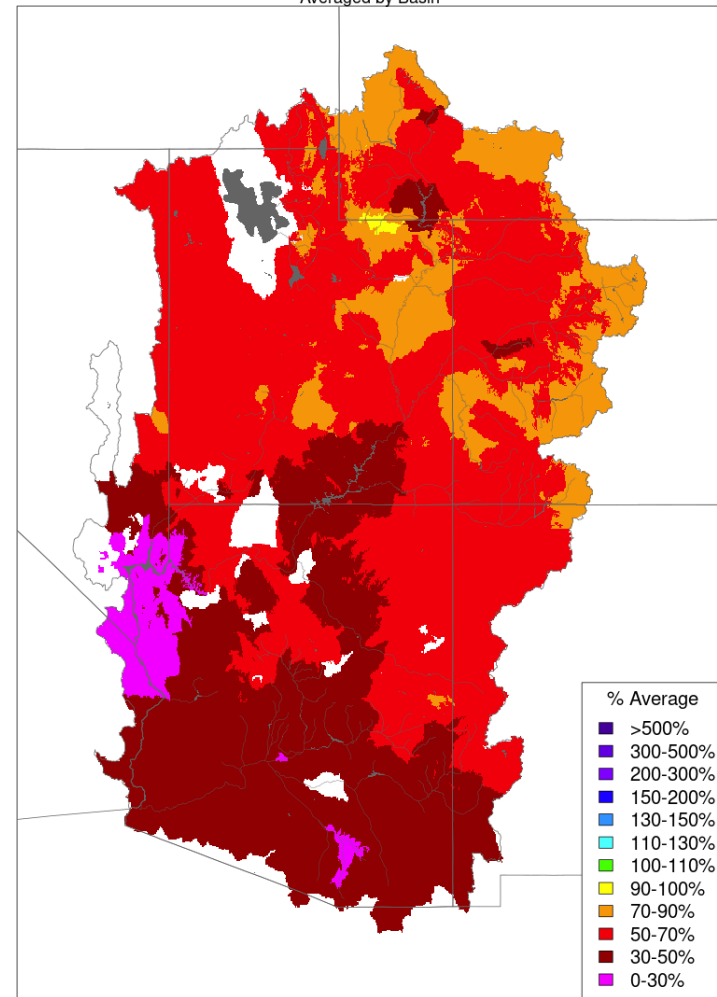
Averaged by Basin



Prepared by NOAA, Colorado Basin River Forecast Center  
Salt Lake City, Utah, [www.cbrfc.noaa.gov](http://www.cbrfc.noaa.gov)

Seasonal to Date Precipitation, October 01 - April 30 2021

Averaged by Basin

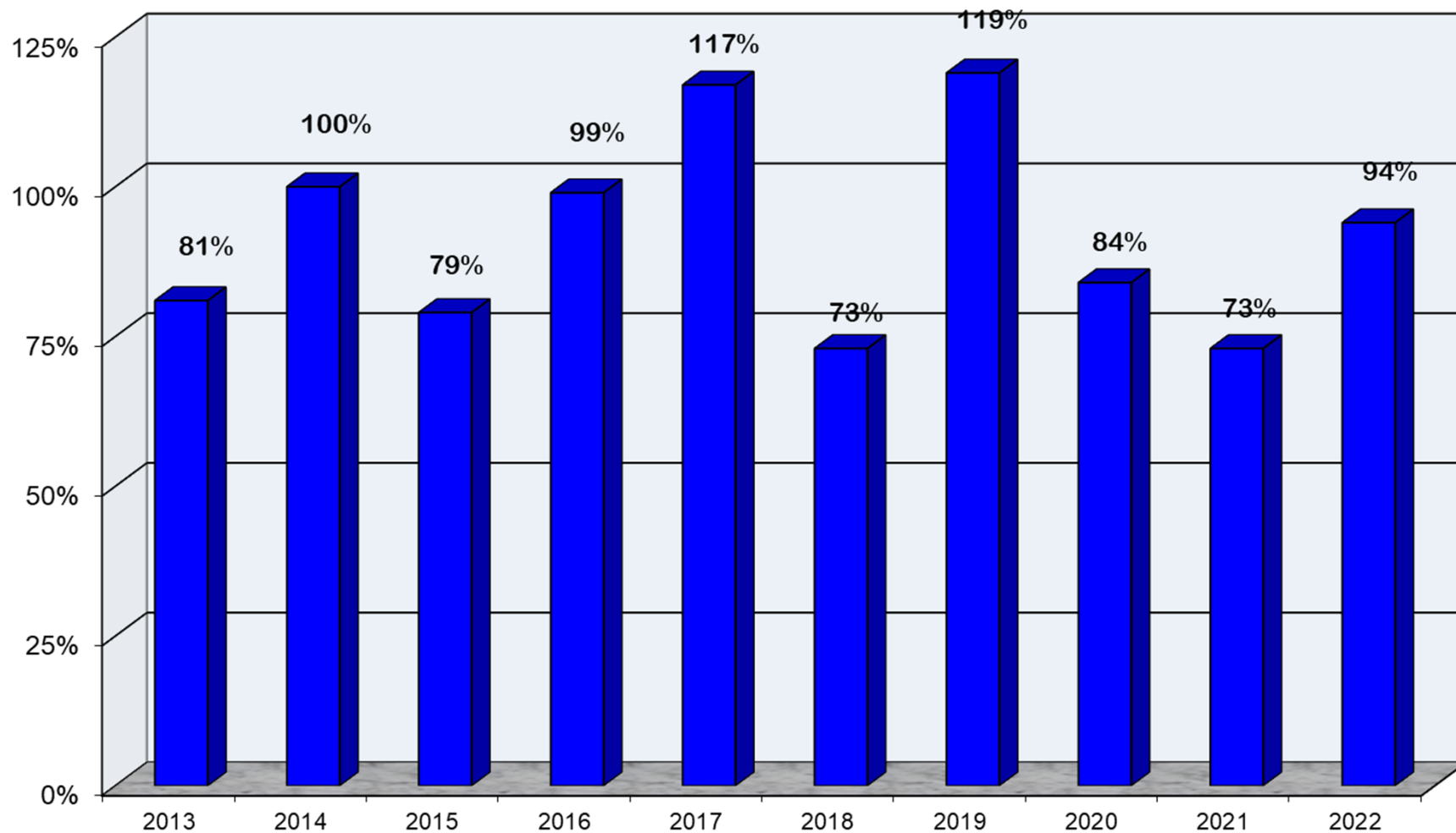


Prepared by NOAA, Colorado Basin River Forecast Center  
Salt Lake City, Utah, [www.cbrfc.noaa.gov](http://www.cbrfc.noaa.gov)



# Upper Colorado River System

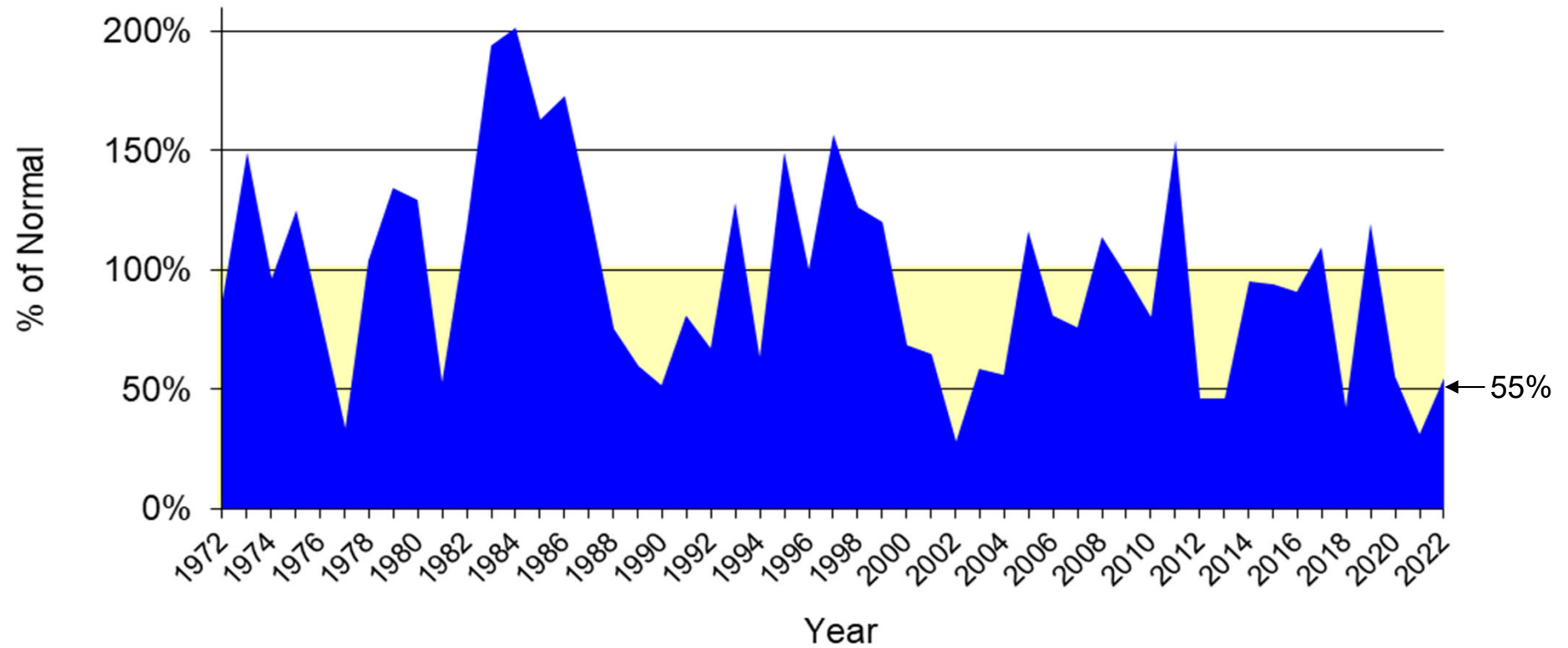
Water Year Precipitation to Date  
(Average based on 1981 - 2010)



May 17, 2022



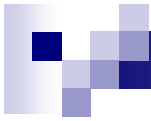
## Lake Powell Annual Unregulated Inflow



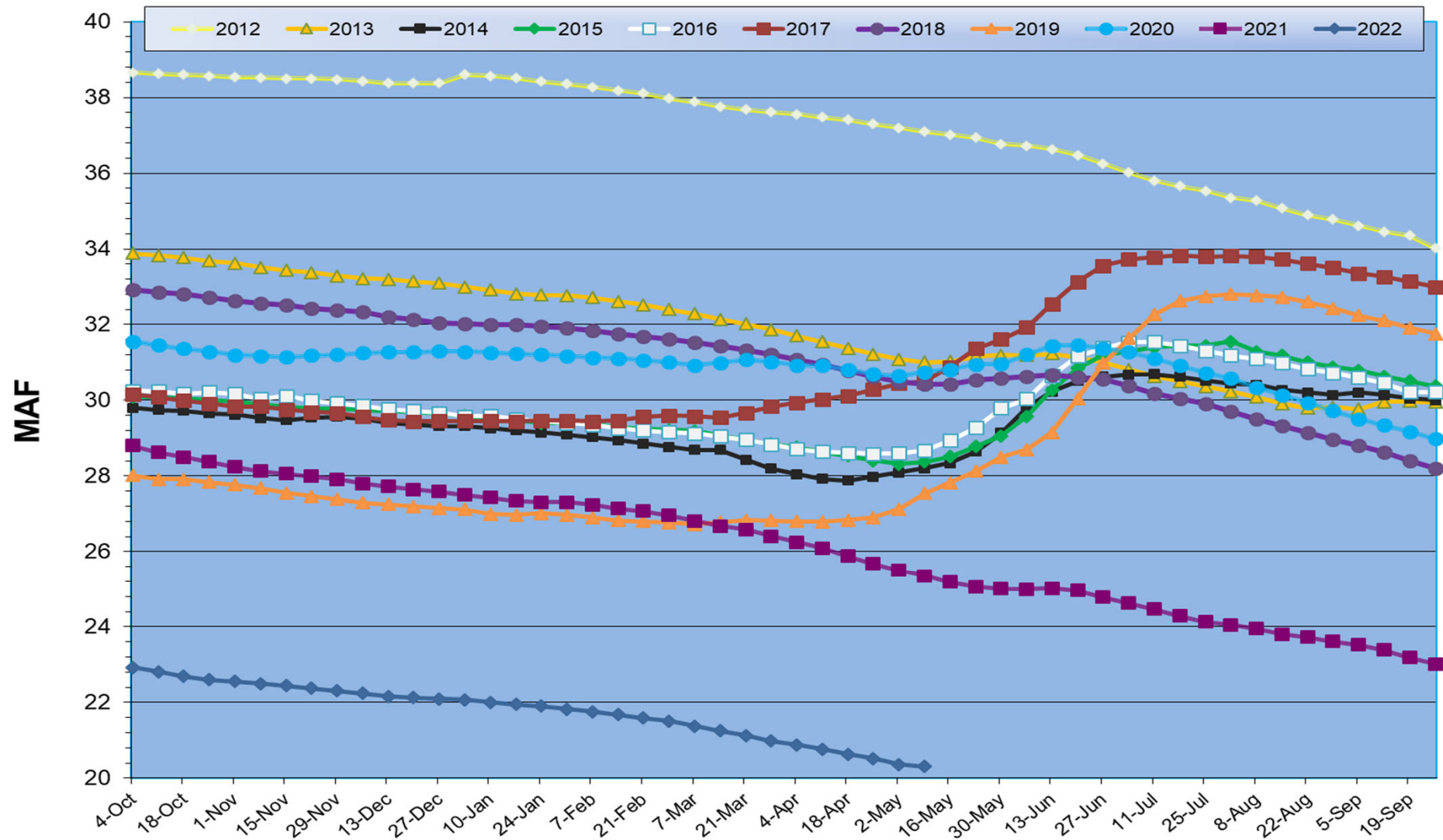
Normal = 10.8575 MAF

1981 to 2010

■ % Normal

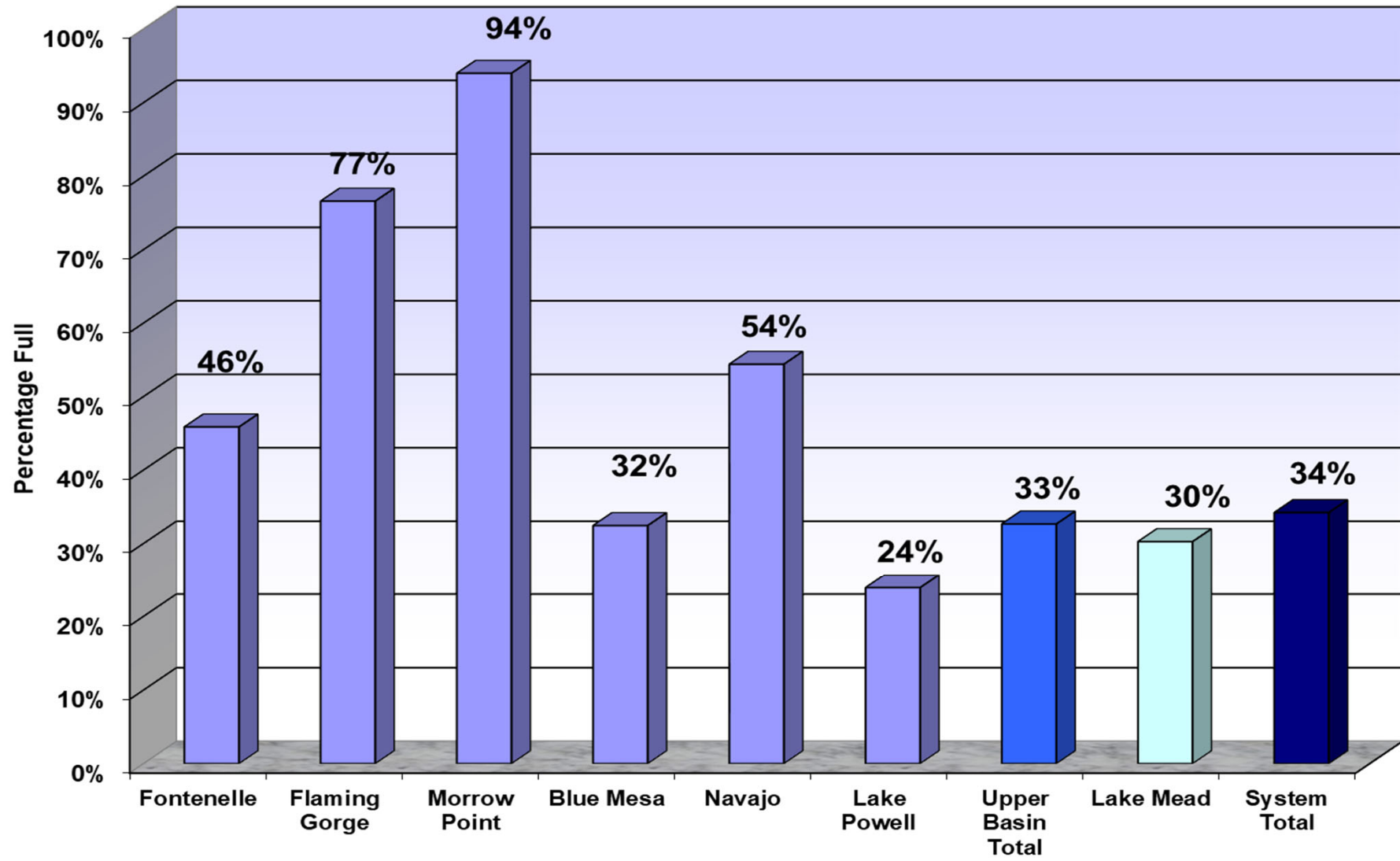


# Total System Contents

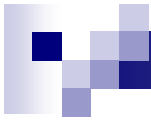


May 17, 2022

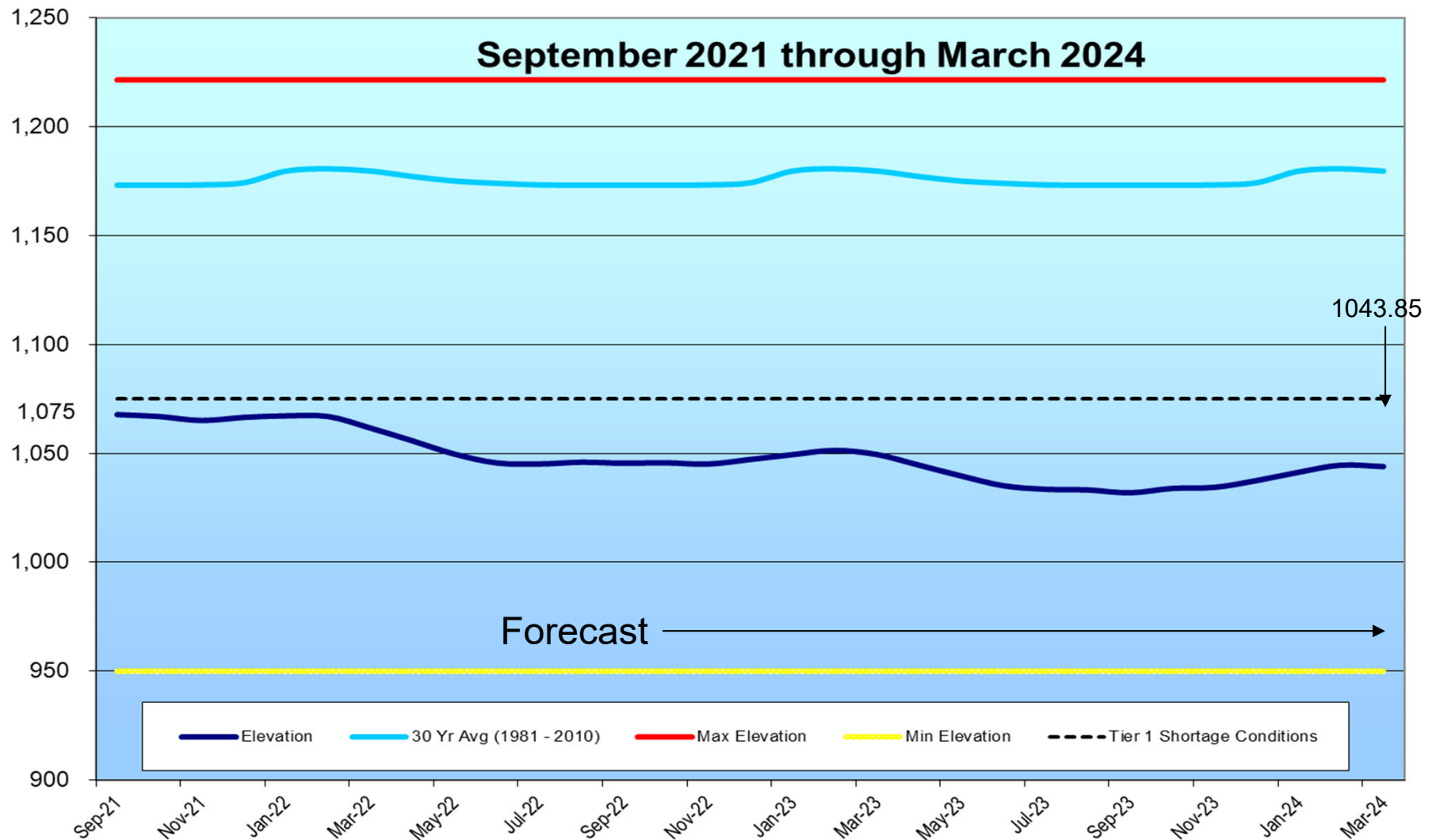
## Reservoir and System Capacity as of 05/09/22



May 17, 2022



# Lake Mead Elevation



May 17, 2022





Questions or Comments?  
Call Sonseeahray Thayer at:  
602-368-4265

For a copy of this report, go to the Power Authority website  
at: <http://www.powerauthority.org/>  
and click on downloads.