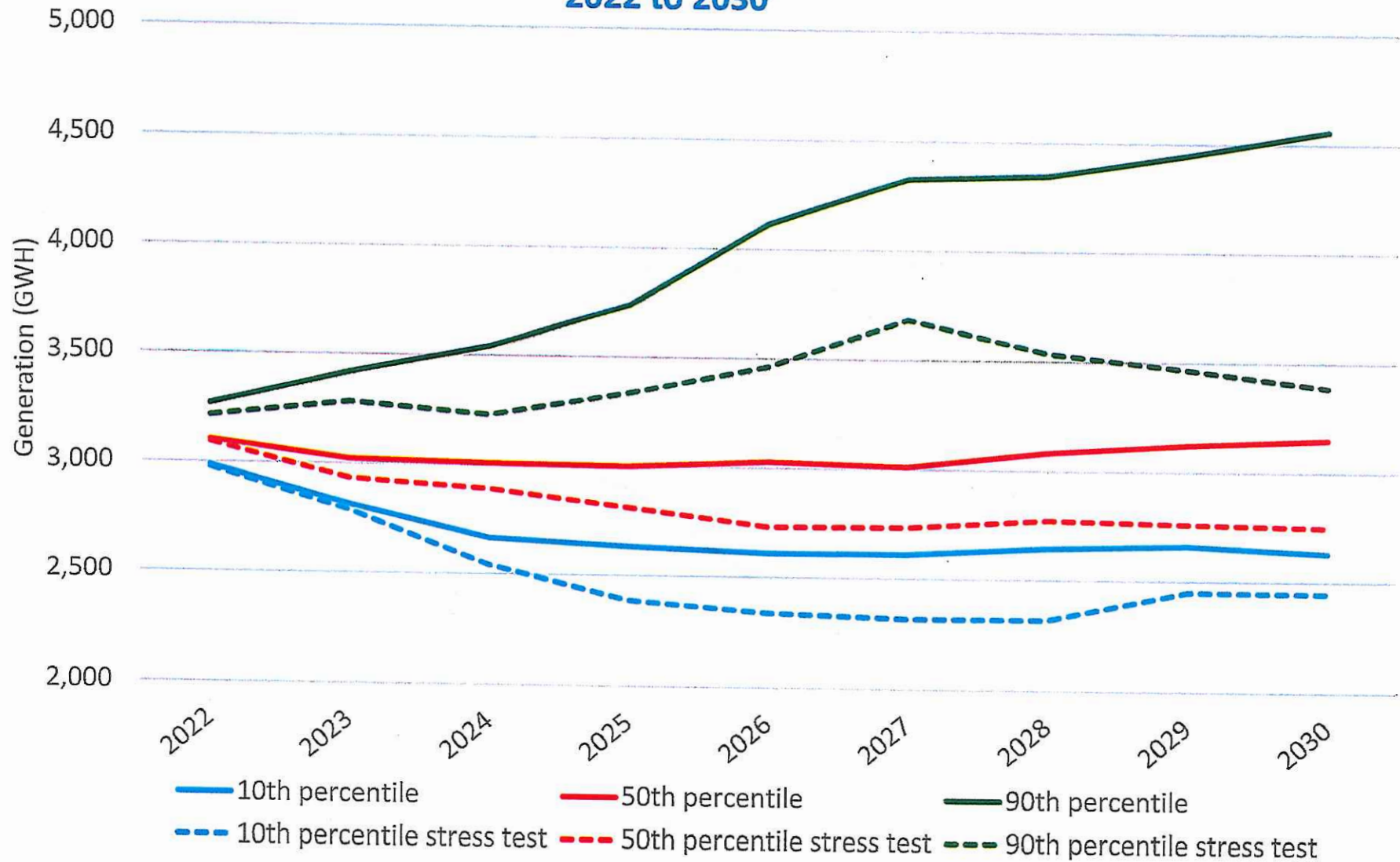


# Hoover Generation - Full Hydrology vs. Stress Test

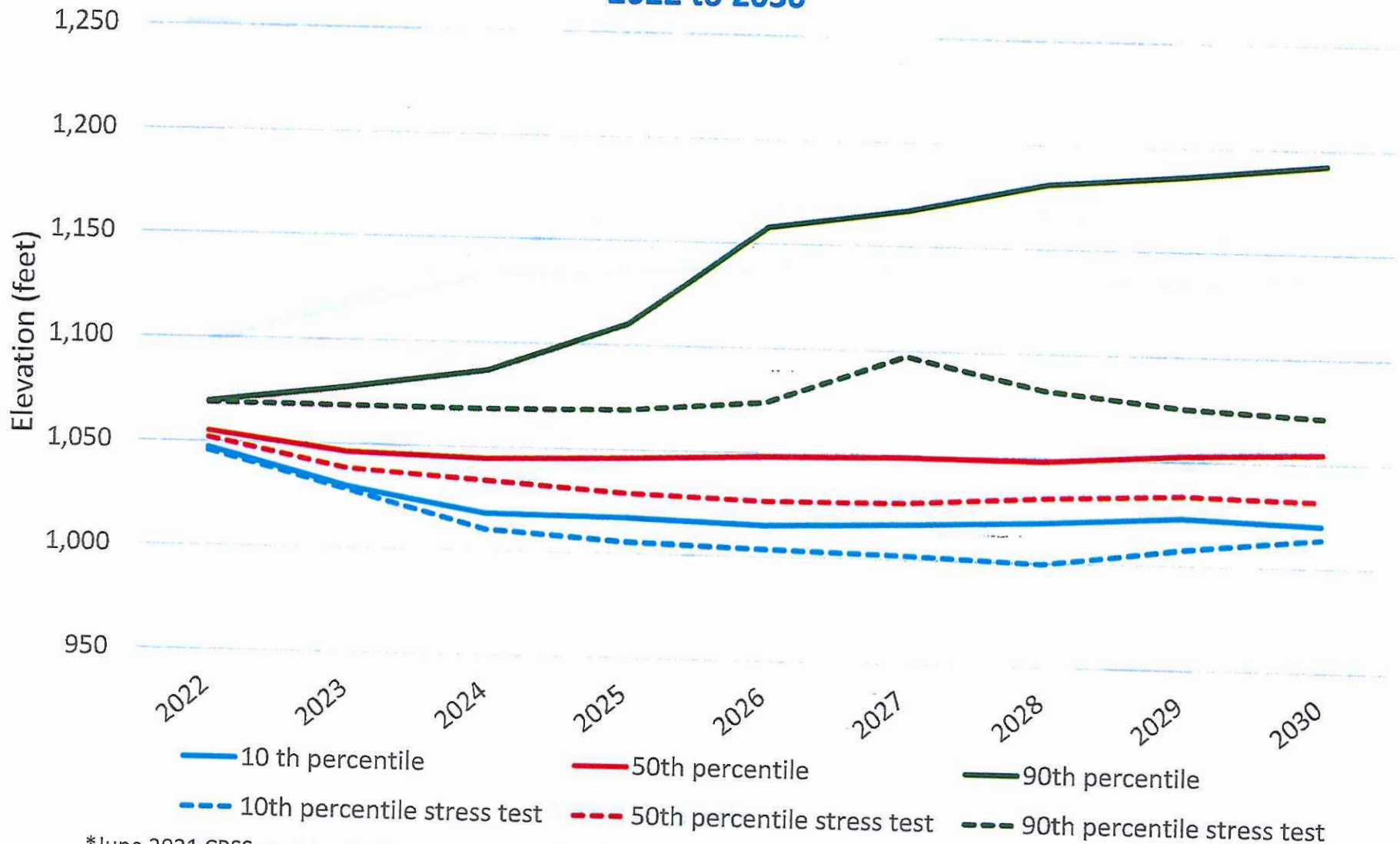
## 2022 to 2030



\*June 2011 CRSS

# Mead Elevation Full Hydrology v. Stress Test

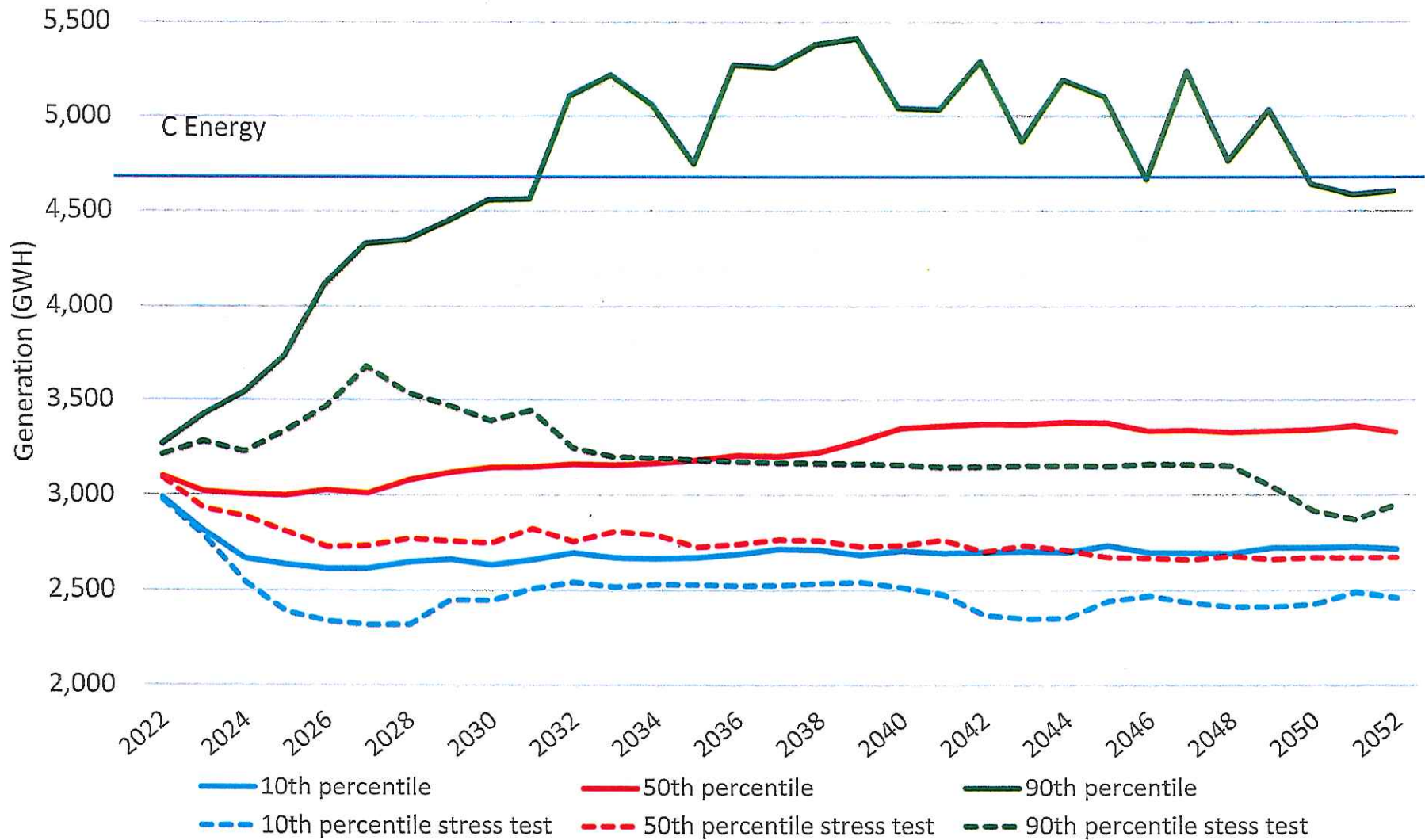
2022 to 2030



\*June 2021 CRSS

# Hoover Generation - Full Hydrology vs. Stress Test

## 2022 to 2052

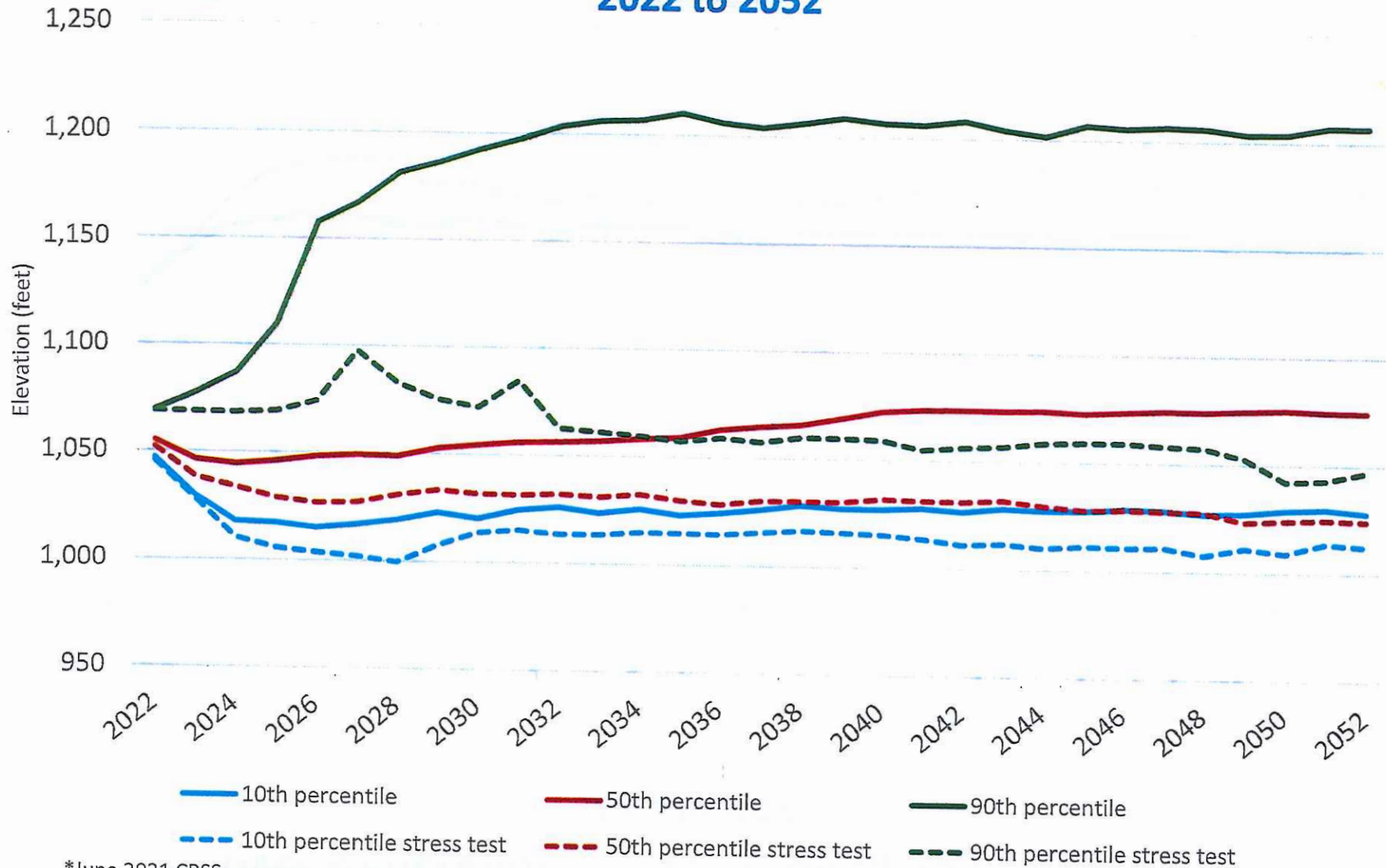


\*June 2021 CRSS

C Energy is excess generation over 4,527,001 MWH

# Mead Elevation - Full Hydrology vs. Stress Test

## 2022 to 2052





**Forecast at 10th, 50th and 90th Percentiles  
Stress Test Hydrology\* (1988-2019 Record)**

**Lake Mead Elevation**

		2023	2024	2025	2026	2027	2028	2029	2030	
10%		1,028	1,010	1,006	1,004	1,002	999	1,007	1,014	
50%		1,039	1,034	1,029	1,027	1,028	1,031	1,034	1,032	
90%		1,069	1,068	1,069	1,074	1,098	1,083	1,075	1,072	
<b>Past Rates</b>		<b>Rate Forecast</b>								
	2020	2021	2023	2024	2025	2026	2027	2028	2029	2030
10%			\$ 37.70	\$ 41.96	\$ 45.29	\$ 47.56	\$ 48.40	\$ 48.32	\$ 44.99	\$ 46.07
<b>50%</b>	<b>\$ 29.65</b>	<b>\$ 28.47</b>	<b>\$ 36.03</b>	<b>\$ 37.42</b>	<b>\$ 39.11</b>	<b>\$ 41.32</b>	<b>\$ 41.65</b>	<b>\$ 41.11</b>	<b>\$ 40.45</b>	<b>\$ 41.49</b>
90%			\$ 32.69	\$ 33.99	\$ 33.67	\$ 33.55	\$ 32.13	\$ 33.23	\$ 33.12	\$ 34.52

\*June 2021 CRSS

