

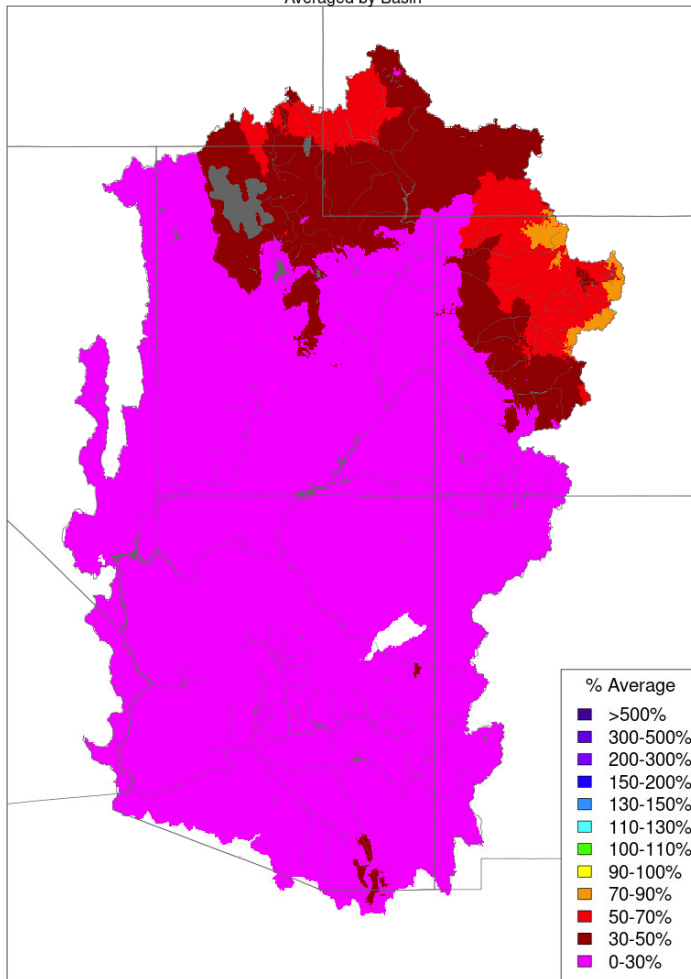


# Operations Report

December 13, 2021

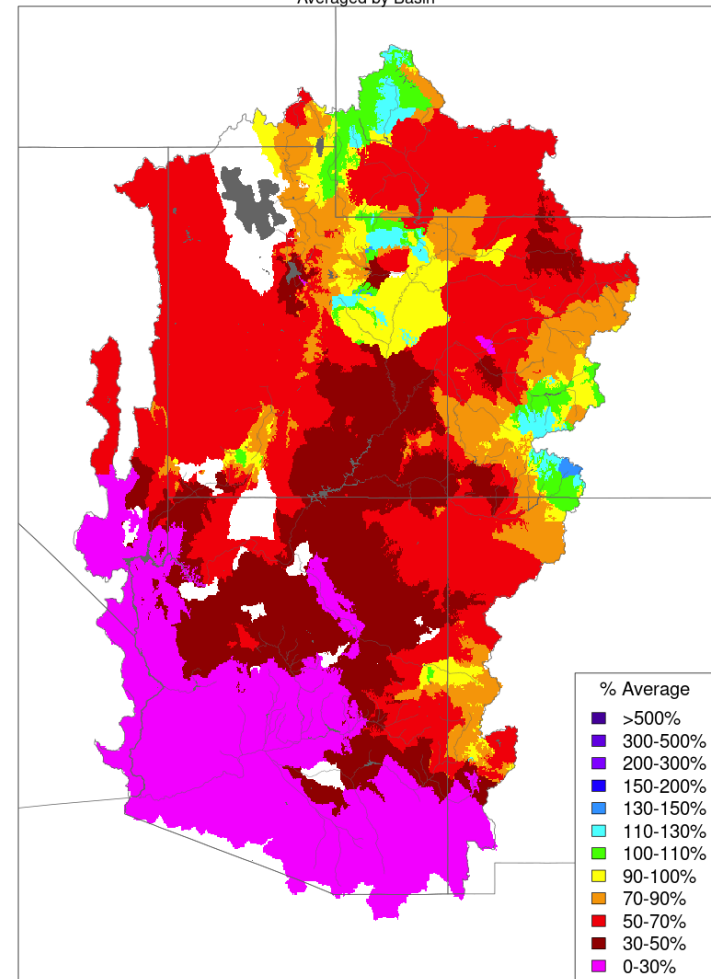
# Monthly Precipitation

Monthly Precipitation - November 2021  
Averaged by Basin



Prepared by NOAA, Colorado Basin River Forecast Center  
Salt Lake City, Utah, [www.cbrfc.noaa.gov](http://www.cbrfc.noaa.gov)

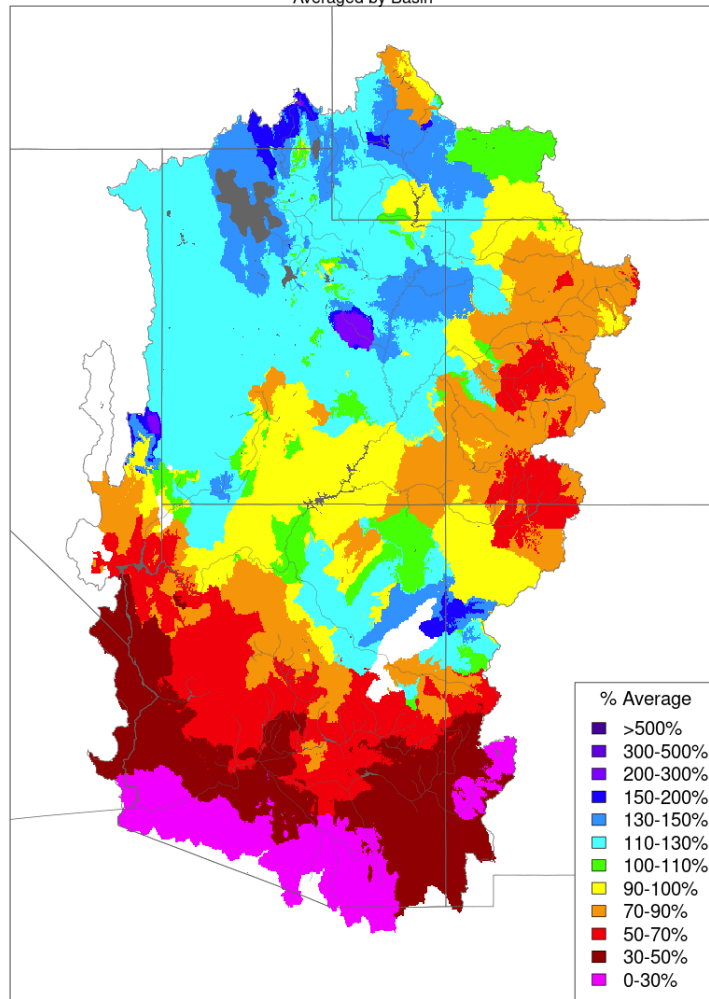
Monthly Precipitation - November 2020  
Averaged by Basin



Prepared by NOAA, Colorado Basin River Forecast Center  
Salt Lake City, Utah, [www.cbrfc.noaa.gov](http://www.cbrfc.noaa.gov)

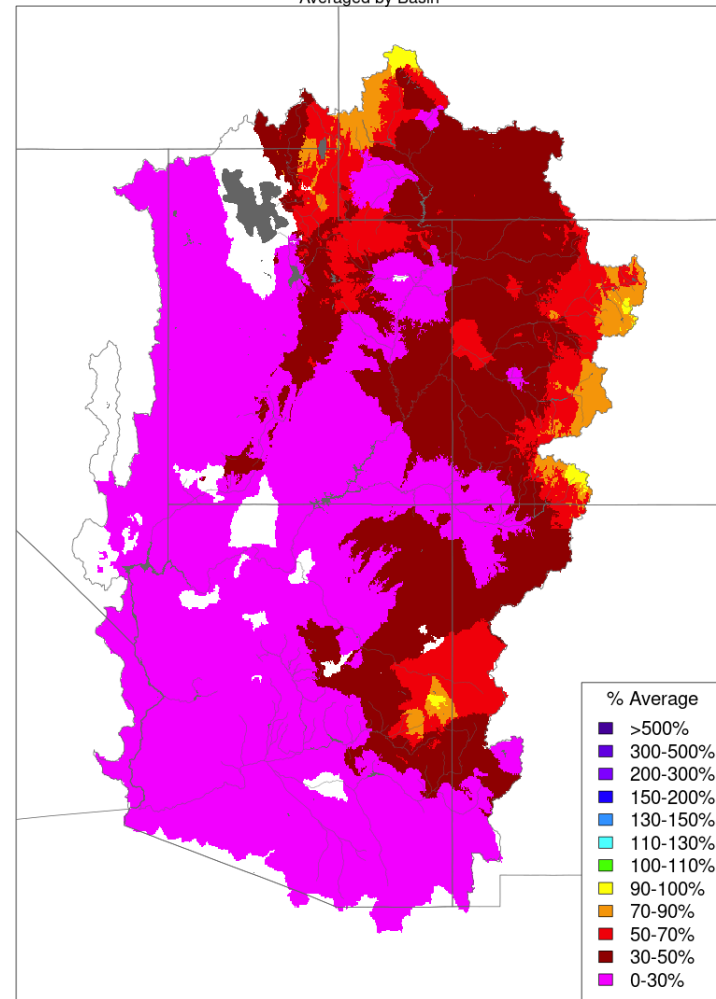
# Seasonal Precipitation

Seasonal to Date Precipitation, October 01 - November 30 2021  
Averaged by Basin



Prepared by NOAA, Colorado Basin River Forecast Center  
Salt Lake City, Utah, [www.cbrfc.noaa.gov](http://www.cbrfc.noaa.gov)

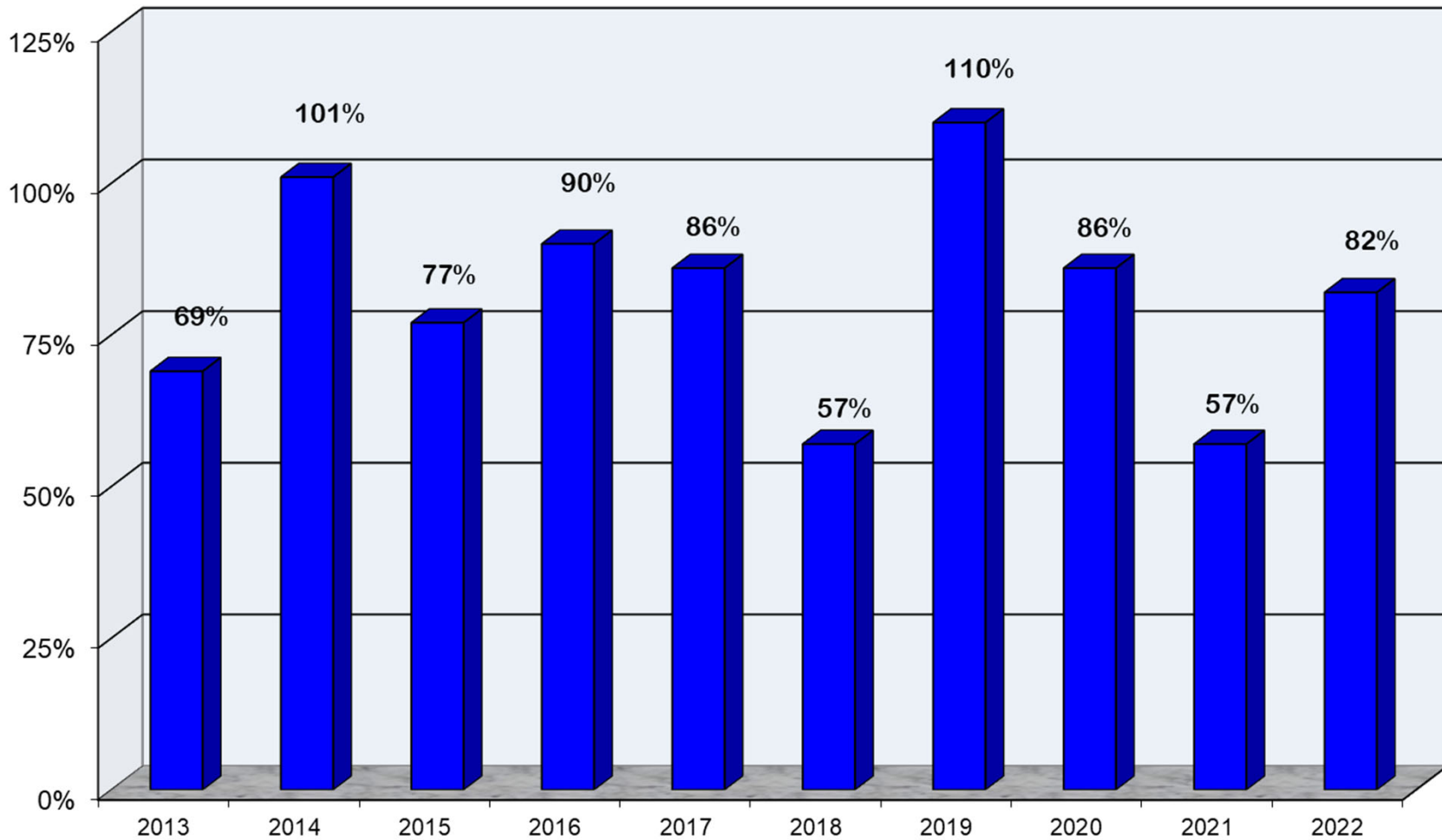
Seasonal to Date Precipitation, October 01 - November 30 2020  
Averaged by Basin



Prepared by NOAA, Colorado Basin River Forecast Center  
Salt Lake City, Utah, [www.cbrfc.noaa.gov](http://www.cbrfc.noaa.gov)

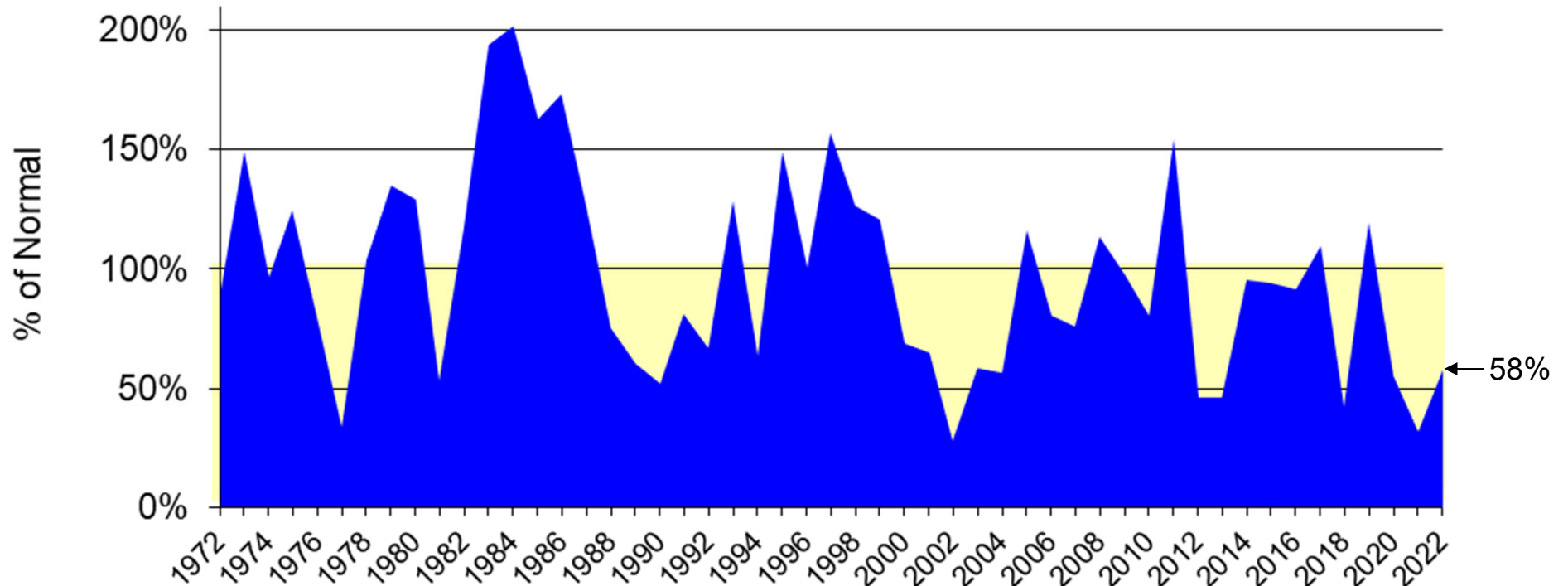
# Upper Colorado River System

Water Year Precipitation to Date  
(Average based on 1981 - 2010)



December 13, 2021

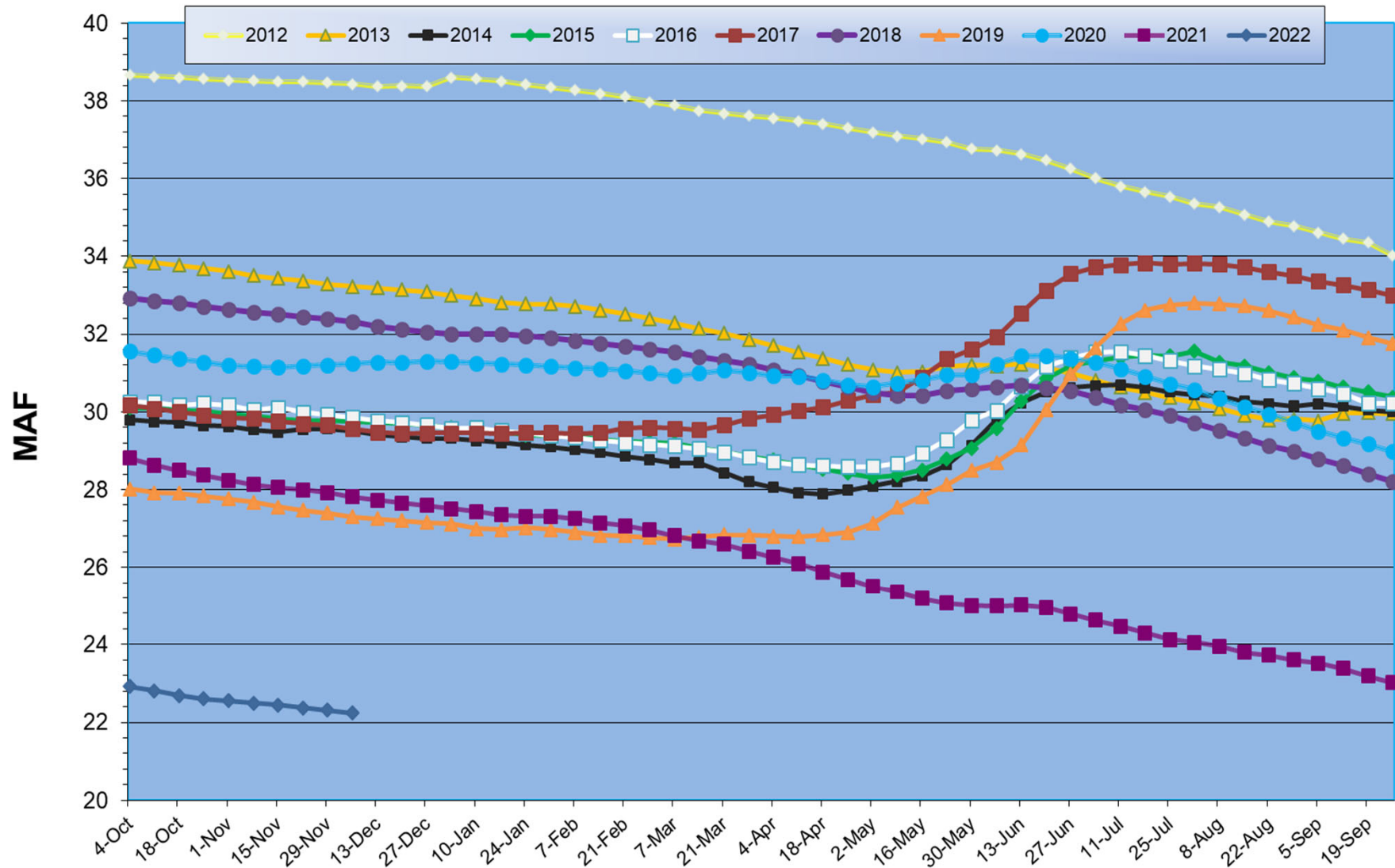
### Lake Powell Annual Unregulated Inflow



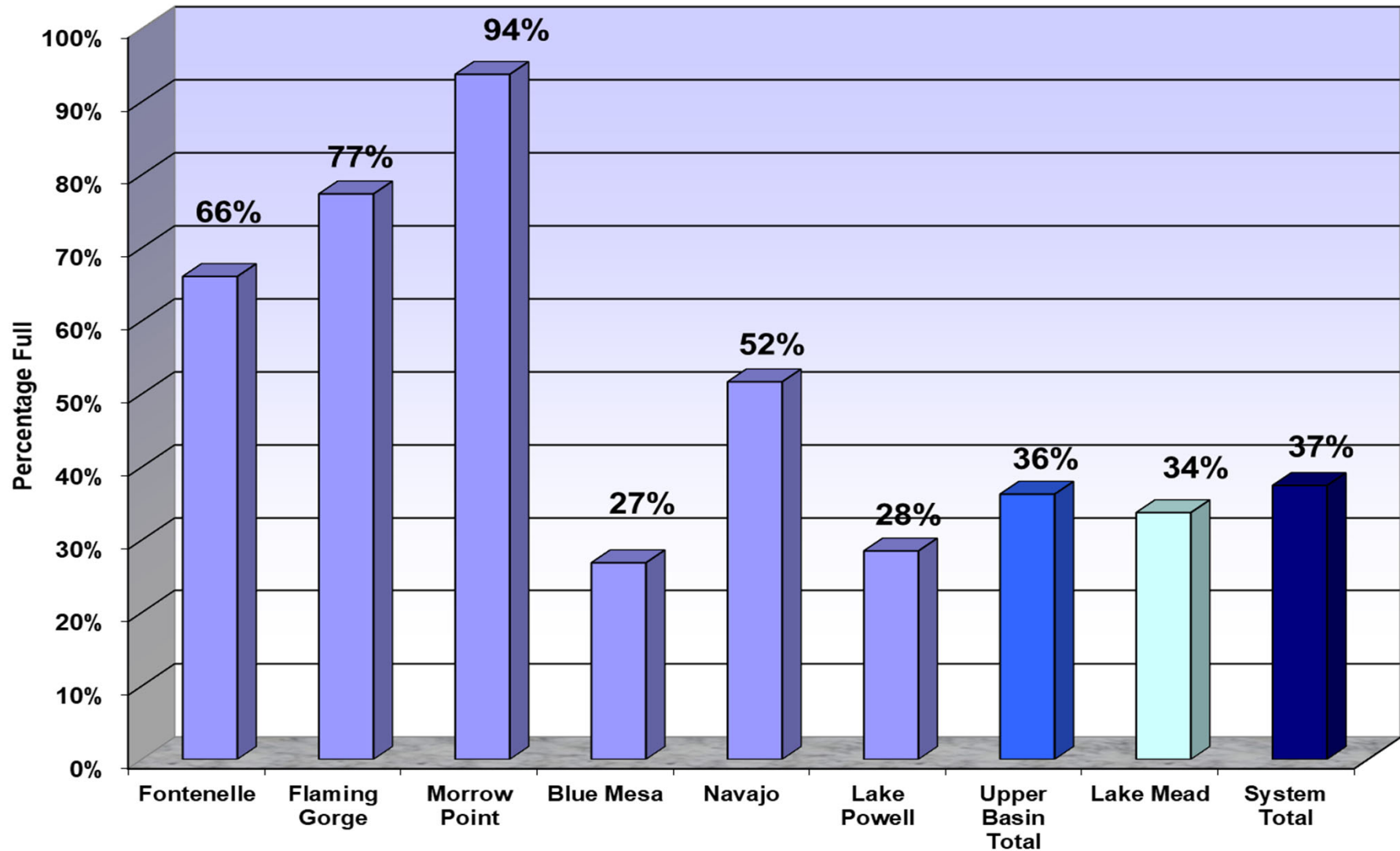
Normal = 10.8575 MAF  
1981 to 2010

Year  
■ % Normal

# Total System Contents

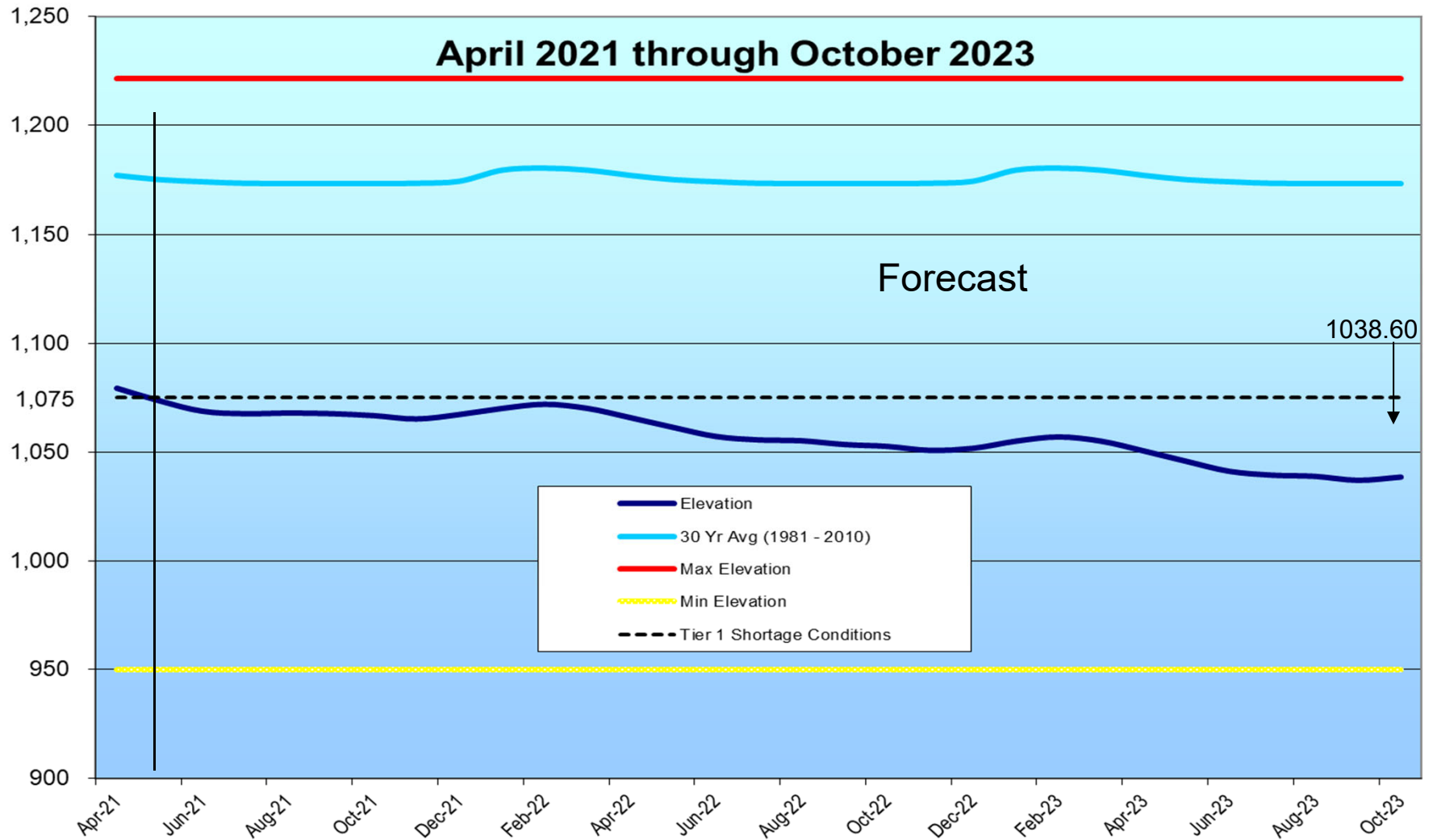


# Reservoir and System Capacity as of 12/09/21



December 13, 2021

# Lake Mead Elevation



December 13, 2021



Questions or Comments?  
Call Sonseeahray Thayer at:  
602-368-4265

For a copy of this report, go to the Power Authority website  
at: <http://www.powerauthority.org/>  
and click on downloads.